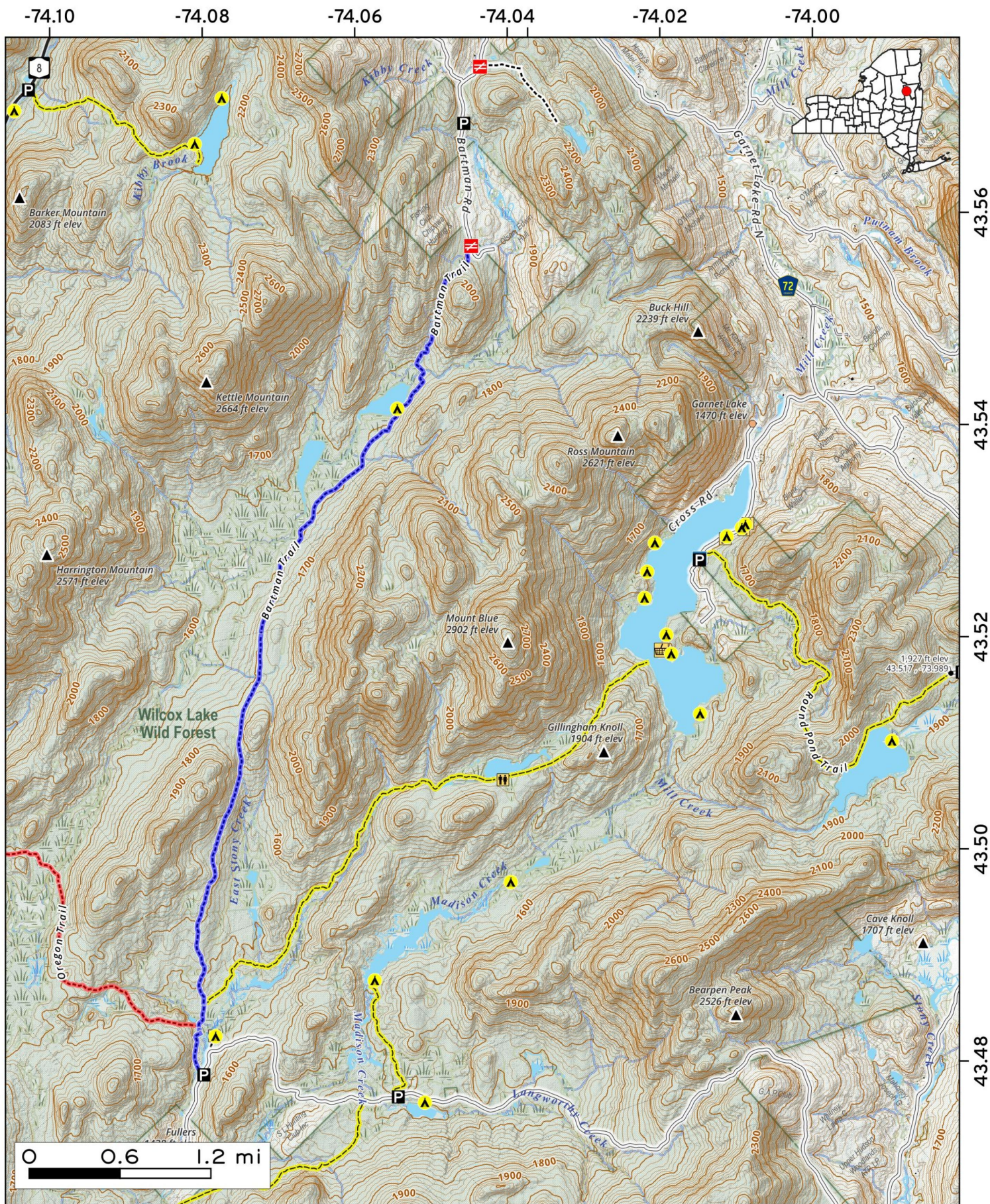


Bartman Trail is a snowmobile trail follows the abandoned routing of Bartman Road through the forest preserve, past Fish Ponds along East Stoney Creek to Baldwin Springs.

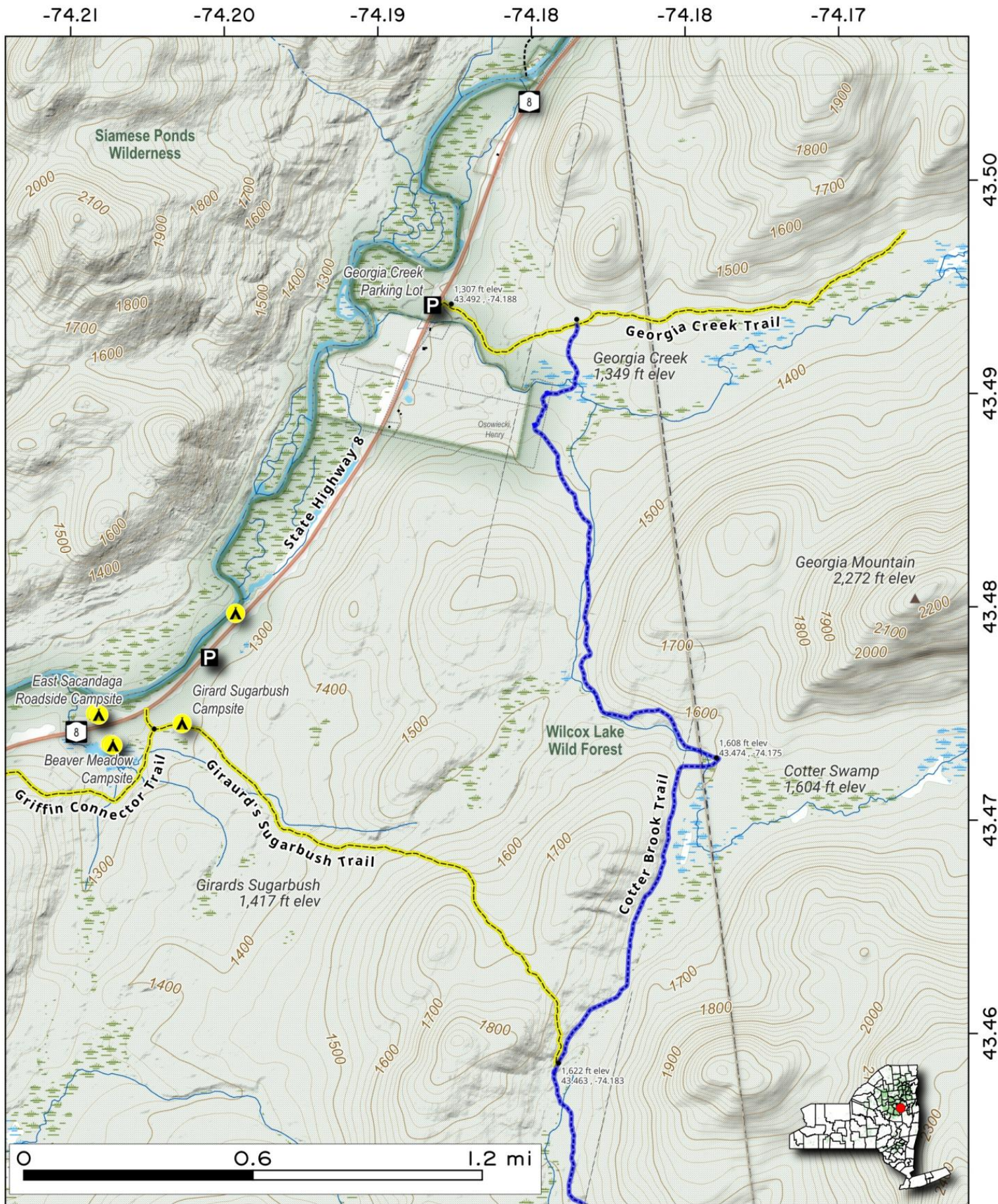


Map created by Andy Arthur on 5/4/2026 in QGIS 3.44.9-Solothurn. Data: NYS GIS and NYS DEC. More at andyarthur.org



Cotterbrook Trail is accessed via the Georgia Brook Trailhead (signed) along NY 8, connects back to the northend of the Girard's Sugarbush Trail.

Map created by Andy Arthur on 9/29/2025 in QGIS 3.44.3-Solothurn. Contains US Forest Service Base Map, NYS DEC data with additional campsites added by Andy. More maps at andyarthur.org.

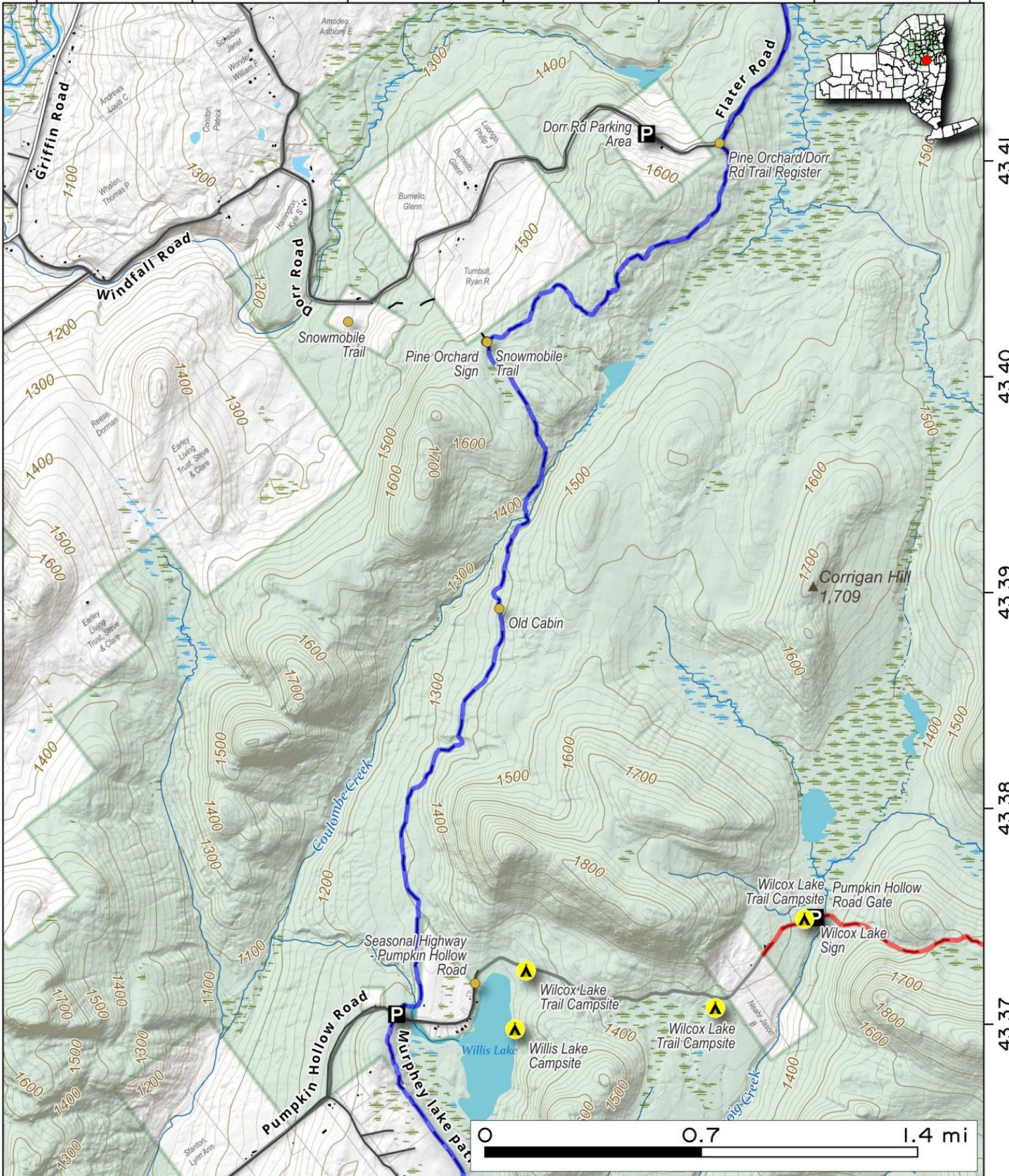


Coulumbe Creek Trail. The Columbe Creek Trail connects the Pine Orchard Trail to Pumpkin Hollow Road.

Map created by Andy Arthur on 4/9/2025 in QGIS 3.34.15-Prizren. Contains US Forest Service Base Map, NYS DEC data with additional campsites added by Andy. More maps at andyarthur.org.



-74.27 -74.26 -74.25 -74.24 -74.23 -74.22 -74.21



43.41

43.40

43.39

43.38

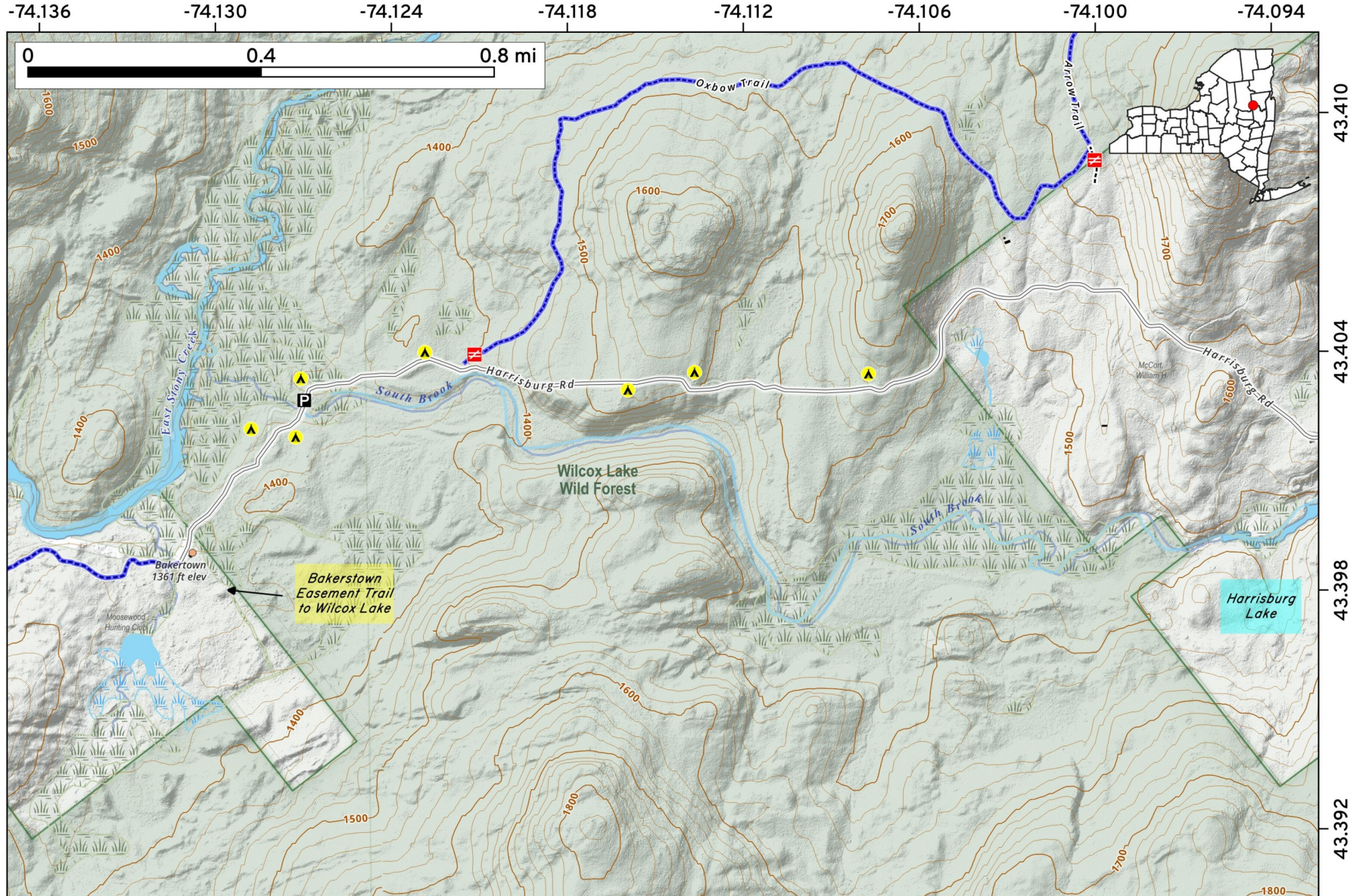
43.37

0 0.7 1.4 mi

Located in the Wilcox Lake Wild Forest near Harrisburg Lake in Adirondacks the **Harrisburg Lake Road** sites offer free, primitive camping on a seasonal use one-lane dirt road. These roadside spots feature informal pull-offs with minimal amenities like stone fire rings. They are near the trailhead to Wilcox Lake in Bakerstown, and Harrisburg Lake for paddling and fishing.



Map created by Andy Arthur on 2/25/2026 in QGIS 3.44.7-Solothurn. Data: NYS GIS and NYS DEC. More at andyarthur.org.

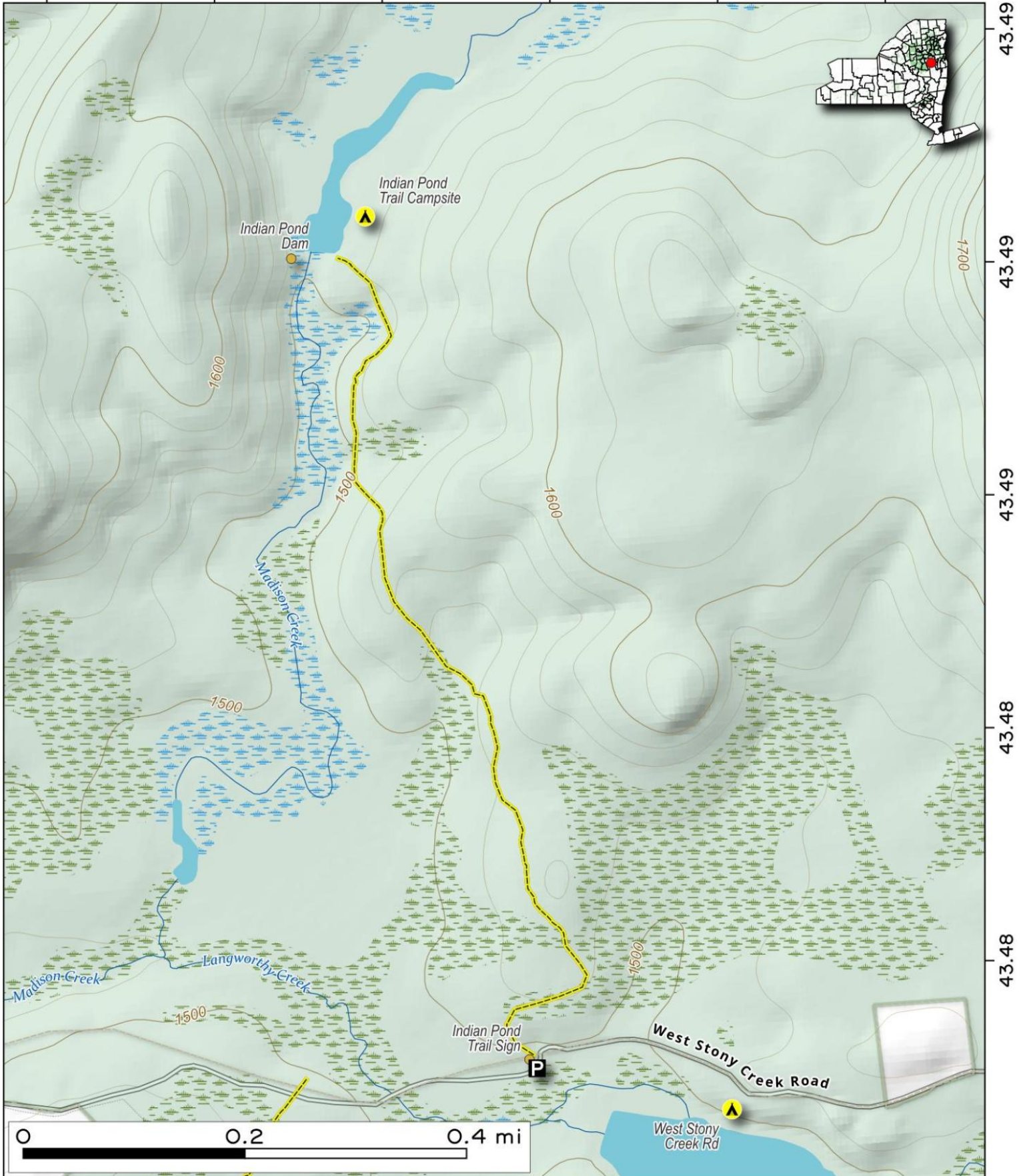


Indian Pond Trail. From the West Stony Creek Road (more of a dirt trail then a road), it's a mile walk back to Indian Pond in Thurman.

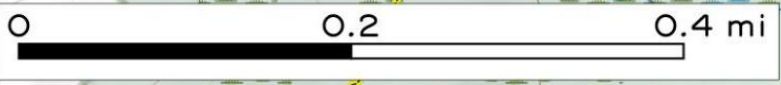
Map created by Andy Arthur on 4/3/2025 in QGIS 3.34.15-Prizren. Contains US Forest Service Base Map, NYS DEC data with additional campsites added by Andy. More maps at andyarthur.org.



-74.07 -74.07 -74.07 -74.06 -74.06 -74.06



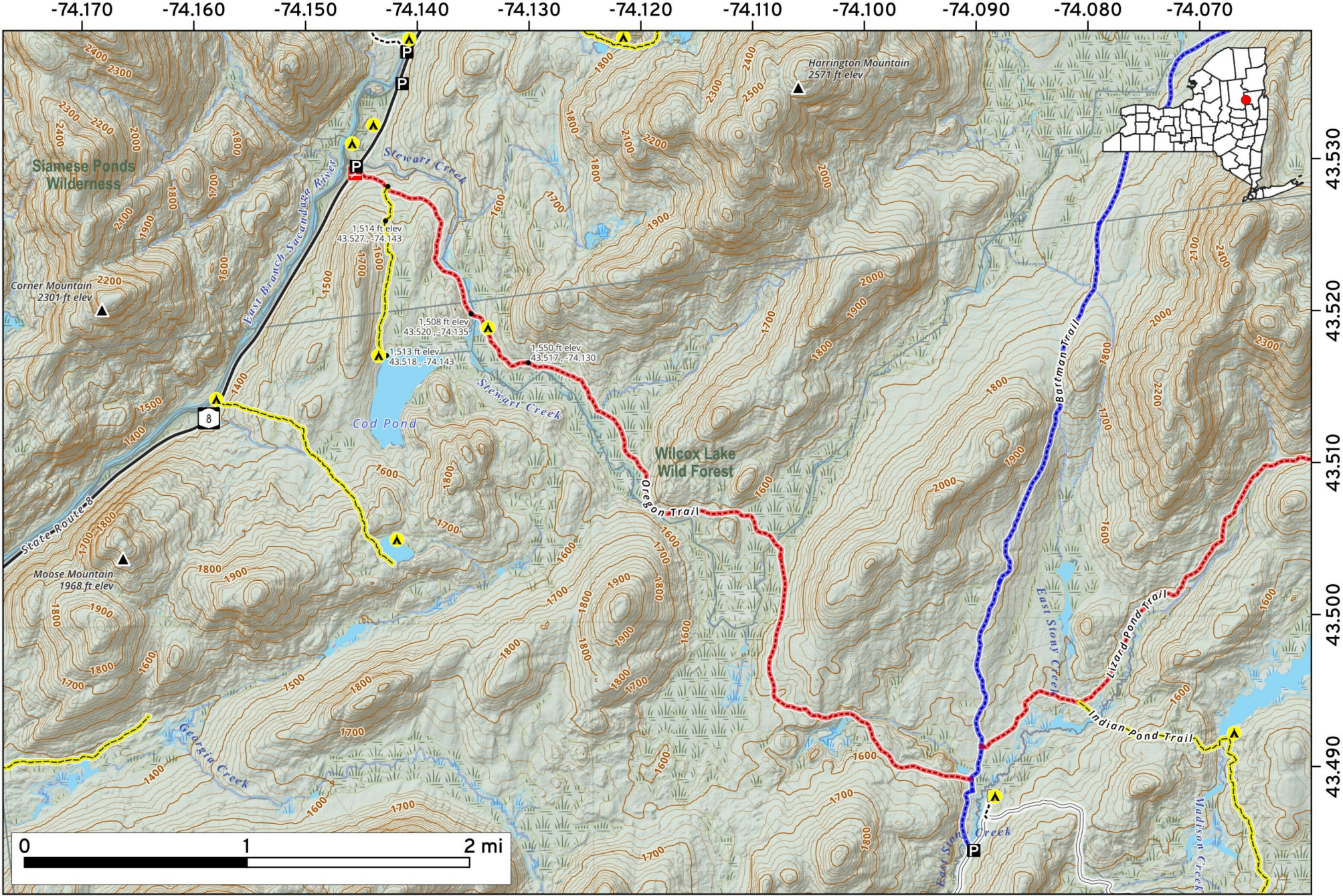
43.49
43.49
43.48
43.48



Oregon Trail. Runs from the Cod Pond Trailhead on NY 8 to West Stoney Creek Road. Primarily a snowmobile trail, this trail follows Stewart Creek and may be impassable during summer months.

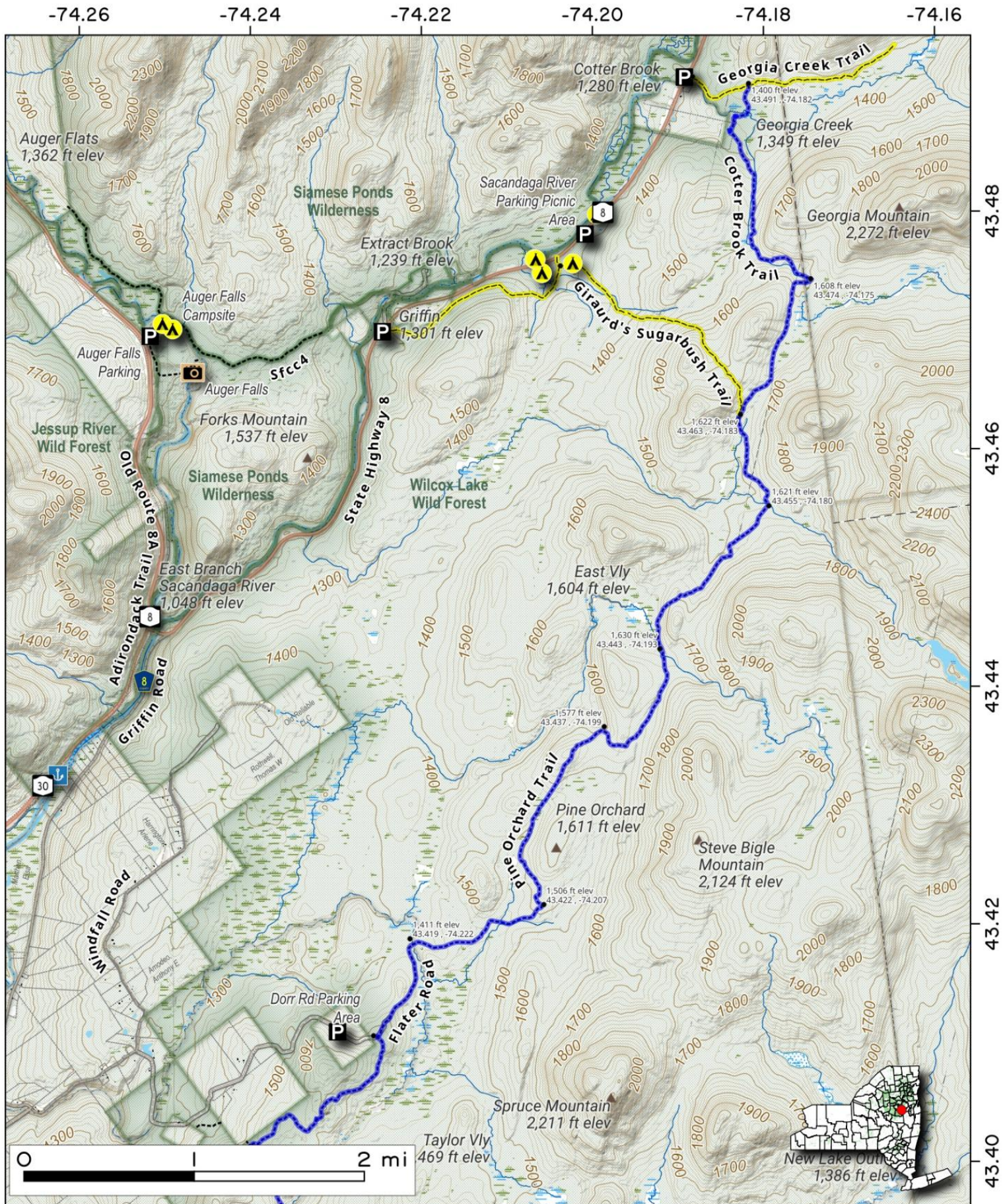


Map created by Andy Arthur on 2/11/2026 in QGIS 3.44.7-Solothurn. Data: NYS GIS and NYS DEC. More at andyarthur.org.



Pine Orchard Trail. Trail that runs from Dorr Road in Wells to Girard's Sugar Bush Trail and NY 8 back to an old growth forest in a remote part of Wilcox Lake Wild Forest.

Map created by Andy Arthur on 9/29/2025 in QGIS 3.44.3-Solothurn. Contains US Forest Service Base Map, NYS DEC data with additional campsites added by Andy. More maps at andyarthur.org.

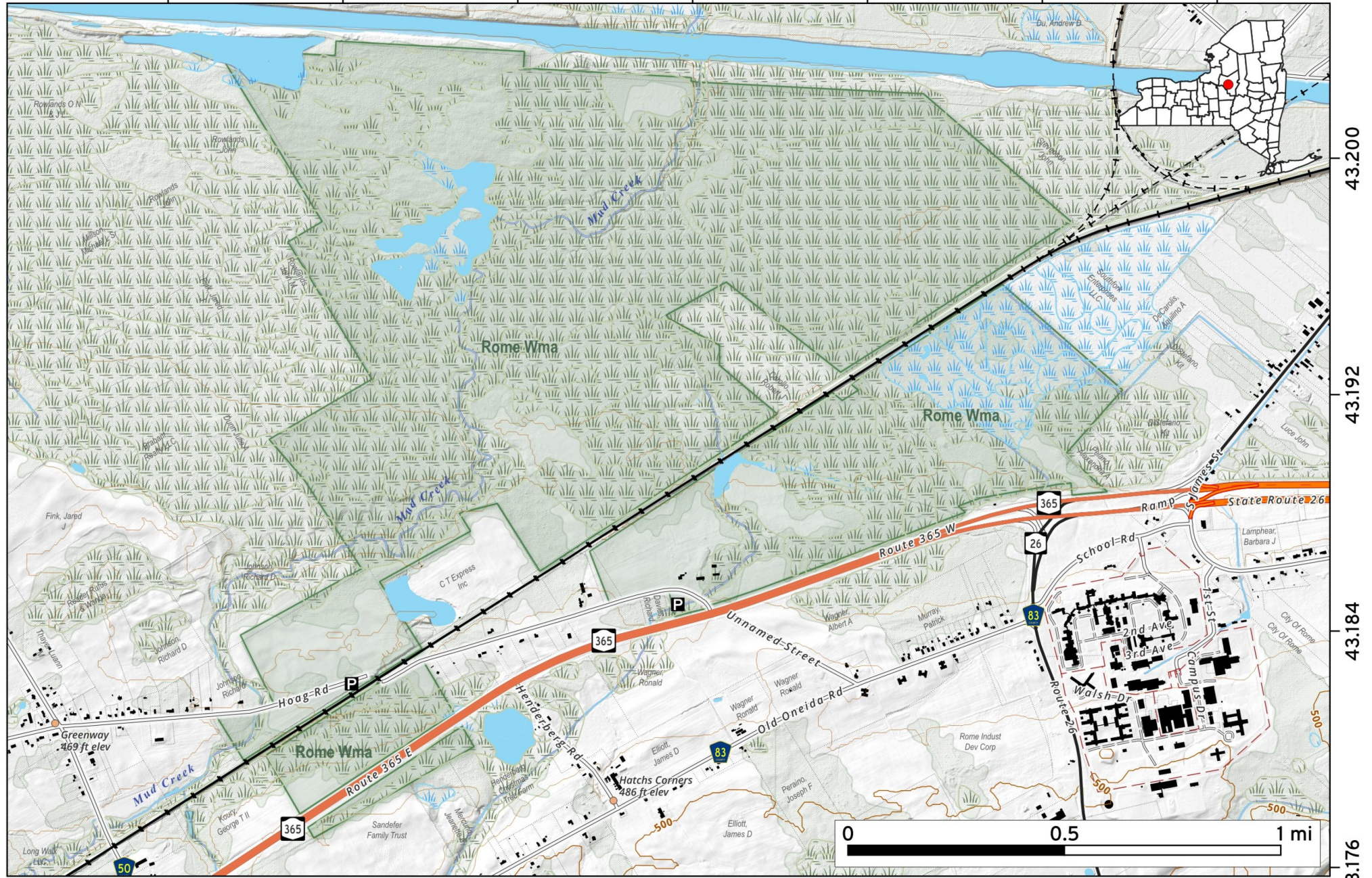


Located in Oneida County, New York, the **Rome Wildlife Management Area (WMA)** spans approximately 440 acres of diverse habitat. Managed by the NYSDEC, it features forested wetlands, shrublands, and grasslands. This protected area supports wildlife conservation and offers public recreation, including hunting, trapping, birdwatching, and nature photography.



Map created by Andy Arthur on 2/23/2026 in QGIS 3.44.7-Solothurn. Data: NYS GIS and NYS DEC. More at andyarthur.org.

-75.528 -75.520 -75.512 -75.504 -75.496 -75.488 -75.480

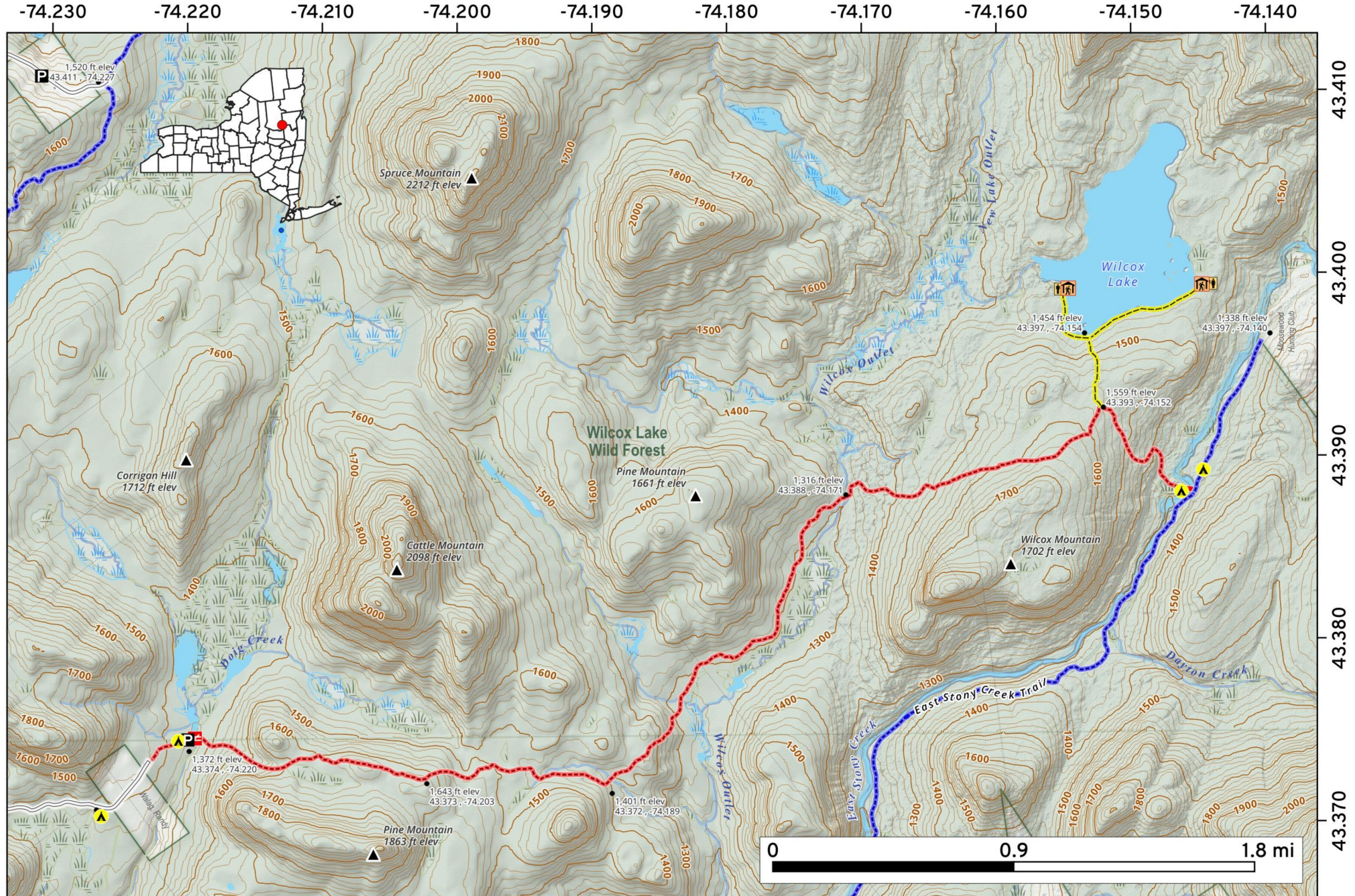


43.200
43.192
43.184
43.176

The **Willis-Wilcox Trail** is a 5.2 mile trail from the end of Pumpkin Hollow Road, past Willis Lake and the camp in holding, that takes you across several minor stream and hills before intersecting with the Wilcox Lake Trail and taking you back to Wilcox Lake where there is two lean-tos and designated campsites.



Map created by Andy Arthur on 6/5/2026 in QGIS 3.44.10-Solothurn. Data: NYS GIS and NYS DEC. More at andyarthur.org



The Willis-Wilcox Trail, spanning 5.2 miles, can be accessed from two points: the western terminus located at the end of Pumpkin Hollow Road and the eastern terminus located on Harrisburg Road.



Map created by Andy Arthur on 10/2/2025 in QGIS 3.44.3-Solothurn. Contains NYS GIS and DEC data with additional campsites added by Andy. More maps at andyarthur.org.

