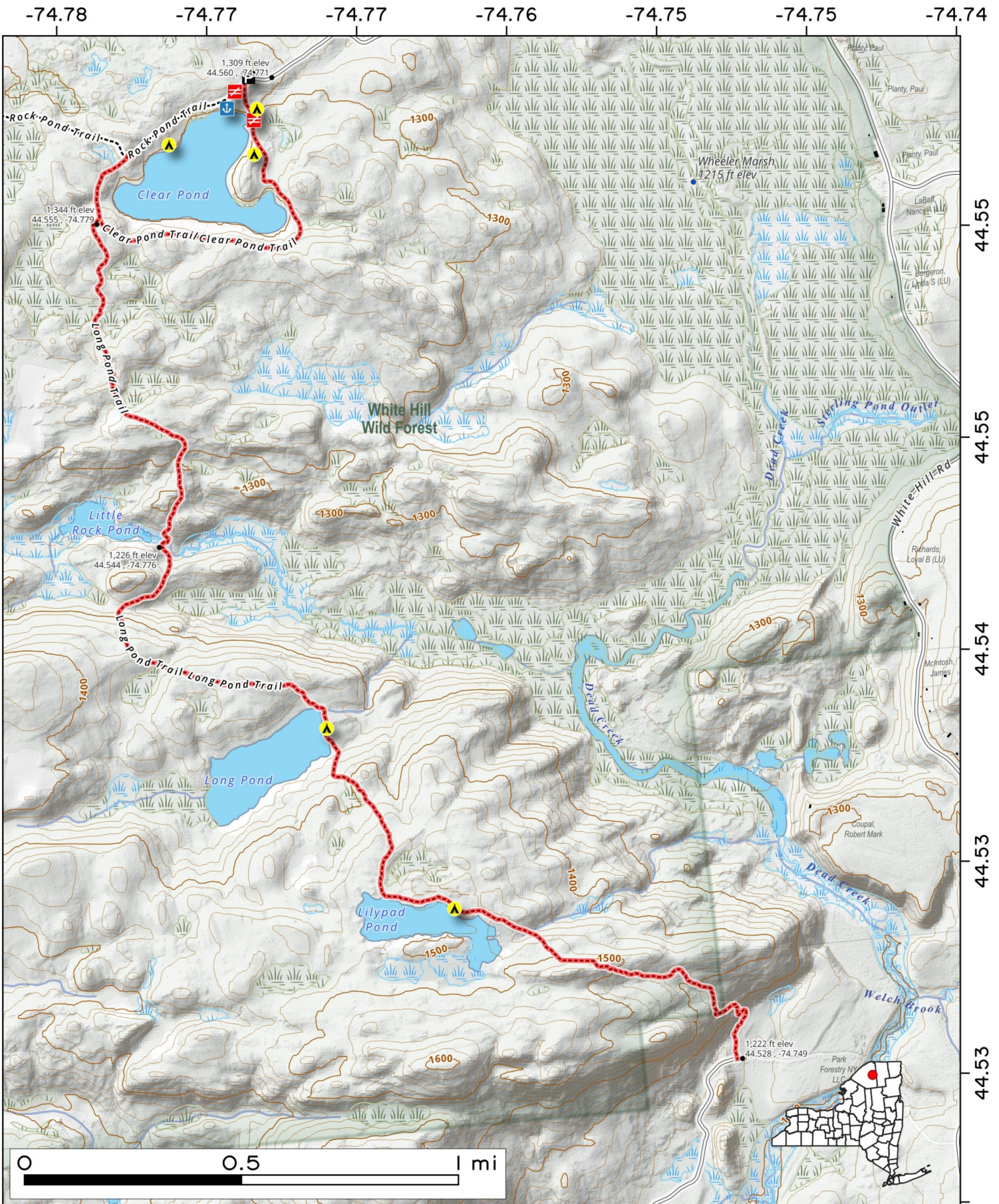


Long Pond Trail at White Hill Wild Forest. 43 1/2 mile one-way hike from Joe Indian Road to Clear Pond through the White Hill Wild Forest is relatively flat and passes by several smaller ponds including Lilypad Pond, Little Rock Pond, and Long Pond.

Map created by Andy Arthur on 12/16/2025 in QGIS 3.44.5-Solothurn. Contains NYS GIS and DEC data with additional campsites added by Andy. More maps at andyarthur.org.

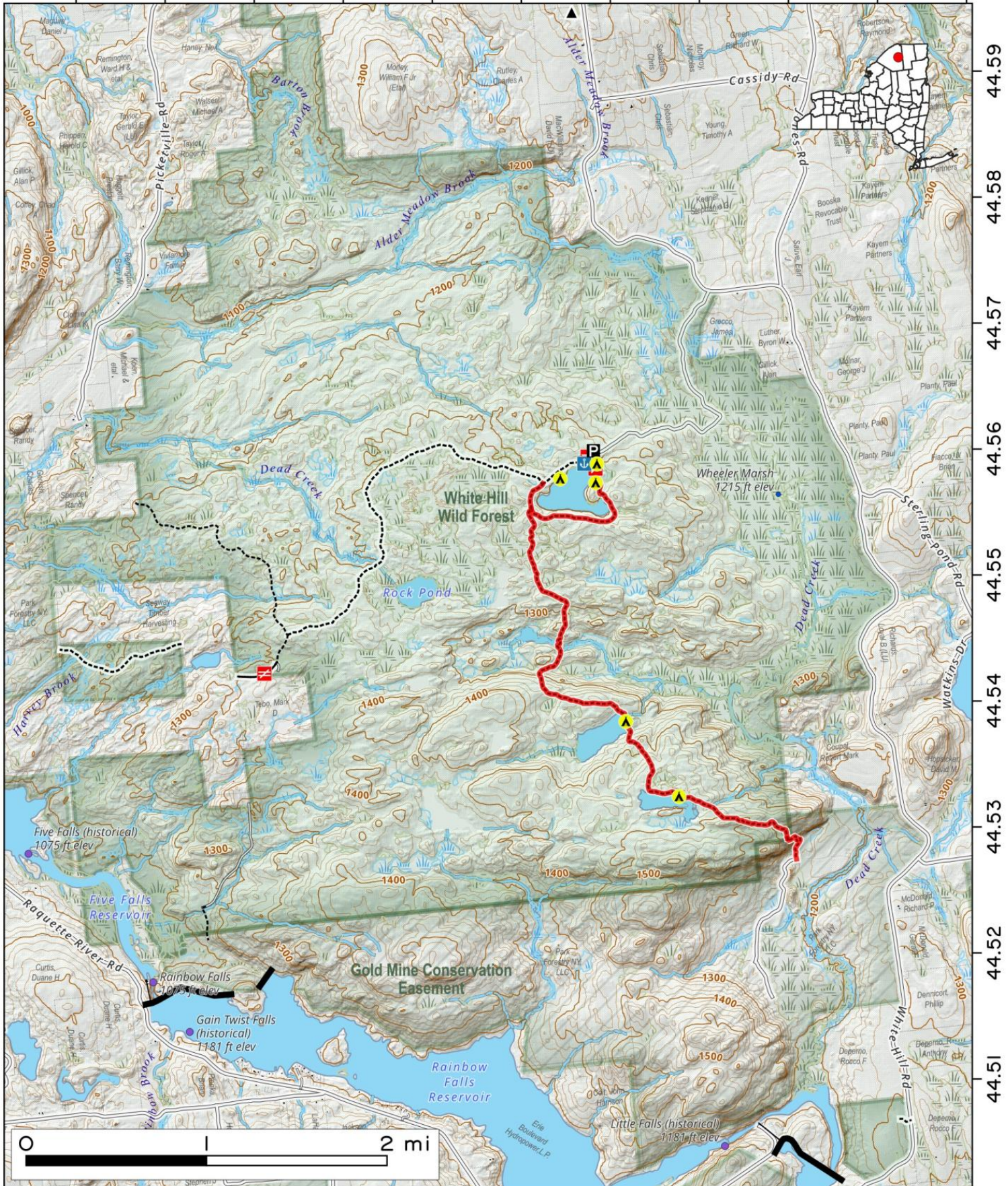


The **White Hill Wild Forest** is a remote northern section of the Adirondacks north of Rainbow Falls Reservoir known for Clear, Long, Lilypad, and Little Rock Ponds, offering opportunities for hiking, fishing, and camping. Snowmobile trails also connect through the area in winter.

Map created by Andy Arthur on 10/30/2025 in QGIS 3.44.3-Solothurn. Contains NYS GIS and DEC data with additional campsites added by Andy. More maps at andyarthur.org.



-74.83 -74.82 -74.81 -74.80 -74.79 -74.78 -74.77 -74.76 -74.75 -74.74 -74.73



44.59
44.58
44.57
44.56
44.55
44.54
44.53
44.52
44.51

