

The Brooktrout, Deep, Wolf, Falls Ponds in the West Canada Lake Wilderness south of Indian Lakes Road at Moose River Plains.

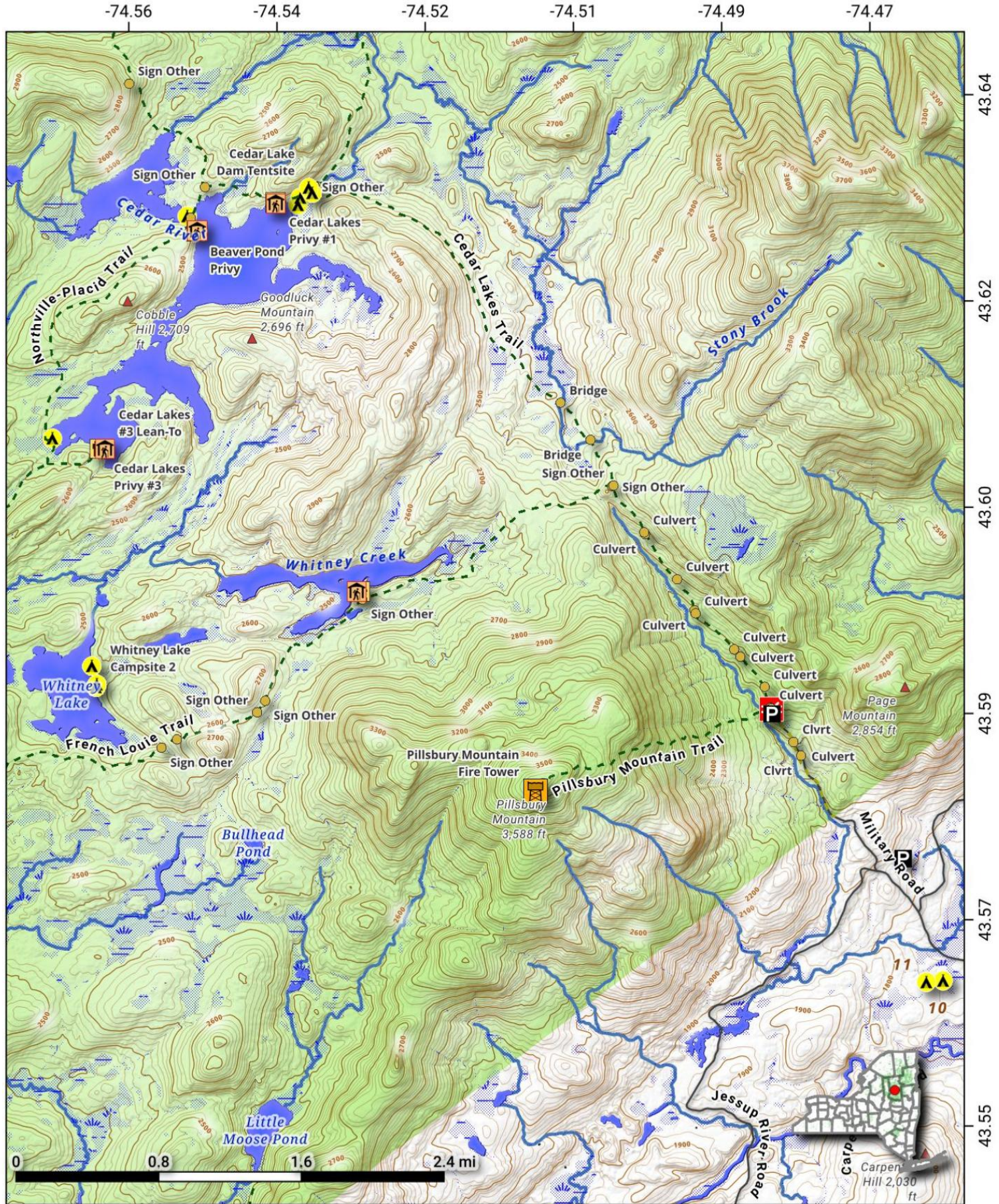
Map created by Andy Arthur on 10/24/2025 in QGIS 3.44.3-Solothurn. Contains NYS GIS and DEC data with additional campsites added by Andy. More maps at andyarthur.org.



Cedar Lakes. The largest and most remote lakes in West Canada Lakes Wilderness. At 8.4 miles each way and a 900 foot elevation change, it's somewhat popular hike back from Pillsbury Parking Area on Old Military Turnpike. This road as of 2024 has been re-built and opened to the Pillsbury Trailhead, otherwise you have to add another 2 miles to the hike from Sled Harbor.

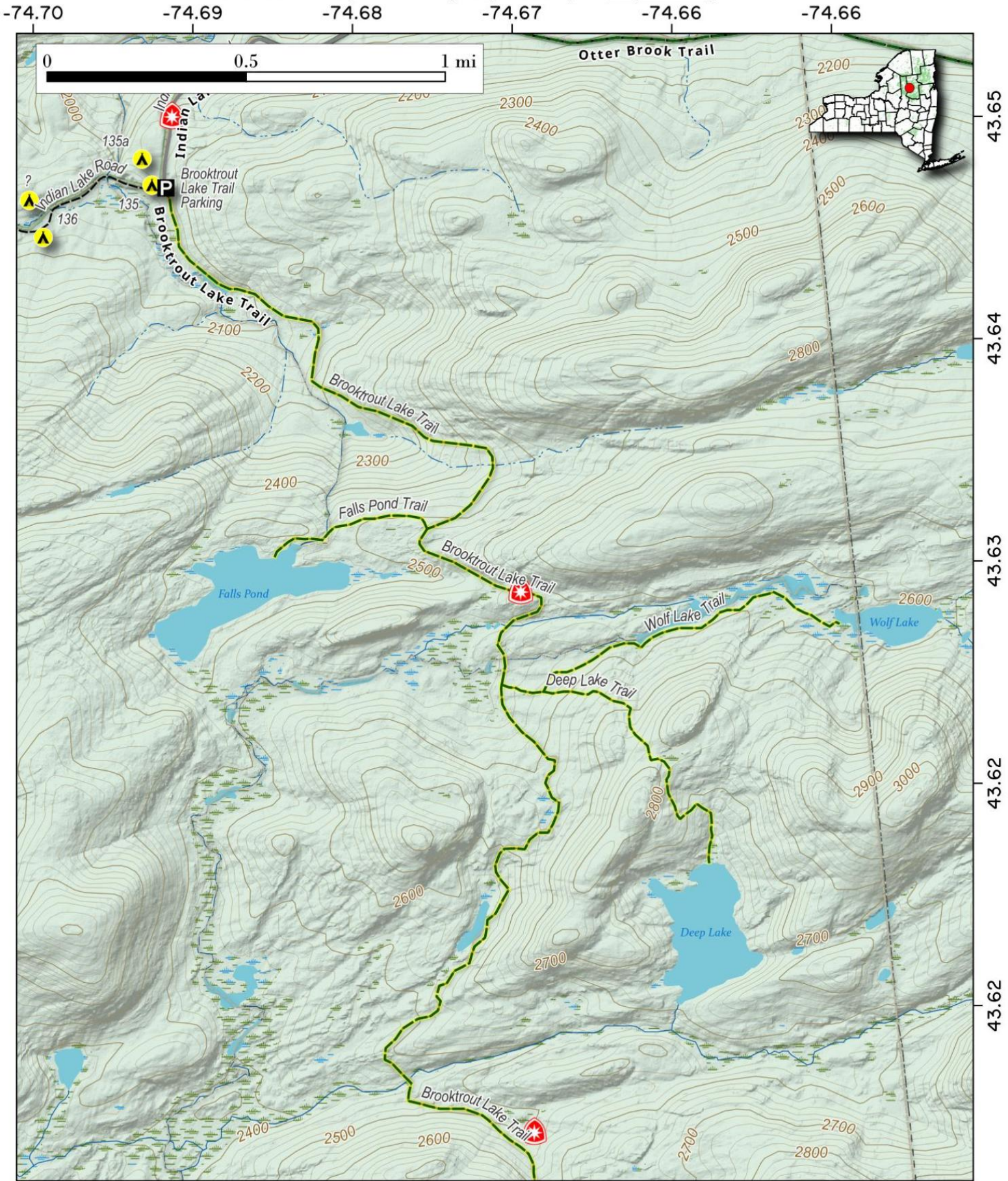


Map created by Andy Arthur on 6/12/2024 in QGIS 3.34.7-Prizren. Contains DEC Trails/Assets, Additional Campsites/Trails by Andy other data ©OpenStreetMap Data, OSM Maintainers. More maps at andyarthur.org.



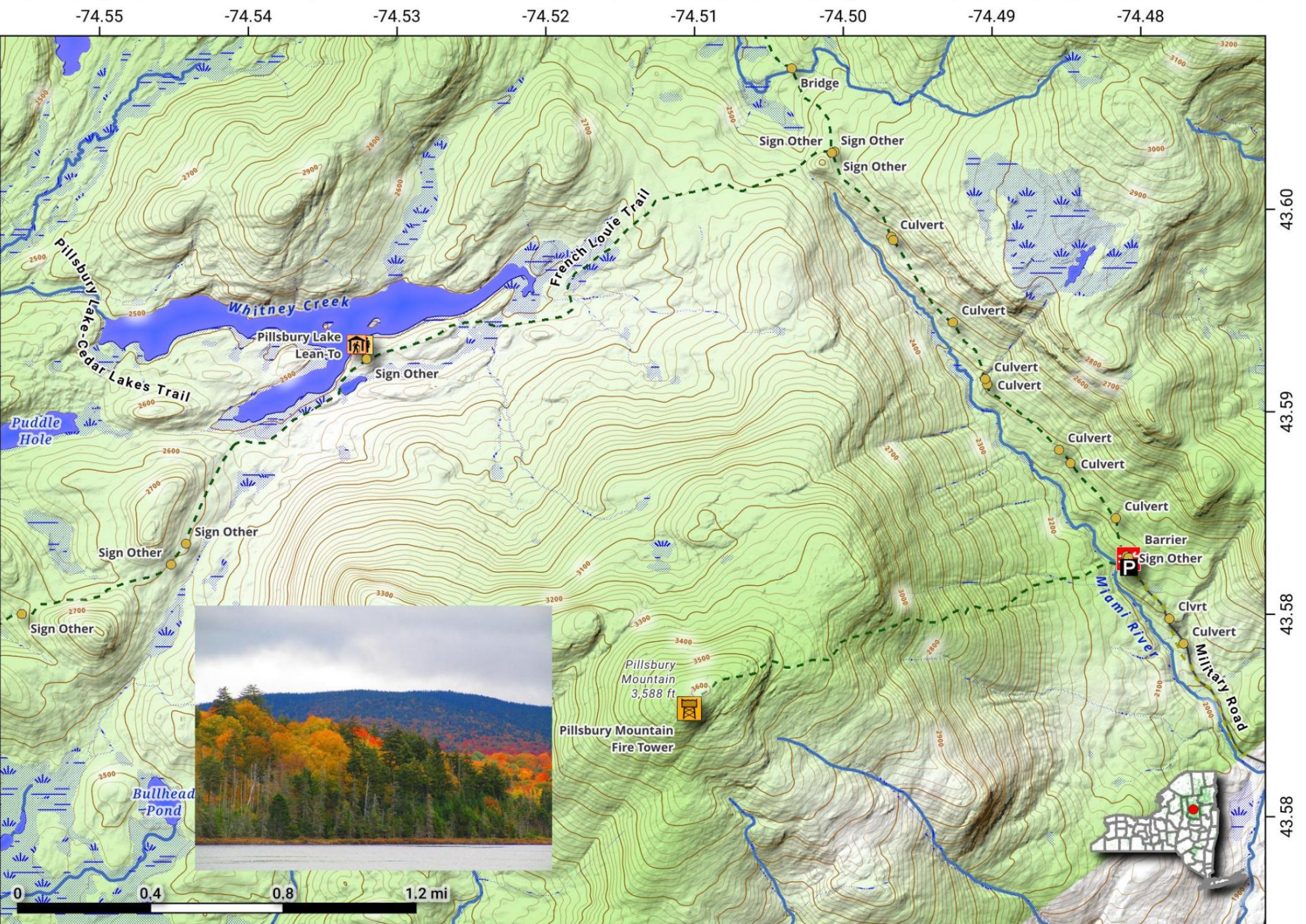
Deep Lake Trail. 3 miles south of Brook Trout Lake Trailhead in Moose River Plains (seasonal access) is Deep Lake in West Canada Lake Wilderness. Follow the Falls Pond Trail 2 miles then continue beyond the ridge down another mile to Deep Lake.

Map created by Andy Arthur on 2/27/2025 in QGIS 3.34.14-Prizren. Contains US Forest Service Base Map, NYS DEC data with additional campsites added by Andy. More maps at andyarthur.org.



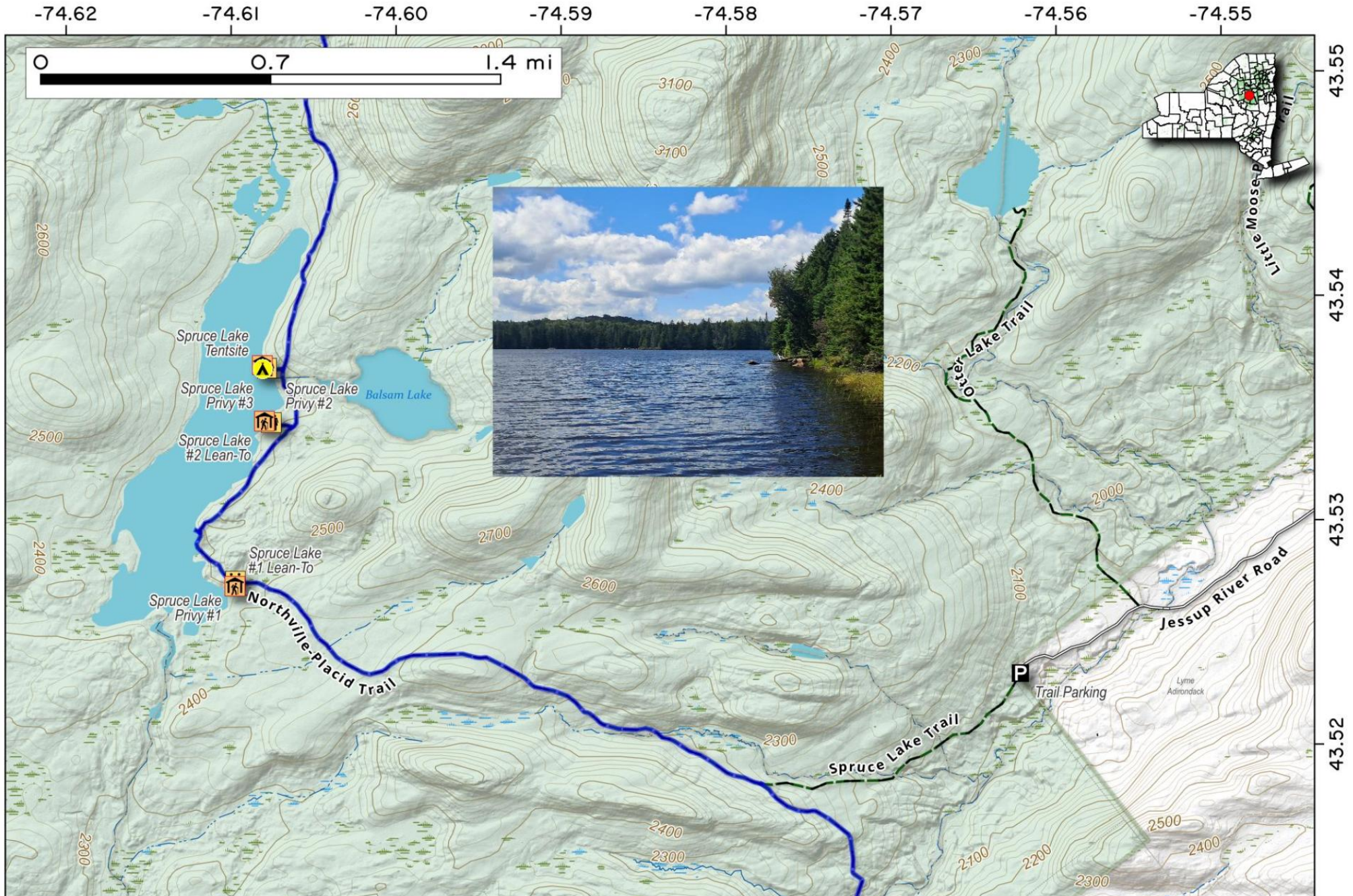
Pillsbury Lake. Hike 1 1/2 miles along the red blazed trail from Pillsbury Mountain Trail Head. Elevation increase is roughly 800 feet. Turn left at trail intersection, continue to follow red-blazed trail another 1 1/2 miles to a side trail to Pillsbury Lake (look for the Lean-To sign). 6.6 miles in and out.

Map created by Andy Arthur on 6/13/2024 in QGIS 3.34.7-Prizren. Contains DEC Trails/Assets, Additional Campsites/Trails by Andy other data ©OpenStreetMap Data, OSM Maintainers.



Spruce Lake Trail. Seven miles of bumpy dirt truck trail on Jessup River Road you reach wilderness boundary, where it's one mile up a modest hill to Northville-Placid Trail and then 2 1/2 miles back to Spruce Lake.

Map created by Andy Arthur on 3/18/2025 in QGIS 3.34.14-Prizren. Contains US Forest Service Base Map, NYS DEC data with additional campsites added by Andy. More maps at andyarthur.org.

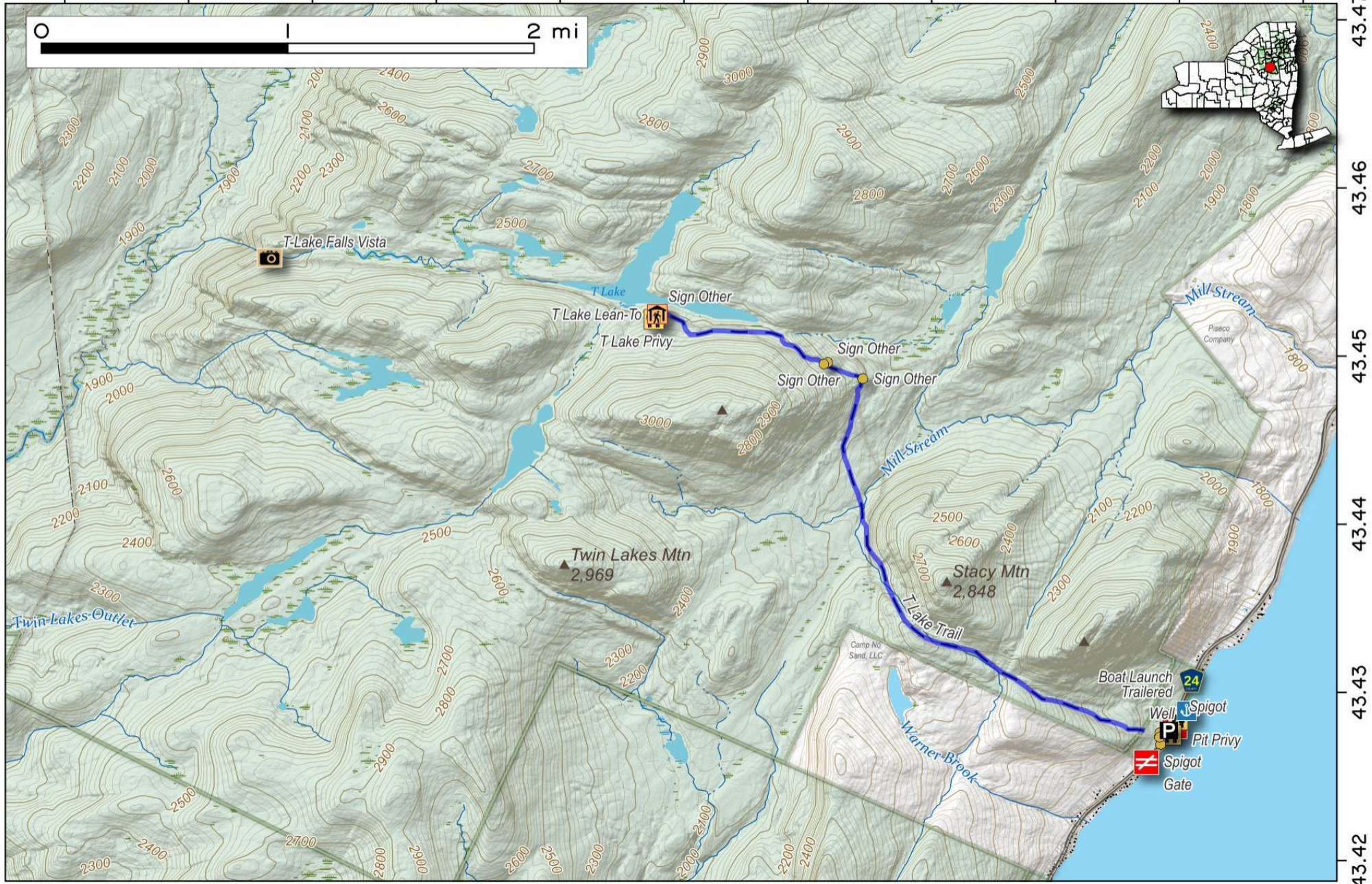


T Lake Trail. From a pull-off by the Poppler Pond Campground on Piseco Pond Lake, it's 3 1/2 miles back to T Lake where there is a lean-to and outhouse. From there it is another 2 mile herd path to T-Lake Falls Overlook.

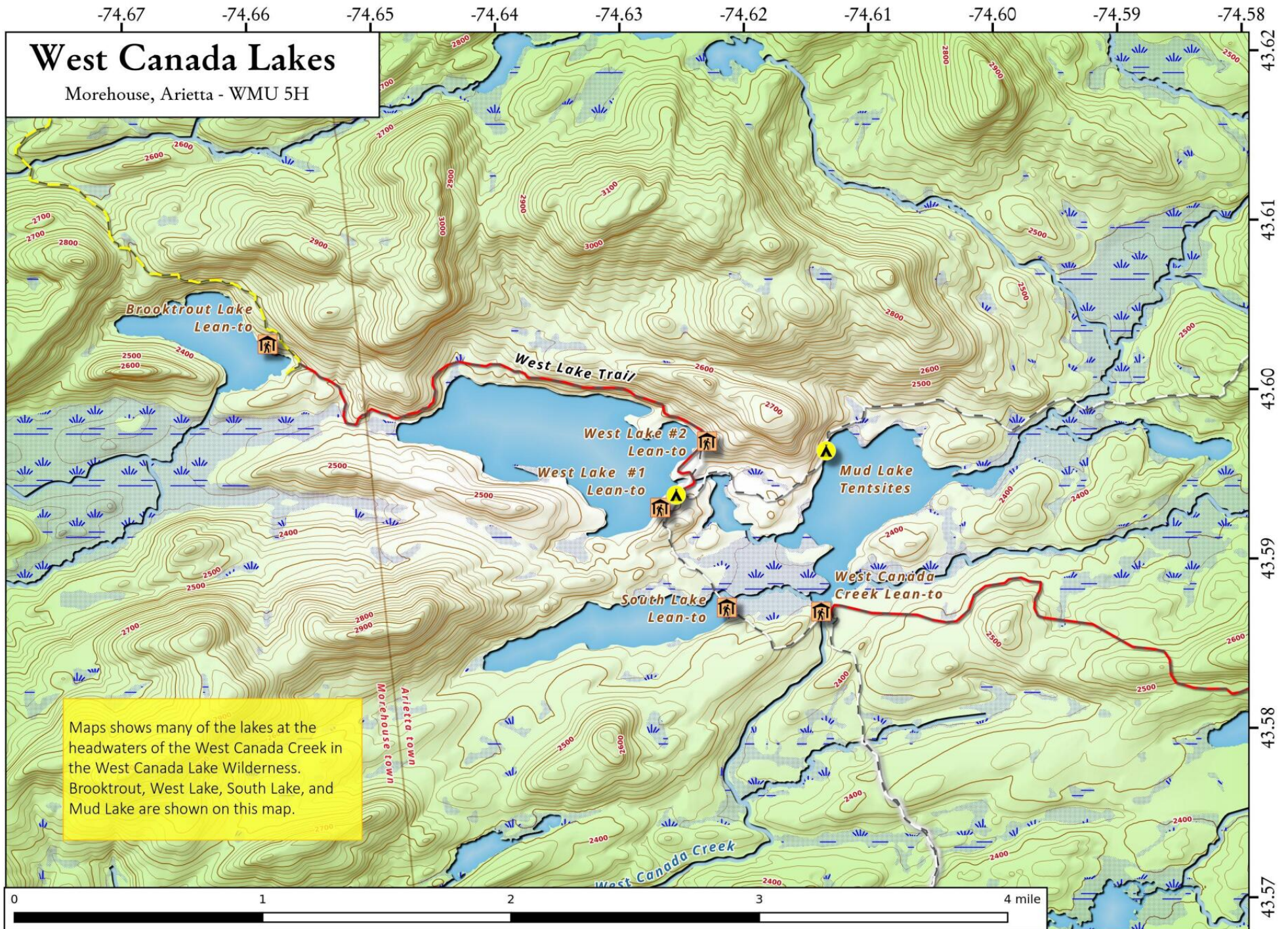
Map created by Andy Arthur on 3/18/2025 in QGIS 3.34.14-Prizren. Contains US Forest Service Base Map, NYS DEC data with additional campsites added by Andy. More maps at andyarthur.org.



-74.63 -74.62 -74.61 -74.60 -74.59 -74.58 -74.57 -74.56 -74.55 -74.54 -74.53



43.47
43.46
43.45
43.44
43.43
43.42



Maps shows many of the lakes at the headwaters of the West Canada Creek in the West Canada Lake Wilderness. Brooktrout, West Lake, South Lake, and Mud Lake are shown on this map.

West Canada Lakes Map, September 27, 2017 by AndyArthur.org in QGIS 2.18.11 and Python. Street Map is Copyright © OpenStreetMap contributors, CC BY-SA. NYSDEC Data: DEM, Borders, ADK Wetlands, Trails, Assets. True North. 1 inch = 0.5 miles. Projection: NAD83 / UTM zone 18N. Coordinates: 0.01° latitude-longitude (WGS84). Contours are 20 feet.