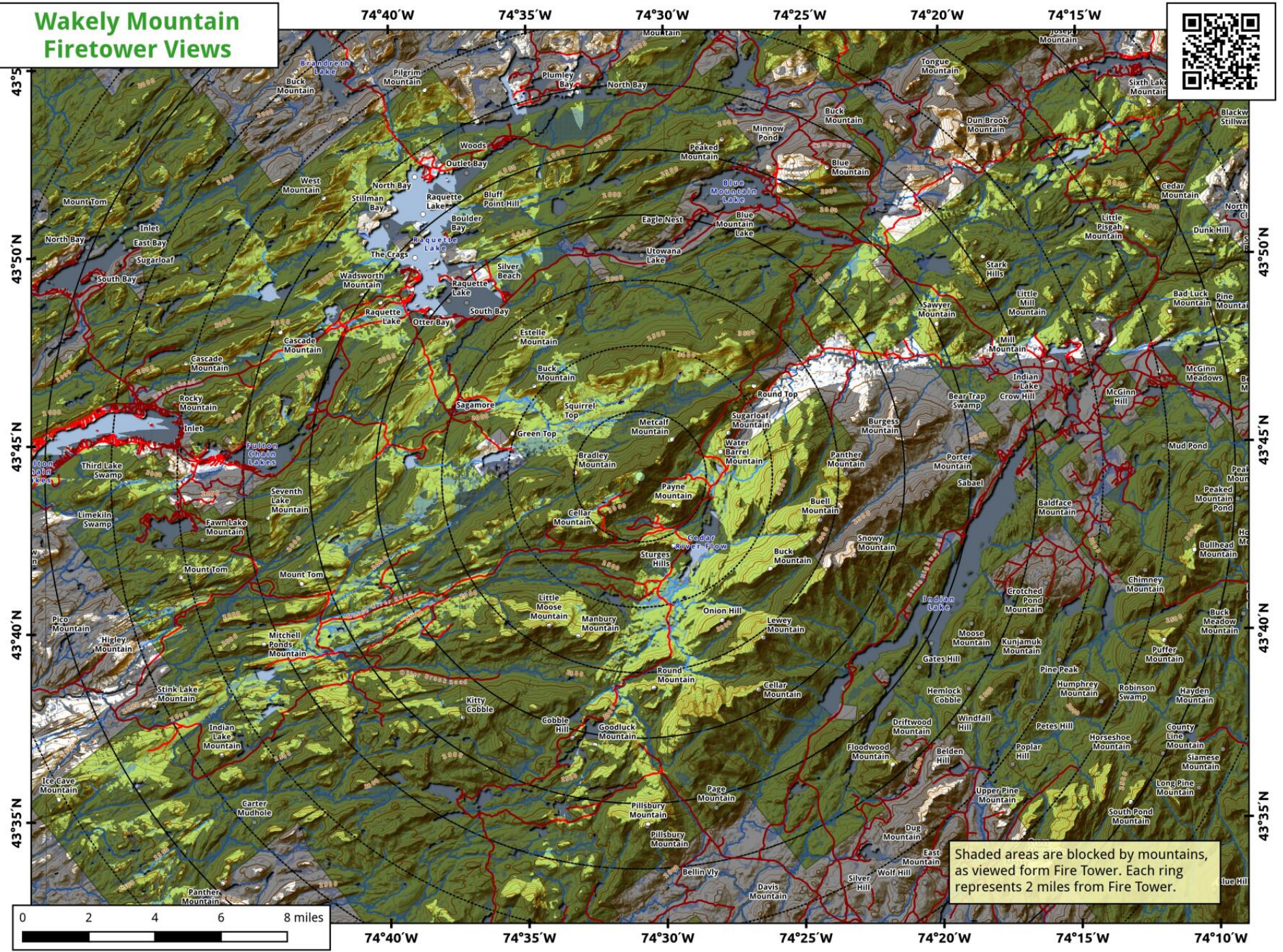


The **Wakely Mountain Trail** in the Adirondack Park is a roughly 6-mile round-trip trek. The first two miles follow a flat, often muddy old road. The final mile turns strenuous, gaining over 1,100 feet. At the summit stands New York's tallest fire tower, offering spectacular 360-degree views.

Map created by Andy Arthur on 3/9/2026 in QGIS 3.44.7-Solothurn. Data: NYS GIS and NYS DEC. More at andyarthur.org.

Wakely Mountain Firetower Views



Shaded areas are blocked by mountains, as viewed from Fire Tower. Each ring represents 2 miles from Fire Tower.

Wakely Mountain Trail.

3 mile trail up Wakely Mountain, a fire tower on western end of Moose River Plains that provides views of Cedar River Flow, Blue Ridge Wilderness and Moose River Recreation Area.

Map created by Andy Arthur on 10/17/2024 in QGIS 3.34.11-Prizren. Contains US Forest Service Base Map. NYS DEC Data. More maps at andyarthur.org.



-74.51

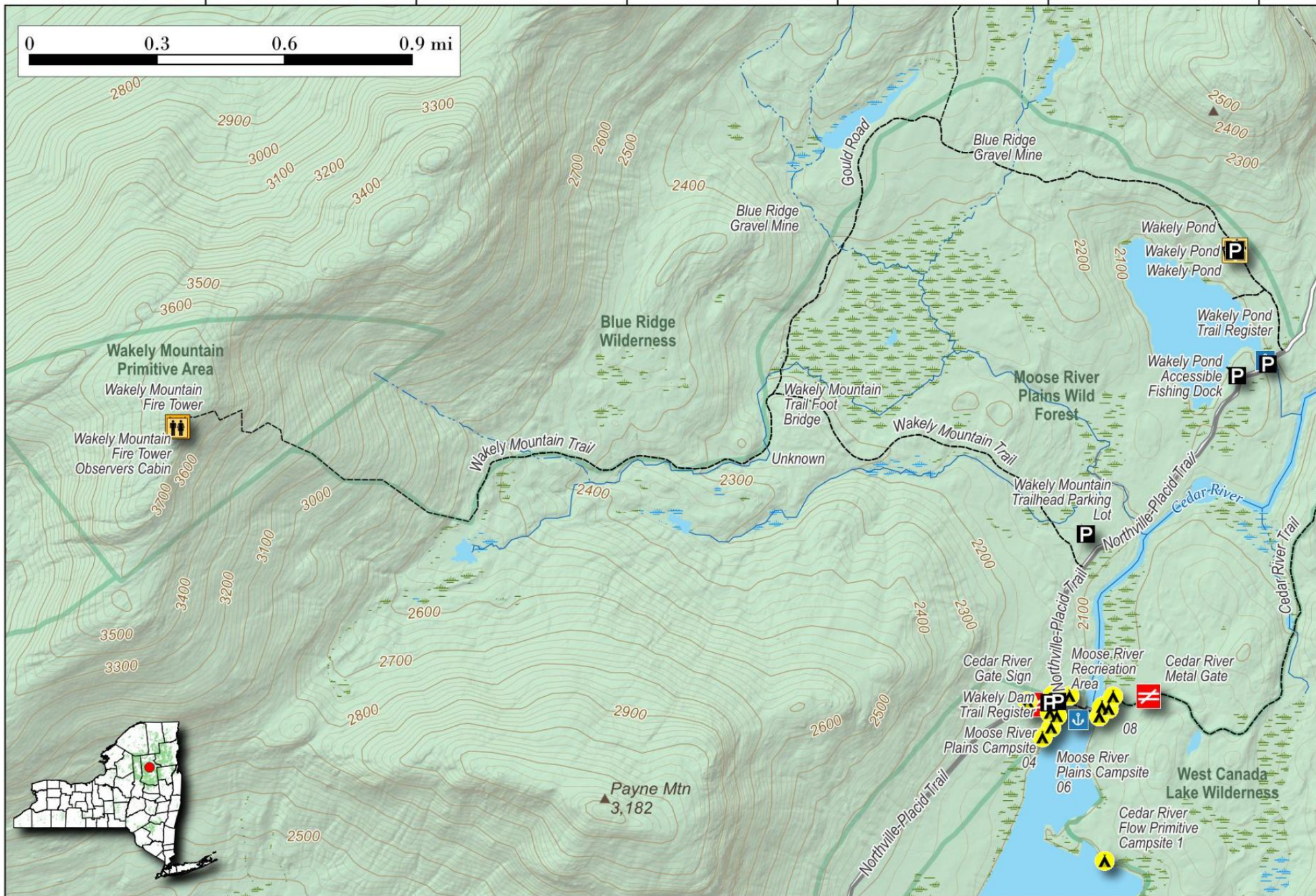
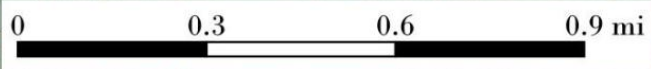
-74.50

-74.49

-74.48

-74.47

-74.46



43.74

43.73

43.72