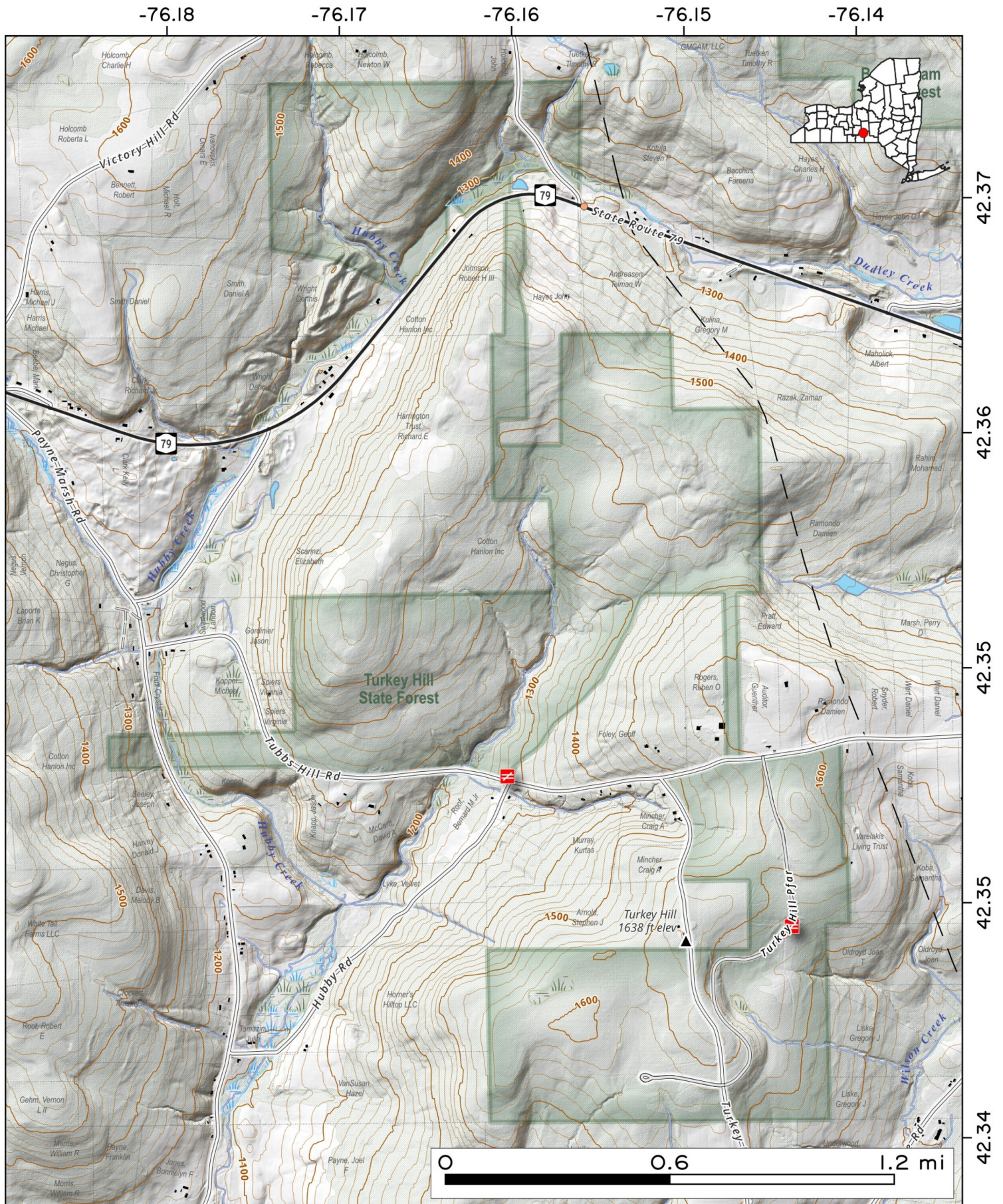


Turkey Hill State Forest. sprawling 1,118 acre state forest that winds nearly 3 miles north to south before Richford heading west from Lisle on NY 79.

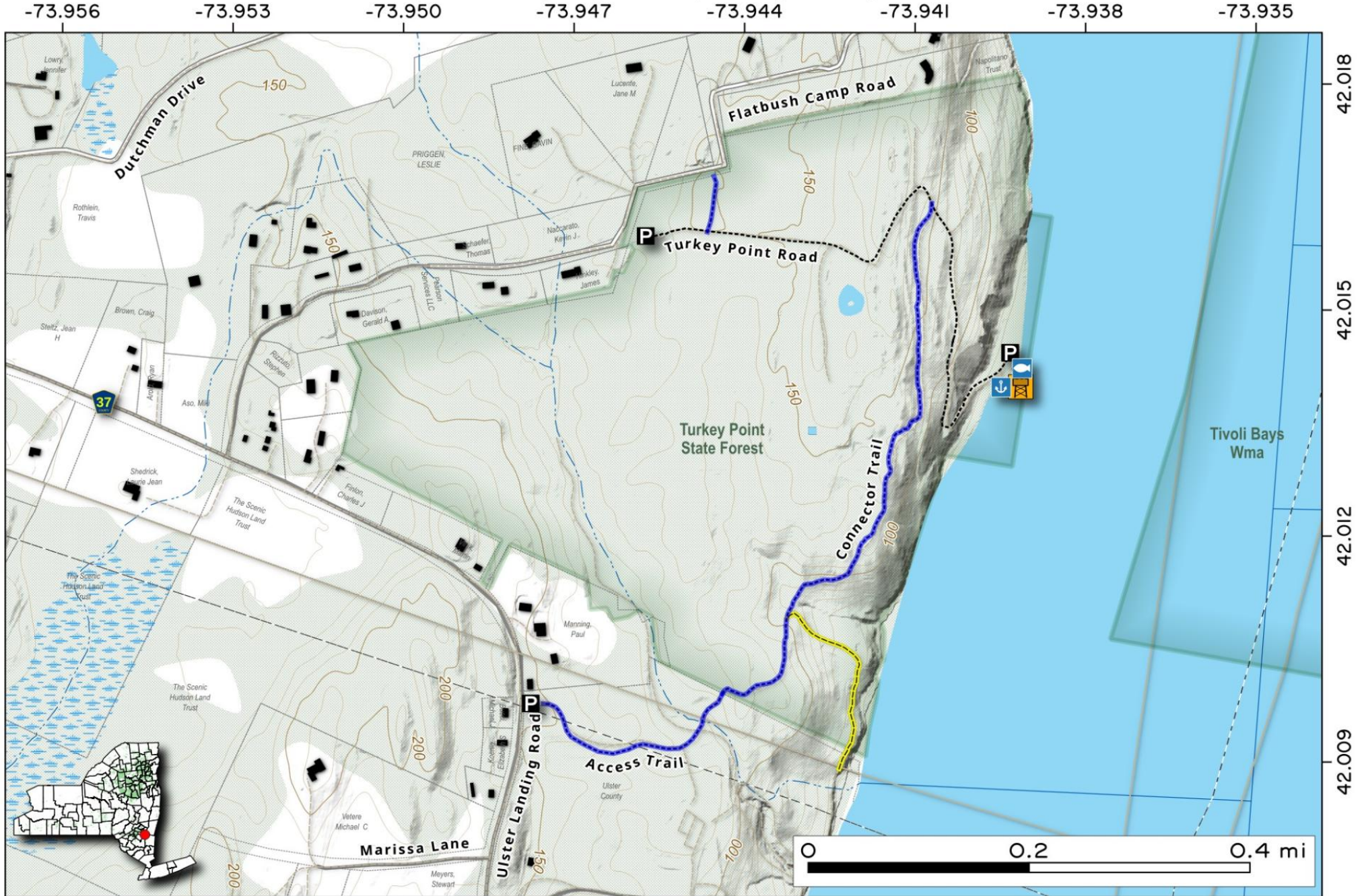
Map created by Andy Arthur on 1/7/2026 in QGIS 3.44.6-Solothurn. Contains NYS GIS and DEC data with additional campsites added by Andy. More maps at andyarthur.org.



Turkey Point State Forest is 139-acre along the banks of the Hudson River. . Located in Saugerties, Ulster County, this state forest offers stunning river views and diverse landscapes. Visitors can enjoy fishing, hiking, birding and kayaking. Nearby towns include Kingston and Saugerties, with attractions like the Forsyth Nature Center and Hudson River waterfront parks. Accessible facilities include a fishing pier and hand launch.



Map created by Andy Arthur on 8/12/2025 in QGIS 3.44.1-Solothurn. Contains US Forest Service Base Map, NYS DEC data with additional campsites added by Andy. More maps at andyarthur.org.



Turkey Ridge State Forest. 676 acre state forest outside of Jasper, Stueben County. There is a campsite and parking area near the center of forest where a gas well was located.

Map created by Andy Arthur on 3/31/2025 in QGIS 3.34.15-Prizren. Contains US Forest Service Base Map, NYS DEC data with additional campsites added by Andy. More maps at andyarthur.org.

