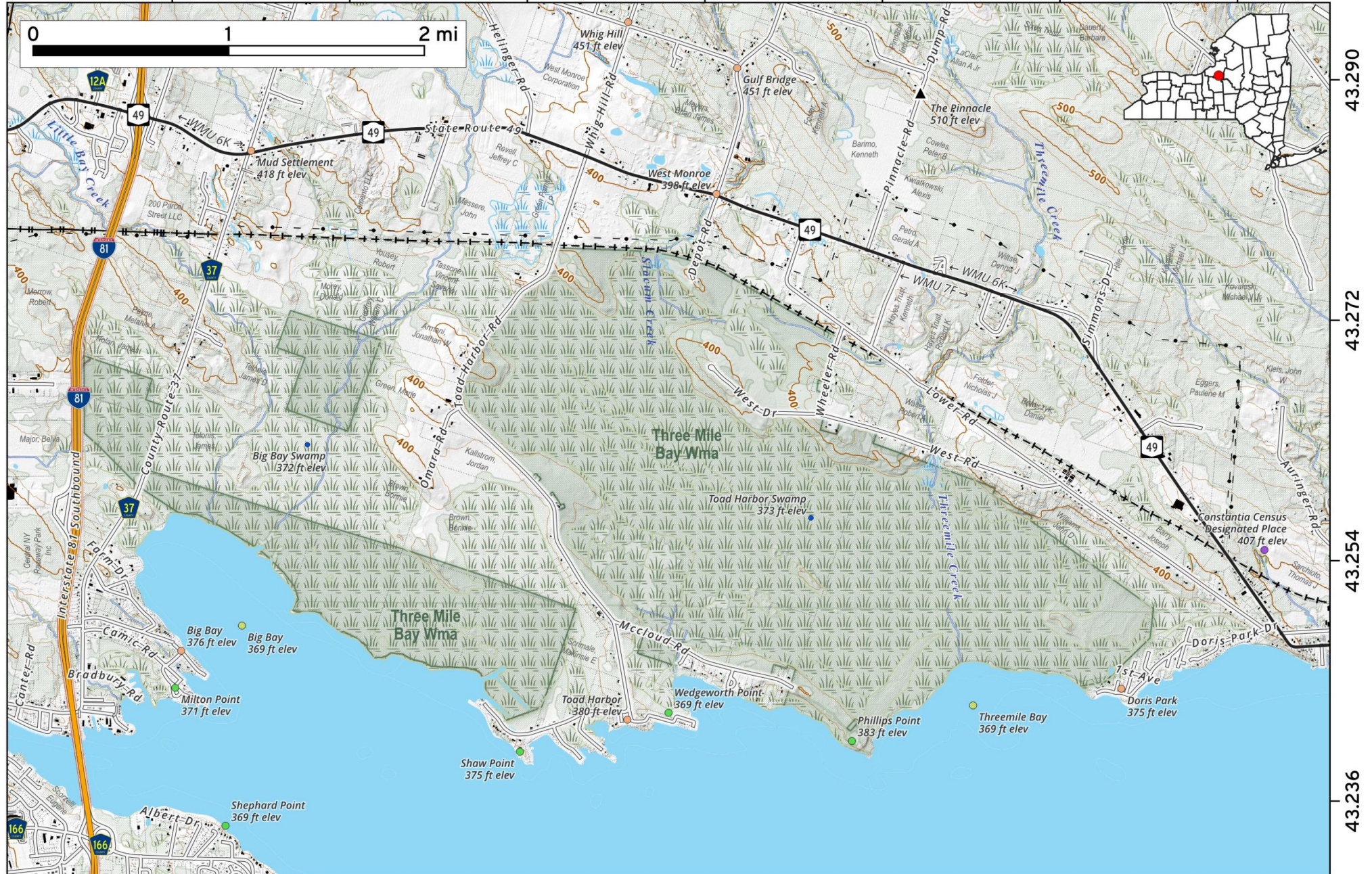


The **Three Mile Bay Wildlife Management Area (WMA)** covers nearly 4,000 acres along Oneida Lake's north shore. This low-lying landscape consists primarily of swamp hardwood forests, marshes, and grasslands. As a designated Bird Conservation Area, it is a premier destination for watching migrating waterfowl and nesting herons. Key access points like the Phillips Point fishing site offer beautiful lake views and year-round outdoor exploration.



Map created by Andy Arthur on 4/30/2026 in QGIS 3.44.9-Solothurn. Data: NYS GIS and NYS DEC. More at andyarthur.org

-76.122 -76.104 -76.086 -76.068 -76.050 -76.032 -76.014

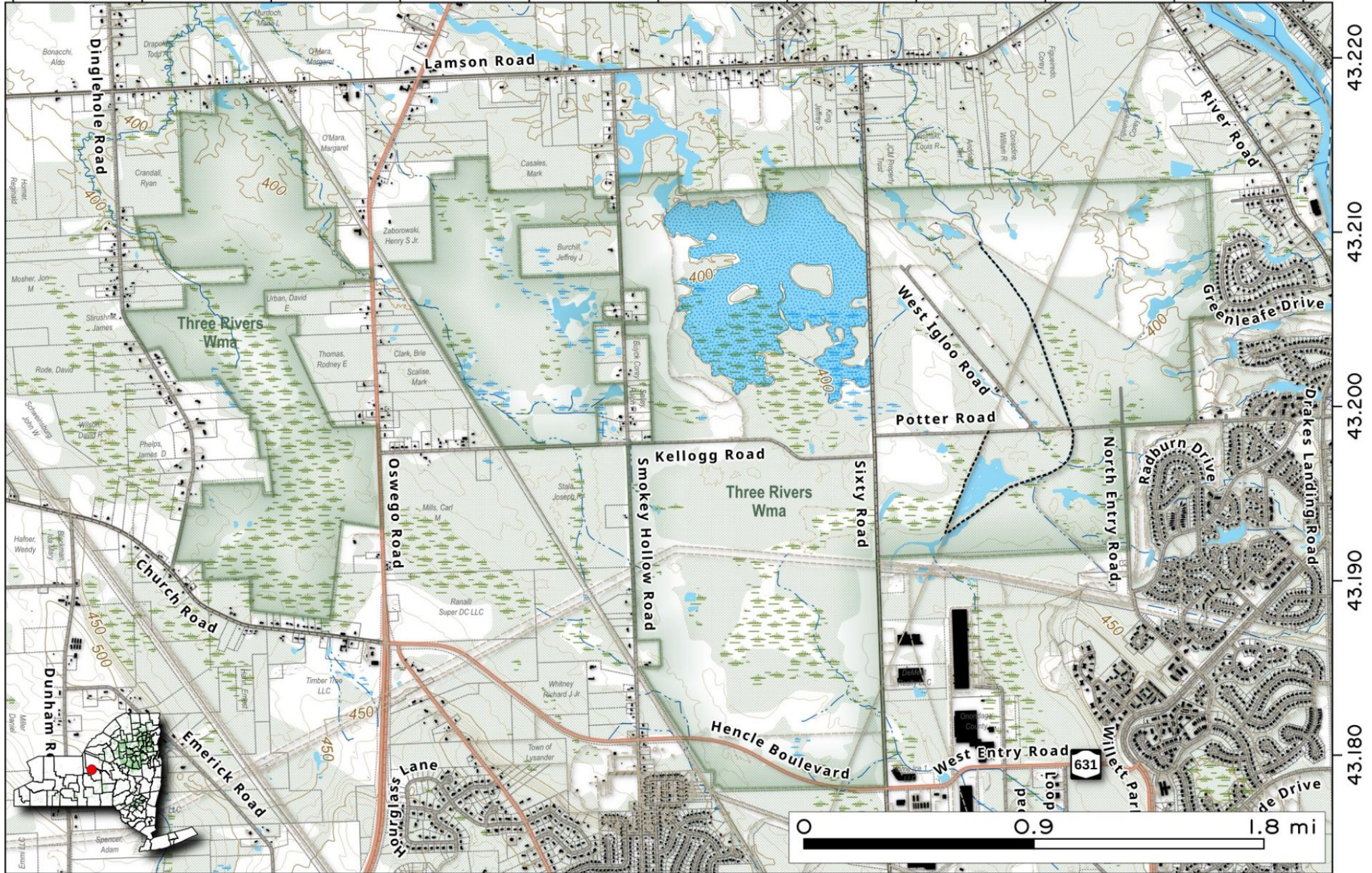


The Three Rivers Wildlife Management Area on the outskirts of suburban Baldwinsville named for its location at the junction of the Seneca, Oneida, and Oswego rivers. The 250-acre area features 29 water units, including marshes and ponds with planted evergreens and shrubs. Managed fields and wetlands support various wildlife, and prescribed burning maintains open spaces. Hunting, trapping, fishing and wildlife observation are enjoyed on these lands.



Map created by Andy Arthur on 8/14/2025 in QGIS 3.44.I-Solothurn. Contains US Forest Service Base Map, NYS DEC data with additional campsites added by Andy. More maps at andyarthur.org.

76.390 -76.380 -76.370 -76.360 -76.350 -76.340 -76.330 -76.320 -76.310 -76.300 -76.290



43.220
43.210
43.200
43.190
43.180