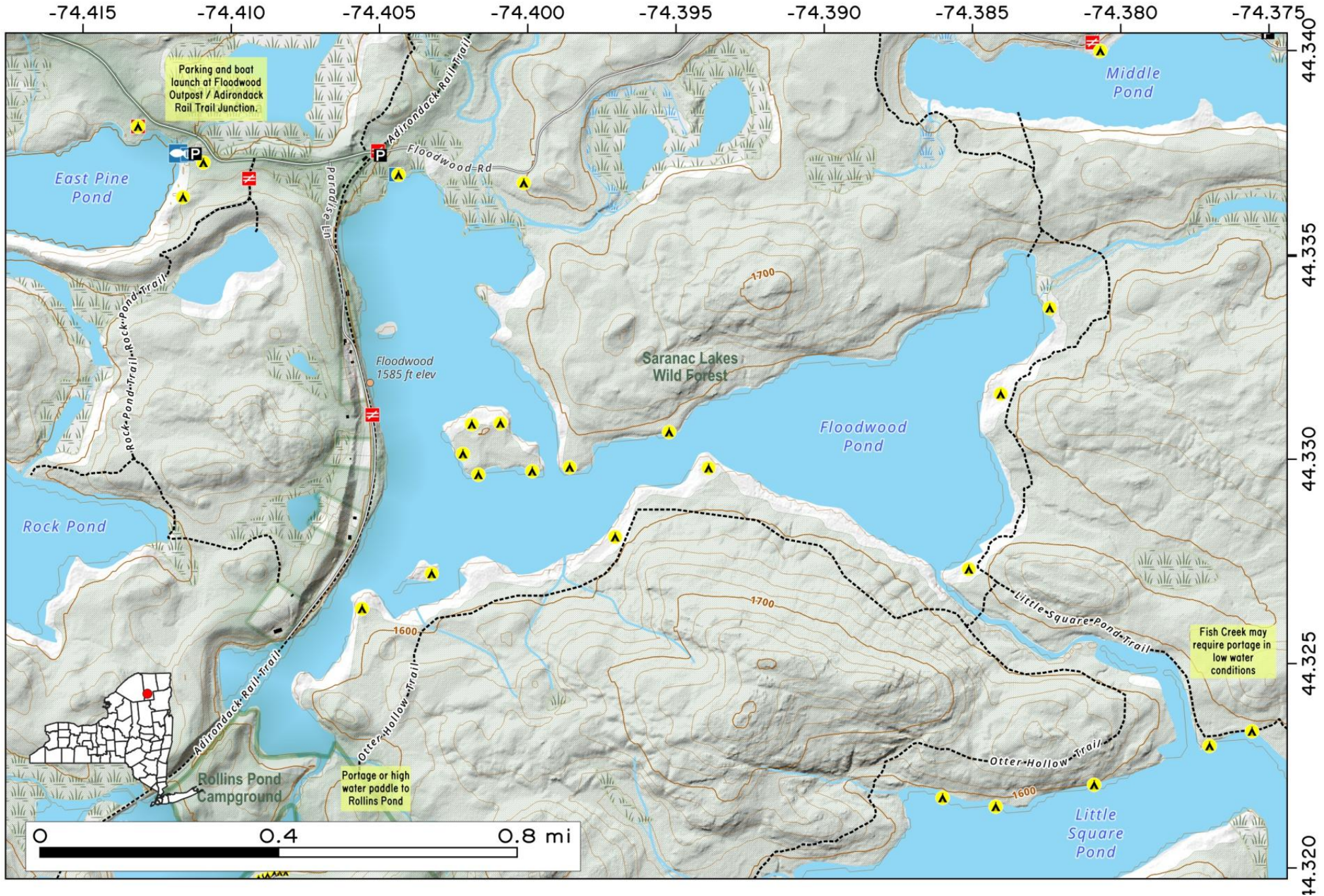


Floodwood Pond. Large pond near Floodwood on the Fish Creek that offers primitive campsites and paddling opportunities with connections to Rollins Pond, Little Pine Pond and Whey Pond.

Map created by Andy Arthur on 10/22/2025 in QGIS 3.44.3-Solothurn. Contains NYS GIS and DEC data with additional campsites added by Andy. More maps at andyarthur.org.



Floodwood Pond Loop. Recommend route shown by arrows from Floodwood Lake Parking to Fish Creek to Little Square Pond to low water portage Fish Creek to Square Pond to portage to Black Pond to portage to Whey Pond to portage over Rollins Pond Campground Road to Rollins Pond to Rollins Pond Creek Low Water Portage back to Floodwood Pond.

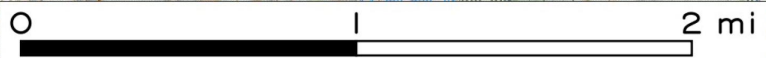


Map created by Andy Arthur on 12/23/2025 in QGIS 3.44.5-Solothurn. Contains NYS GIS and DEC data with additional campsites added by Andy. More maps at andyarthur.org.

-74.440 -74.430 -74.420 -74.410 -74.400 -74.390 -74.380 -74.370 -74.360 -74.350 -74.340



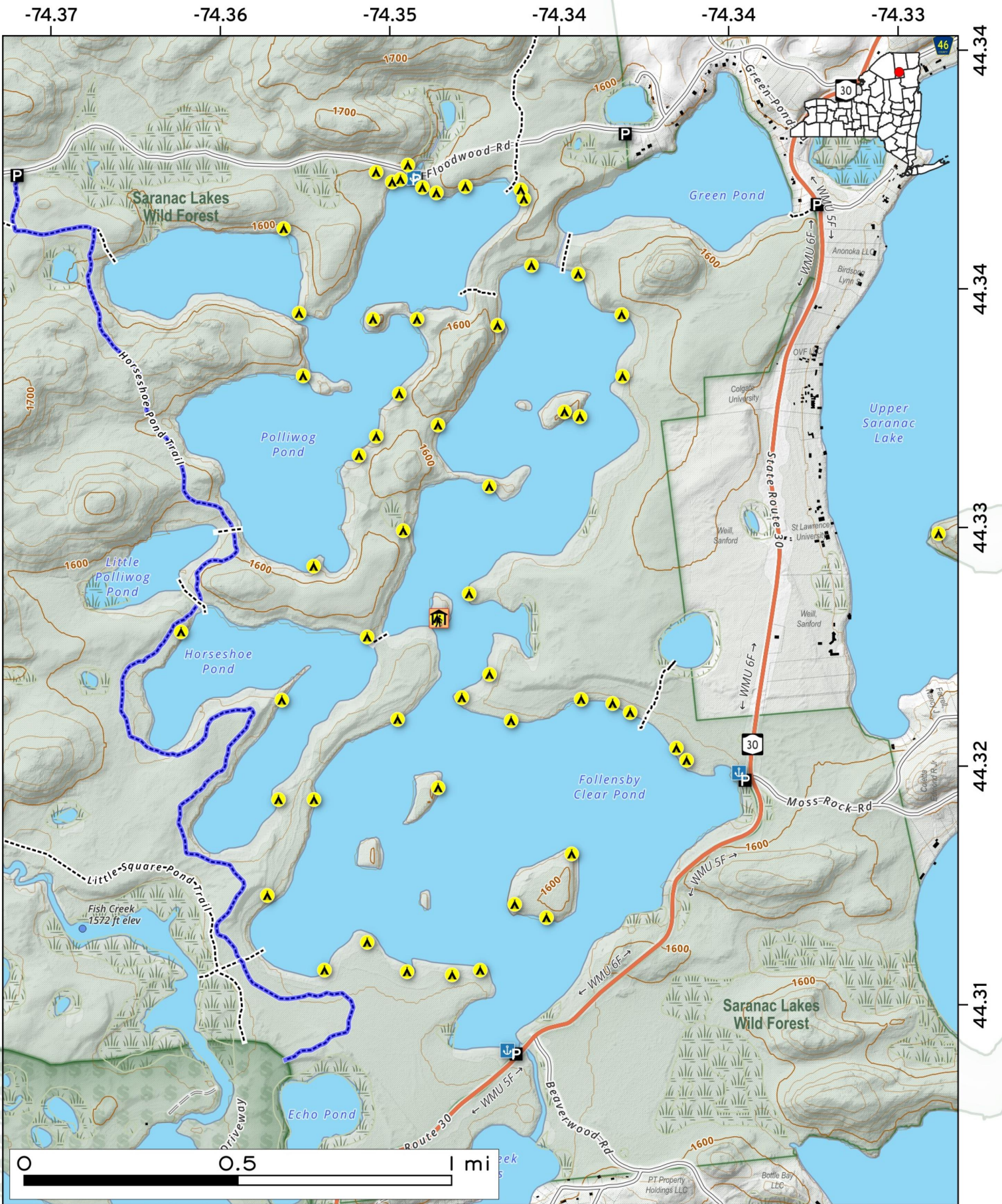
44.340
44.330
44.320
44.310
44.300



Follensby Clear Pond. Large 431 acre pond off Floodwood Road near St. Regis Canoe Area with several free primitive campsites along it's edge.



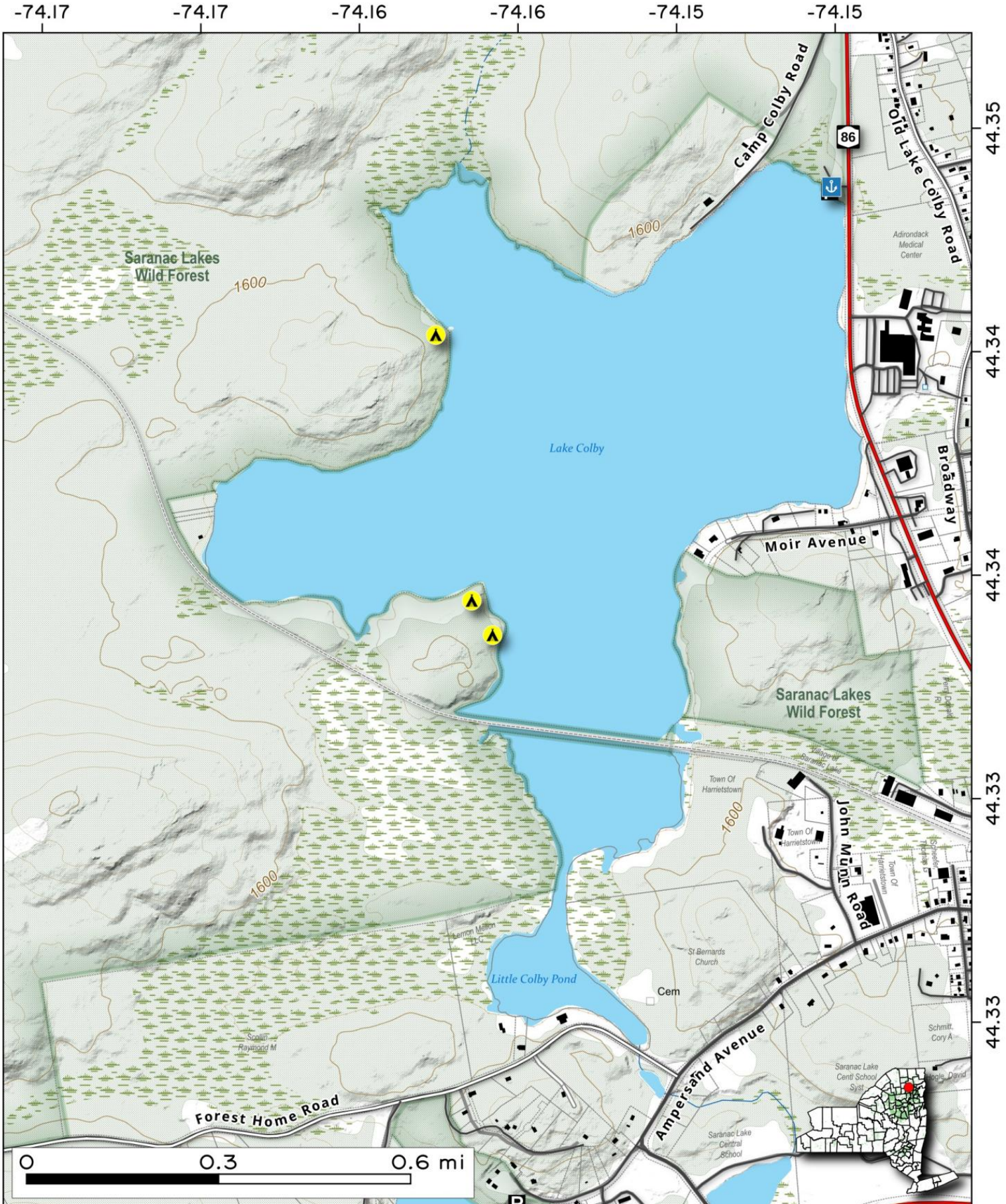
Map created by Andy Arthur on 2/2/2026 in QGIS 3.44.6-Solothurn. Data: NYS GIS and NYS DEC. More at andyarthur.org.



Lake Colby is a 2,873 acre lake across from the Adirondack Medical Center in Saranac Lake. Access via the fishing access lot. Several boat-in campsites on the west shore, also it s home to Camp Colby, a DEC Summer youth program site.

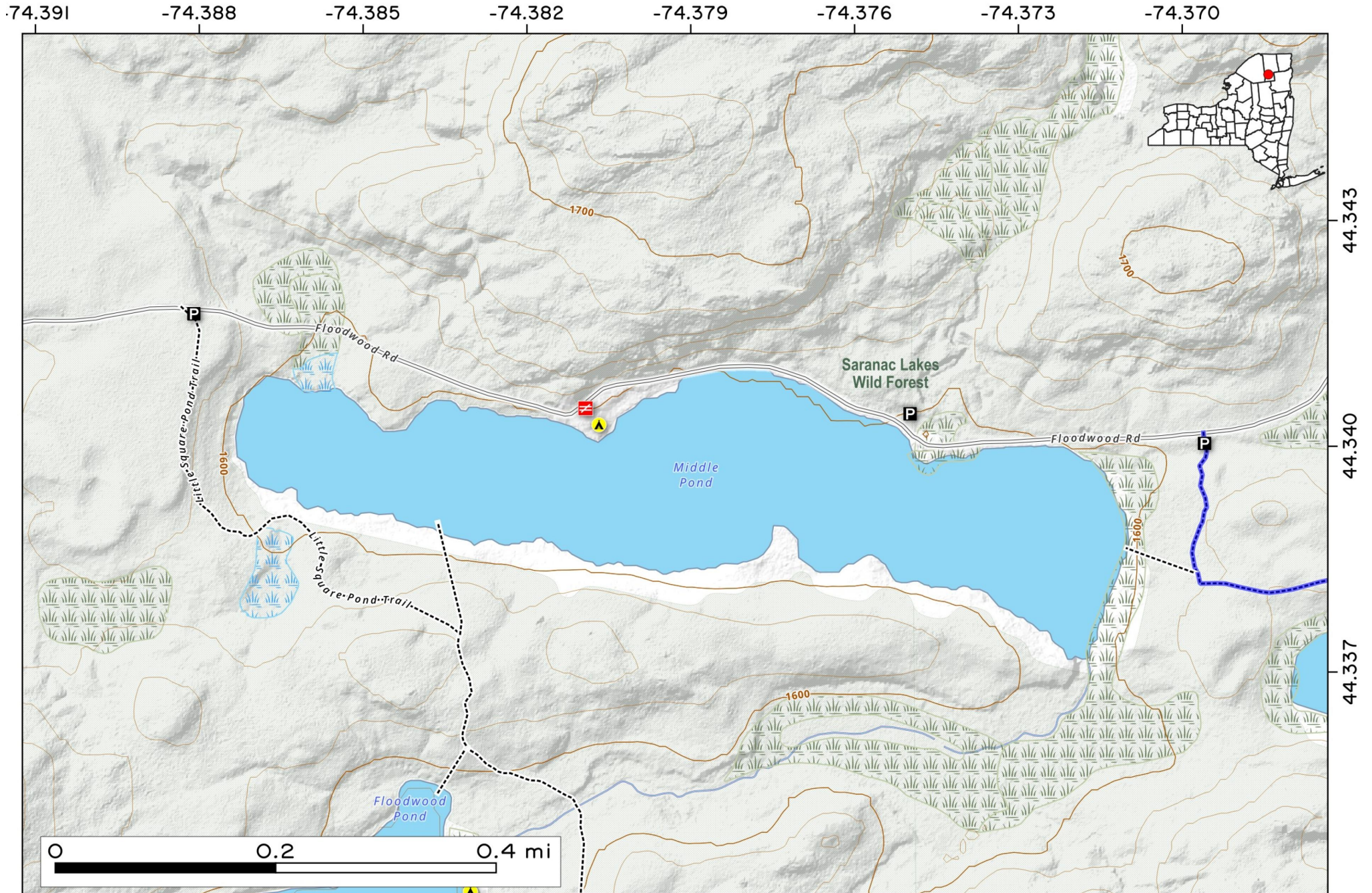


Map created by Andy Arthur on 9/8/2025 in QGIS 3.44.2-Solothurn. Contains US Forest Service Base Map, NYS DEC data with additional campsites added by Andy. More maps at andyarthur.org.



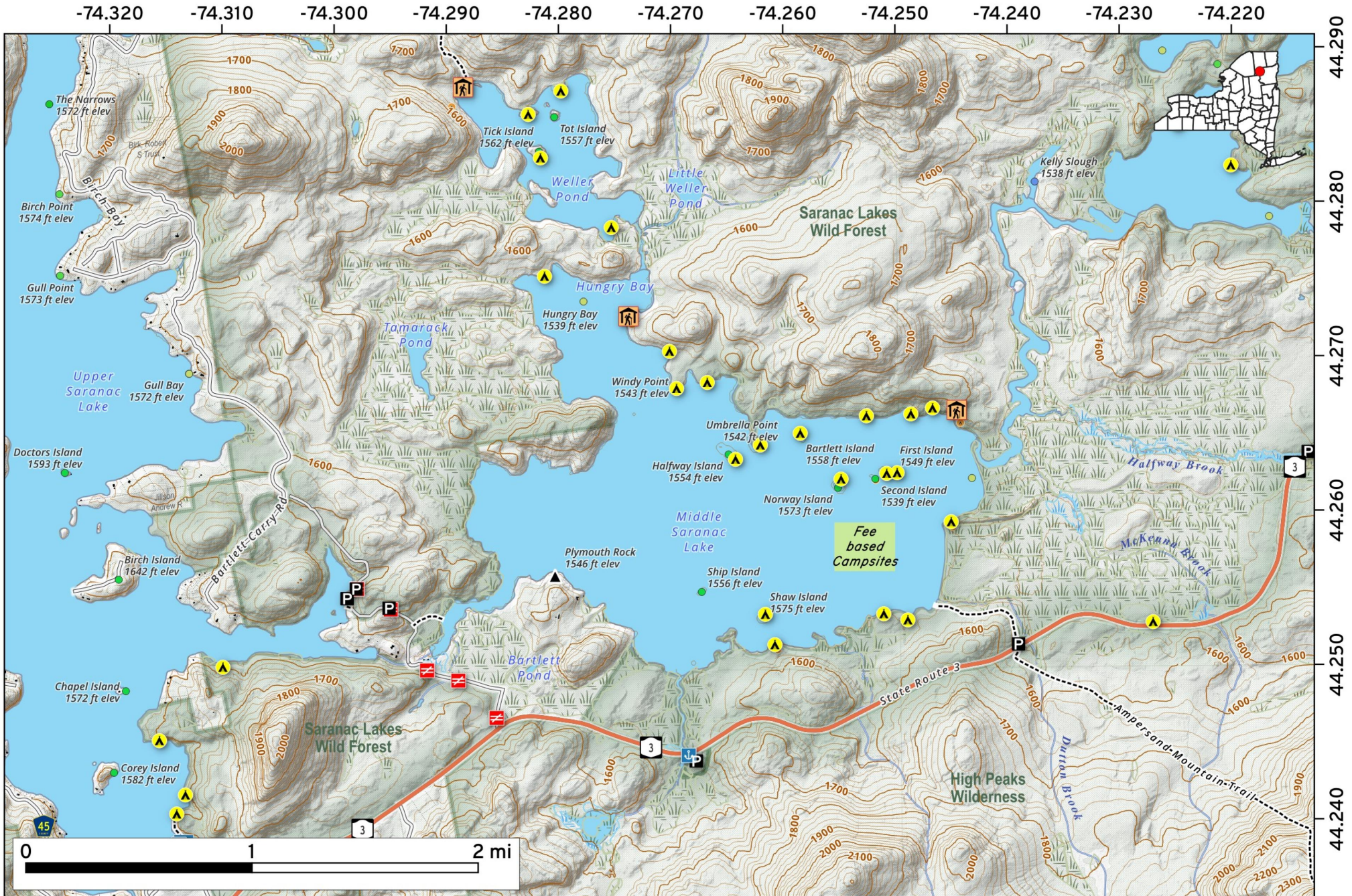
Middle Pond. 66 acre pond along Floodwood Road near the St. Regis Canoe Area.

Map created by Andy Arthur on 1/21/2026 in QGIS 3.44.6-Solothurn. Contains NYS GIS and DEC data with additional campsites added by Andy. More maps at andyarthur.org.



Middle Saranac Lake. Fee-based primitive campsites along Middle Saranac Lake that are part of the Saranac Lake Campground.

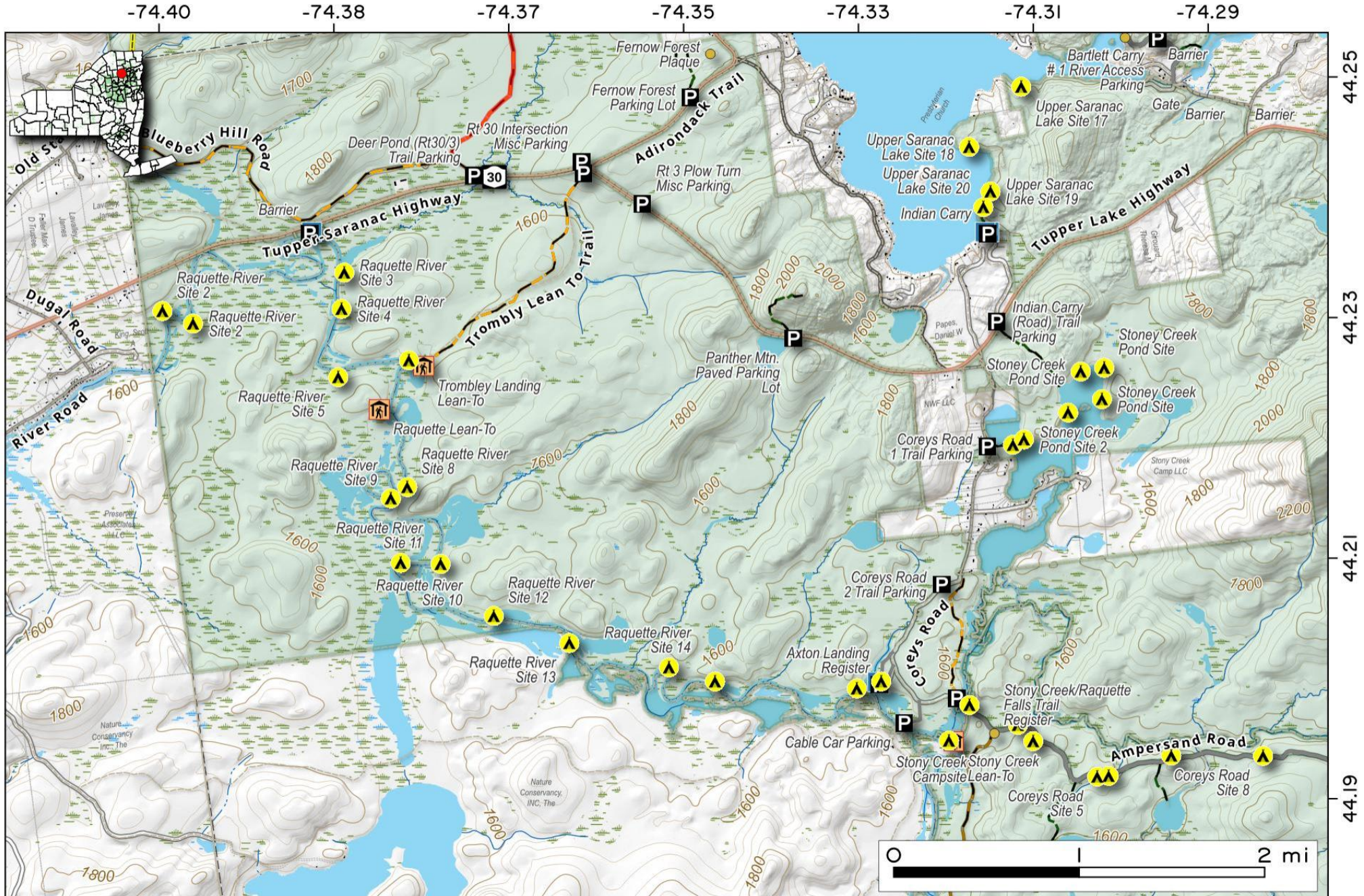
Map created by Andy Arthur on 1/27/2026 in QGIS 3.44.6-Solothurn. Data: NYS GIS and NYS DEC. More at andyarthur.org.



Raquette River - Crusher Boat Launch. Located at the section of Raquettee River nearest to NY 3 about 5 miles west of Tupper Lake.



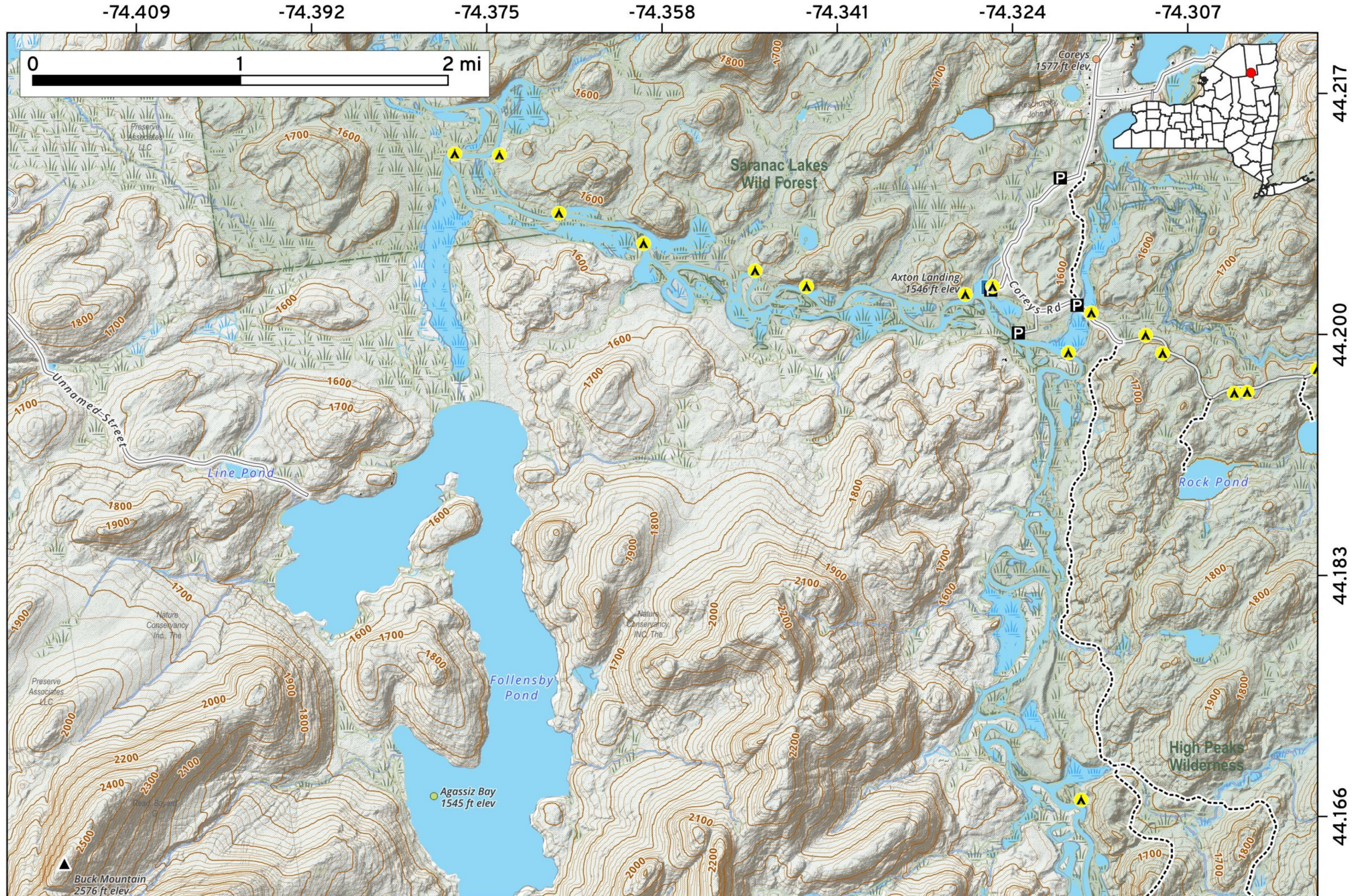
Map created by Andy Arthur on 3/27/2025 in QGIS 3.34.15-Prizren. Contains US Forest Service Base Map, NYS DEC data with additional campsites added by Andy. More maps at andyarthur.org.



Racquette River - Axton Landing.

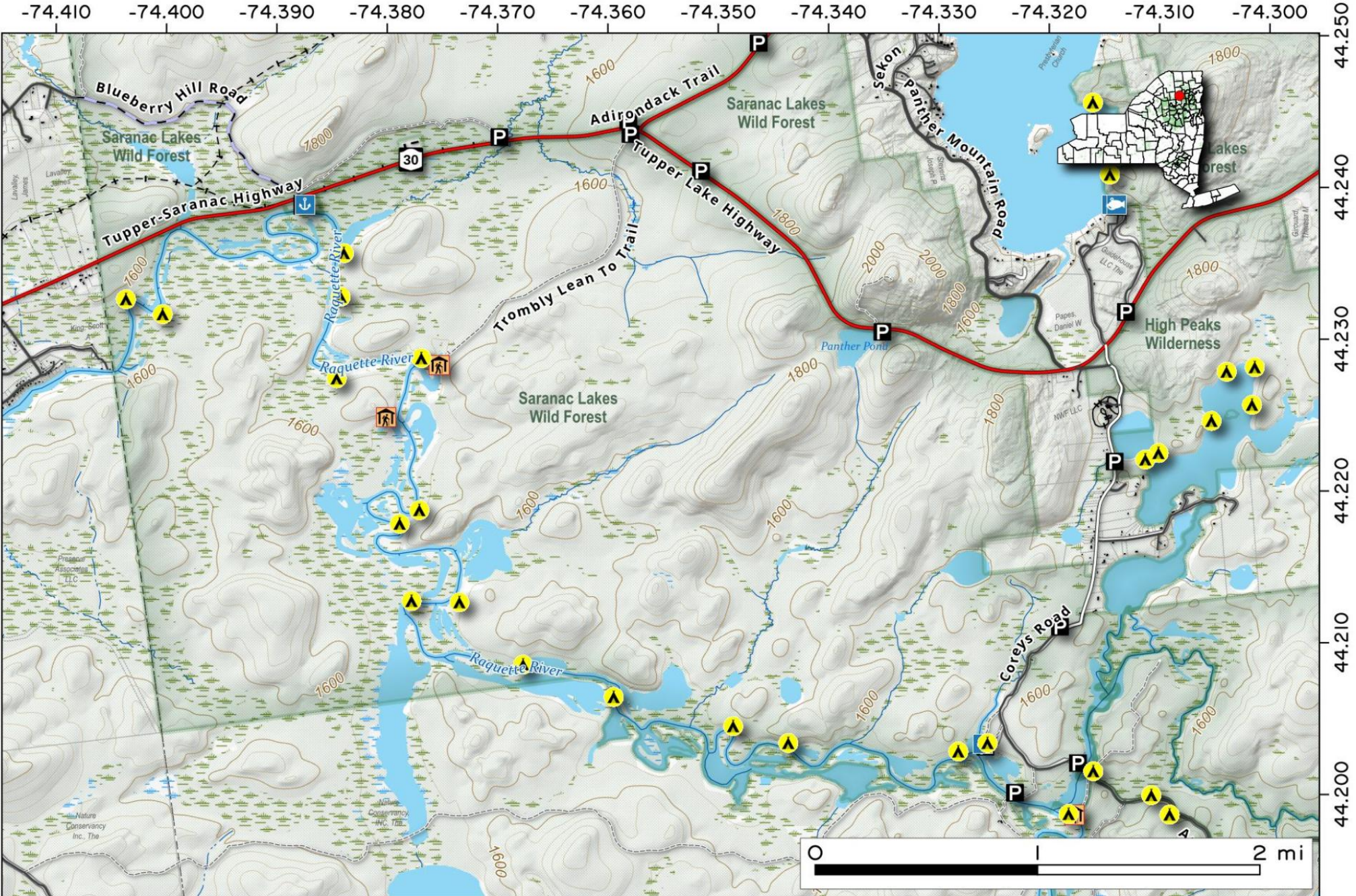
Access to the Racquette River for canoes from the parking area on Coreys Road outside of Saranac Lake.

Map created by Andy Arthur on 4/16/2026 in QGIS 3.44.9-Solothurn. Data: NYS GIS and NYS DEC. More at andyarthur.org.



Raquette River - NY 3 Crusher Boat Launch to Corey's Road is a winding flat water in the Saranac Lakes Wild Forest to east of Tupper Lake.

Map created by Andy Arthur on 7/1/2025 in QGIS 3.34.15-Prizren. Contains US Forest Service Base Map, NYS DEC data with additional campsites added by Andy. More maps at andyarthur.org.



*Saranac Wild Forest
Floodwood Area*

*Map by Andy Arthur
10/21/2025*

