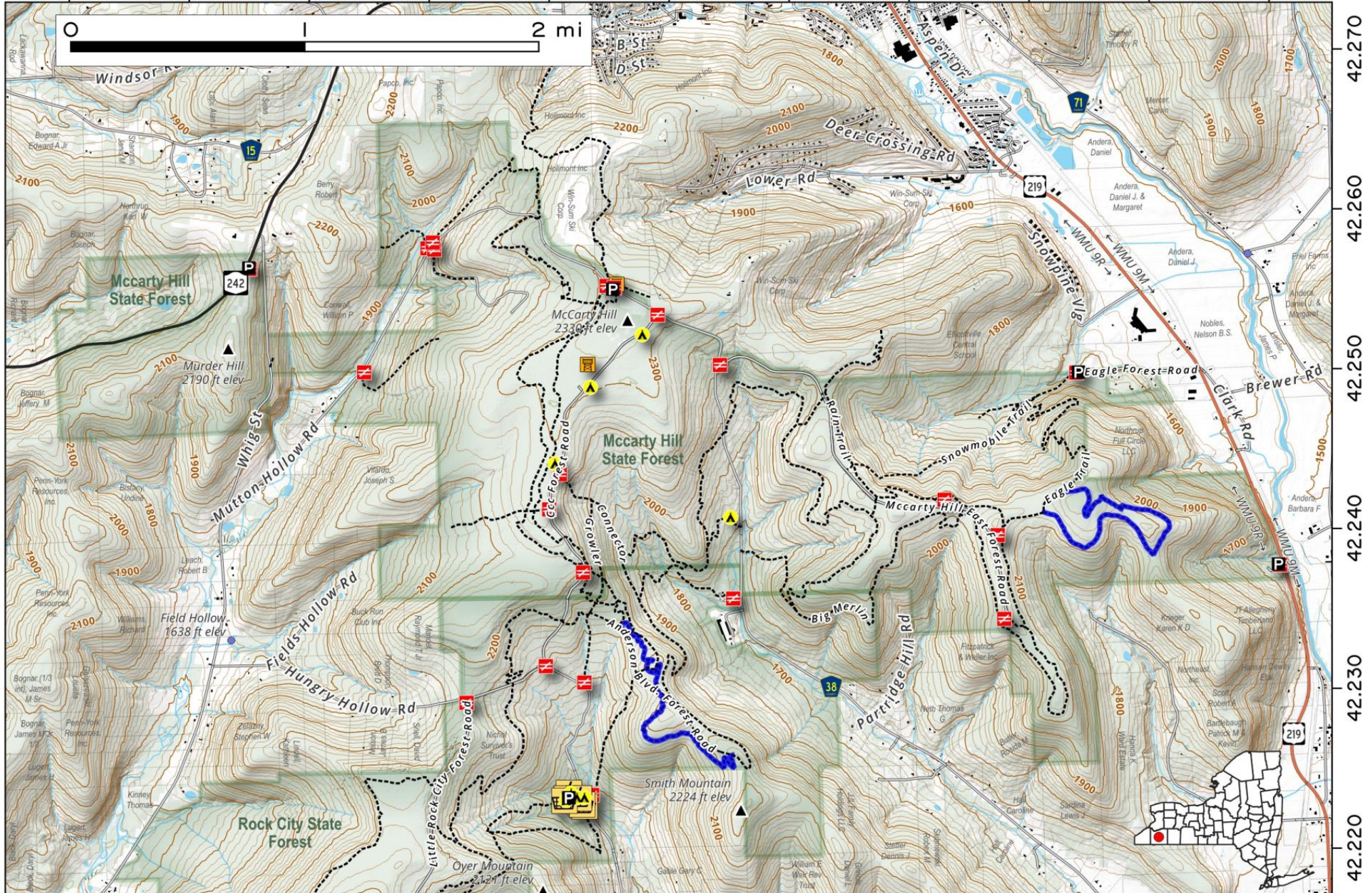


McCarthy Hill State Forest. Located between Holiday Valley Resort in Ellicottville and Rock City State Forest in Salamanca, McCarthy Hill has several roadside campsites and designated hiking and ski trails. It is roughly 3,200 acres.

Map created by Andy Arthur on 10/3/2025 in QGIS 3.44.3-Solothurn. Contains NYS GIS and DEC data with additional campsites added by Andy. More maps at andyarthur.org.



-78.740 -78.730 -78.720 -78.710 -78.700 -78.690 -78.680 -78.670 -78.660 -78.650 -78.640

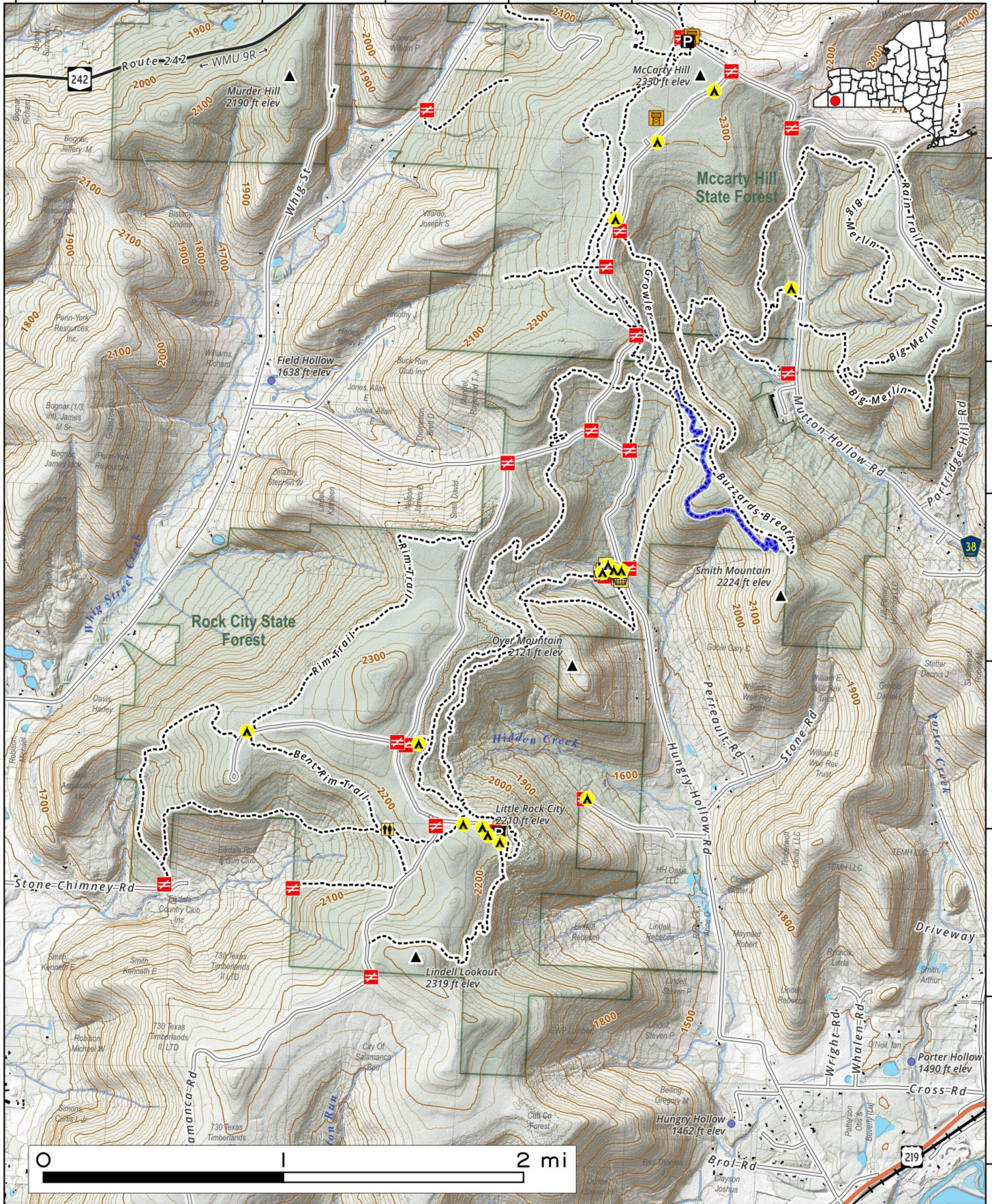


Located in Cattaraugus County, New York, **Rock City State Forest** is a 2,905-acre natural area famous for its massive conglomerate boulders. Naturally arranged like "buildings" and "streets," these house-sized formations offer labyrinthine passages, narrow corridors, and scenic hiking trails perfect for exploring unique geological wonders and diverse hardwood forest. Several designated tent campsites can be found with picnic pavilions at many of the sites.



Map created by Andy Arthur on 3/5/2026 in QGIS 3.44.7-Solothurn. Data: NYS GIS and NYS DEC. More at andyarthur.org.

-78.75 -78.74 -78.73 -78.72 -78.71 -78.70 -78.69 -78.68



42.25
42.24
42.23
42.22
42.21
42.20
42.19