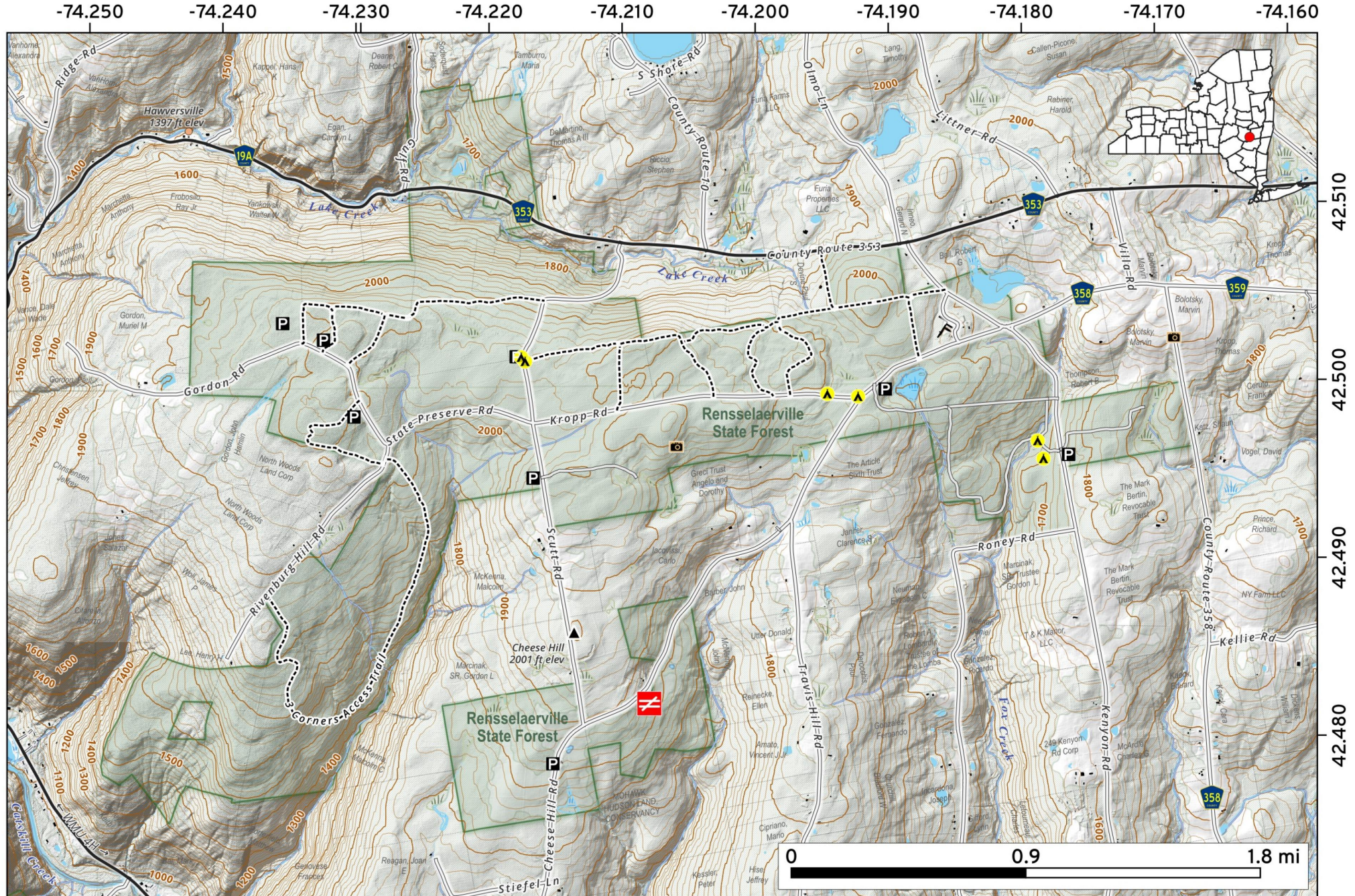


Rensselaerville State Forest is located in Albany and Schoharie Counties. This 2,572-acre forest features 8 miles of multi-use trails through scenic pine glades and hardwood stands. It offers year-round recreation, including hunting, primitive camping, and cross-country skiing near the hamlet of Rensselaerville.

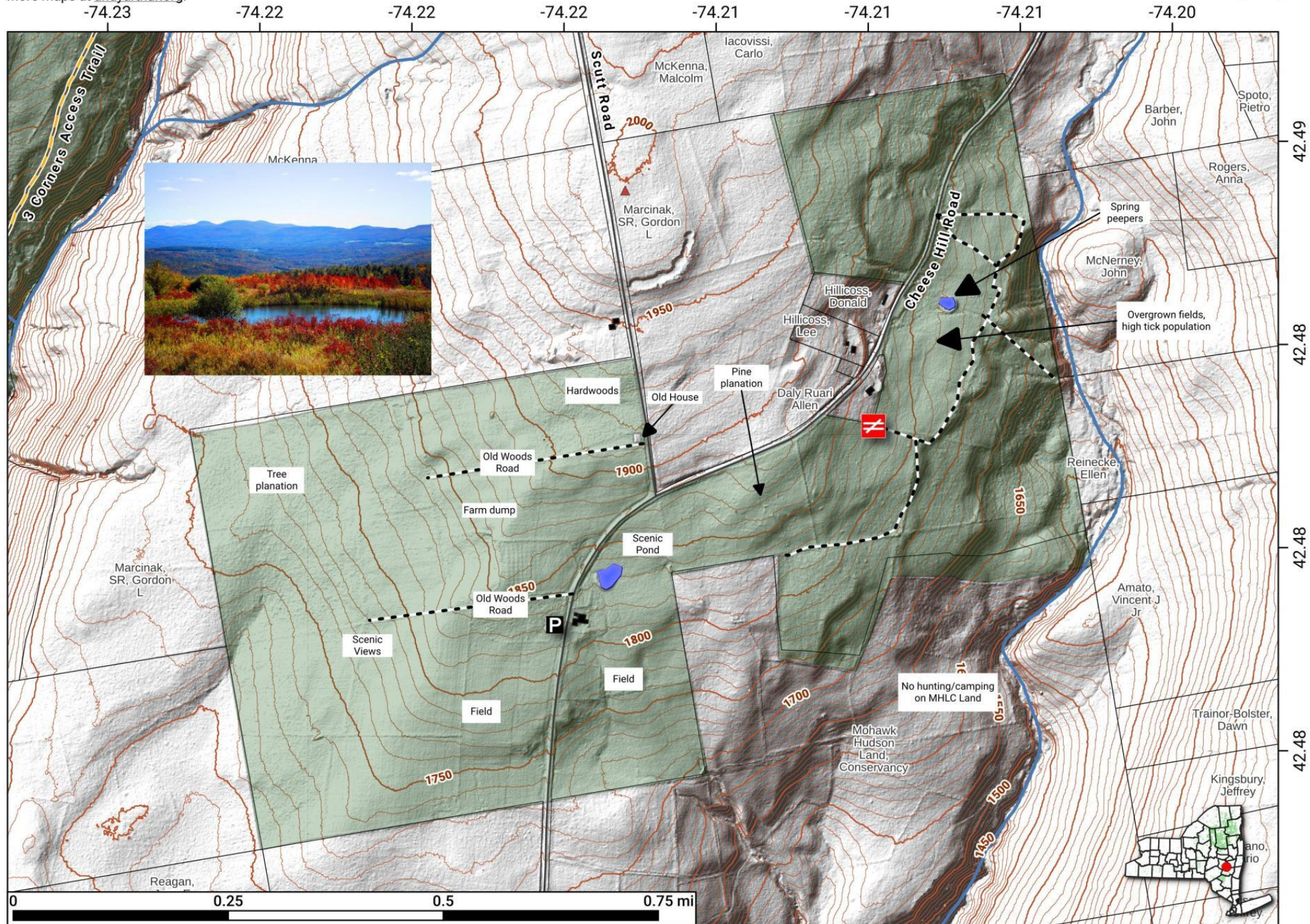


Map created by Andy Arthur on 2/26/2026 in QGIS 3.44.7-Solothurn. Data: NYS GIS and NYS DEC. More at andyarthur.org.



Rensselaerville State Forest - Hillcross Parcel.

Newly acquired state land is a scenic mixture of overgrown fields and farm woodlands overlooking the Catskill Mountain. Map is projected in Web Mercator 3857 and is 1:9,000 scale, True North. 20 foot contours. Area directly to south is owned by Mohawk Hudson Land Conservancy, no hunting or camping permitted. Created by Andy Arthur on 4/11/2023 in QGIS 3.30. Contains Albany Tax Map, DEC Trails/Assets, Additional Campsites/Trails by Andy other data ©OpenStreetMap Data, OSM Maintainers. More maps at andyarthur.org.



Rensselaerville State Forest - Hillcross Parcel.

Newly acquired state land is a scenic mixture of overgrown fields and farm woodlands overlooking the Catskill Mountain. Map is projected in Web Mercator 3857 and is 1:9,000 scale, True North. 20 foot contours. Area directly to south is owned by Mohawk Hudson Land Conservancy, no hunting or camping permitted. Created by Andy Arthur on 4/11/2023 in QGIS 3.30. Contains Albany Tax Map, DEC Trails/Assets, Additional Campsites/Trails by Andy other data ©OpenStreetMap Data, OSM Maintainers. More maps at andyarthur.org.

