

Pharaoh Lake is a 420 acre lake in the heart of Pharaoh Lake Wilderness, surrounded by a ring of 12 campsites and six lean-tos. The loop trail around the lake is roughly 5 miles.

Map created by Andy Arthur on 6/20/2025 in QGIS 3.34.15-Prizren. Contains US Forest Service Base Map, NYS DEC data with additional campsites added by Andy. More maps at andyarthur.org.

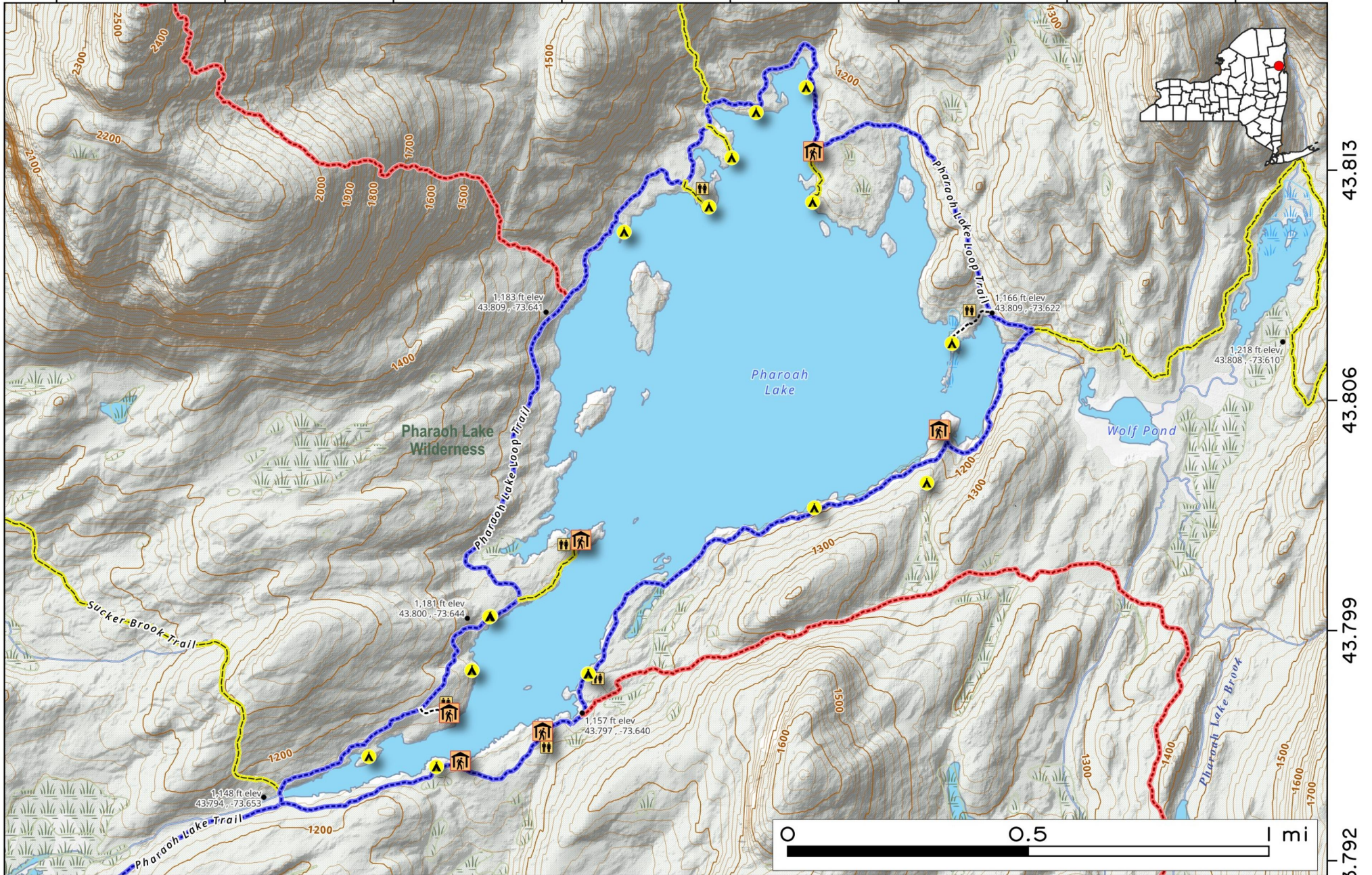


Pharoah Lake is one of the Adirondacks largest wilderness lakes at 441 acres. Sitting directly below Pharoah Mountain, it is home to six lean-tos and 12 designated campsites.

Map created by Andy Arthur on 12/29/2025 in QGIS 3.44.5-Solothurn. Contains NYS GIS and DEC data with additional campsites added by Andy. More maps at andyarthur.org.



-73.661 -73.654 -73.647 -73.640 -73.633 -73.626 -73.619 -73.612



43.813

43.806

43.799

43.792