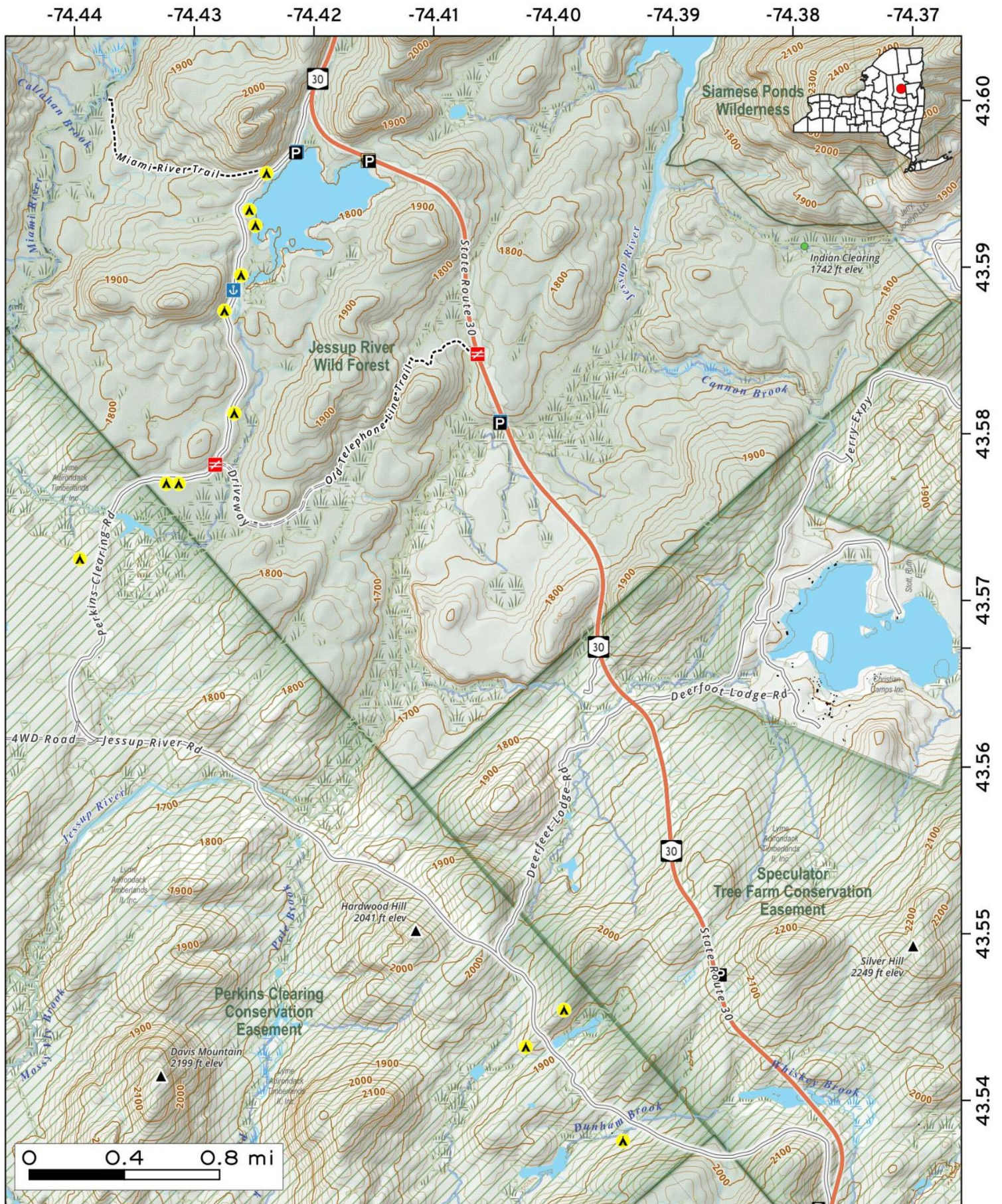


**Jessup River Road** is an old routing of NY 30 that provides access Mason Lake, Perkins Clearing and West Canada Lakes Wilderness. There are several roadside campsites that can be found along this road and provides access to launching points on Mason Lake.

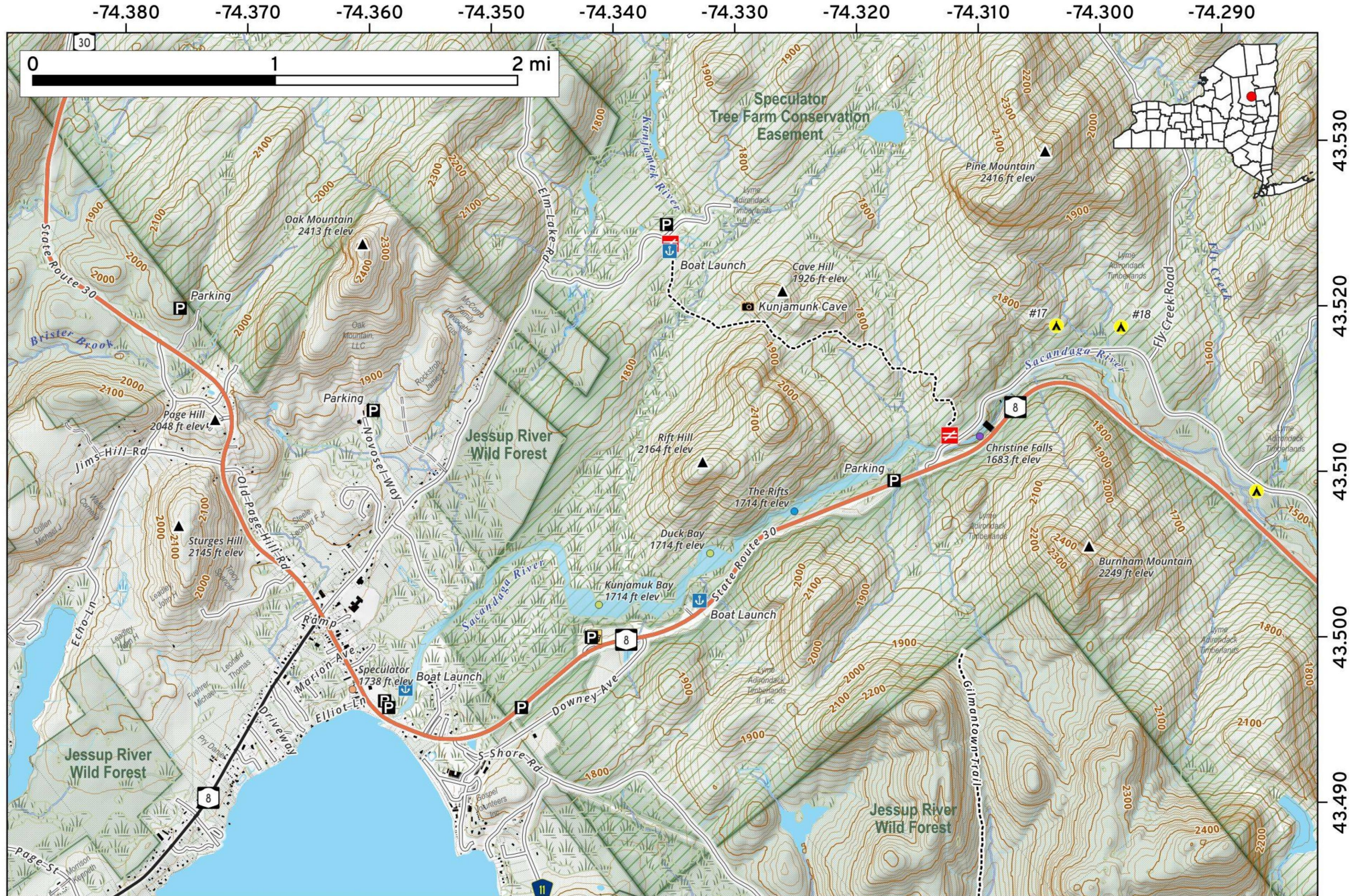


Map created by Andy Arthur on 5/6/2026 in QGIS 3.44.9-Solothurn. Data: NYS GIS and NYS DEC. More at [andyarthur.org](http://andyarthur.org)



The **Kunjamuk Cave**, found off Pine Lakes Road in Speculator Tree Farm, is a natural rock shelter that was dug out of a hillside. The cave is a popular destination for hikers and mountain bikers exploring the dirt roads of this conservation easement.

Map created by Andy Arthur on 5/6/2026 in QGIS 3.44.9-Solothurn. Data: NYS GIS and NYS DEC. More at [andyarthur.org](http://andyarthur.org)



**Old Route 8B** is the pre-1968 routing of NY 8 & 30 south of Speculator that offers access to Austin Falls along a bumpy old concrete road along with several other campsites and roads and trails in the Speculator Tree Farm.

Map created by Andy Arthur on 4/30/2026 in QGIS 3.44.9-Solothurn. Data: NYS GIS and NYS DEC. More at [andyarthur.org](http://andyarthur.org)

