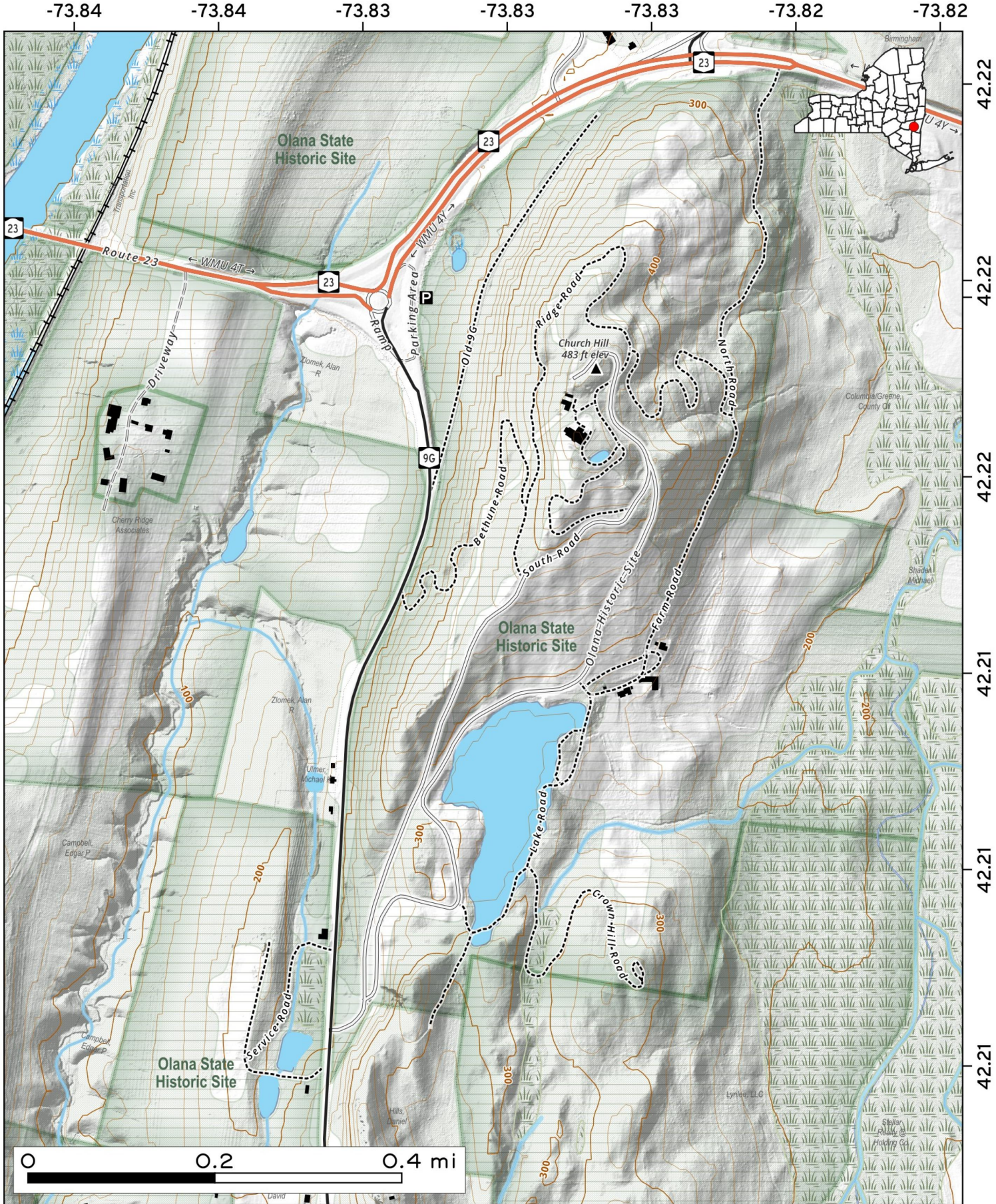


Olana features five miles of carriage roads designed by artist Frederic Church as a "three-dimensional canvas." These gravel paths offer panoramic views of the Hudson Valley and Catskills. You can park at the Rip Van Winkle Bridge lot at NY 23 and NY 9J for free to access the Hudson River Skywalk, which connects to Olana's trails.



Map created by Andy Arthur on 3/16/2026 in QGIS 3.44.7-Solothurn. Data: NYS GIS and NYS DEC. More at andyarthur.org.

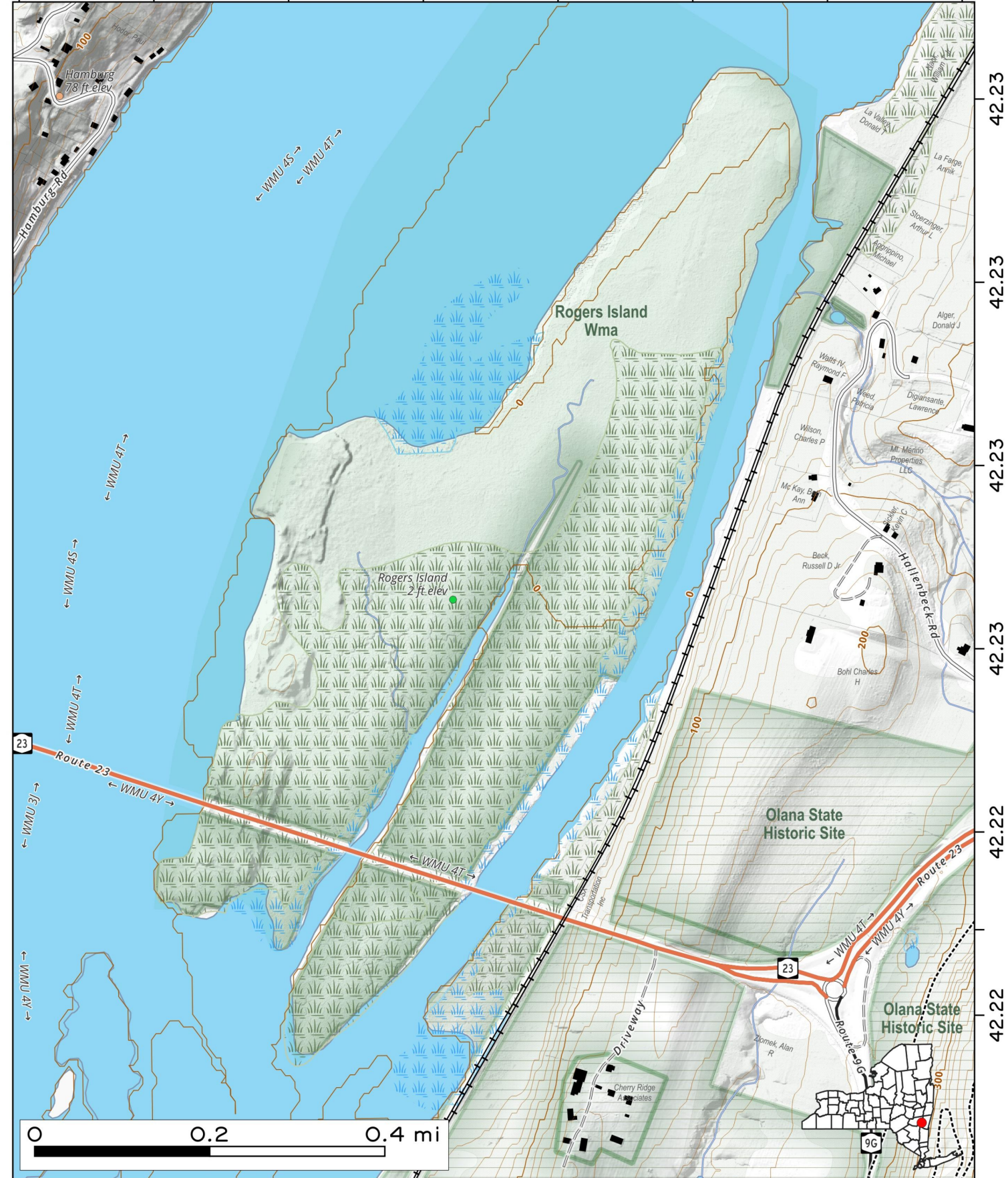


Rogers Island WMA is a 281-acre Hudson River island managed for wildlife habitat and recreation, including hunting, fishing, and birding. Accessible only by boat, it features forested uplands, tidal marshes, and mudflats. It is also historically significant as a major British military complex during the French and Indian War and the "spiritual home" of the U.S. Army Rangers.



Map created by Andy Arthur on 11/14/2025 in QGIS 3.44.4-Solothurn. Contains NYS GIS and DEC data with additional campsites added by Andy. More maps at andyarthur.org.

-73.85 -73.85 -73.84 -73.84 -73.84 -73.84 -73.83 -73.83



42.23
42.23
42.23
42.23
42.22
42.22