

Alma Pond. Designated areas along Alma Pond Road (County Route 38) for access of Alma Pond for fishing is shown in green on this map.

Map created by Andy Arthur on 1/5/2026 in QGIS 3.44.6-Solothurn. Contains NYS GIS and DEC data with additional campsites added by Andy. More maps at [andyarthur.org](http://andyarthur.org).

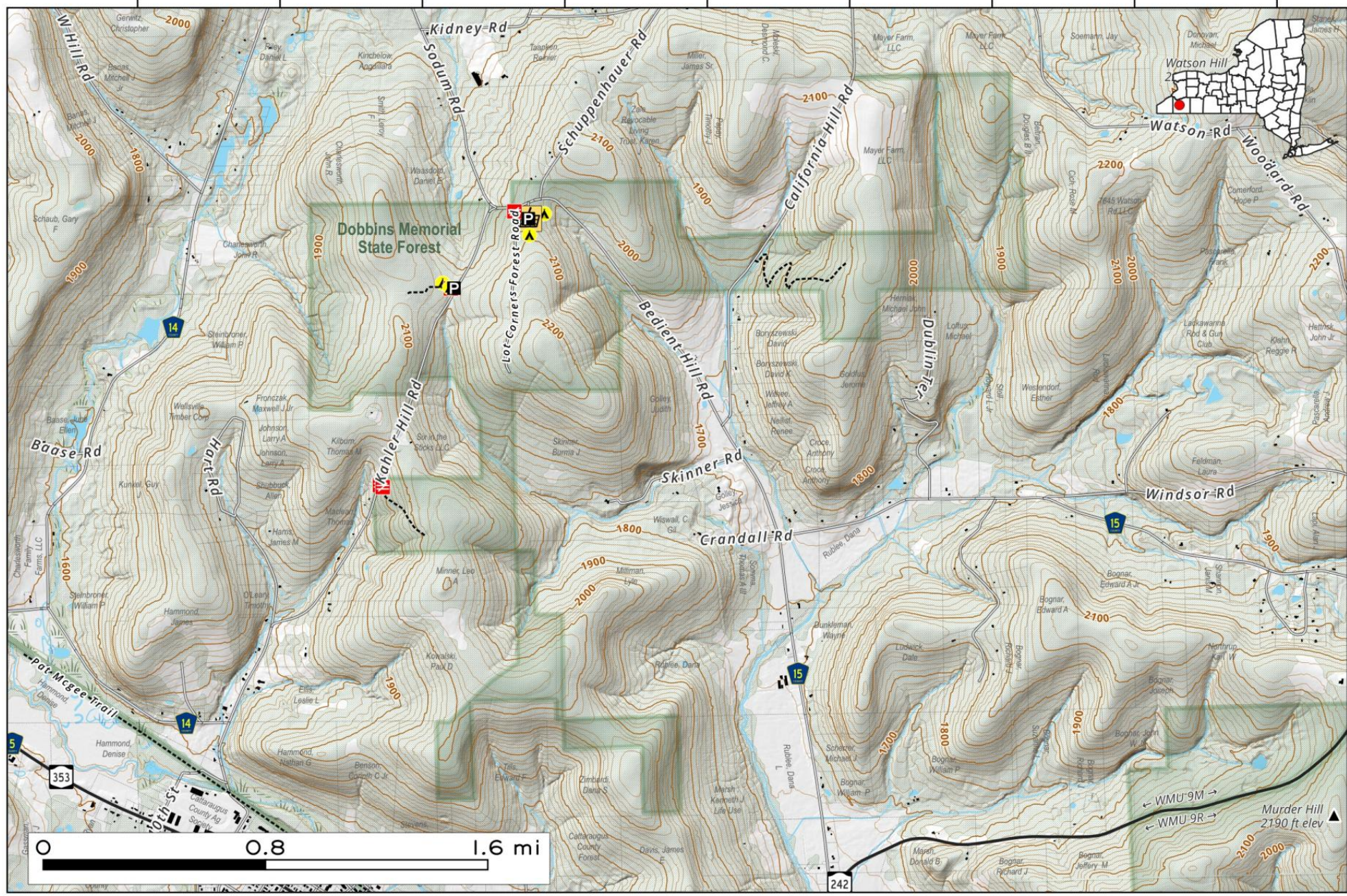


Harry E. Dobbins Memorial State Forest is located near Salamanca on hills of the the Allegheny Plateau, it features lush forests, diverse wildlife, and scenic hiking trails. Visitors enjoy hiking, hunting, picnics, primitive campsites and observing nature.



Map created by Andy Arthur on 10/9/2025 in QGIS 3.44.3-Solothurn. Contains NYS GIS and DEC data with additional campsites added by Andy. More maps at [andyarthur.org](http://andyarthur.org).

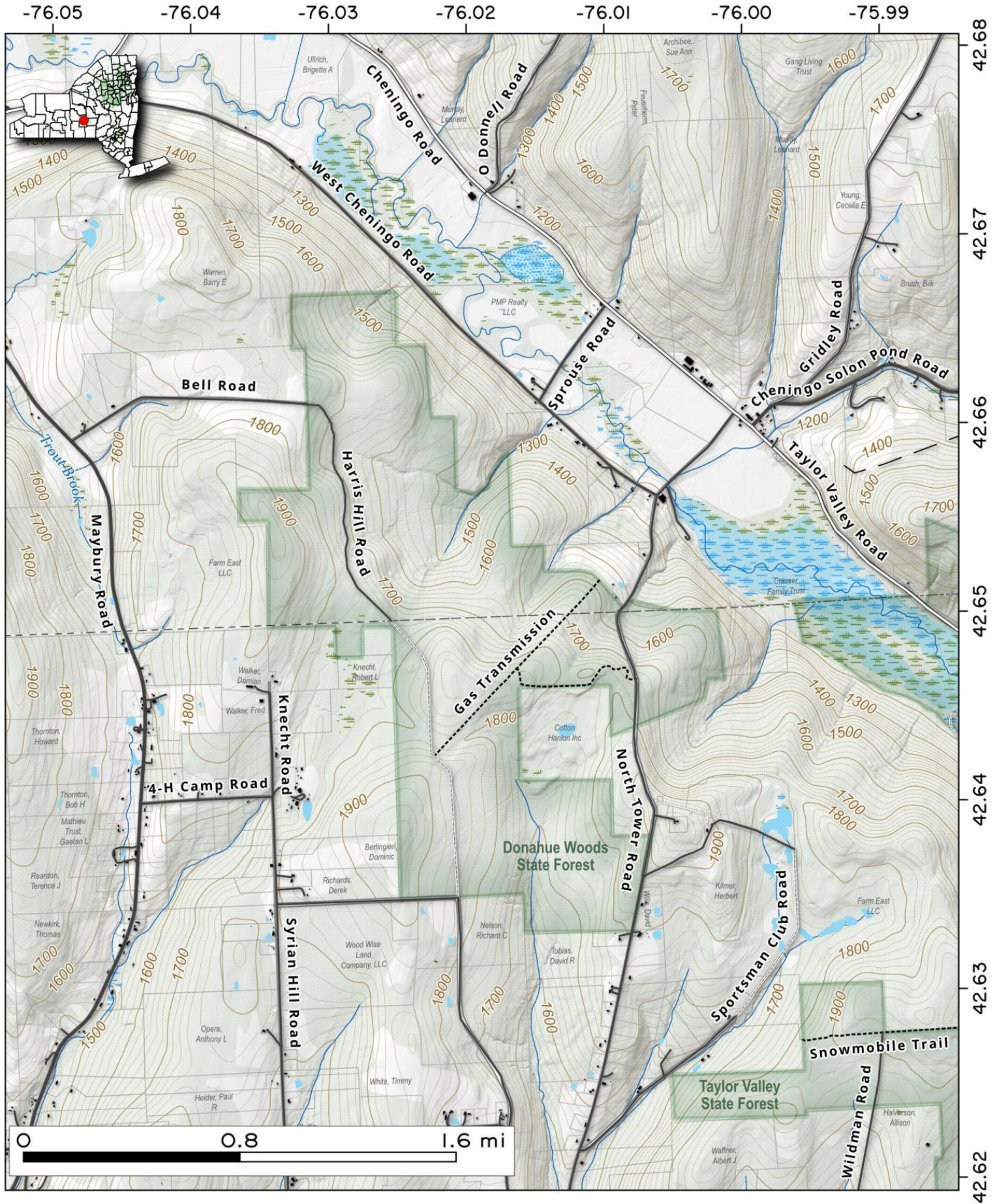
-78.810    -78.800    -78.790    -78.780    -78.770    -78.760    -78.750    -78.740    -78.730



42.290  
42.280  
42.270  
42.260  
42.250

Donahue Wood State Forest is a roughly 2,500 acres on the hill above Taylor Valley State Forest and hamlet of Cheningo.

Map created by Andy Arthur on 6/27/2025 in QGIS 3.34.15-Prizren. Contains US Forest Service Base Map, NYS DEC data with additional campsites added by Andy. More maps at [andyarthur.org](http://andyarthur.org).



**Little John WMA** encompasses 7,918 acres of mature forest and serpentine wetlands. Famous for heavy snowfall, it supports hunting, trapping, and birdwatching. Visitors explore roughly 18 miles of trails and unpaved roads within this gently rolling, high-elevation landscape.

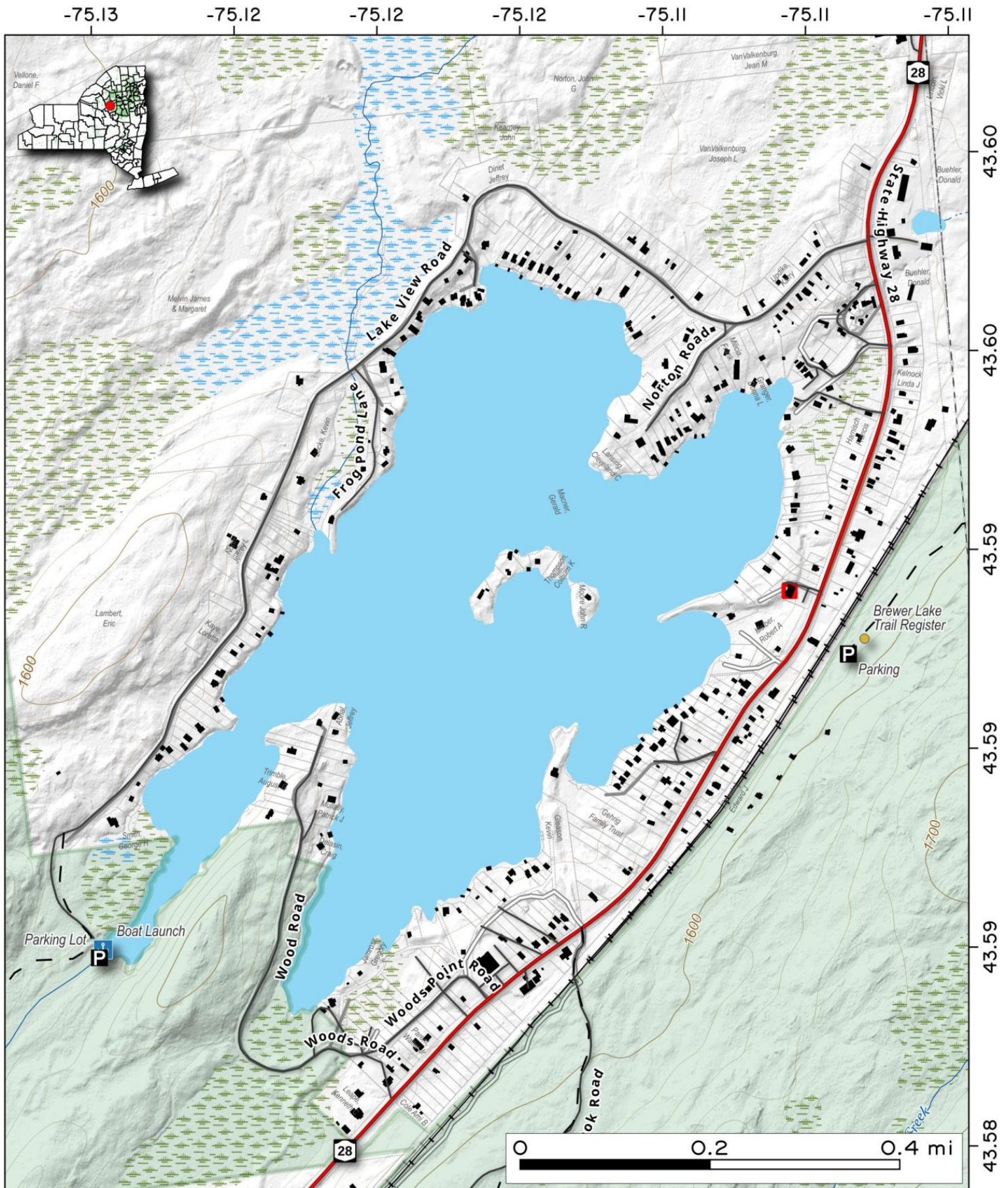


Map created by Andy Arthur on 2/9/2026 in QGIS 3.44.7-Solothurn. Data: NYS GIS and NYS DEC. More at [andyarthur.org](http://andyarthur.org).



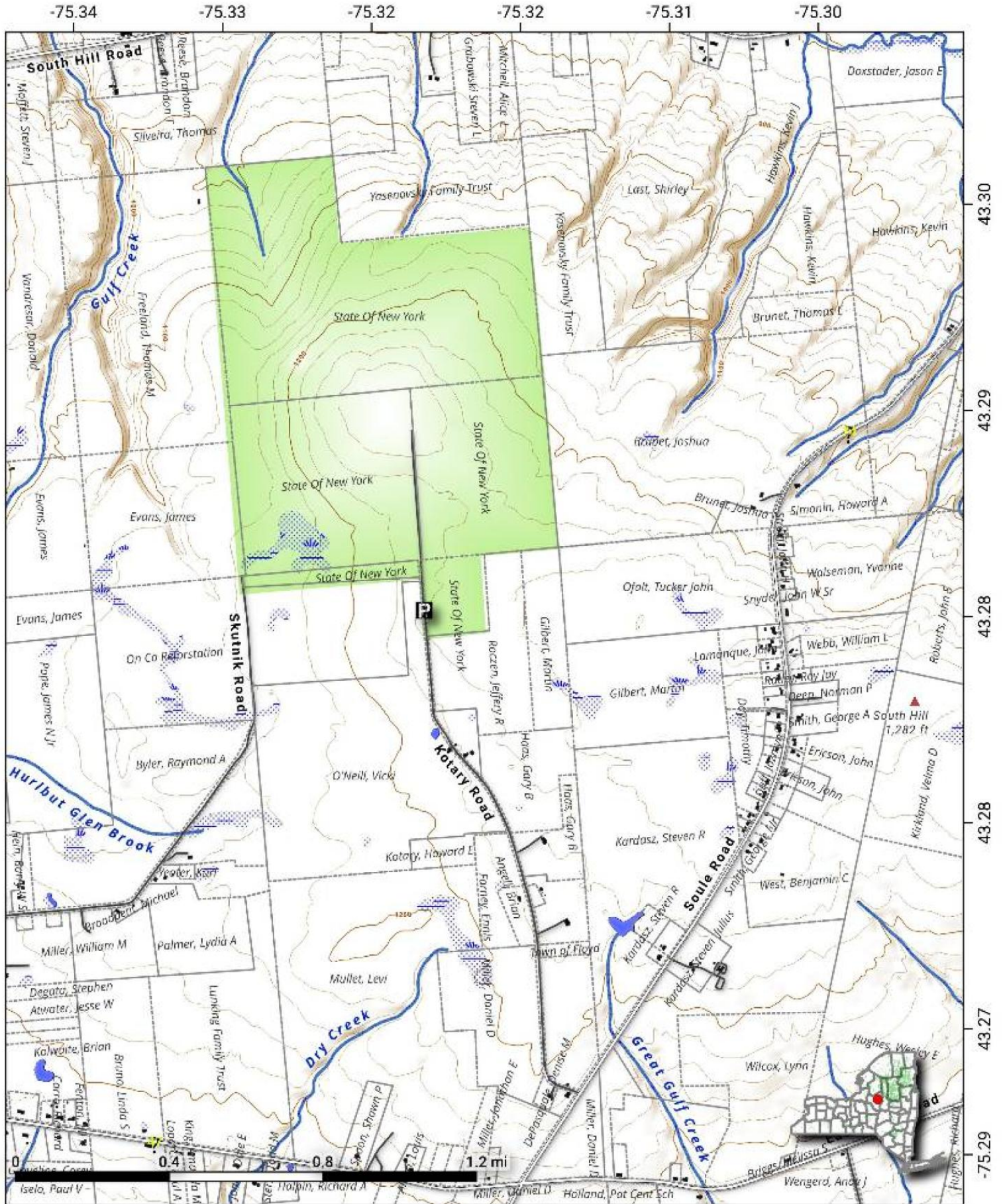
**Otter Lake**. 148 acre developed lake. Public access via a parking lot and boat launch the end of Lake View Road on the west side of lake. South of there is the Otter Lake Outlet Trail.

Map created by Andy Arthur on 4/17/2025 in QGIS 3.34.15-Prizren. Contains US Forest Service Base Map, NYS DEC data with additional campsites added by Andy. More maps at [andyarthur.org](http://andyarthur.org).



**South Hill State Forest.** The 622-acre South Hill State Forest is located in Oneida County. Note: Kotary Road is not plowed through to the state forest in winter.

Map created by Andy Arthur on 6/5/2024 in QGIS 3.34.6-Prizren. Contains DEC Trails/Assets, Additional Campsites/Trails by Andy other data ©OpenStreetMap Data, OSM Maintainers. More maps at [andyarthur.org](http://andyarthur.org).





# West Parishville State Forest. 792 acres of state land roughly 5 miles south-east of Potsdam in the St. Lawrence Flatlands.



Map created by Andy Arthur on 2/5/2026 in QGIS 3.44.7-Solothurn. Data: NYS GIS and NYS DEC. More at [andyarthur.org](http://andyarthur.org).

