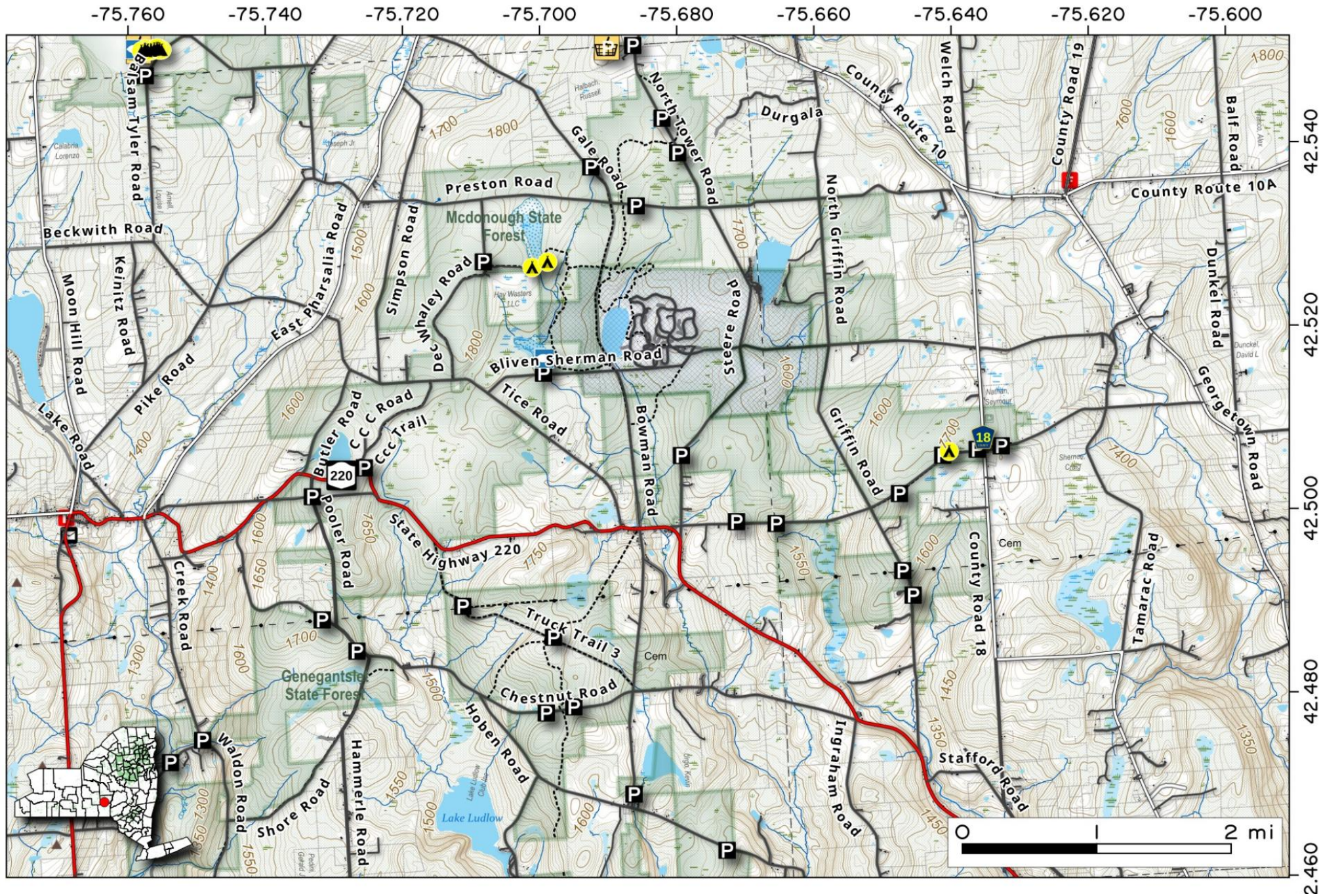


McDonough State Forest spans 5,708 acres in the Allegheny Plateau, offering recreation like hiking the Finger Lakes Trail, snowmobiling, mountain biking, horseback riding, and fishing. Diverse wildlife and nearby Bowman Lake State Park provide additional opportunities for camping, swimming, and more developed activities.

Map created by Andy Arthur on 7/28/2025 in QGIS 3.44.0-Solothurn. Contains US Forest Service Base Map, NYS DEC data with additional campsites added by Andy. More maps at andyarthur.org.

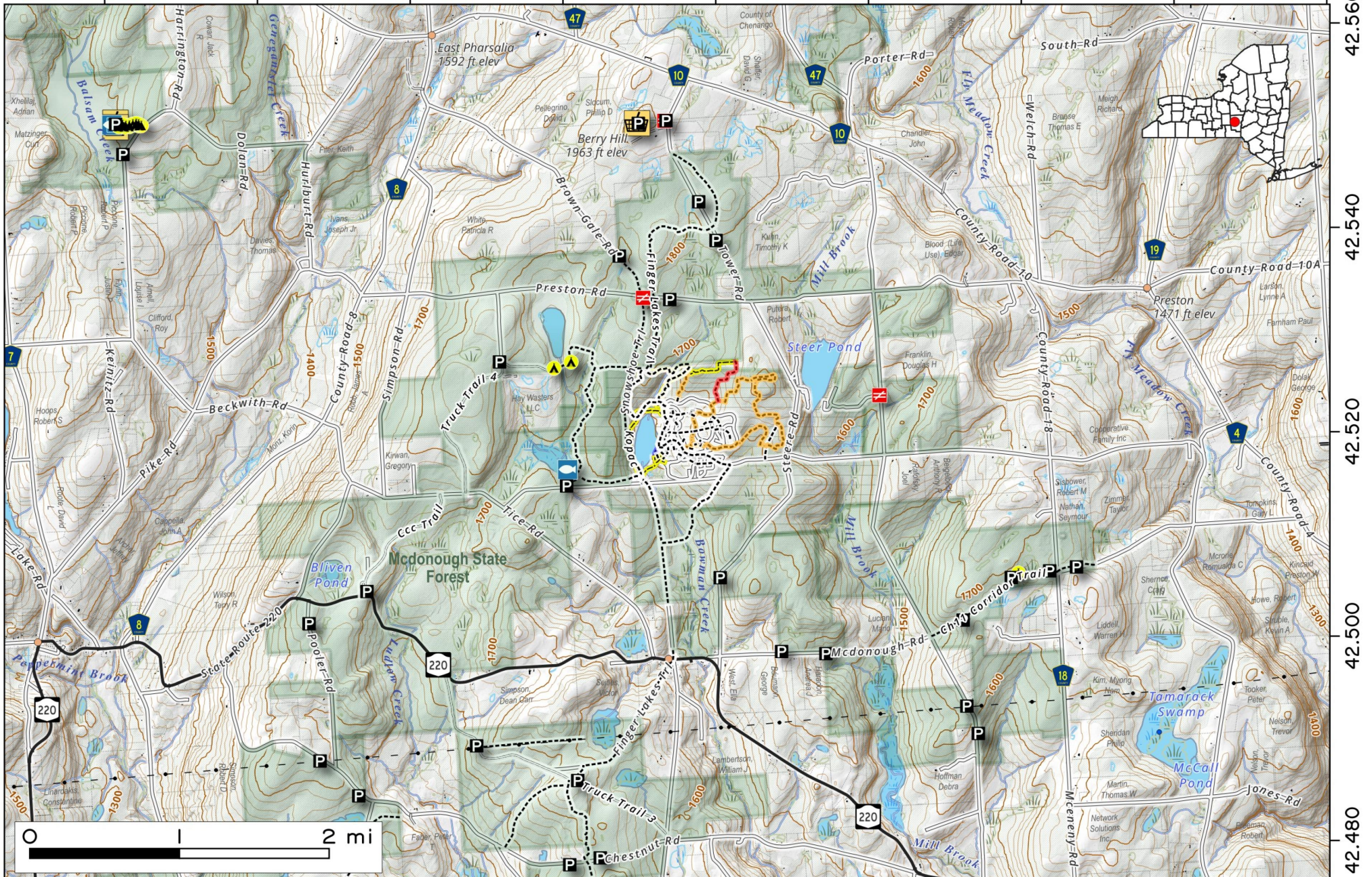


Bowman Lake and Whalen Pond. Trails and state land in and around the Bowman Lake State Park outside of McDonough, NY.

Map created by Andy Arthur on 12/8/2025 in QGIS 3.44.5-Solothurn. Contains NYS GIS and DEC data with additional campsites added by Andy. More maps at andyarthur.org.



-75.760 -75.740 -75.720 -75.700 -75.680 -75.660 -75.640 -75.620 -75.600



42.560
42.540
42.520
42.500
42.480