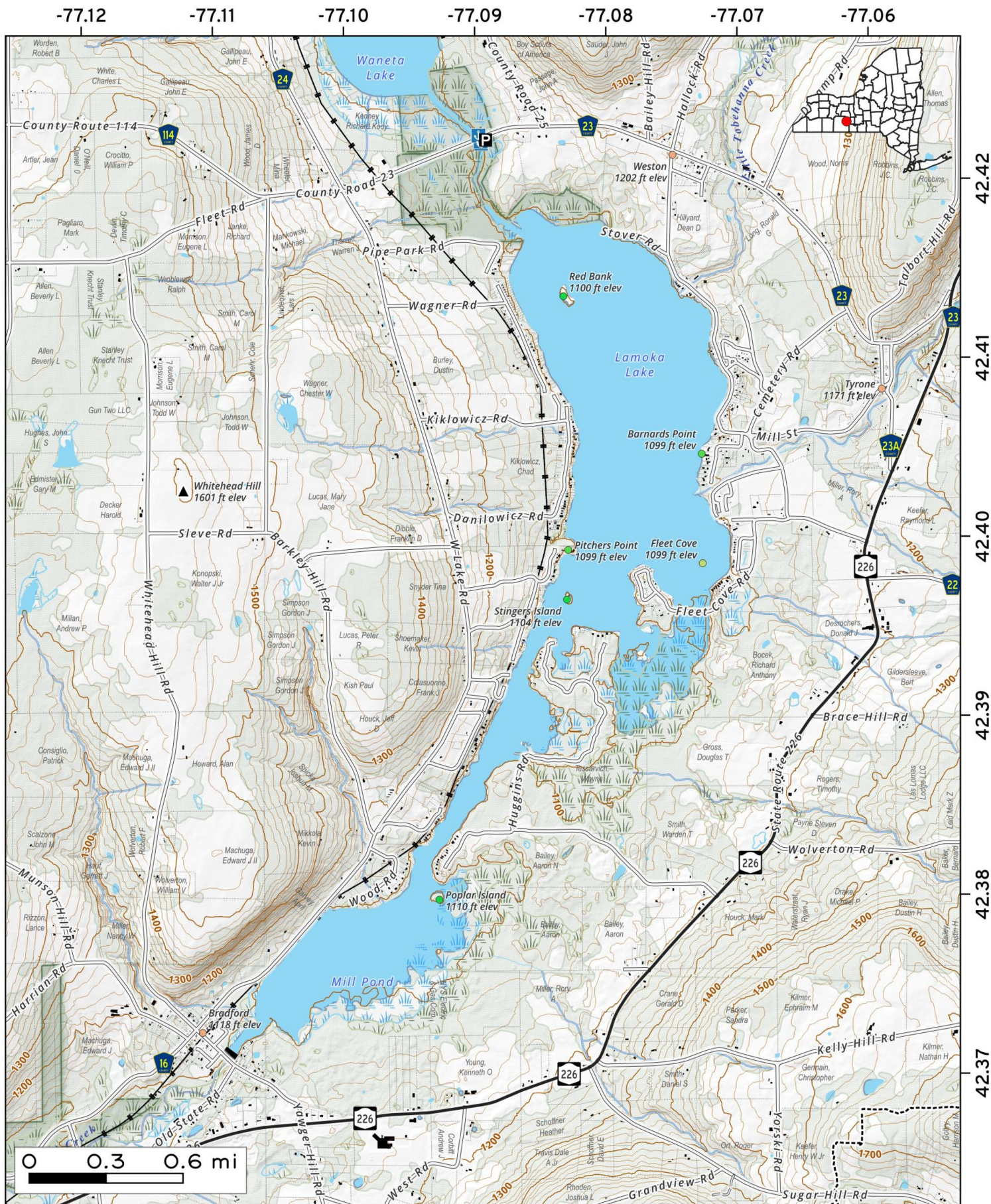


Lamoka Lake. of County Route 23 is a boat launch on the creek between Lamoka and Wakena Lakes. Lamoka, the southern more lake in the chain and heavily developed except for the marshy ends. Wakena Lake.



Map created by Andy Arthur on 6/10/2026 in QGIS 3.44.10-Solothurn. Data: NYS GIS and NYS DEC. More at andyarthur.org



Wakena Lake. Off County Route 23 is a boat launch on the creek between Lamoka and Wakena Lakes. Wakena is developed along much of it's shoreline, especially as you head up towards Wayne. Also tends to be more choppy then Lamoka due to wind blowing off the ridge. Wakena Lake.



Map created by Andy Arthur on 6/10/2026 in QGIS 3.44.10-Solothurn. Data: NYS GIS and NYS DEC. More at andyarthur.org

