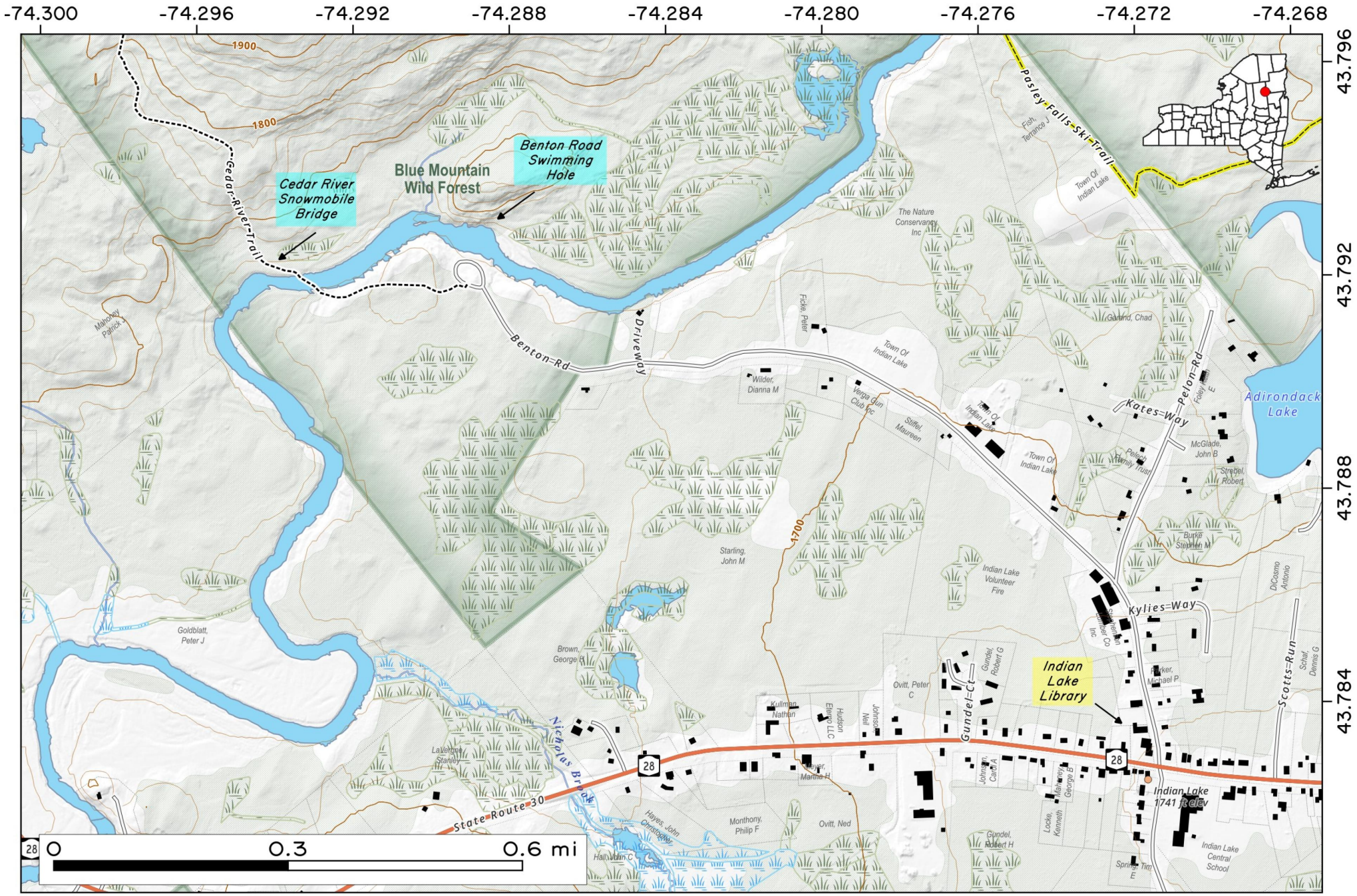


# Benton Road Swimming Hole . Access to the Cedar River via the end of Benton Road and the Cedar River Trail bridge over the Cedar River.

Map created by Andy Arthur on 1/22/2026 in QGIS 3.44.6-Solothurn. Contains NYS GIS and DEC data with additional campsites added by Andy. More maps at [andyarthur.org](http://andyarthur.org).



**Paisley Falls** ski trail is a 1.9 mile loop along the Cedar River, which extends from the Old Indian Lake Garbage Dump to the shoreline of Cedar River, which follows the river before looping back. The trail is almost entirely flat.

Map created by Andy Arthur on 10/23/2025 in QGIS 3.44.3-Solothurn. Contains NYS GIS and DEC data with additional campsites added by Andy. More maps at [andyarthur.org](http://andyarthur.org).

