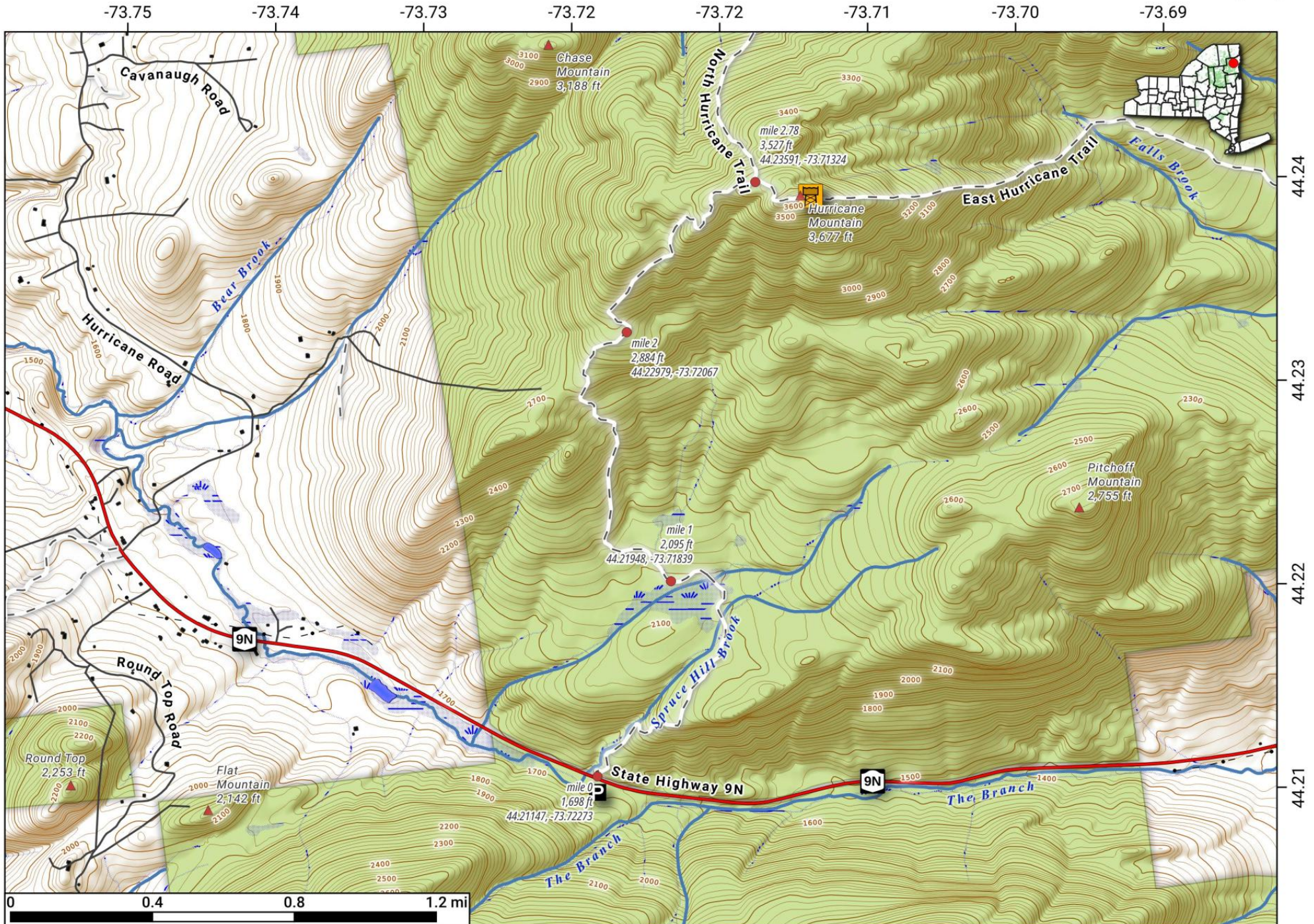


Hurricane Mountain Trail.

Most common route for accessing Hurricane Mountain via NY 9N. Milepoints show distance along the trail.

Map created by Andy Arthur on 10/14/2023 in QGIS 3.32.3-Lima. Contains DEC Trails/Assets, Additional Campsites/Trails by Andy other data ©OpenStreetMap Data, OSM Maintainers. More maps at andyarthur.org.



Soda Range Trail. Roughly 6 mile loop along the Soda Range, passing over Weston Mountain and Lost Pond on the backside of Hurricane Mountain.

Map created by Andy Arthur on 10/14/2023 in QGIS 3.32.3-Lima. Contains DEC Trails/Assets, Additional Campsites/Trails by Andy other data ©OpenStreetMap Data, OSM Maintainers. More maps at andyarthur.org.

