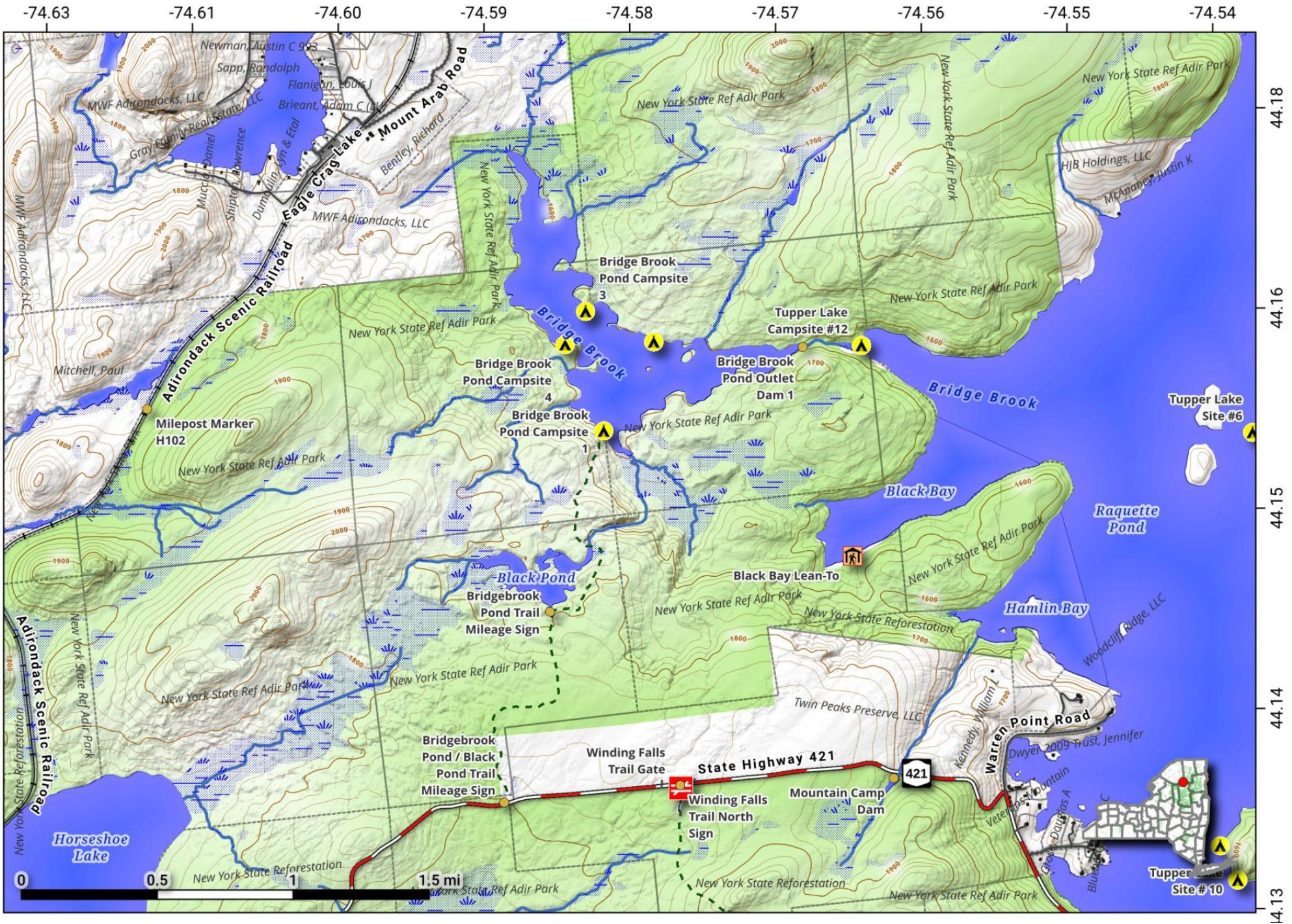


Bridge Brook Pond. The 2 mile trail from NY 421 (Horseshoe Pond Rd takes you north to Bridge Brook Pond, a pond created by damming the Bridge Brook which flows into Tupper Lake.

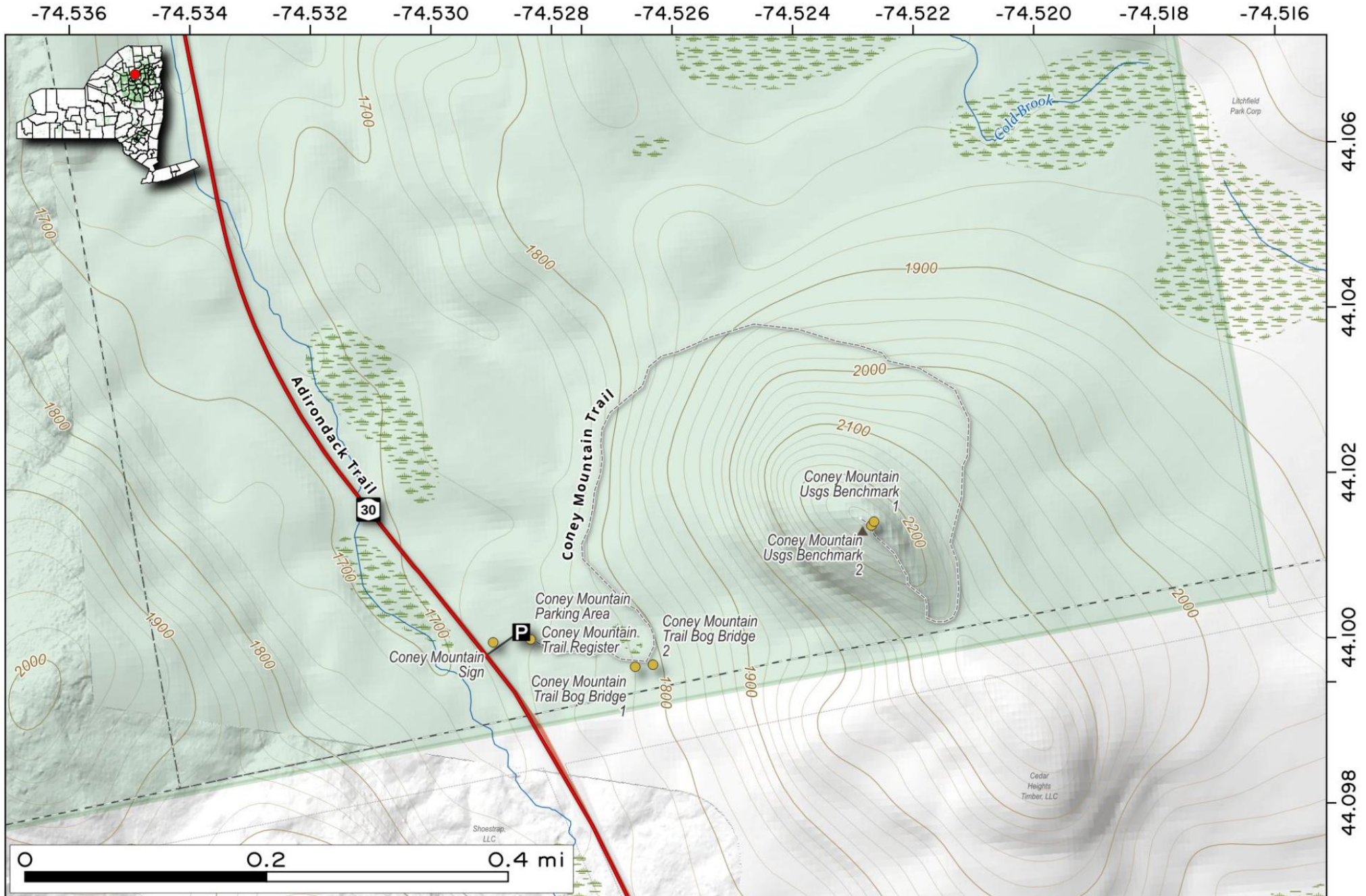


Map created by Andy Arthur on 6/12/2024 in QGIS 3.34.7-Prizren. Contains DEC Trails/Assets, Additional Campsites/Trails by Andy other data ©OpenStreetMap Data, OSM Maintainers.



Coney Mountain Trail . 1.1 mile leg-strecher hike along NY 30 south of Horseshoe and Tupper Lake, that follows a clock-screw around the mountain, and is gentle climb until the last section.

Map created by Andy Arthur on 5/19/2025 in QGIS 3.34.15-Prizren. Contains US Forest Service Base Map, NYS DEC data with additional campsites added by Andy. More maps at andyarthur.org.



Goodman Mountain. Located south of Tupper Lake near the NY 421 turn-off to Horseshoe Lake, it offers views of the Bog Review area, following the original routing of NY 30 to a trail that winds around the mountain to the summit.

Map created by Andy Arthur on 4/15/2025 in QGIS 3.34.15-Prizren. Contains US Forest Service Base Map, NYS DEC data with additional campsites added by Andy. More maps at andyarthur.org.

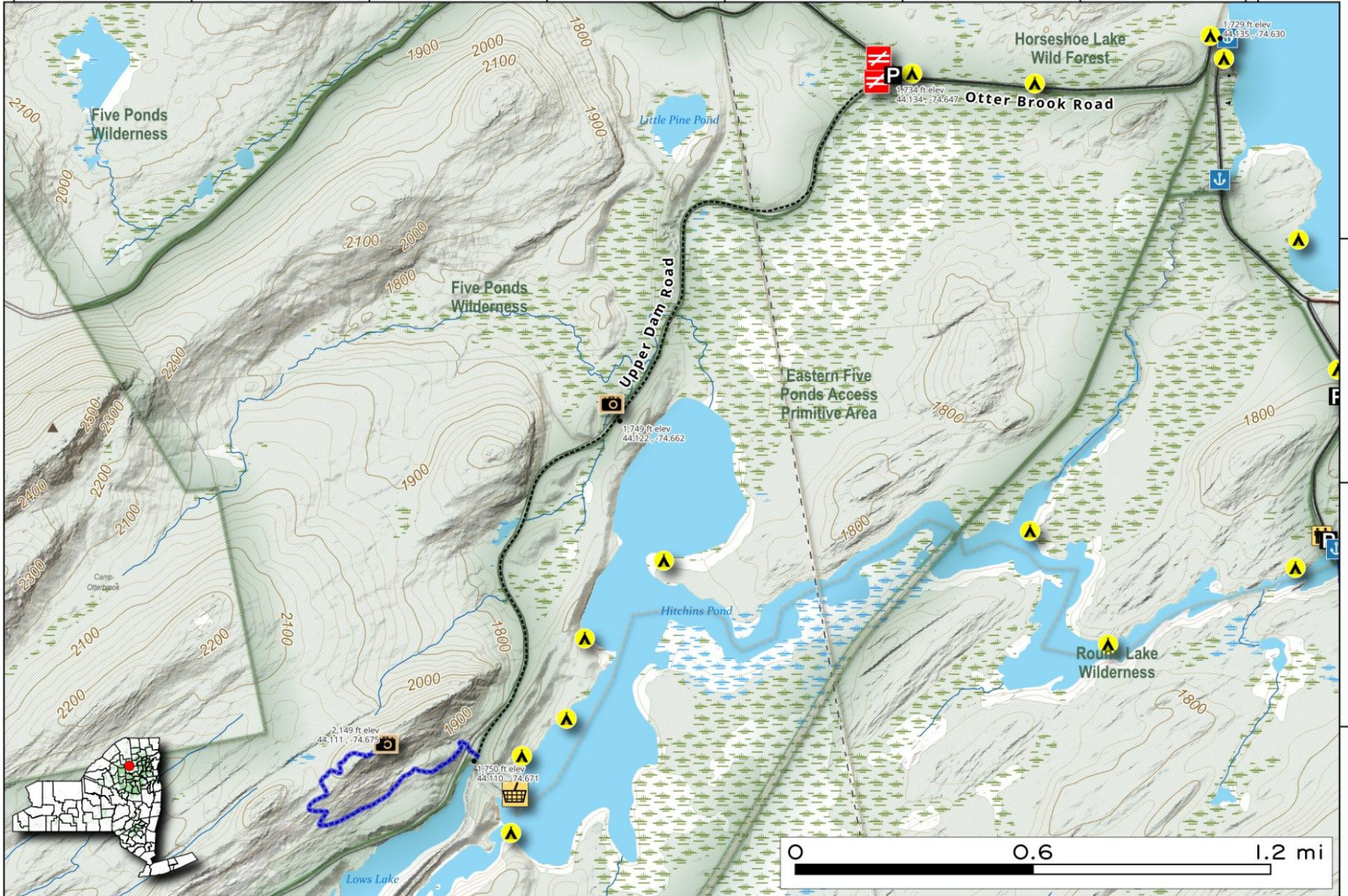


Lows Ledge Trail. There are two ways to get to the Lows Ledge Trail which gives you views of the Tupper Lake up to the High Peaks. You can walk or bike the gated Upper Dam Road 3 1/2 miles from Horseshoe Pond Road or do a 2 mile paddle to the portage between Lows Upper and Lower Lakes. The hike up the ledge is a relatively short half mile.

Map created by Andy Arthur on 9/25/2025 in QGIS 3.44.2-Solothurn. Contains US Forest Service Base Map, NYS DEC data with additional campsites added by Andy. More maps at andyarthur.org.



74.691 -74.682 -74.673 -74.664 -74.655 -74.646 -74.637 -74.628



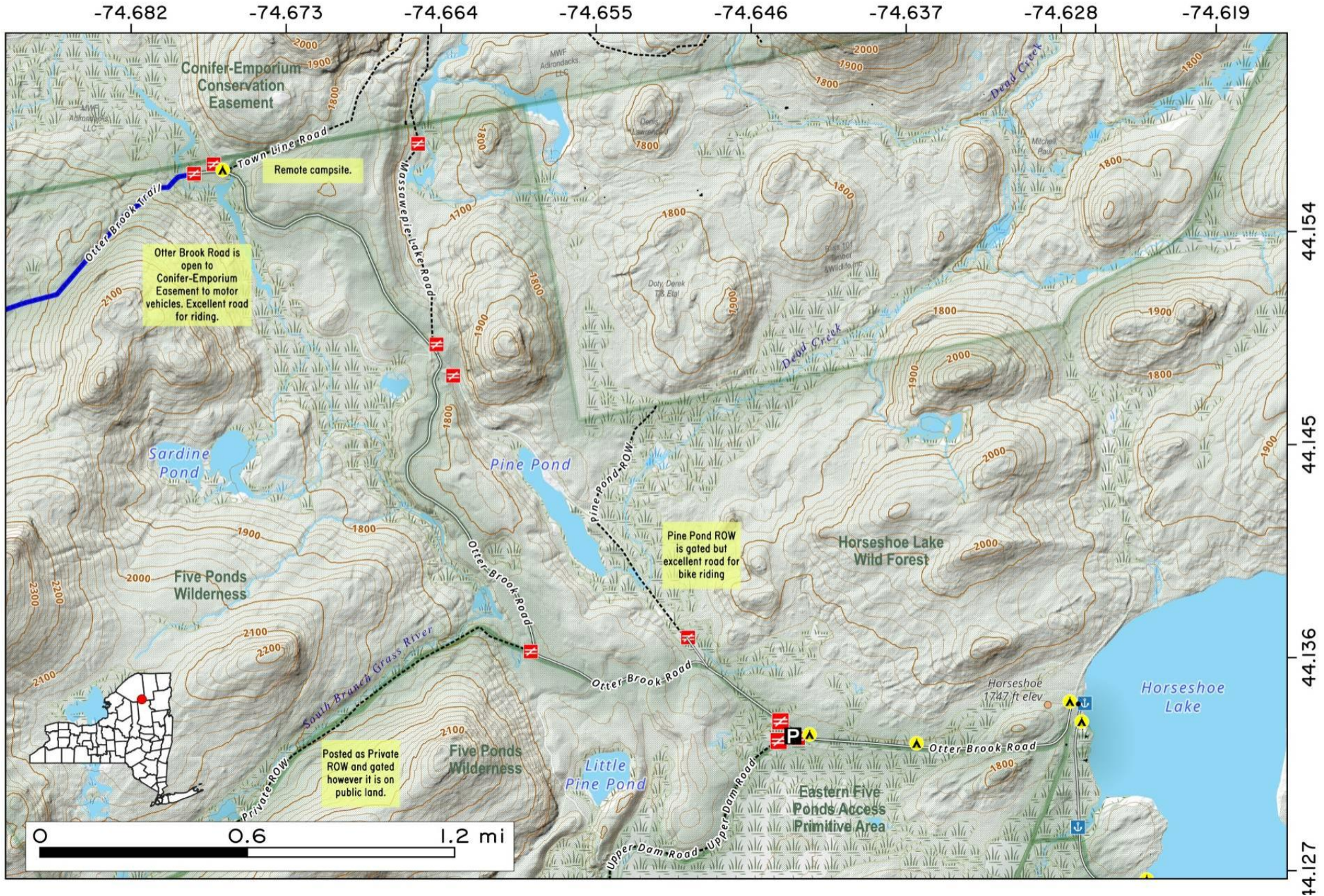
44.127

44.118

44.109

Otter Brook Road (Horseshoe Lake). Horseshoe Lake Road, beyond NY 421 and Horseshoe Lake becomes known as Otter Brook and winds through Horseshoe Wild Forest and Five Ponds Wilderness to several right-of-way roads, providing ample access to back country and a great place to ride mountain and gravel bikes.

Map created by Andy Arthur on 10/20/2025 in QGIS 3.44.3-Solothurn. Contains NYS GIS and DEC data with additional campsites added by Andy. More maps at andyarthur.org.



Winding Falls Trail - Bog River Ski Trail - Bog River Falls. 7 mile loop via Winding Falls Trail, past Winding Falls, along the Bog River Ski Trail, across the Goodman Bridge to Bog River Falls, then back around via NY 421 (Horseshoe Lake Road).

Map created by Andy Arthur on 10/21/2025 in QGIS 3.44.3-Solothurn. Contains NYS GIS and DEC data with additional campsites added by Andy. More maps at andyarthur.org.

