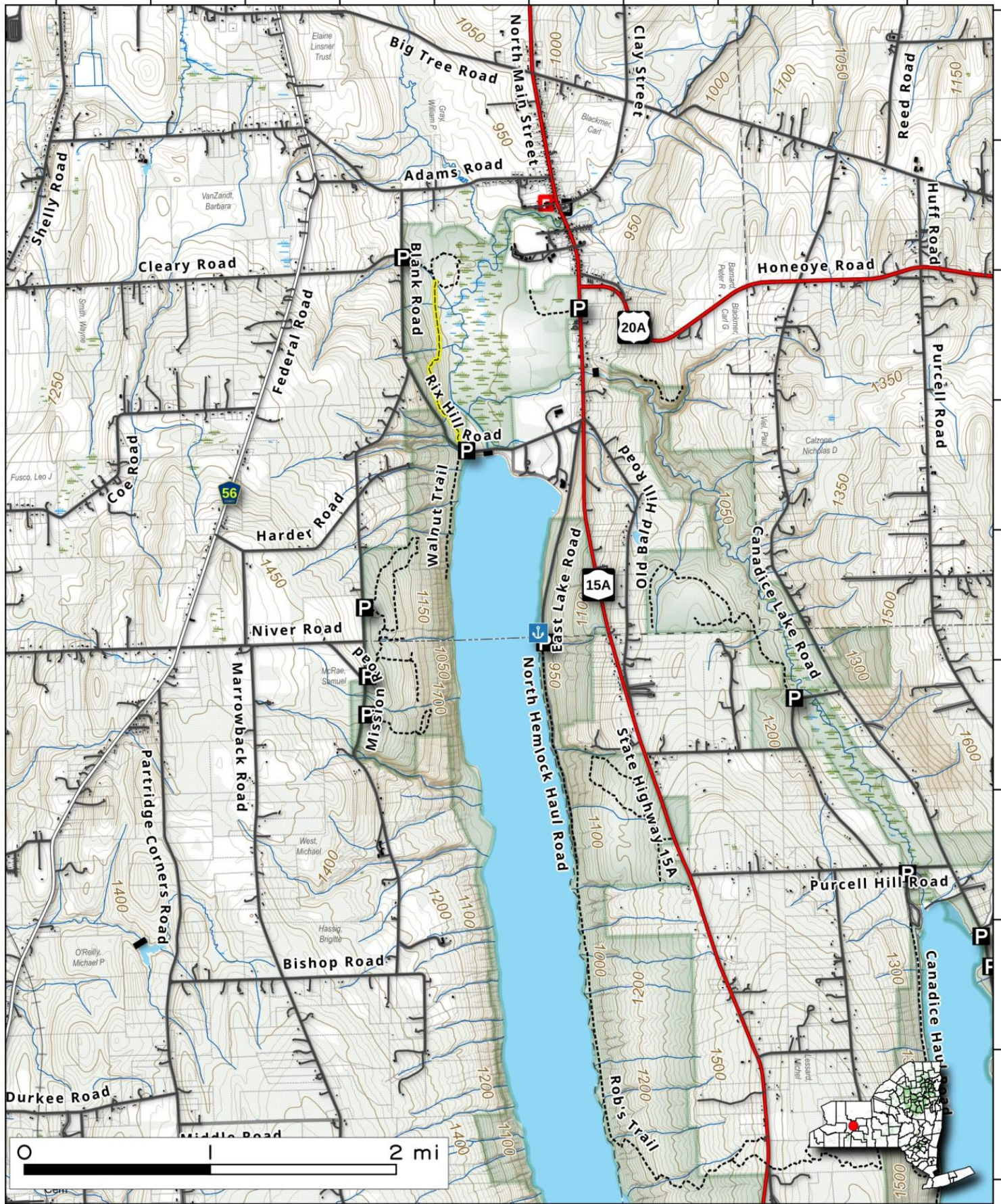


Northern Hemlock Lake offers scenic hiking, fishing, and birdwatching. This 729-acre preserve surrounds a 6-mile-long lake, featuring diverse habitats and wildlife viewing opportunities. Its unique blend of lakeshore and upland forests makes it special, providing a tranquil escape for nature enthusiasts and outdoor lovers.



Map created by Andy Arthur on 7/31/2025 in QGIS 3.44.1-Solothurn. Contains US Forest Service Base Map, NYS DEC data with additional campsites added by Andy. More maps at andyarthur.org.

-77.66 -77.65 -77.64 -77.63 -77.62 -77.61 -77.60 -77.59 -77.58 -77.57



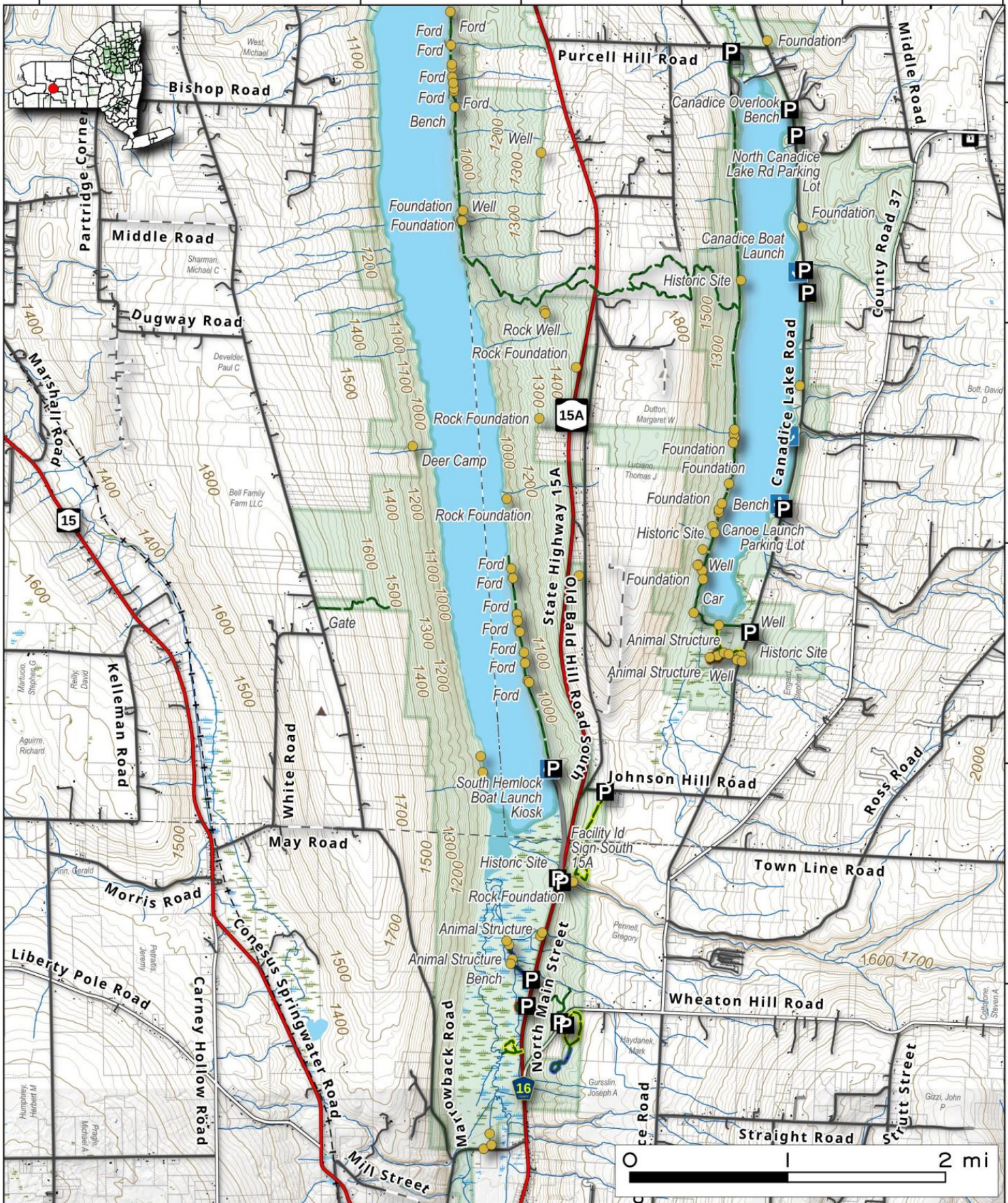
42.81
42.80
42.79
42.78
42.77
42.76
42.75
42.74
42.73
42.72

Hemlock Lake (Southern). Rochester's water supply in Western Finger Lakes. Trails and other access from the southern half of the lake.



Map created by Andy Arthur on 5/6/2025 in QGIS 3.34.15-Prizren. Contains US Forest Service Base Map, NYS DEC data with additional campsites added by Andy. More maps at andyarthur.org.

-77.66 -77.64 -77.62 -77.60 -77.58 -77.56 -77.54



42.74
42.72
42.70
42.68
42.66
42.64

Hemlock and Candice Lake (North) . State lands along the northern portion of Hemlock Lake in Finger Lakes and Candice Hollow.

Map created by Andy Arthur on 5/19/2025 in QGIS 3.34.15-Prizren. Contains US Forest Service Base Map, NYS DEC data with additional campsites added by Andy. More maps at andyarthur.org.

