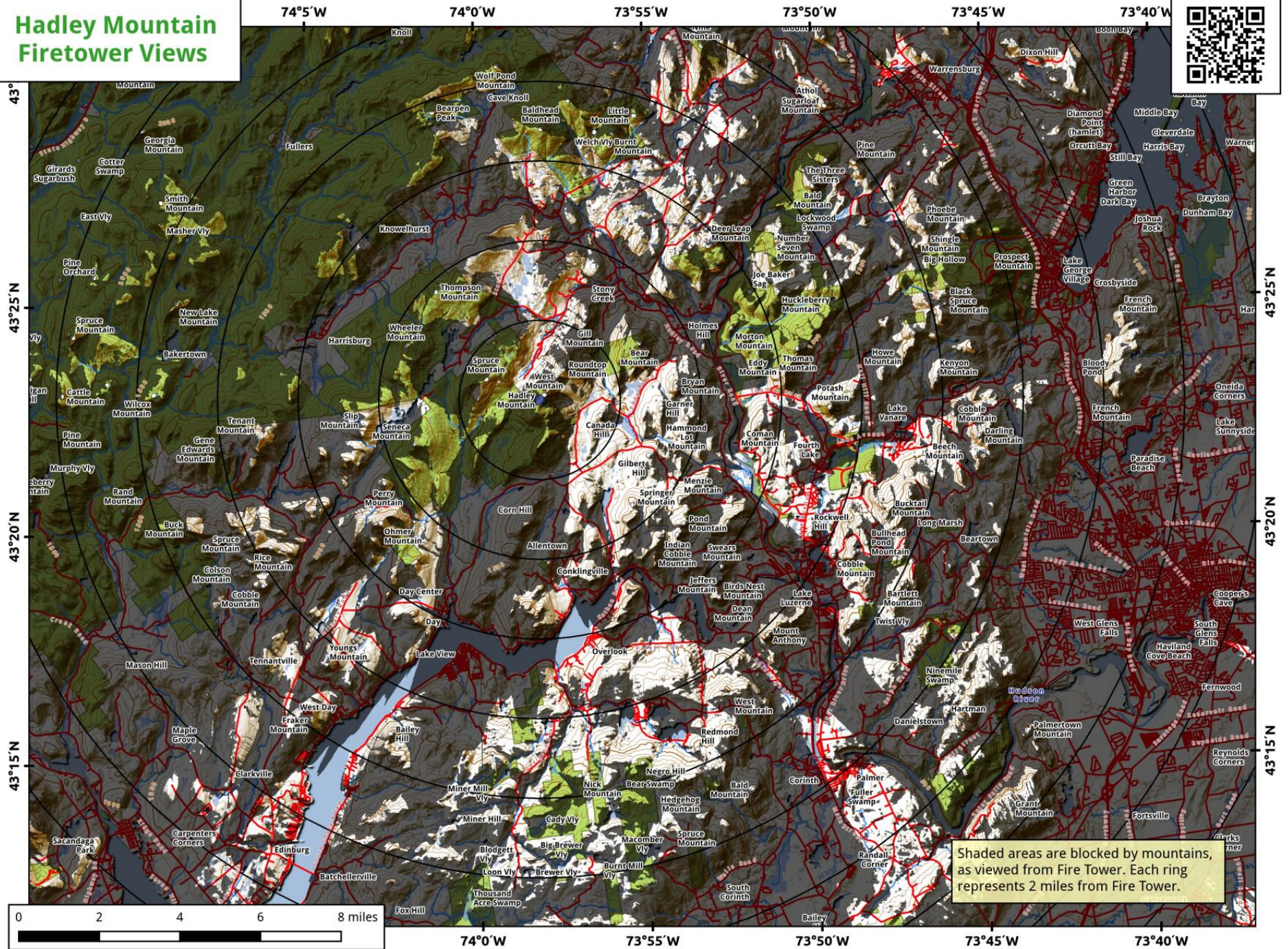


Hadley Mountain Firetower Views



The Hadley Mountain Firetower hike is a popular 3.5-mile round-trip trek in the southern Adirondacks. The trail climbs steeply over exposed bedrock, gaining 1,525 feet. At the summit, a restored steel tower provides views of Great Sacandaga Lake, the high peaks, and Vermont..



Map created by Andy Arthur on 1/13/2026 in QGIS 3.44.6-Solothurn. Contains NYS GIS and DEC data with additional campsites added by Andy. More maps at andyarthur.org.

-73.980 -73.970 -73.960 -73.950 -73.940 -73.930 -73.920 -73.910

