

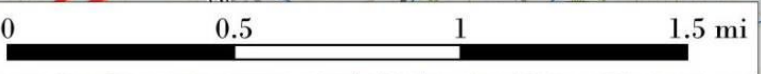
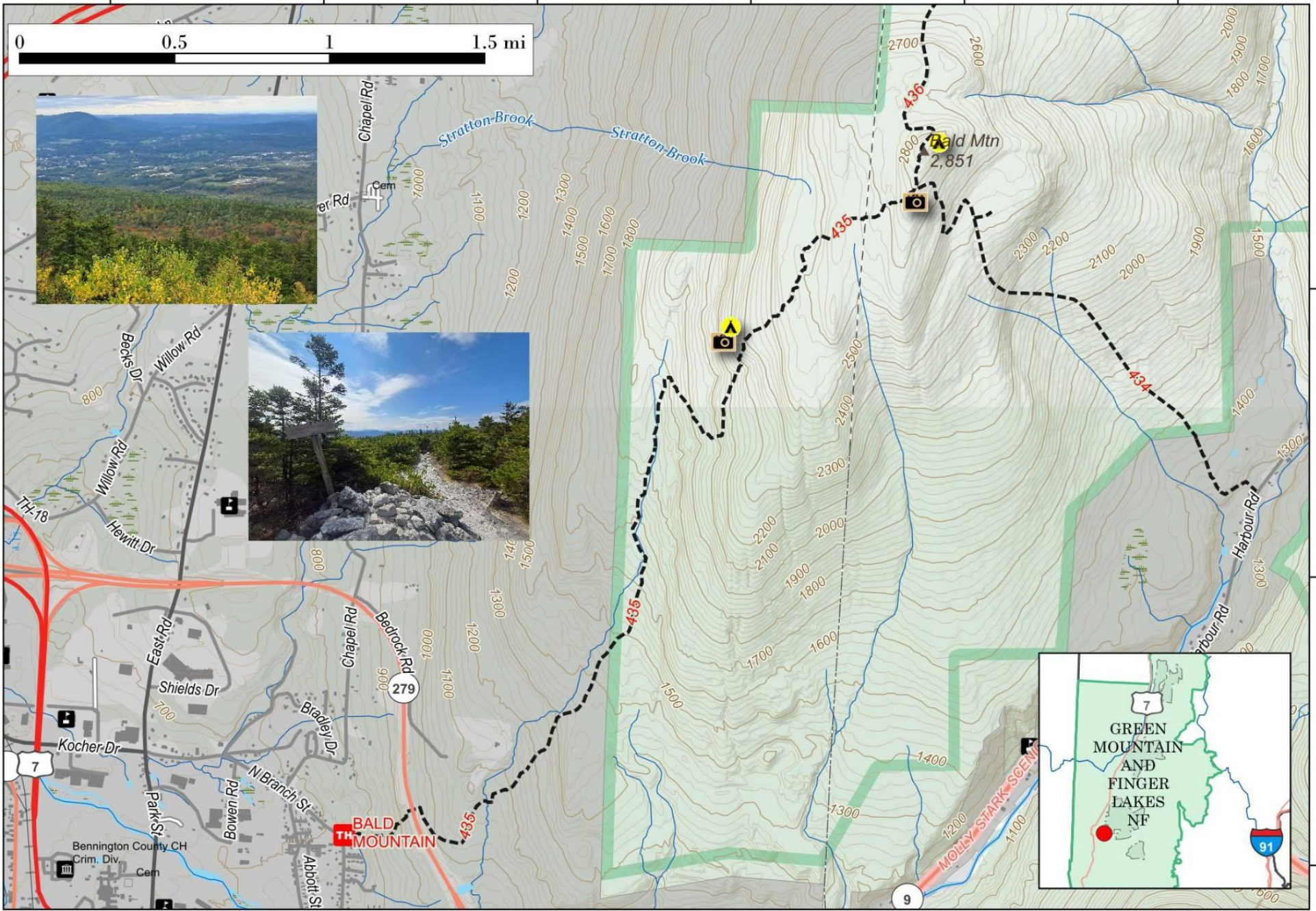
Bald Mountain.

2 1/2 mile hike to first summit overlooking Bennington, and a 4 mile hike to the Bald Mountain summit with views looking south towards Massachusetts. Despite the name, the summit is not fully bald, most views are to the east and south from the top.



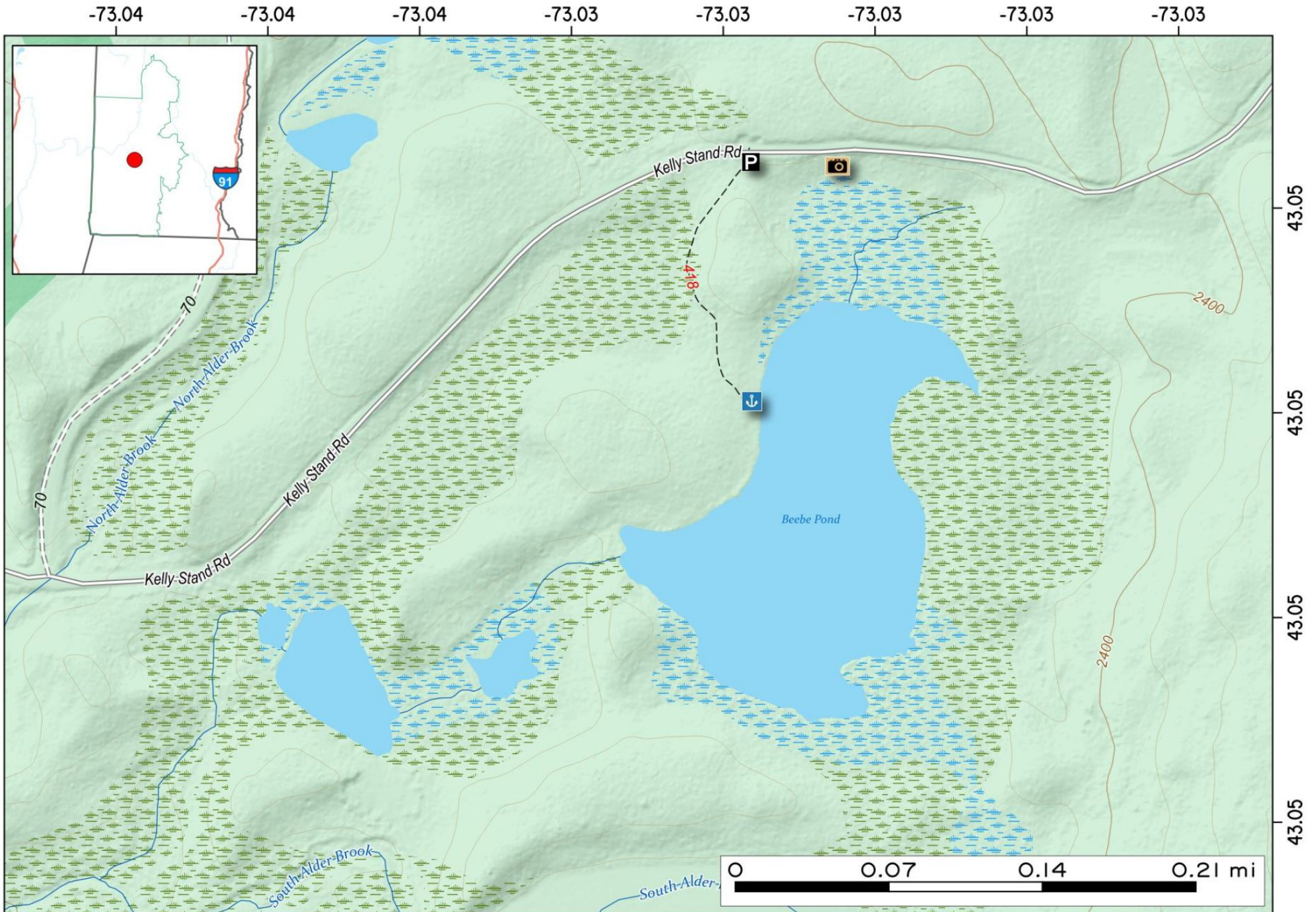
Map created by Andy Arthur on 10/23/2024 in QGIS 3.34.11-Prizren. Contains US Forest Service Base Map and DEC data. More maps at andyarthur.org.

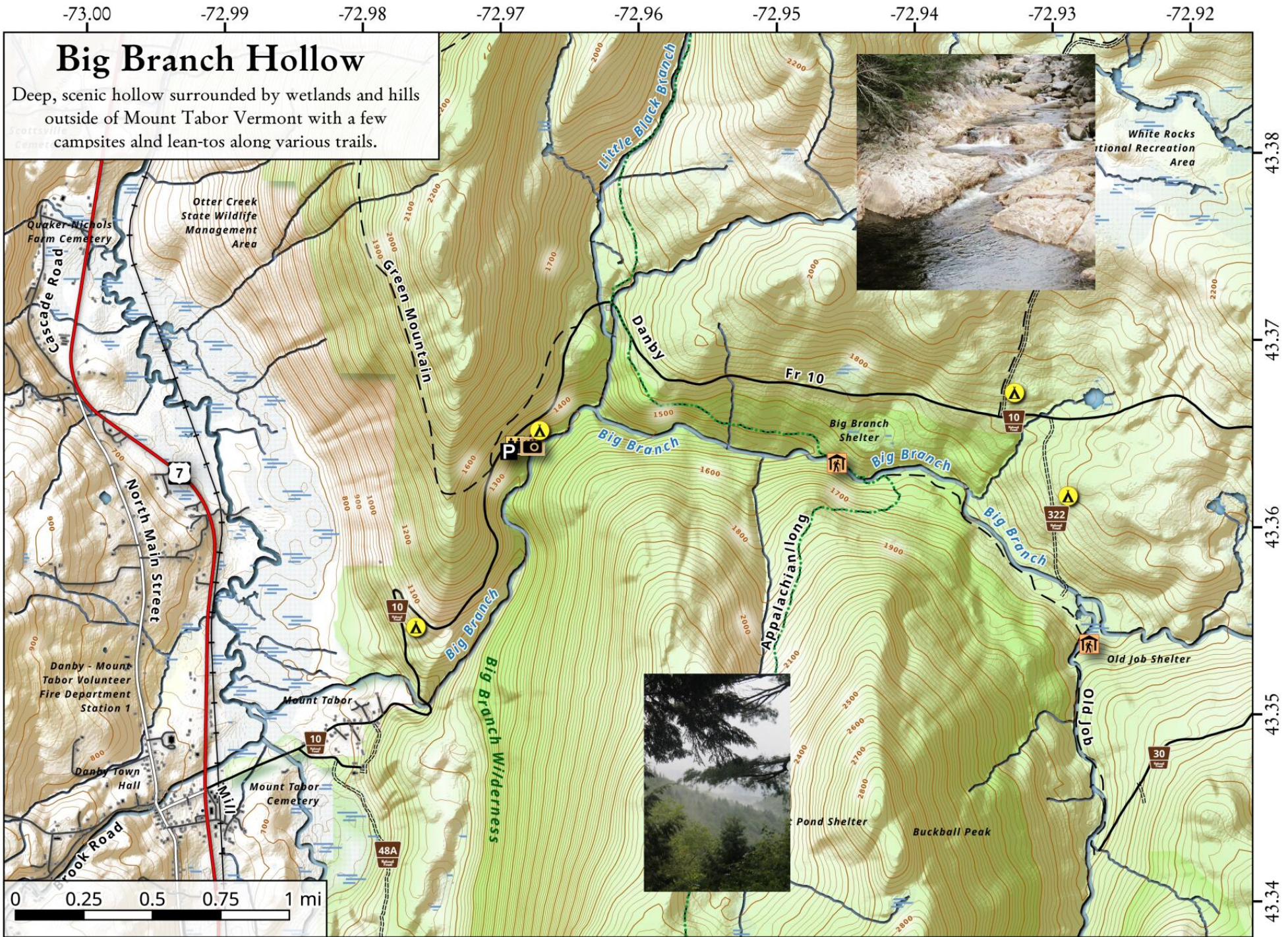
-73.20 -73.18 -73.17 -73.15 -73.14 -73.13



Beebe Pond. Scenic pond along Kelley Stand Road about 5 miles east of Grout Pond.

Map created by Andy Arthur on 3/7/2025 in QGIS 3.34.14-Prizren. Contains US Forest Service Base Map, NYS DEC data with additional campsites added by Andy. More maps at andyarthur.org.



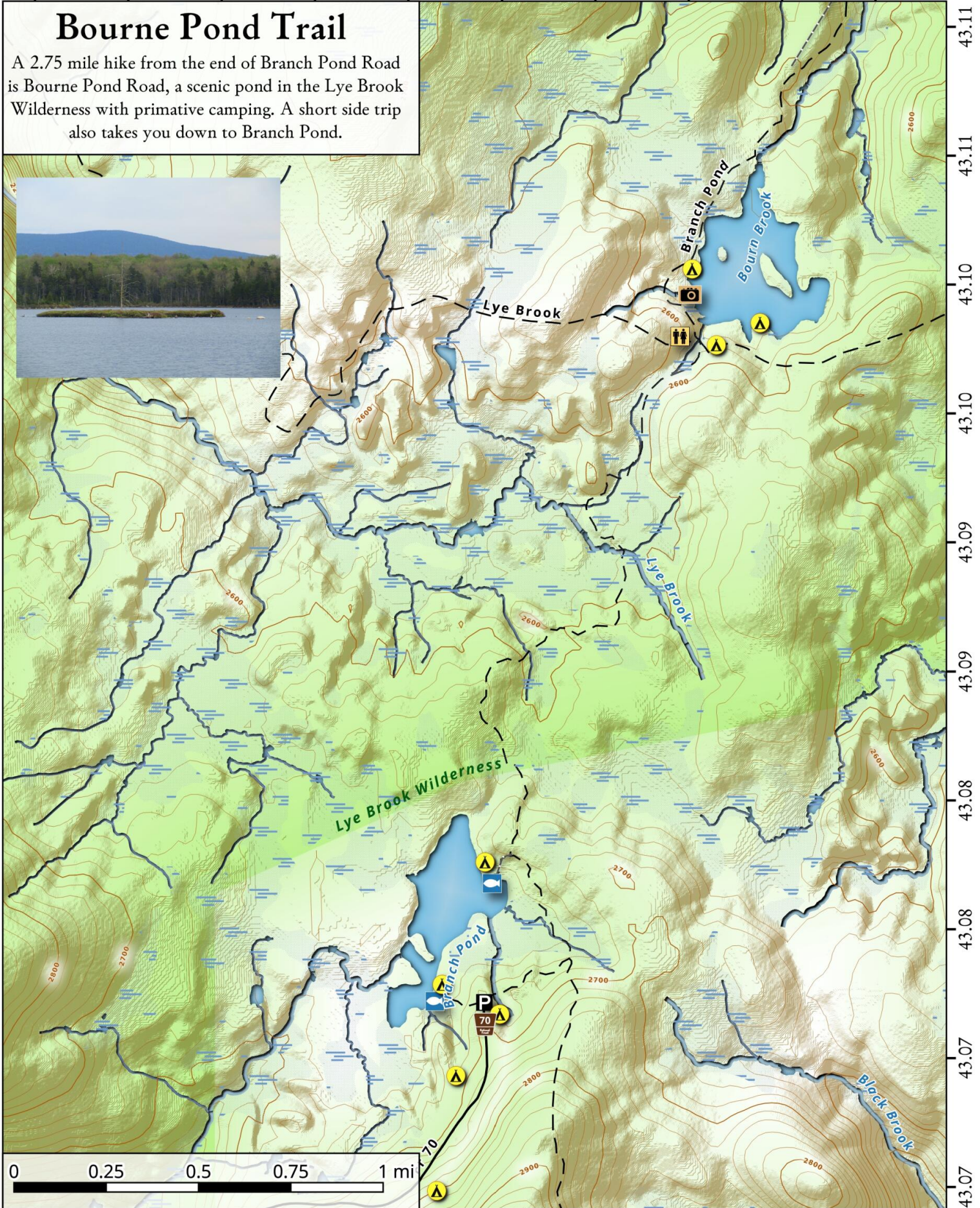


Updated: October 29, 2020 by AndyArthur.org in QGIS 3.16.0-Hannover and Python. Street Map is Copyright © OpenStreetMap contributors, CC BY-SA. USFS Data is from VT GIS. Projection: NAD83 / UTM zone 18N. (WGS84). Contours are 20 feet.

-73.04 -73.04 -73.03 -73.03 -73.02 -73.02 -73.01 -73.01 -73.00 -73.00

Bourne Pond Trail

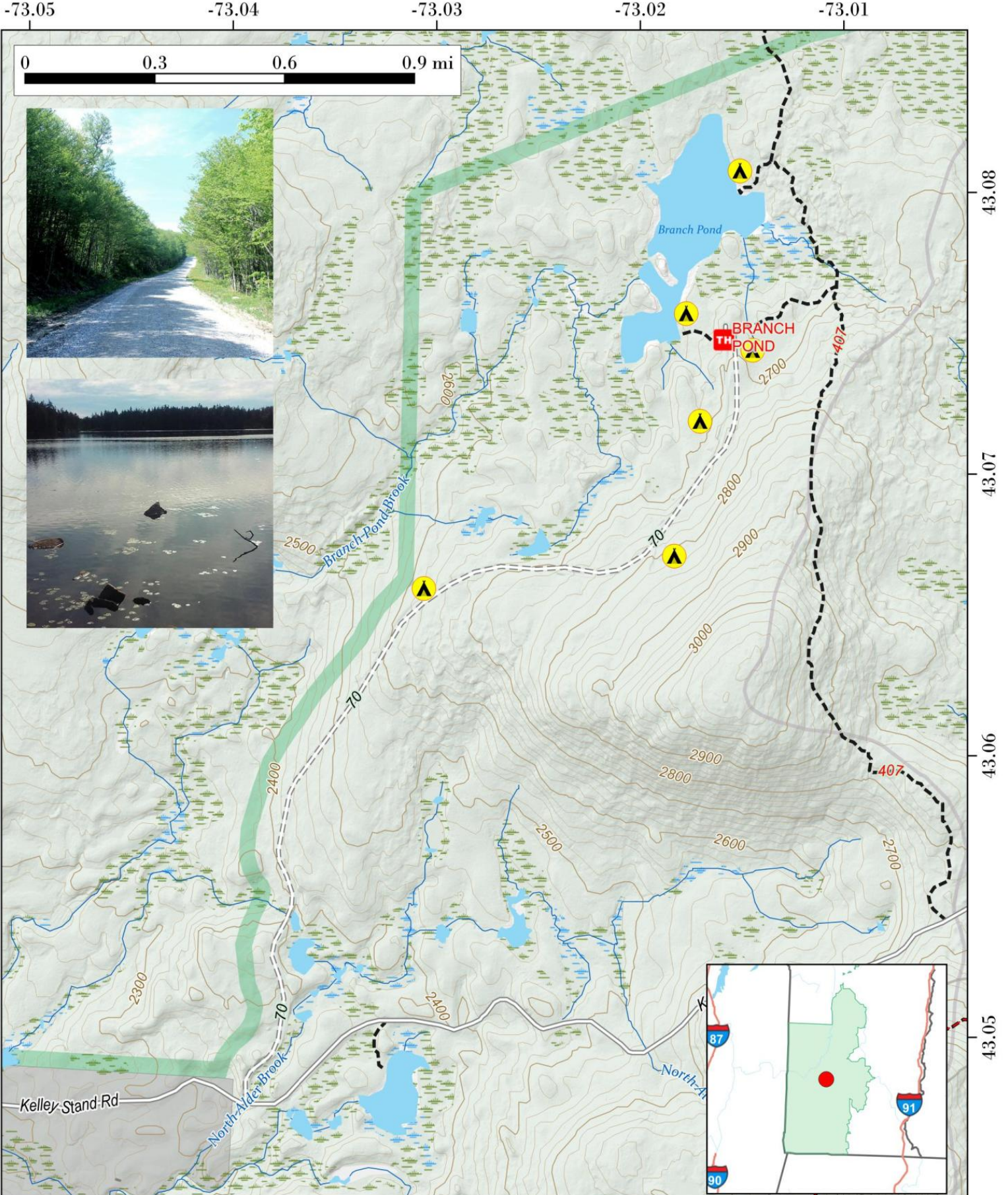
A 2.75 mile hike from the end of Branch Pond Road is Bourne Pond Road, a scenic pond in the Lye Brook Wilderness with primitive camping. A short side trip also takes you down to Branch Pond.

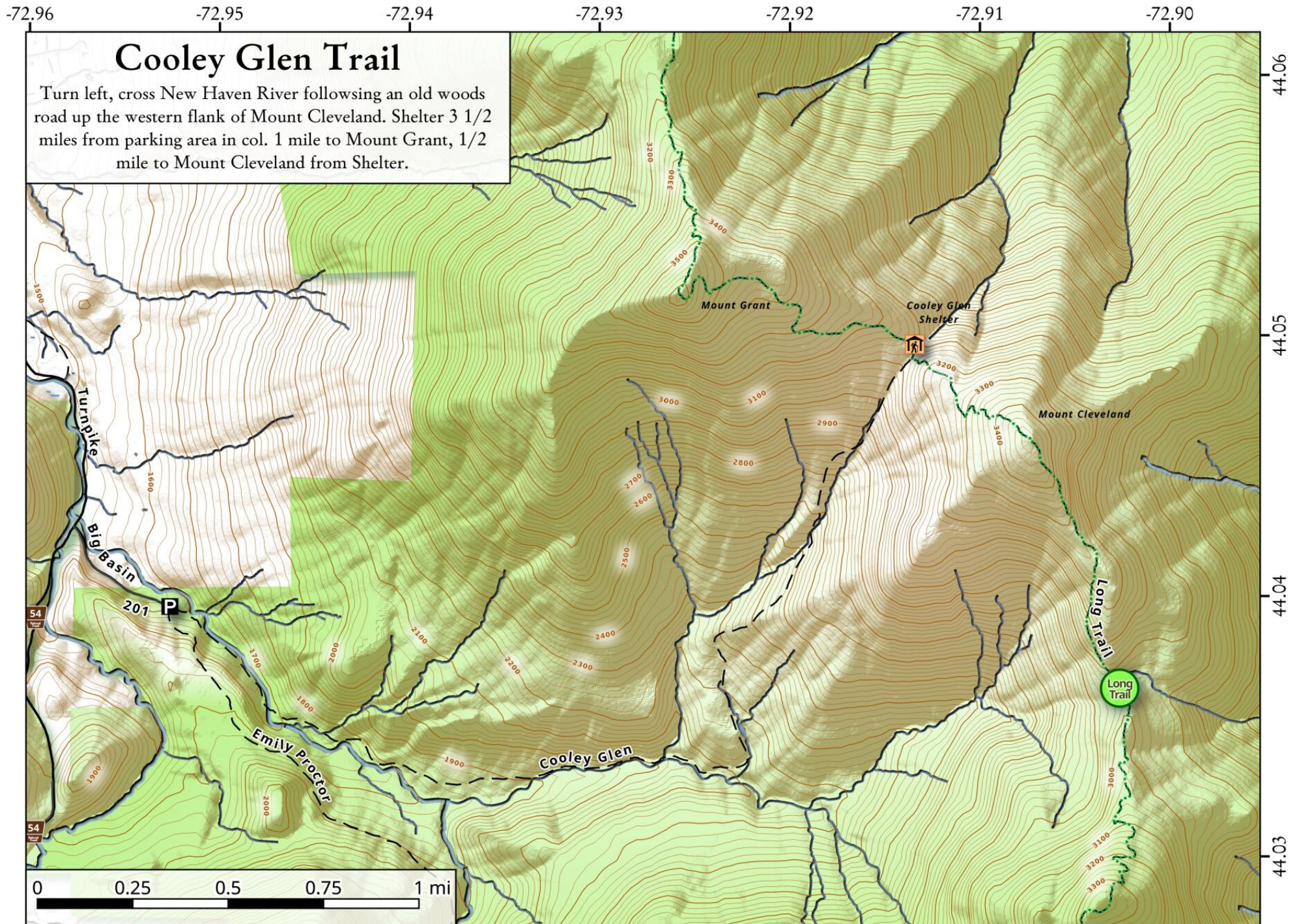


Branch Pond Campsites.

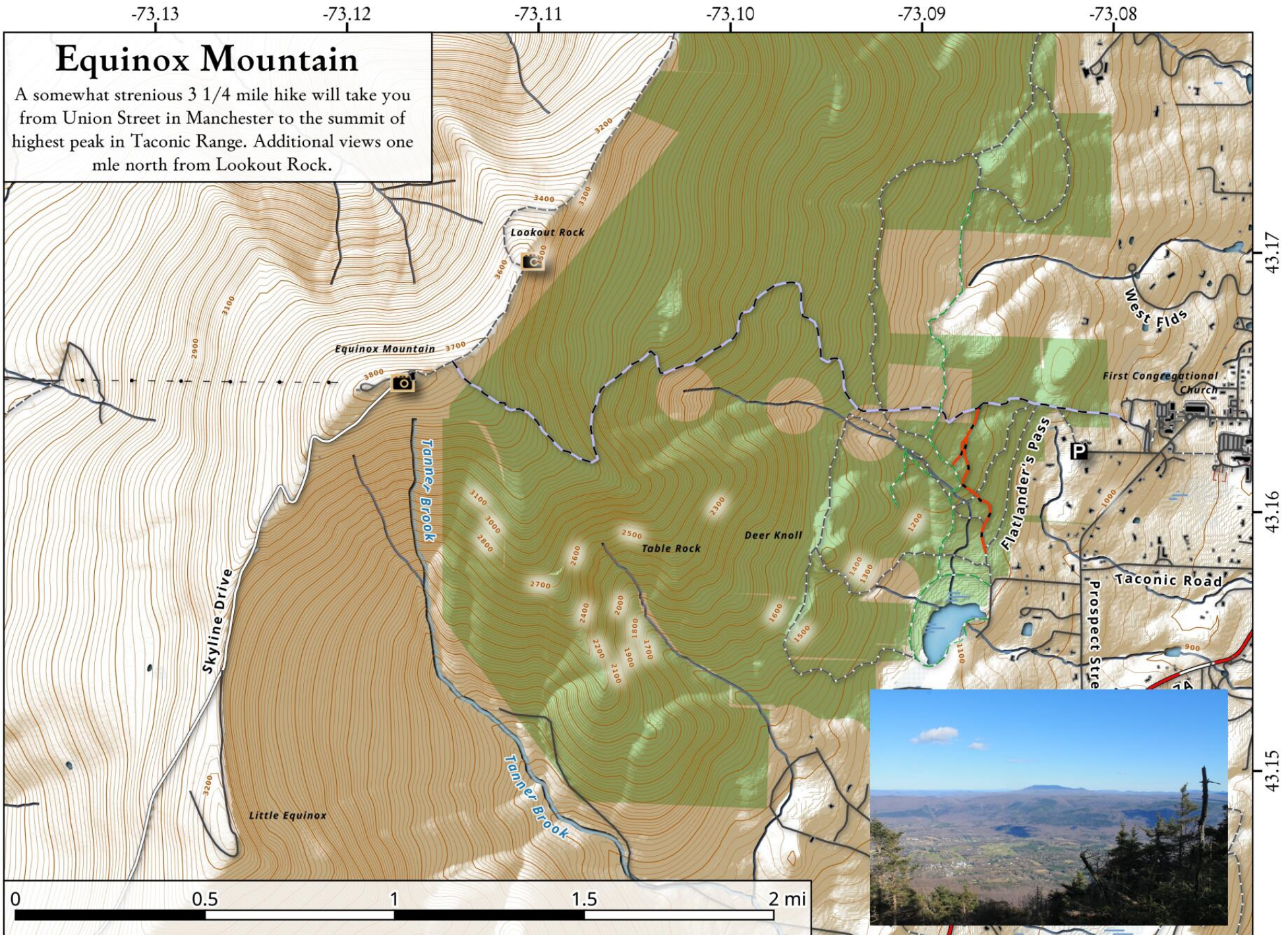
Informal roadside campsites near Kelley Stand and Branch Pond, along with sites along the lake that are a short walk-in.

Map created by Andy Arthur on 10/23/2024 in QGIS 3.34.11-Prizren. Contains US Forest Service Base Map with campsites added by Andy. More maps at andyarthur.org.





Updated: November 1, 2020 by AndyArthur.org in QGIS 3.16.0-Hannover and Python. Street Map is Copyright © OpenStreetMap contributors, CC BY-SA. USFS Data is from VT GIS. Projection: NAD83 / UTM zone 18N. (WGS84). Contours are 20 feet.



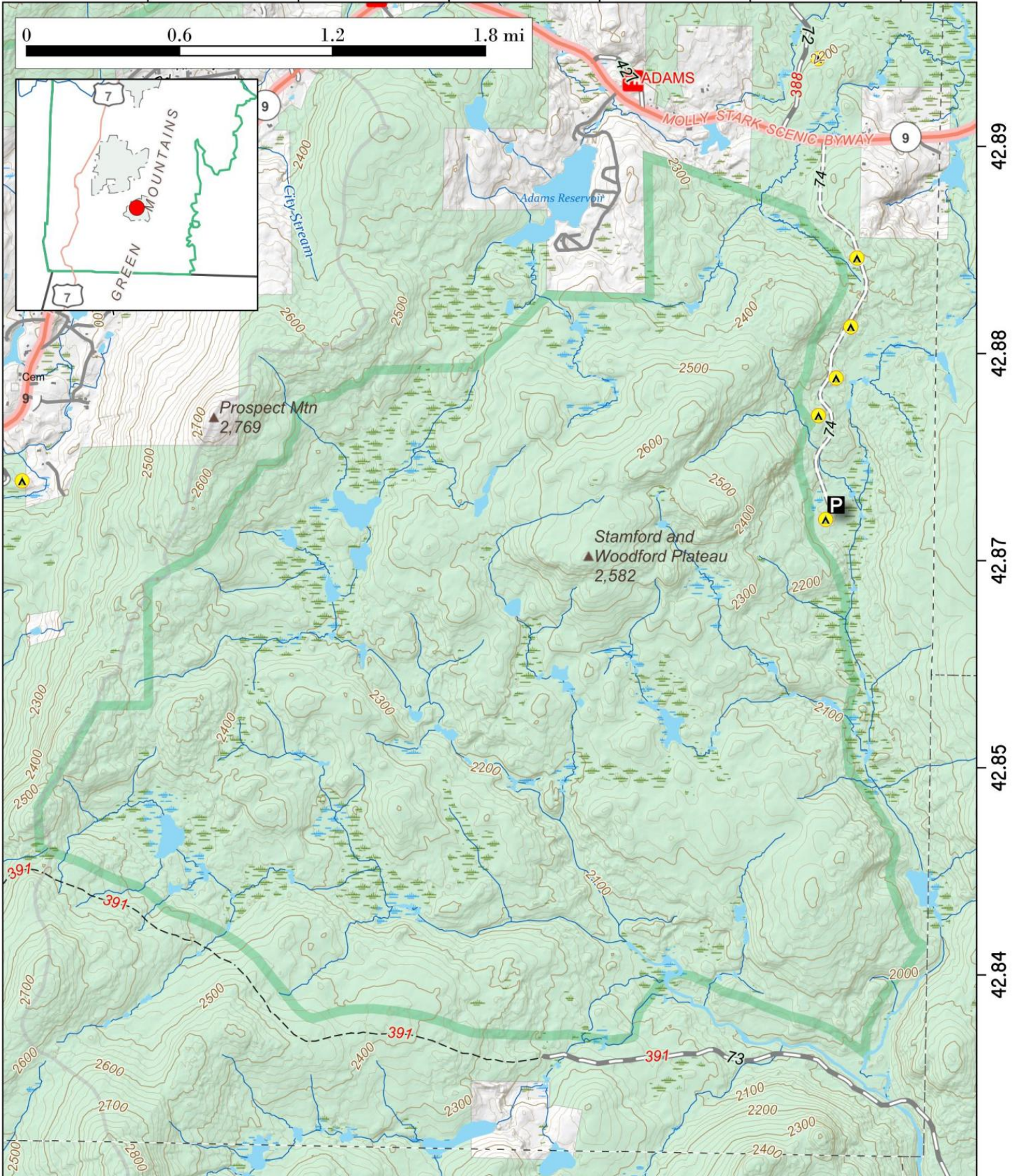
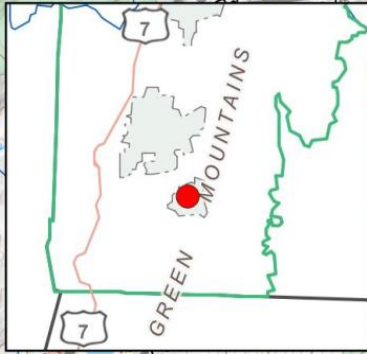
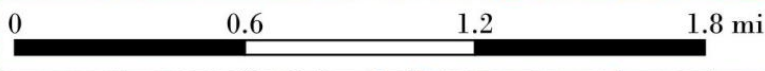
Updated: October 30, 2020 by AndyArthur.org in QGIS 3.16.0-Hannover and Python. Street Map is Copyright © OpenStreetMap contributors, CC BY-SA. USFS Data is from VT GIS. Projection: NAD83 / UTM zone 18N. (WGS84). Contours are 20 feet.

George Aiken Wilderness. 5,700 acre trail-less area on the Woodford Plateau outside of Bennington. Known for its ponds and wetland, access is via George Aiken Wilderness Road (FR 74). Roadside campsites along FR 74.

Map created by Andy Arthur on 3/7/2025 in QGIS 3.34.14-Prizren. Contains US Forest Service Base Map, NYS DEC data with additional campsites added by Andy. More maps at andyarthur.org.



-73.07 -73.06 -73.05 -73.04 -73.02 -73.01

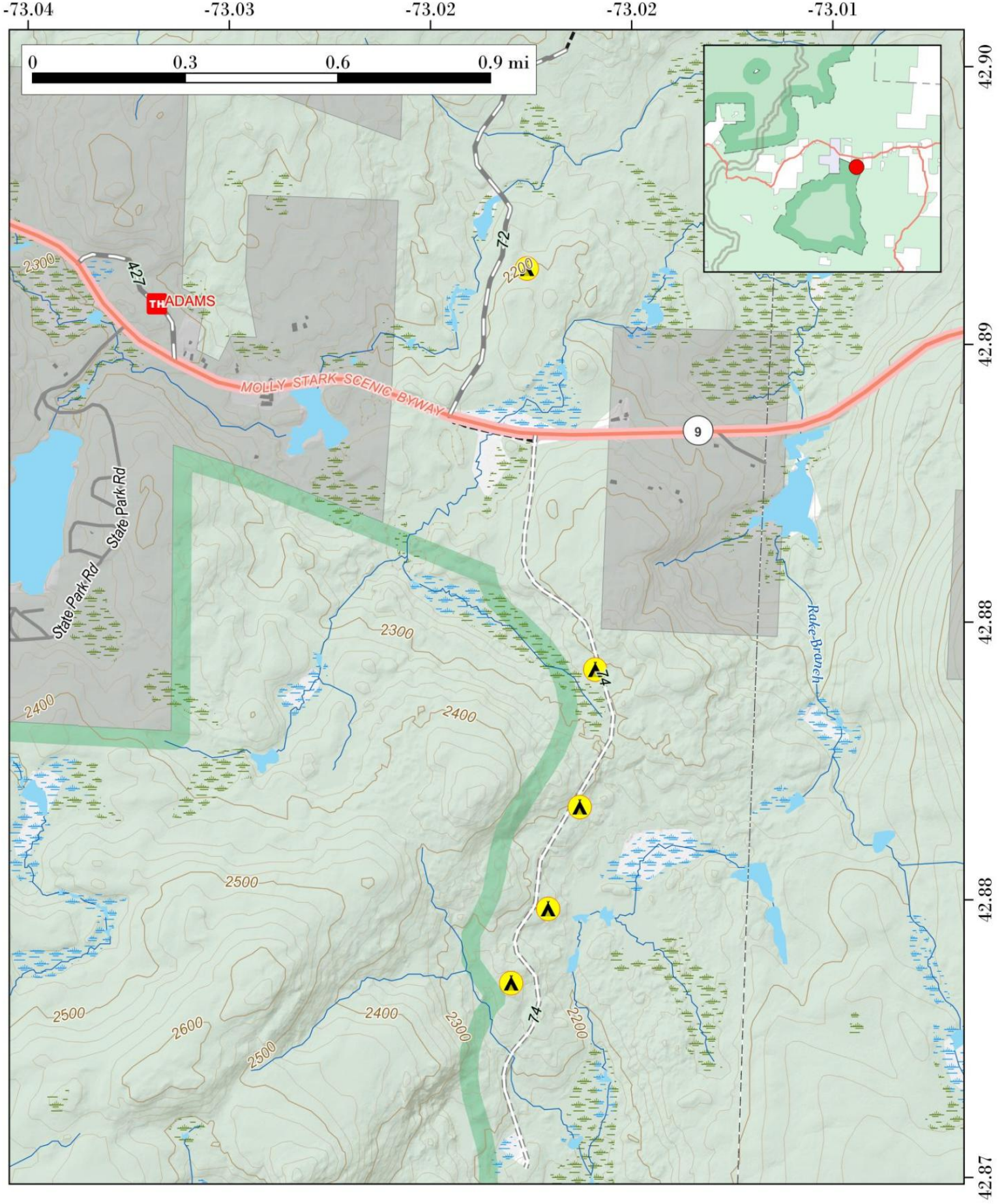


42.89
42.88
42.87
42.85
42.84

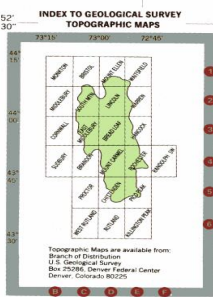
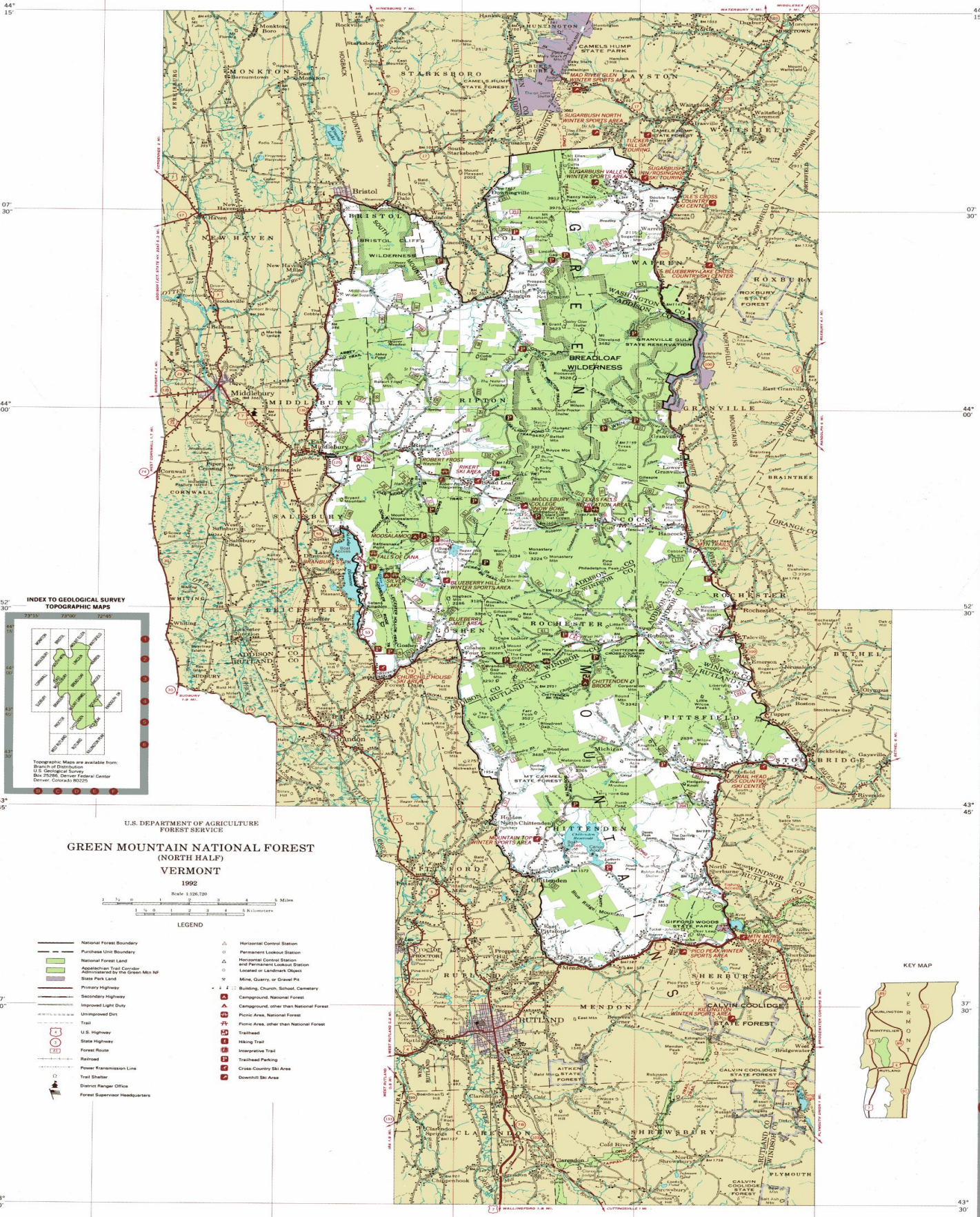
Forest Road 72 & 74 Camping.

Dispersed campsites along Forest Road 72 and 74 (George Aikens Wilderness Road) off the Molly Stark Byway (VT 9) in Vermont.

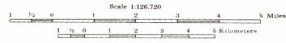
Map created by Andy Arthur on 10/29/2024 in QGIS 3.34.11-Prizren. Contains US Forest Service Base Map with additional campsites added by Andy. More maps at andyarthur.org.



73°15' 07°30' 73°00' 52°30' 72°45'



U.S. DEPARTMENT OF AGRICULTURE
FOREST SERVICE
**GREEN MOUNTAIN NATIONAL FOREST
(NORTH HALF)**
VERMONT
1992



LEGEND

- National Forest Boundary
- Purchase Limit Boundary
- National Forest Land
- ▨ Appalachian Trail Corridor (Administered by the Green Mt. NF)
- State Park Land
- Primary Highway
- Secondary Highway
- Improved Light Duty
- Unimproved Dirt
- Trail
- U.S. Highway
- State Highway
- Forest Route
- Railroad
- Power Transmission Line
- Trail Station
- District Ranger Office
- Forest Supervisor Headquarters
- △ Horizontal Control Station
- △ Permanent Lookout Station
- △ Horizontal Control Station and Permanent Lookout Station
- Located or Landmark Object
- Mine, Quarry, or Gravel Pit
- Building, Church, School, Cemetery
- △ Campground, National Forest
- △ Campground, other than National Forest
- △ Picnic Area, National Forest
- △ Picnic Area, other than National Forest
- Trailhead
- Hiking Trail
- Interpretive Trail
- Trailhead Parking
- Cross-Country Ski Area
- Downhill Ski Area



FOREST SERVICE
Compiled as the Regional Office, Milwaukee, Wisconsin, 1974 from
U.S. Geological Survey quadrangles. Revised in 1992 by the USDA
Forest Service, Geospatial Services Center, Salt Lake City, Utah,
from 1991 correction guides.

07°30' 73°00' 52°30' 72°45' Longitude west from Greenwich

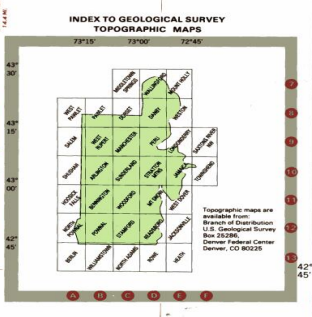
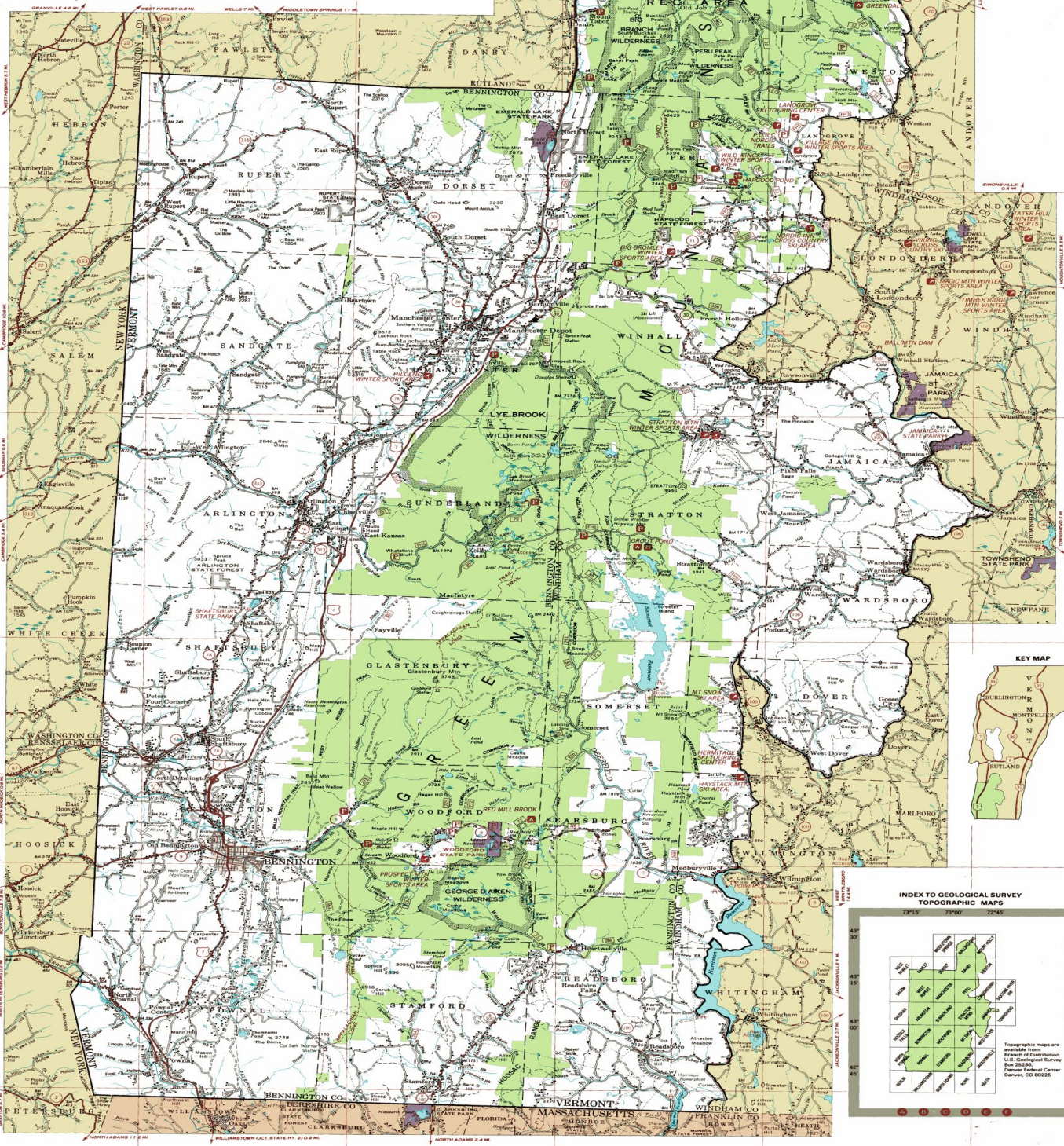
1927 North American datum

U.S. DEPARTMENT OF AGRICULTURE
FOREST SERVICE
GREEN MOUNTAIN NATIONAL FOREST
VERMONT
1992



LEGEND

	National Forest Boundary		Horizontal Control Station
	Purchase Line Boundary		Permanent Lookout Station
	National Forest Land		Historical Control Station and Permanent Lookout Station
	Appalachian Trail Corridor		Labeled or Unlabeled Clearing
	State Park Land		Mine, Quarry, or Gravel Pit
	Primary Highway		Building, Church, School, Cemetery
	Secondary Highway		Campground, National Forest
	Improved Light Duty		Campground, other than National Forest
	Unimproved Dirt		Picnic Area, National Forest
	Trail		Picnic Area, other than National Forest
	U.S. Highway		Trailhead
	State Highway		Hiking Trail
	Forest Route		Interpretive Trail
	Railroad		Trailhead Parking
	Power Transmission Line		Winter Trail Parking
	Trail Shelter		Cross Country Ski Area
	District Ranger Office		Downhill Ski Area
	Forest Supervisor Headquarters		



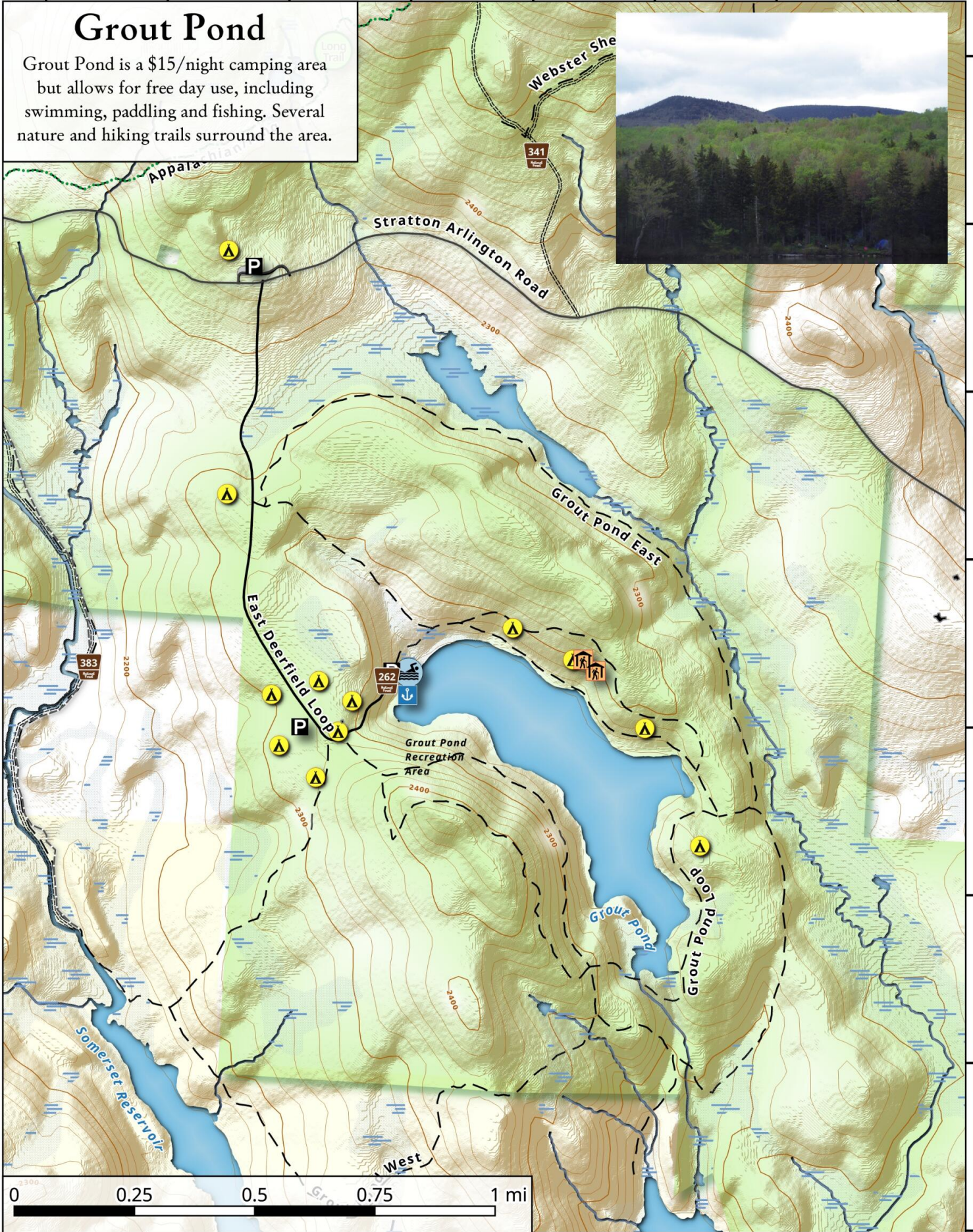
-72.97 -72.96 -72.96 -72.95 -72.95 -72.94 -72.94 -72.93

Grout Pond

Grout Pond is a \$15/night camping area but allows for free day use, including swimming, paddling and fishing. Several nature and hiking trails surround the area.



43.06
43.06
43.05
43.05
43.04
43.04
43.03
43.03

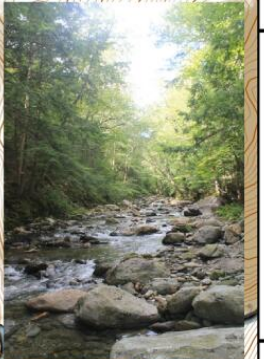
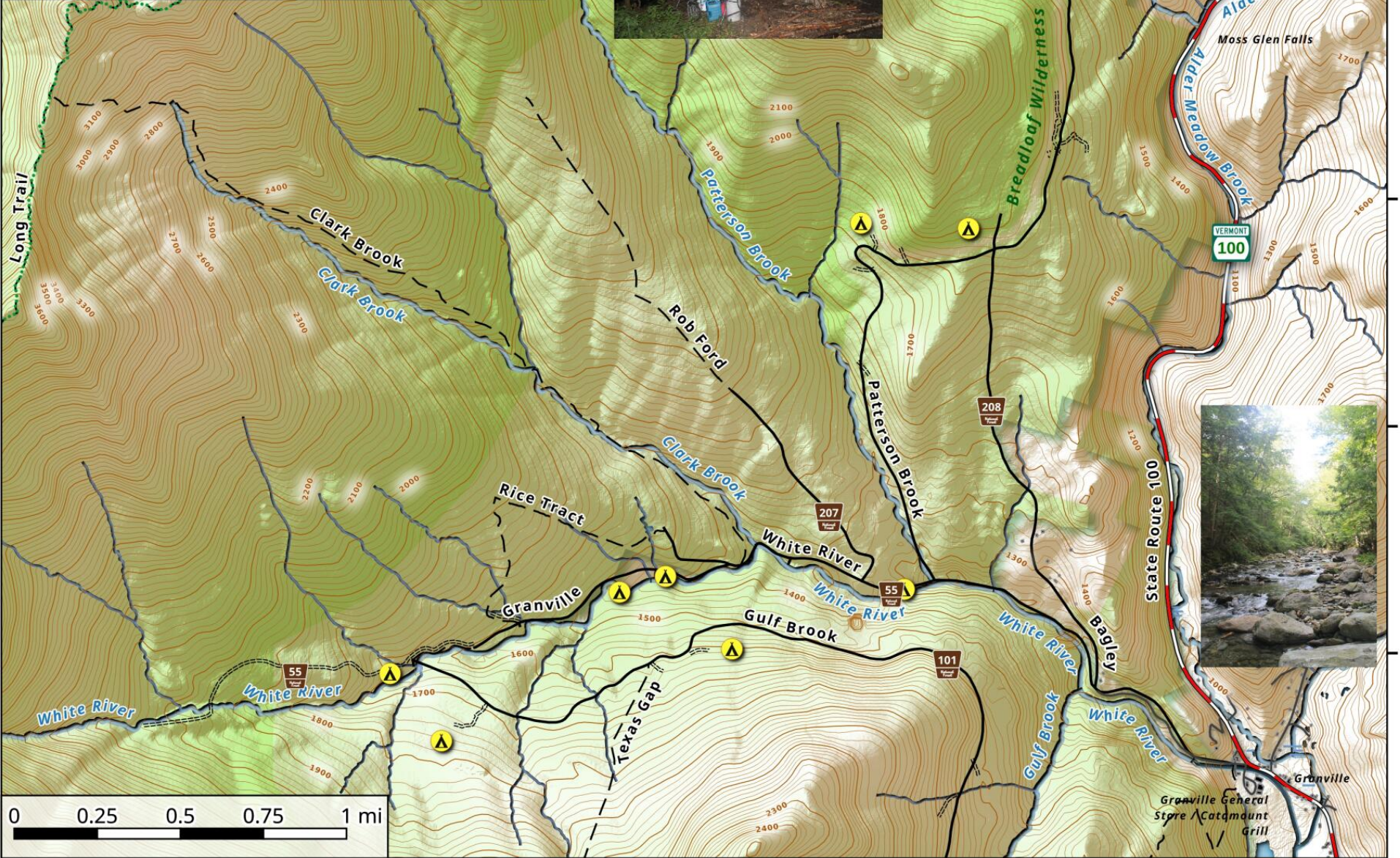


Map, October 29, 2020 by AndyArthur.org in QGIS 3.16.0-Hannover and Python. Street Map is Copyright © OpenStreetMap contributors, CC BY-SA. USFS Data is from VT GIS. Projection: NAD83 / UTM zone 18N. (WGS84). Contours are 20 feet.

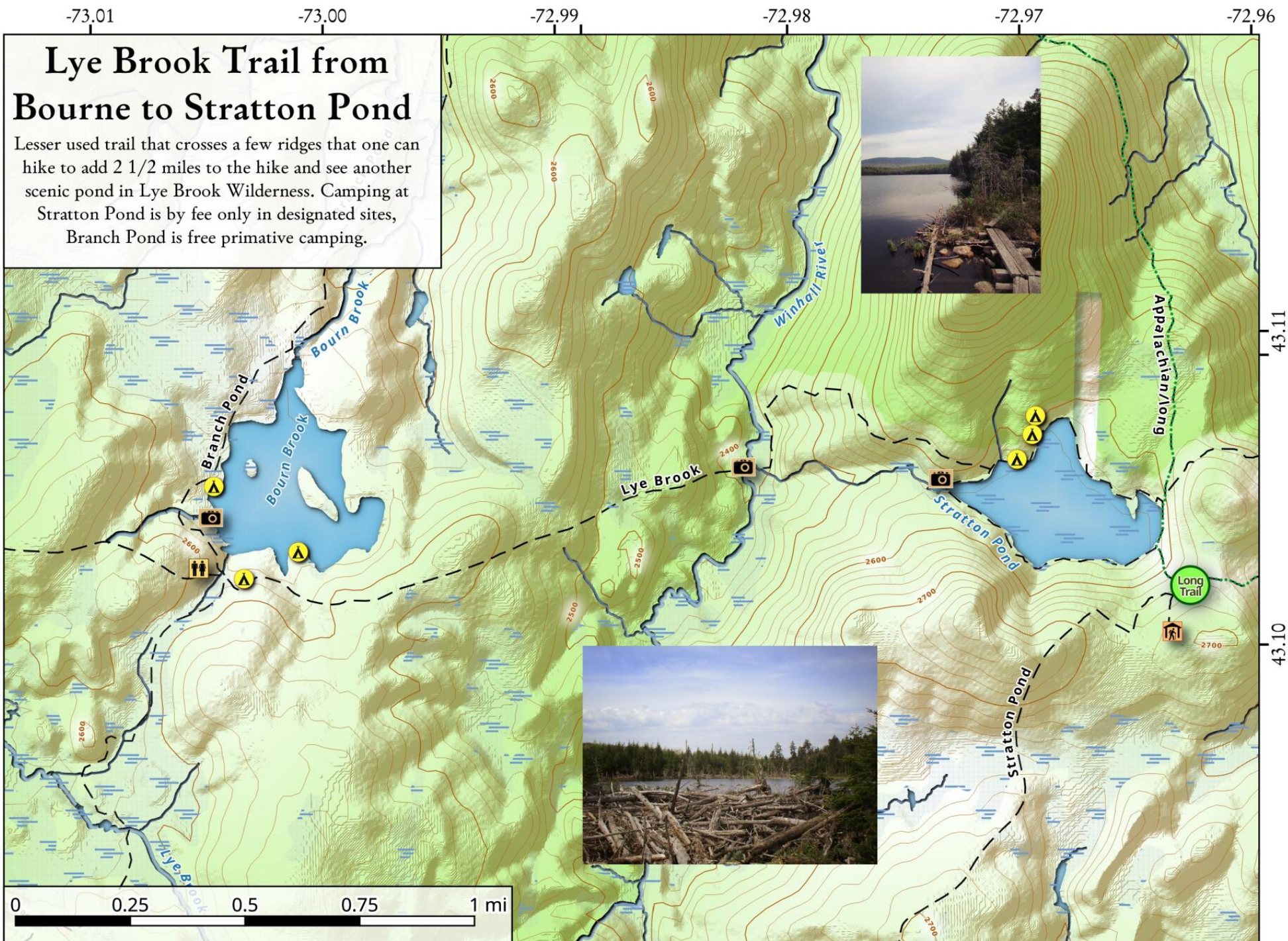
-72.92 -72.91 -72.90 -72.89 -72.88 -72.87 -72.86 -72.85 -72.84

Headwaters of White River

White River Road in Granville offers numerous opportunity to camp along it with access to the Long Trail and the summit of Mount Roosevelt from the Clark Brook Trail



Updated: October 31, 2020 by AndyArthur.org in QGIS 3.16.0-Hannover and Python. Street Map is Copyright © OpenStreetMap contributors, CC BY-SA. USFS Data is from VT GIS. Projection: NAD83 / UTM zone 18N. (WGS84). Contours are 20 feet.



Updated: October 29, 2020 by AndyArthur.org in QGIS 3.16.0-Hannover and Python. Street Map is Copyright © OpenStreetMap contributors, CC BY-SA. USFS Data is from VT GIS. Projection: NAD83 / UTM zone 18N. (WGS84). Contours are 20 feet.

Old Job (Forest Road 10) Camping.

Along Old Job Road (FR 10) in the White Rocks National Recreation Area, there are several campsites along this road as indicated on the map.

Map created by Andy Arthur on 10/24/2024 in QGIS 3.34.11-Prizren. Contains US Forest Service Base Map with campsites added by Andy. More maps at andyarthur.org.

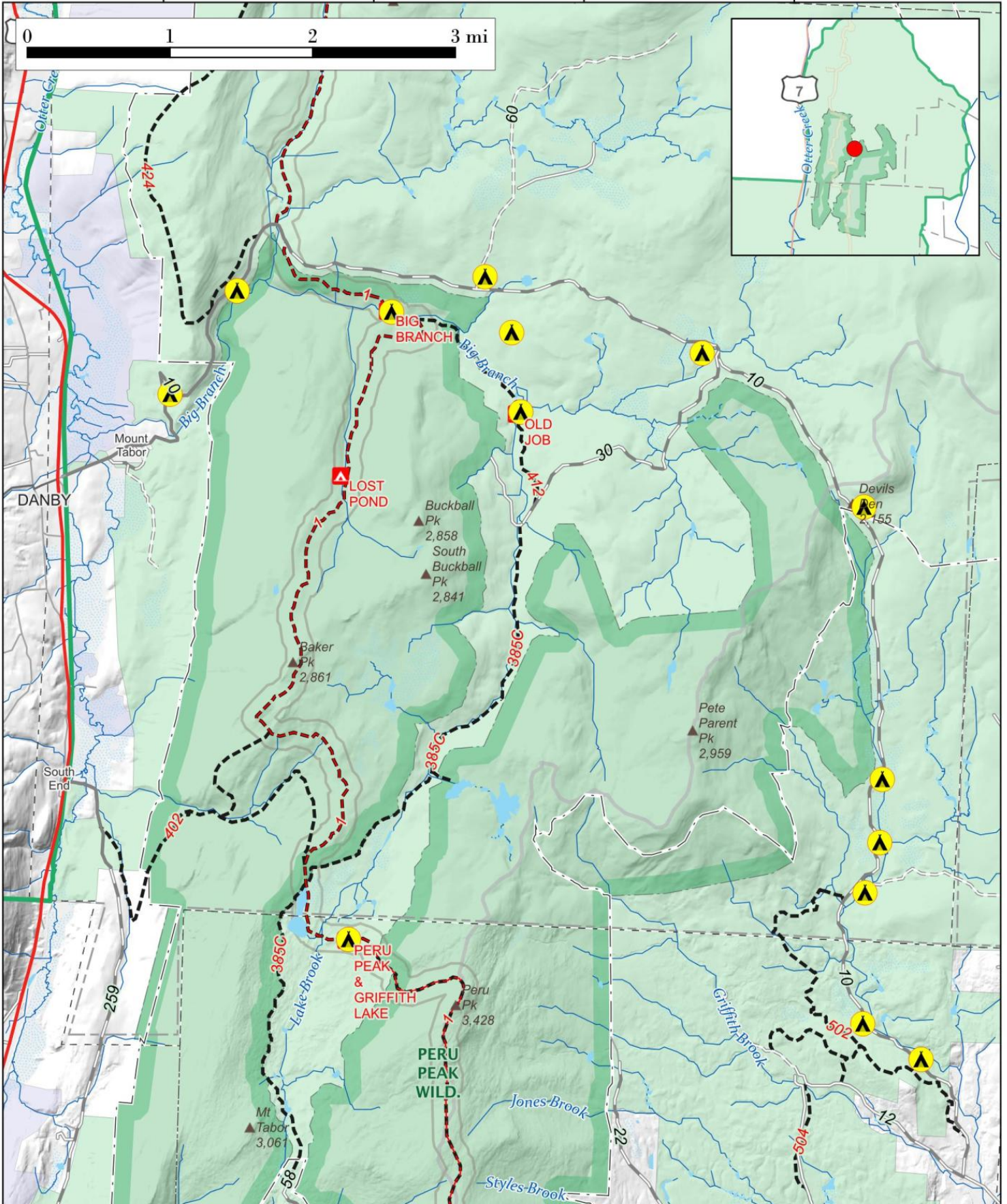
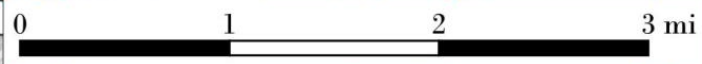


-72.98

-72.95

-72.92

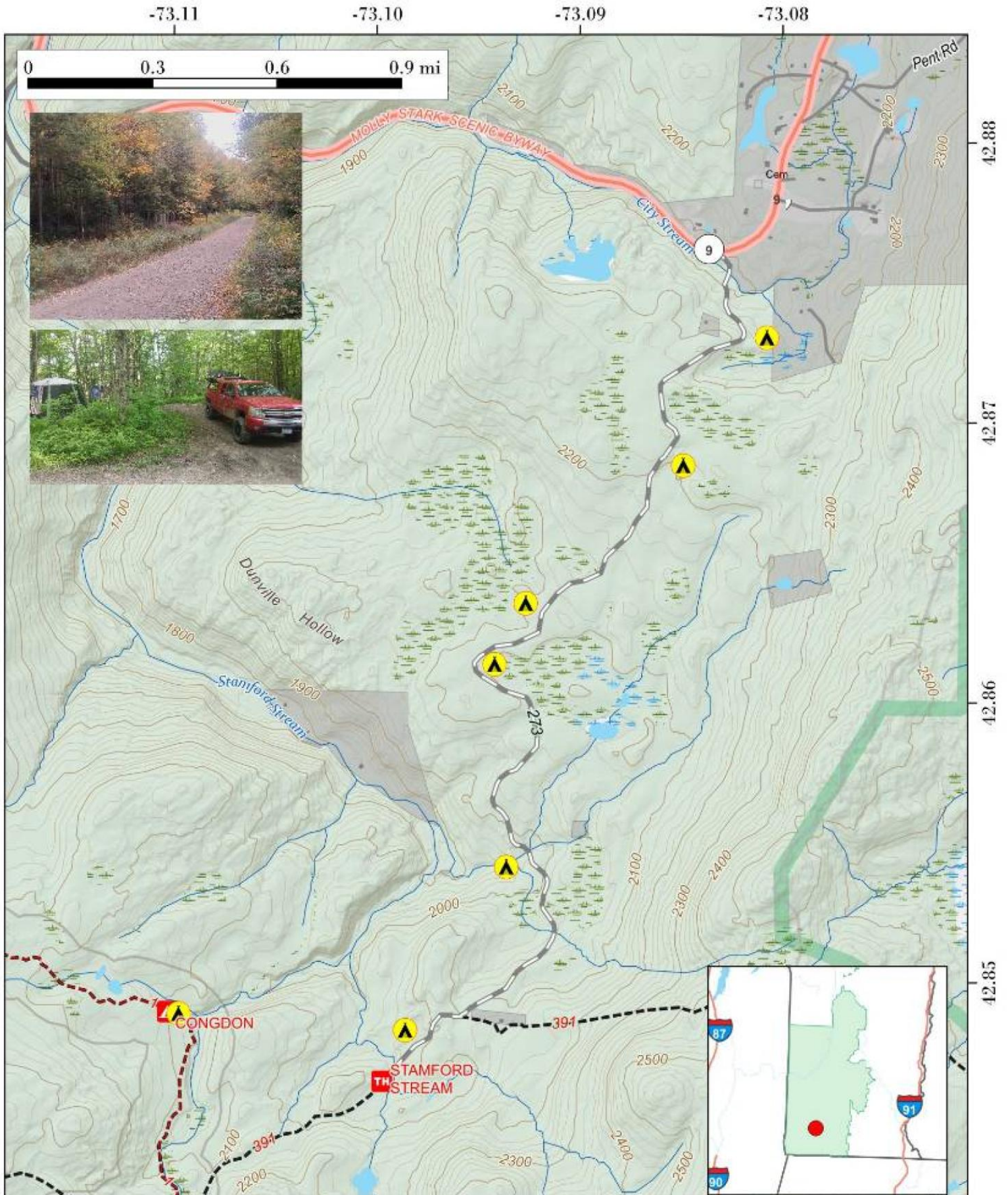
-72.89

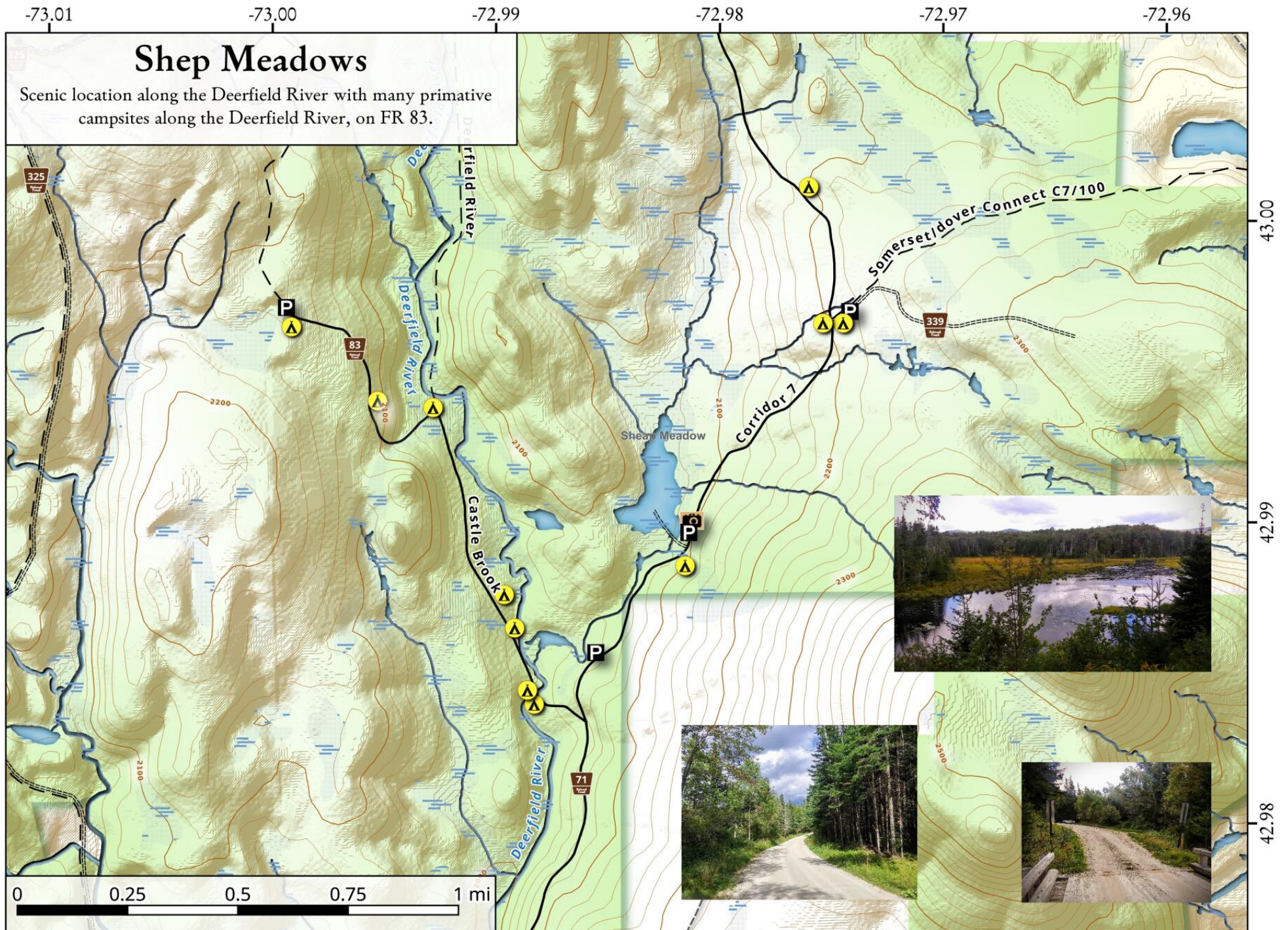


Prospect Mountain Campsites.

Informal roadside campsites about five miles east of Bennington near the Prospect Mountain Cross-Country Ski-Trails.

Map created by Andy Arthur on 10/23/2024 in QGIS 3.34.11-Prizren. Contains US Forest Service Base Map with campsites added by Andy. More maps at andyarthur.org.





Updated: October 28, 2020 by AndyArthur.org in QGIS 3.16.0-Hannover and Python. Street Map is Copyright © OpenStreetMap contributors, CC BY-SA. USFS Data is from VT GIS. Projection: NAD83 / UTM zone 18N. (WGS84). Contours are 20 feet.

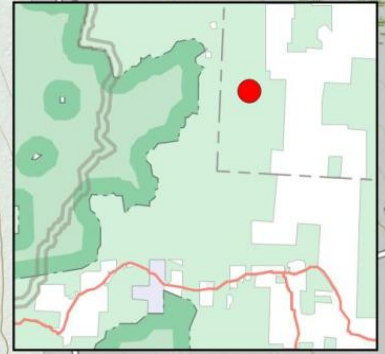
Somerset Airfield Campground.

Free, developed camping area with pit privies off of the Deerfield River. No camping for the next 3/4 mile north of Stratton Airfield, however beyond there near Shep Meadow additional dispersed camping opportunities exist (seasonal use only - gated in winter).

Map created by Andy Arthur on 10/29/2024 in QGIS 3.34.11-Prizren. Contains US Forest Service Base Map with additional campsites added by Andy. More maps at andyarthur.org.

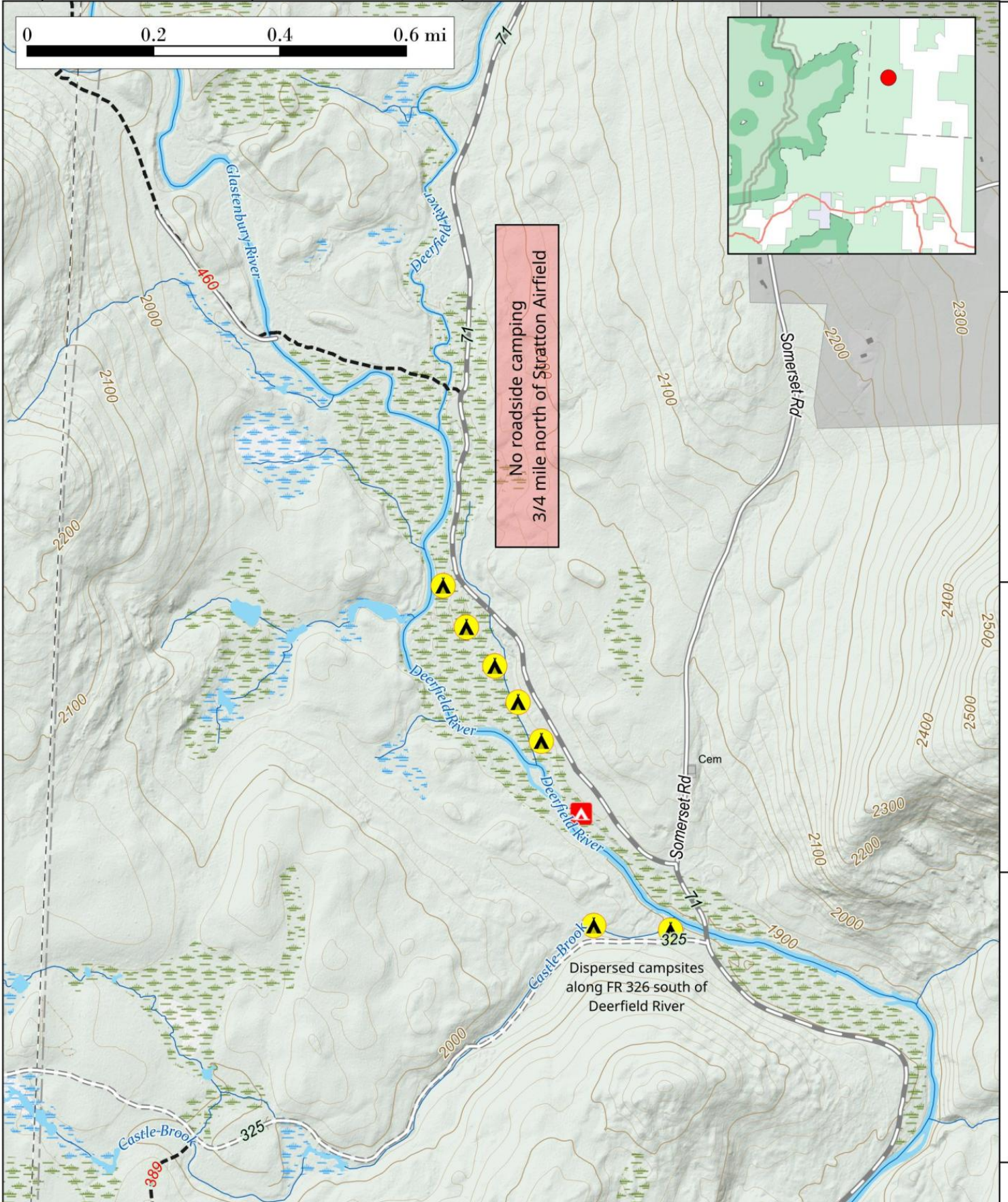


-73.01 -73.00 -72.99 -72.98 -72.97



No roadside camping
3/4 mile north of Stratton Airfield

Dispersed campsites
along FR 326 south of
Deerfield River



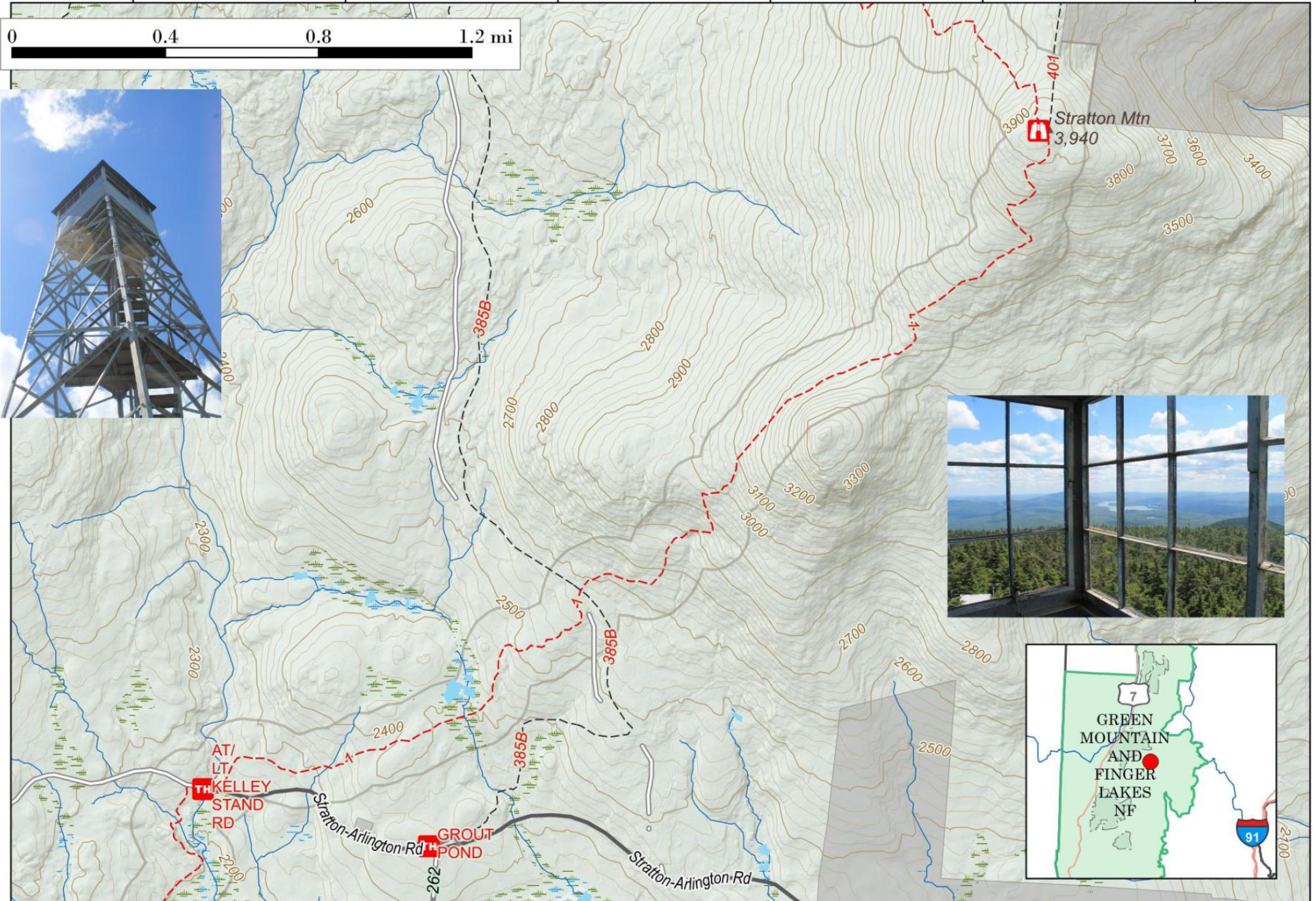
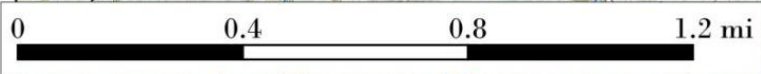
42.97
42.96
42.96
42.95
42.95

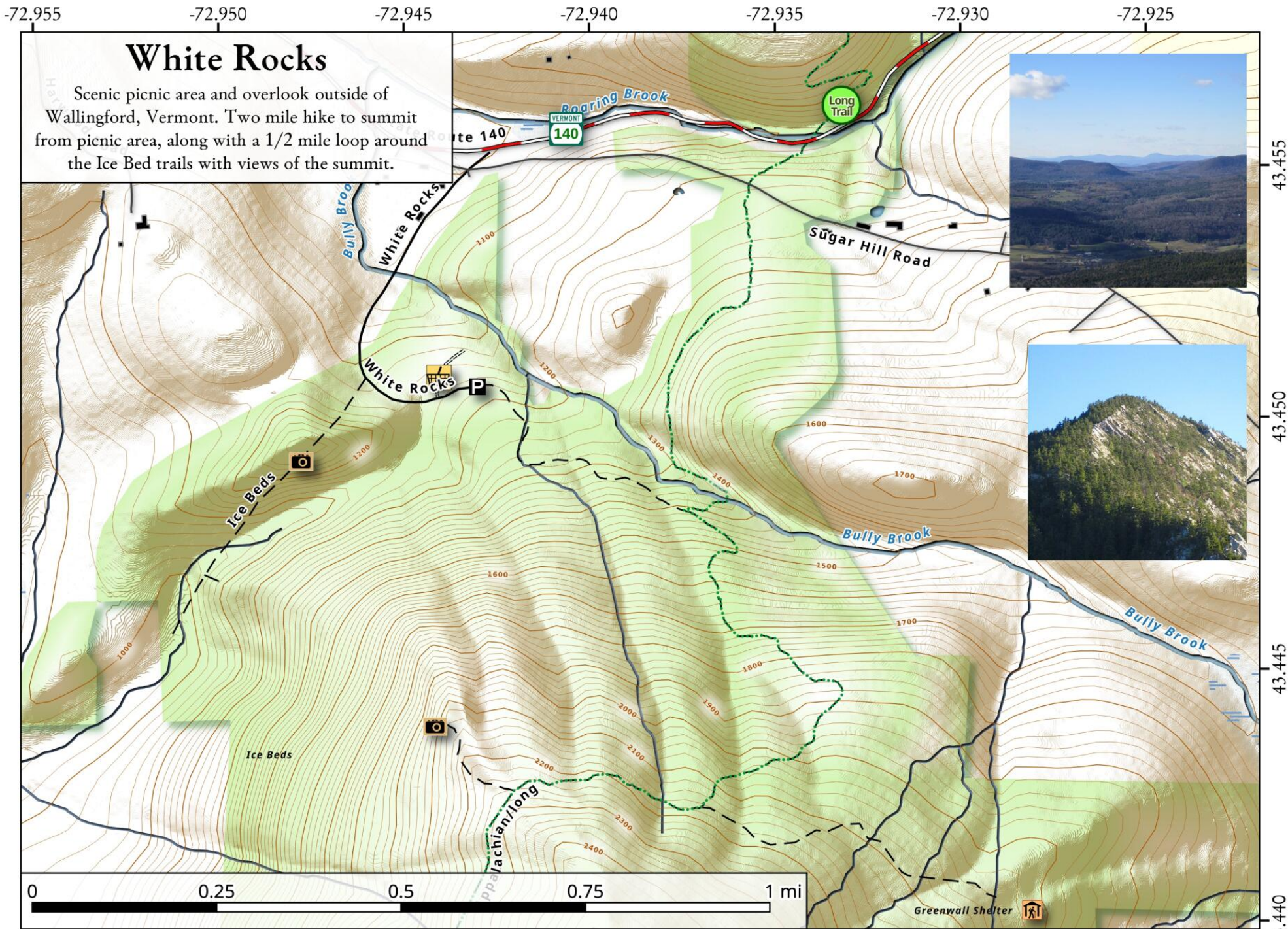
Stratton Mountain Firetower. 1 1/2 mile hike to a fire tower near Grout Pond and Kelley Stand in the Green Mountain National Forest.



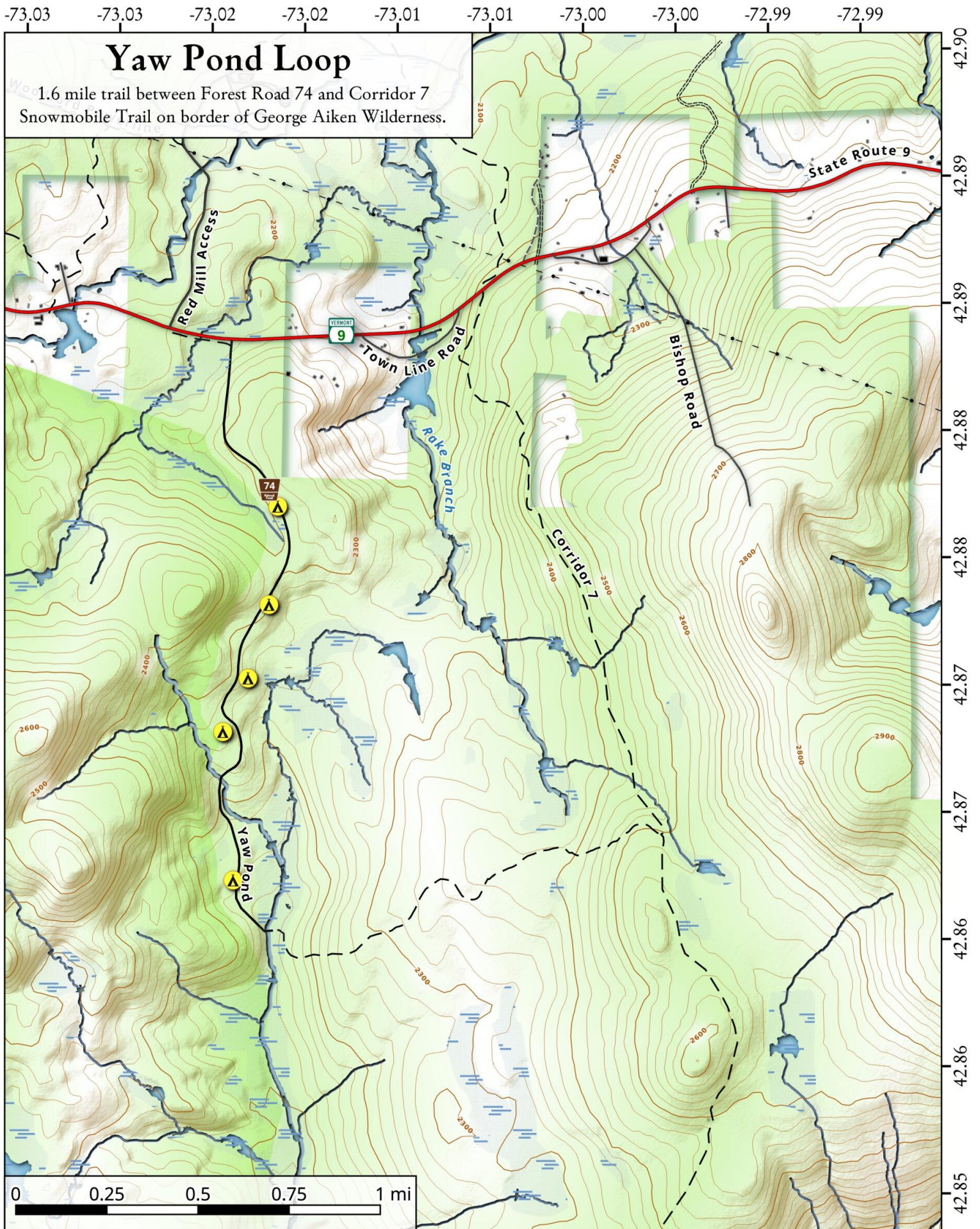
Map created by Andy Arthur on 10/17/2024 in QGIS 3.34.11-Prizren. Contains US Forest Service Base Map. More maps at andyarthur.org.

-72.97 -72.96 -72.95 -72.94 -72.93 -72.92





Updated: October 29, 2020 by AndyArthur.org in QGIS 3.16.0-Hannover and Python. Street Map is Copyright © OpenStreetMap contributors, CC BY-SA. USFS Data is from VT GIS. Projection: NAD83 / UTM zone 18N. (WGS84). Contours are 20 feet.



Map, October 27, 2020 by AndyArthur.org in QGIS 3.16.0-Hannover and Python. Street Map is Copyright © OpenStreetMap contributors, CC BY-SA. USFS Data is from VT GIS. Projection: NAD83 / UTM zone 18N. (WGS84). Contours are 20 feet.