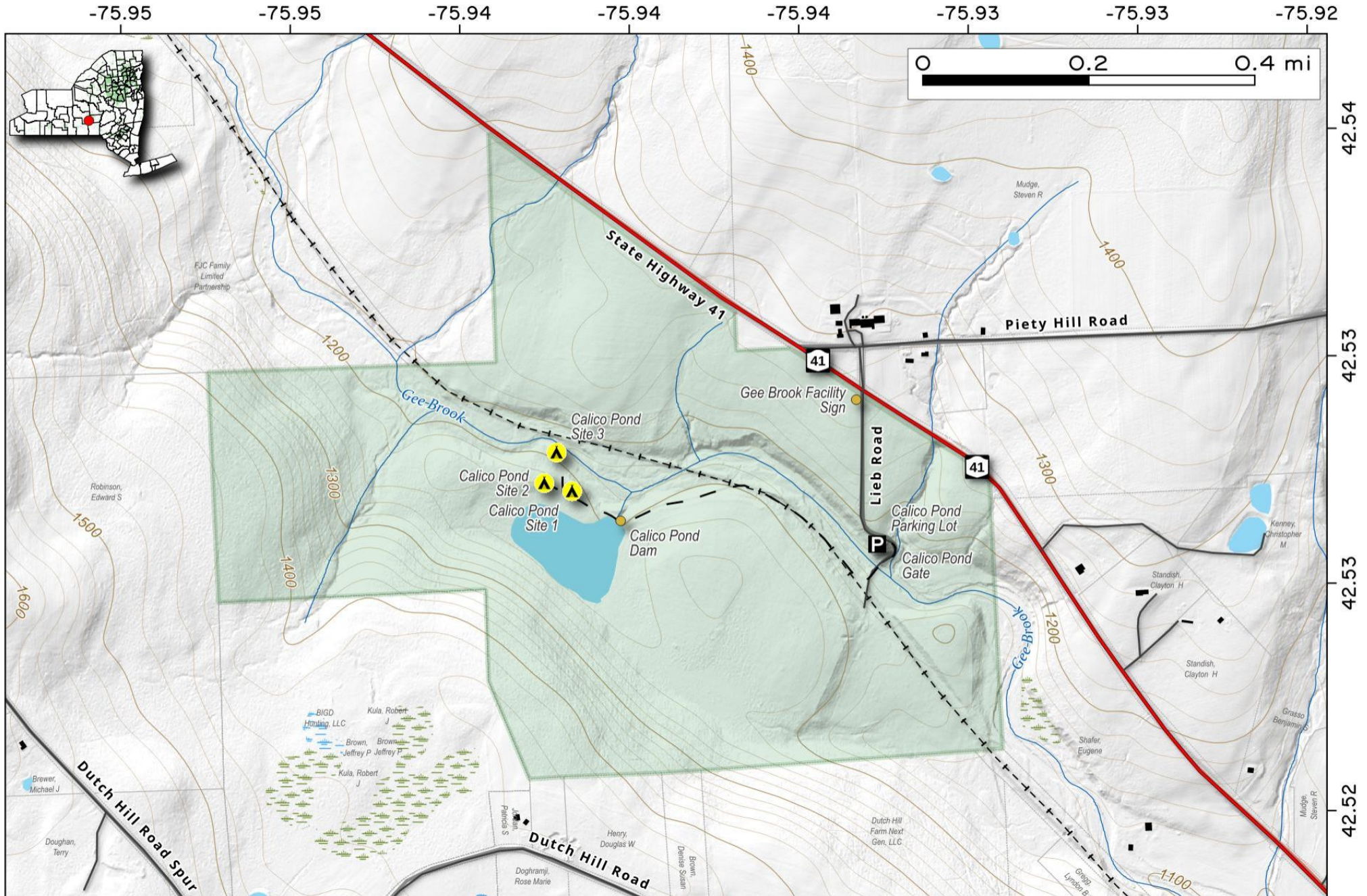


Calco Pond. A man-made pond off of NY 41 in the Gee Brook State Forest has a designated tent camping area. This is located on hill west of Lower Cincinnatus on NY 41, off Lieb Road. Camping is by free permit by calling the Sherburne DEC office.

Map created by Andy Arthur on 4/9/2025 in QGIS 3.34.15-Prizren. Contains US Forest Service Base Map, NYS DEC data with additional campsites added by Andy. More maps at andyarthur.org.



Gee Brook State Forest.

Two parcels outside of Lower Cincinnatus (where NY 23 ends at NY 26), north of Willet, home to Calco Pond and crossed by an old railroad grade.

Map created by Andy Arthur on 9/5/2024 in QGIS 3.34.10-Prizren. Contains DEC Trails/Assets, Additional Campsites/Trails by Andy other data ©OpenStreetMap Data, OSM Maintainers. More maps at andyarthur.org.

