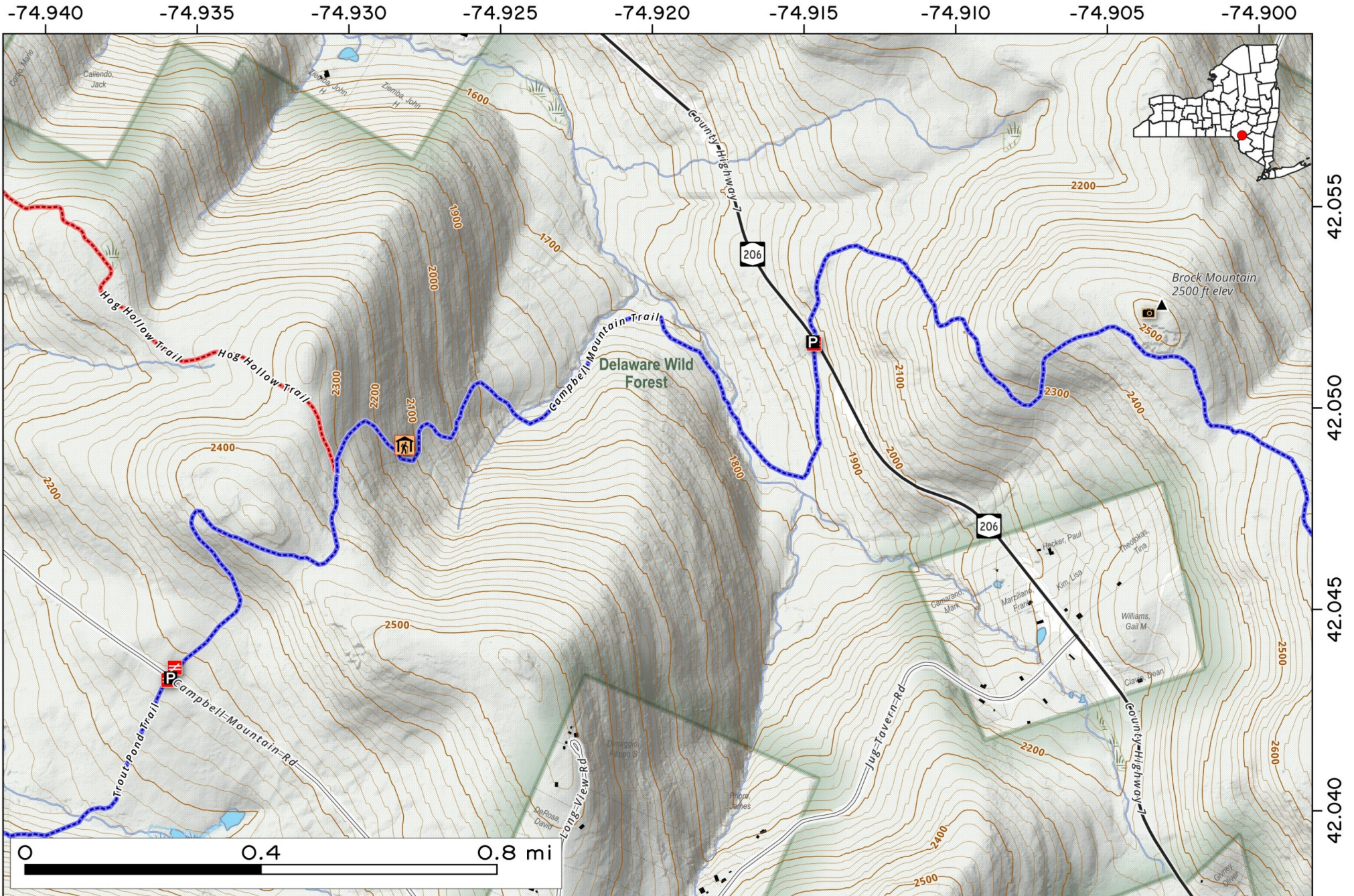


# The Campbell Mountain Trail - Cat Hollow Lean To, Brouck Mountain. Hiking opportunities along NY 206 - Campbell Mountain in Delaware Wild Forest.

Map created by Andy Arthur on 1/12/2026 in QGIS 3.44.6-Solothurn. Contains NYS GIS and DEC data with additional campsites added by Andy. More maps at [andyarthur.org](http://andyarthur.org).

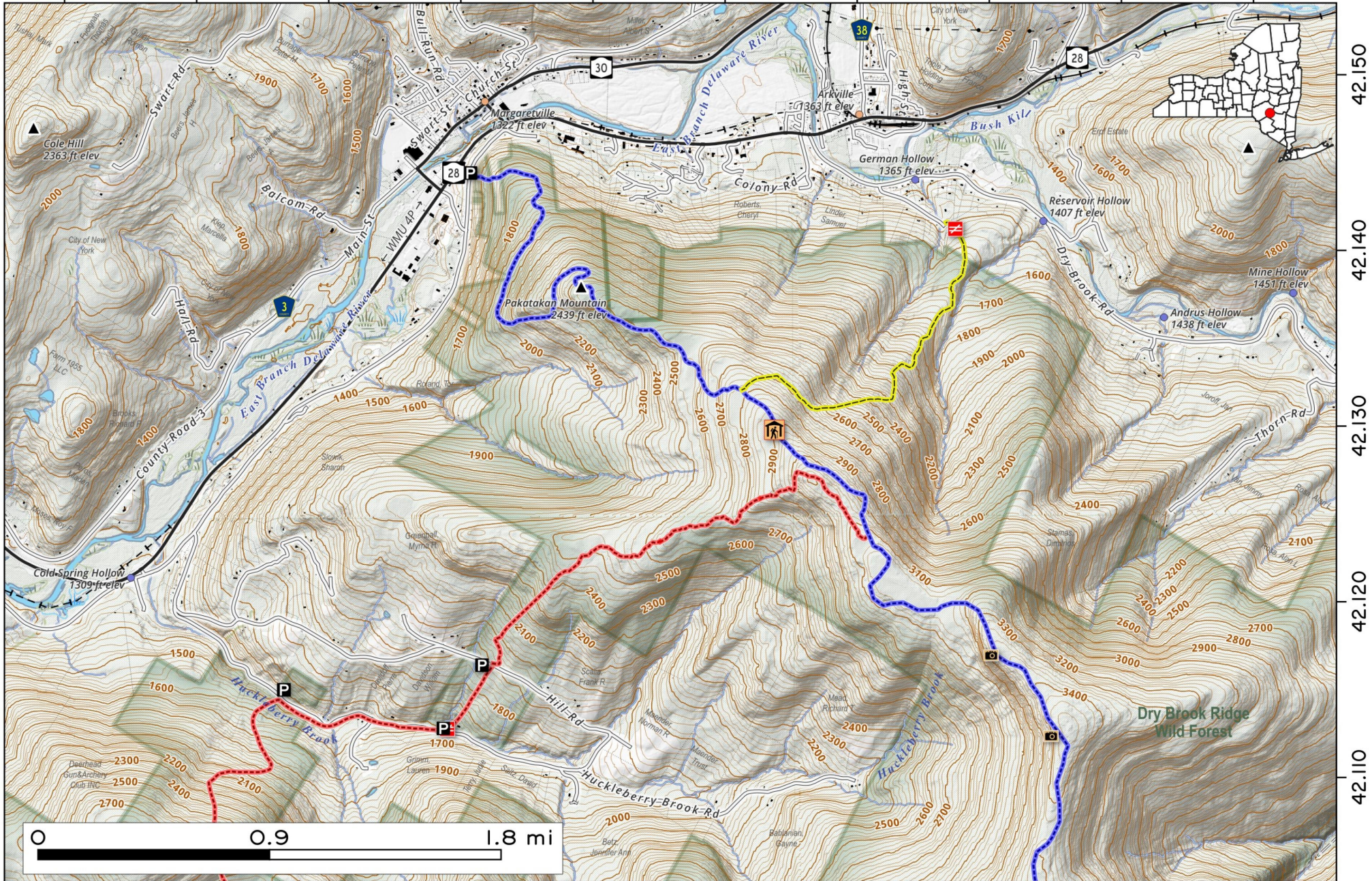


**Pakatakan Mountain - Dry Brook Trail.** Heading south on the Dry Brook Trail from Margaretville, you follow an old logging road. At 2 1/2 miles you reach the yellow German Hollow Trail. At 3 1/2 miles you reach the Huckleberry Loop Trail, at 5 miles, you skirt the ridgeline with excellent views to the west.



Map created by Andy Arthur on 1/22/2026 in QGIS 3.44.6-Solothurn. Contains NYS GIS and DEC data with additional campsites added by Andy. More maps at [andyarthur.org](http://andyarthur.org).

-74.680    -74.670    -74.660    -74.650    -74.640    -74.630    -74.620    -74.610    -74.600    -74.590



42.150  
42.140  
42.130  
42.120  
42.110