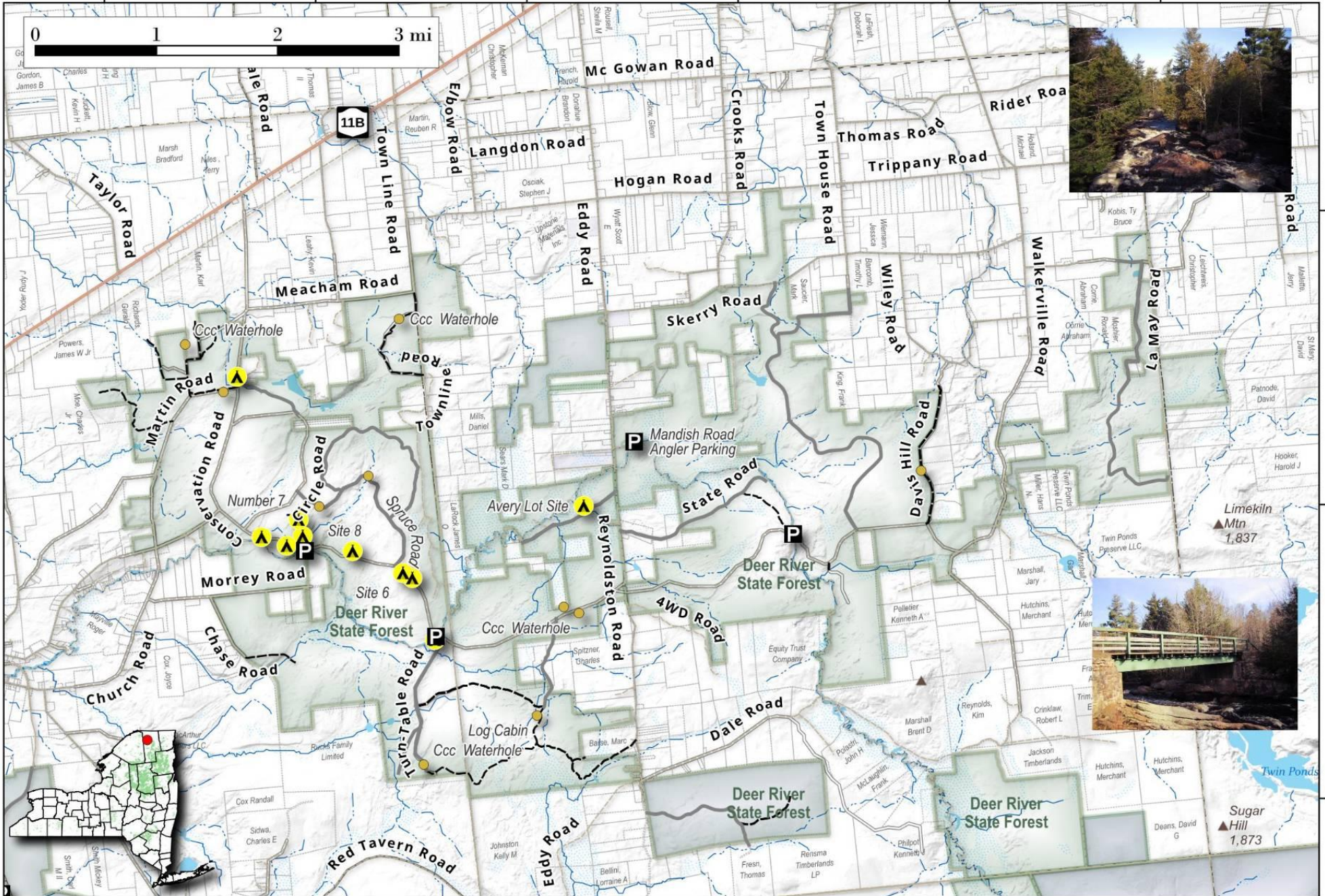


Deer River State Forest. 12,273-acre state lands in Franklin County north of the Adirondack Park with a mixture of hills and rough dirt roads with campsites.



Map created by Andy Arthur on 11/1/2024 in QGIS 3.34.11-Prizren. Contains US Forest Service Base Map with additional campsites added by Andy. More maps at andyarthur.org.

-74.54 -74.50 -74.46 -74.43 -74.39 -74.36



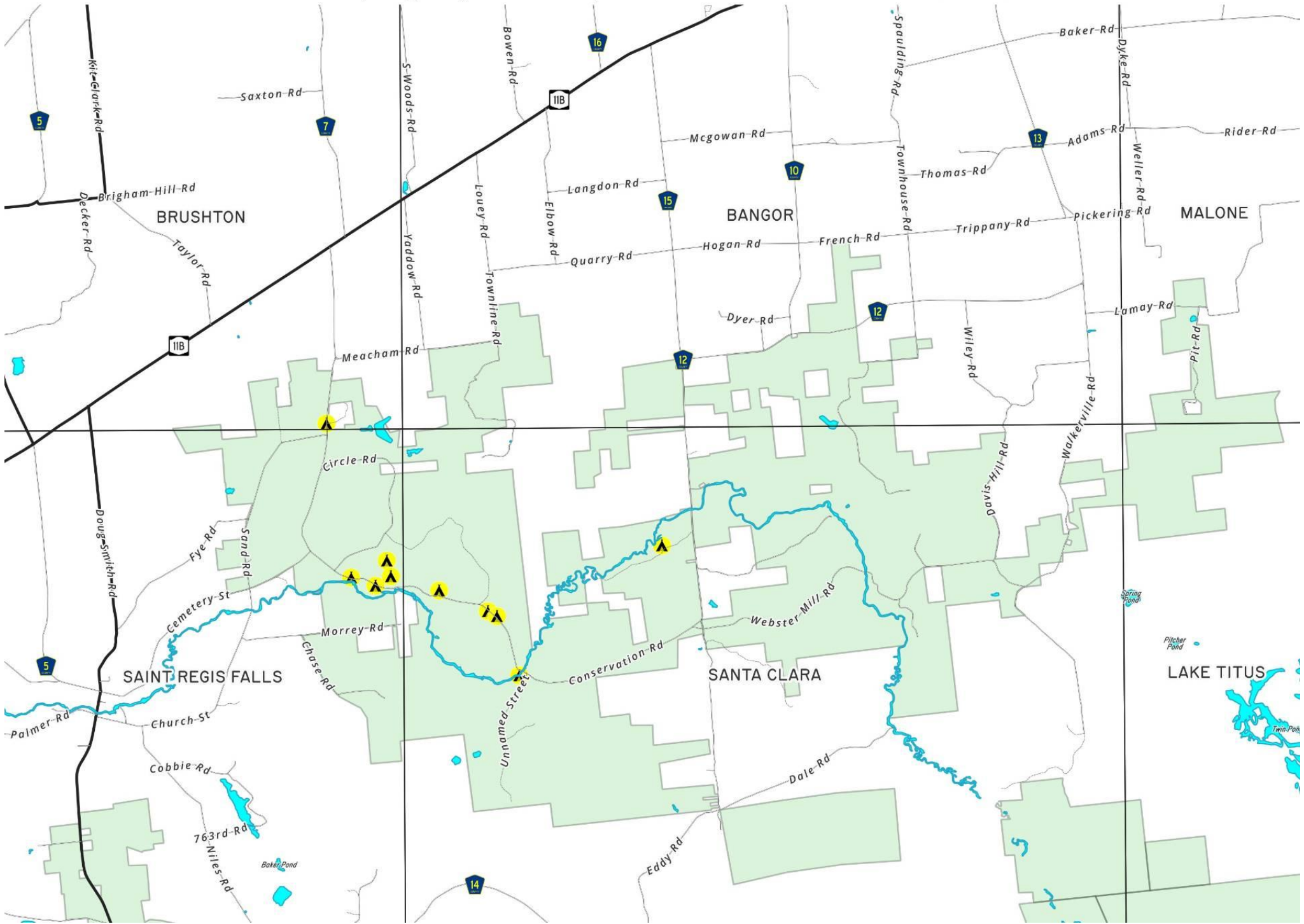
44.77

44.74

44.70

Deer River State Forest USGS 1:24k Topographic Map Index

Download Free USGS Topographic Maps Here:
<https://tinyurl.com/nyusgstopo>
Map by Andy Arthur, October 23, 2025



St. Regis Reservoir. Hydro-electric reservoir south of St. Regis Falls in Northern Adirondacks.

There is a dam on Spring Street and a boat launch nearby.

Map created by Andy Arthur on 5/2/2025 in QGIS 3.34.15-Prizren. Contains US Forest Service Base Map, NYS DEC data with additional campsites added by Andy. More maps at andyarthur.org.

