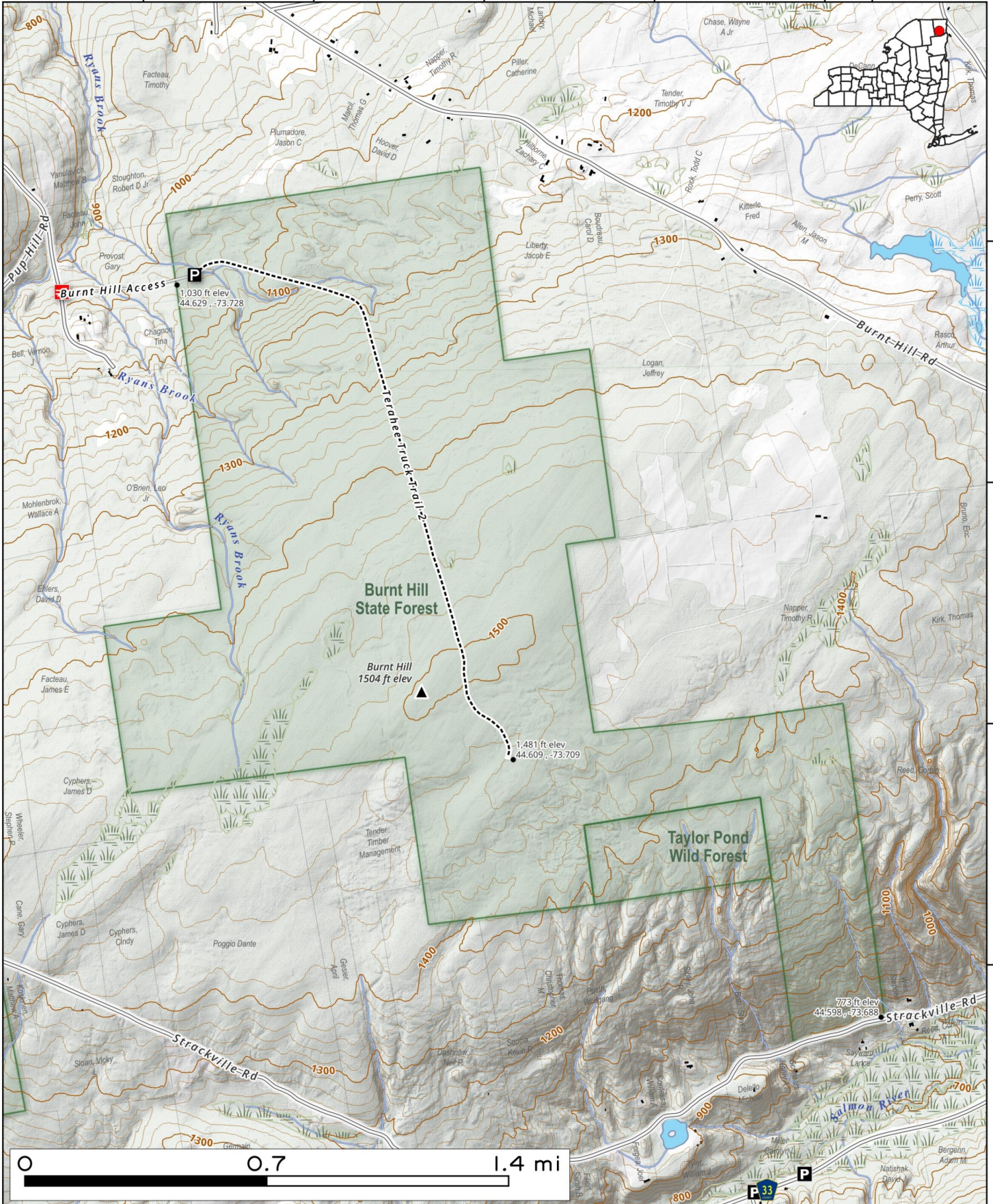


# Burnt Hill State Forest. 1,500 acres of state land off Pup Hill Road in Saranac.



Map created by Andy Arthur on 2/2/2026 in QGIS 3.44.6-Solothurn. Data: NYS GIS and NYS DEC. More at [andyarthur.org](http://andyarthur.org).

-73.73                      -73.72                      -73.71                      -73.70                      -73.69



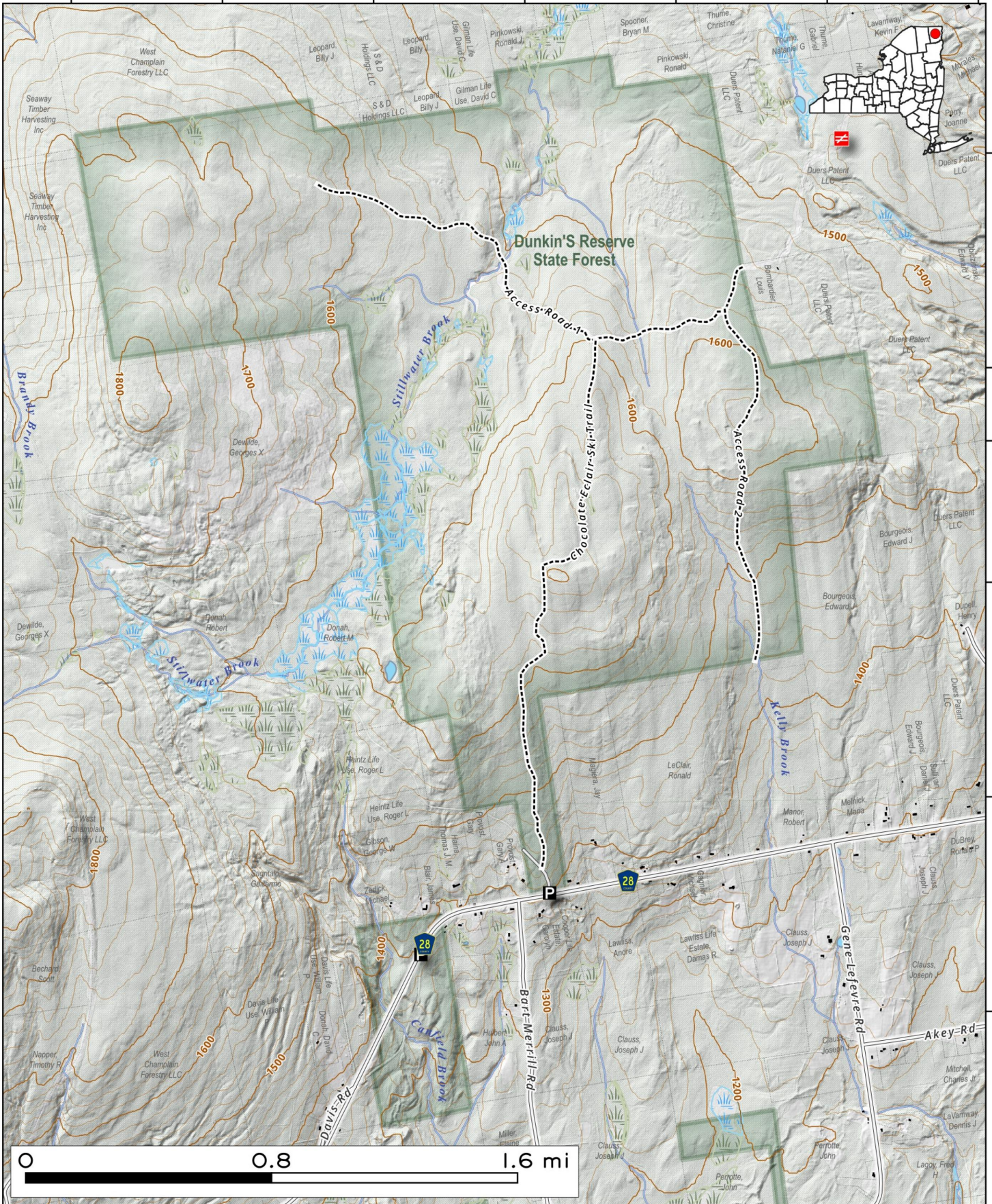
44.63  
44.62  
44.61  
44.60  
44.59

# Dunkin's Reserve State Forest 2,433-acre state forest consisting of several parcels along General LeRoy Manor Road in the hills N outside of Beekmantown.

Map created by Andy Arthur on 1/7/2026 in QGIS 3.44.6-Solothurn. Contains NYS GIS and DEC data with additional campsites added by Andy. More maps at [andyarthur.org](http://andyarthur.org).



-73.70      -73.69      -73.68      -73.67      -73.66      -73.65      -73.64



44.78

44.77

44.76

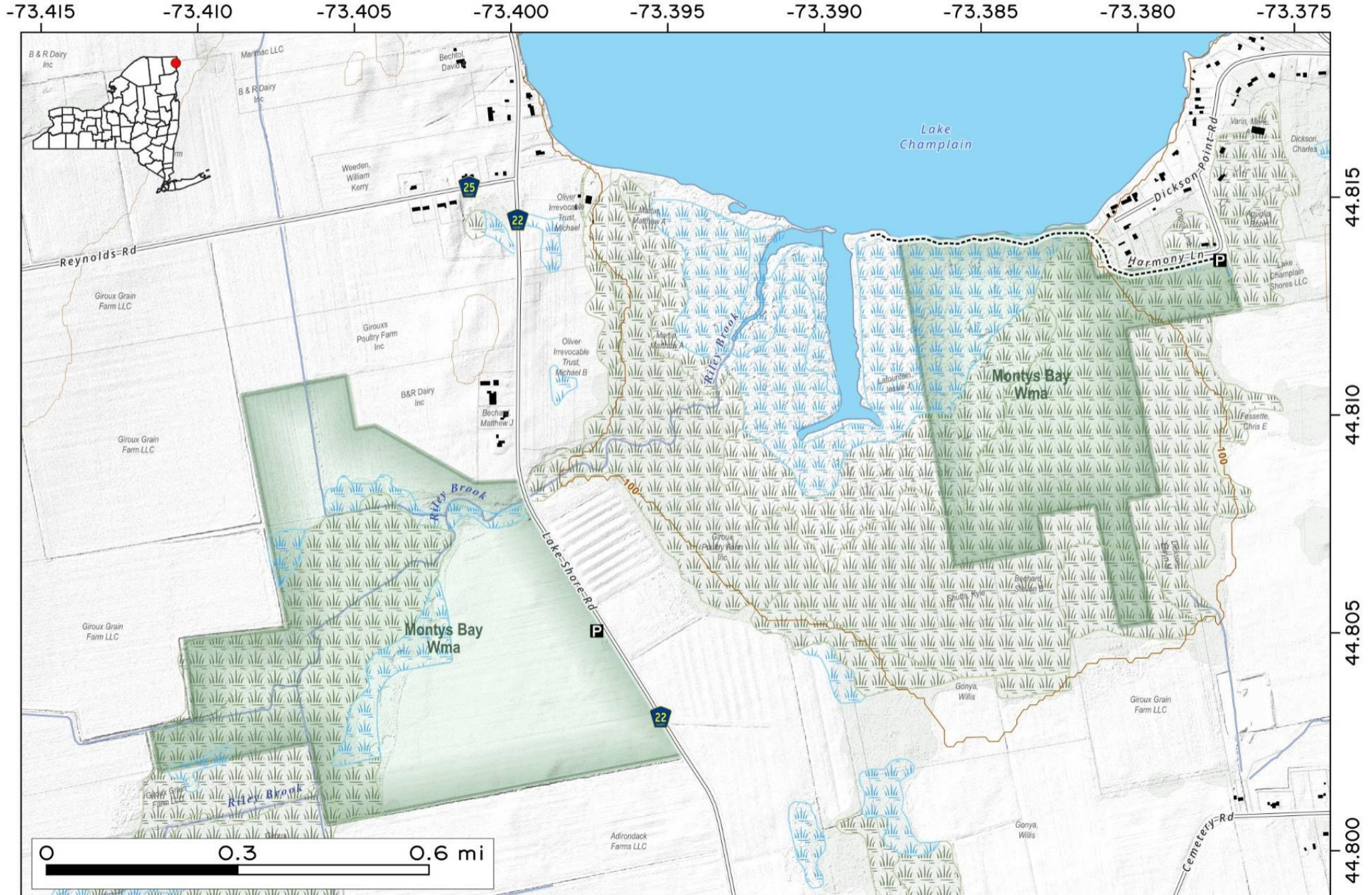
44.75

44.74

Monty's Bay Wildlife Management Area (WMA) is a 318-acre public land in Chazy. Much of the area consists of swamp and wetland habitats, attracting a variety of wildlife. The WMA is open year-round for outdoor recreation, including hunting (deer and waterfowl), fishing, hiking, and trapping (mink and muskrat). It is a significant stop-over point for migrating birds, such as Canada and snow geese in the fall and various puddle ducks in the spring, making it a popular spot for birdwatching.



Map created by Andy Arthur on 11/5/2025 in QGIS 3.44.3-Solothurn. Contains NYS GIS and DEC data with additional campsites added by Andy. More maps at [andyarthur.org](http://andyarthur.org).



# Moon Pond State Forest.

768 acres in rolling country north of the Adirondack Park, south of Ellenburg. Trail back to Moon Pond from the state forest.

Map created by Andy Arthur on 12/13/2024 in QGIS 3.34.12-Prizren. Contains US Forest Service Base Map, NYS DEC Ddata with additional campsites added by Andy. More maps at [andyarthur.org](http://andyarthur.org).



-73.87                      -73.86                      -73.85                      -73.84                      -73.82

