

Chautauqua Lake WMA. State land providing shoreline access to the lake from the shore across from Bemus Point.

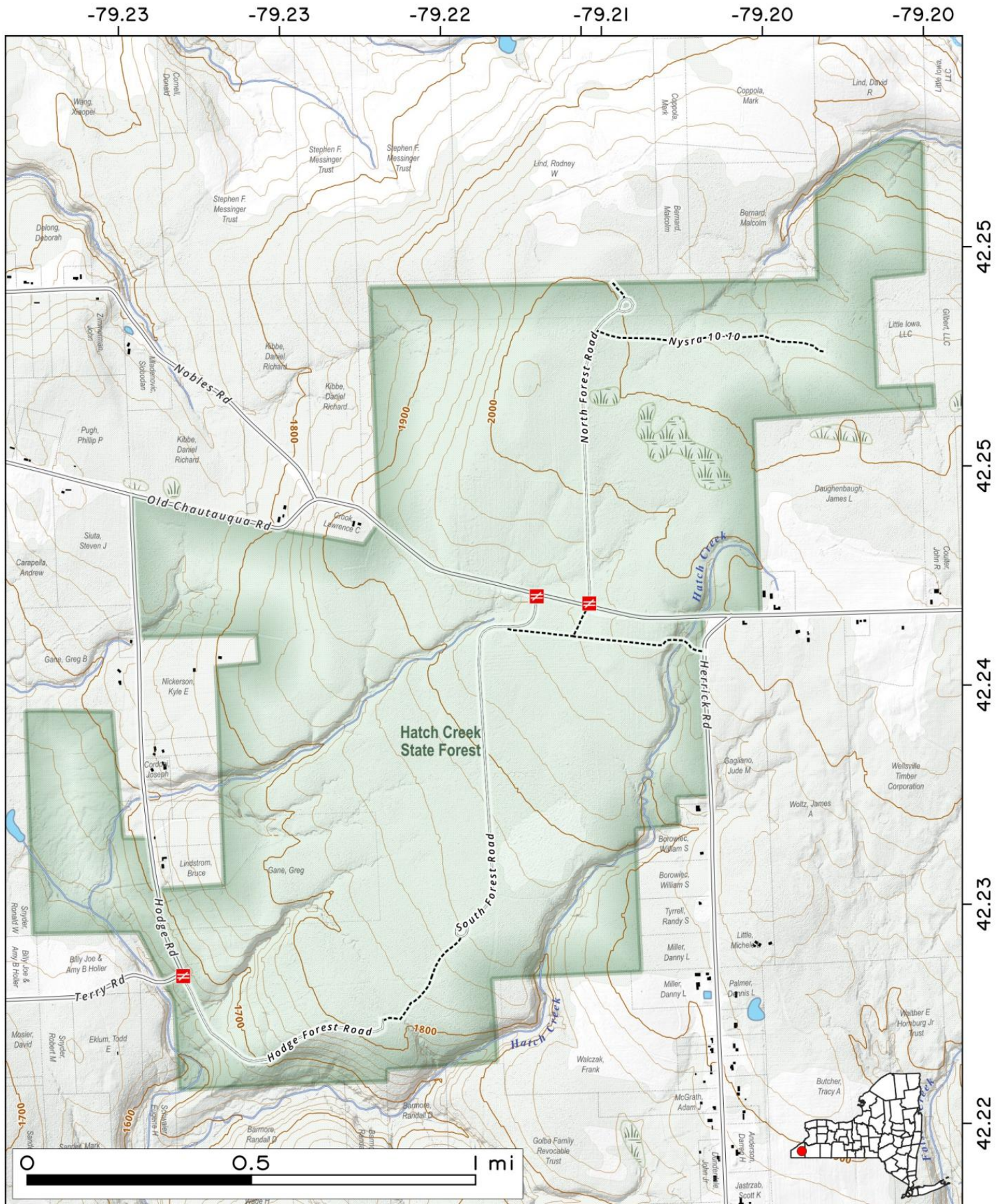
Map created by Andy Arthur on 3/27/2025 in QGIS 3.34.15-Prizren. Contains US Forest Service Base Map, NYS DEC data with additional campsites added by Andy. More maps at andyarthur.org.



Hatch Creek State Forest is a 1,283-acre forest in New York offering diverse recreation. Visitors enjoy hiking, biking, horseback riding, and cross-country skiing on state forest roads. It provides a quiet, scenic, uncrowded experience for wildlife spotting.



Map created by Andy Arthur on 11/13/2025 in QGIS 3.44.4-Solothurn. Contains NYS GIS and DEC data with additional campsites added by Andy. More maps at andyarthur.org.



The Wellman Multiple Use Area in Chautauqua County offers diverse recreational activities like hiking, birdwatching, and hunting. This land features wetlands, forests, and grasslands, supporting various wildlife.

Map created by Andy Arthur on 7/22/2025 in QGIS 3.44.0-Solothurn. Contains US Forest Service Base Map, NYS DEC data with additional campsites added by Andy. More maps at andyarthur.org.

