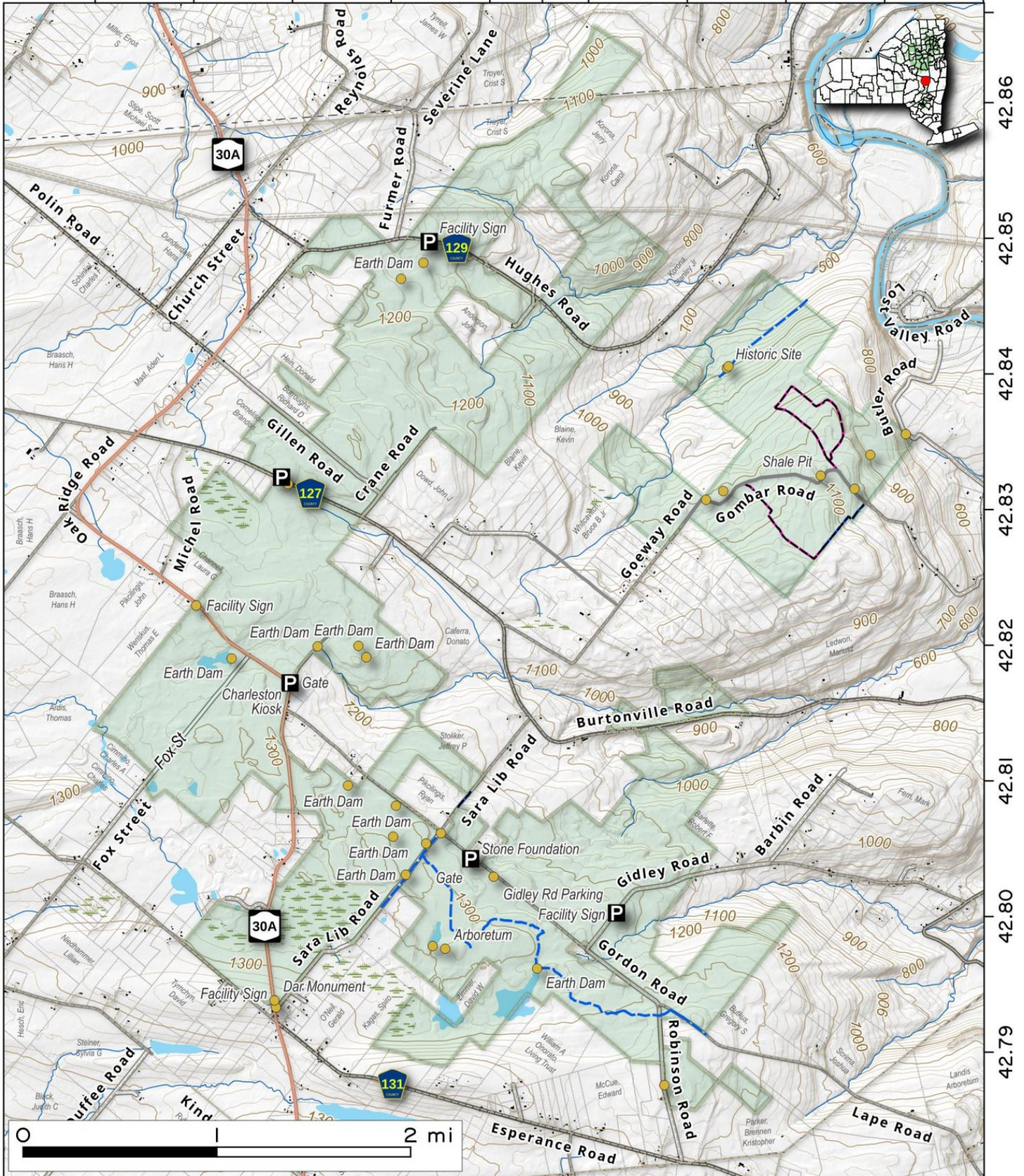


Charleston State Forest. 4,000 acres west of the Lost Valley and north of Esperance along NY 30A.

Map created by Andy Arthur on 4/3/2025 in QGIS 3.34.15-Prizren. Contains US Forest Service Base Map, NYS DEC data with additional campsites added by Andy. More maps at andyarthur.org.

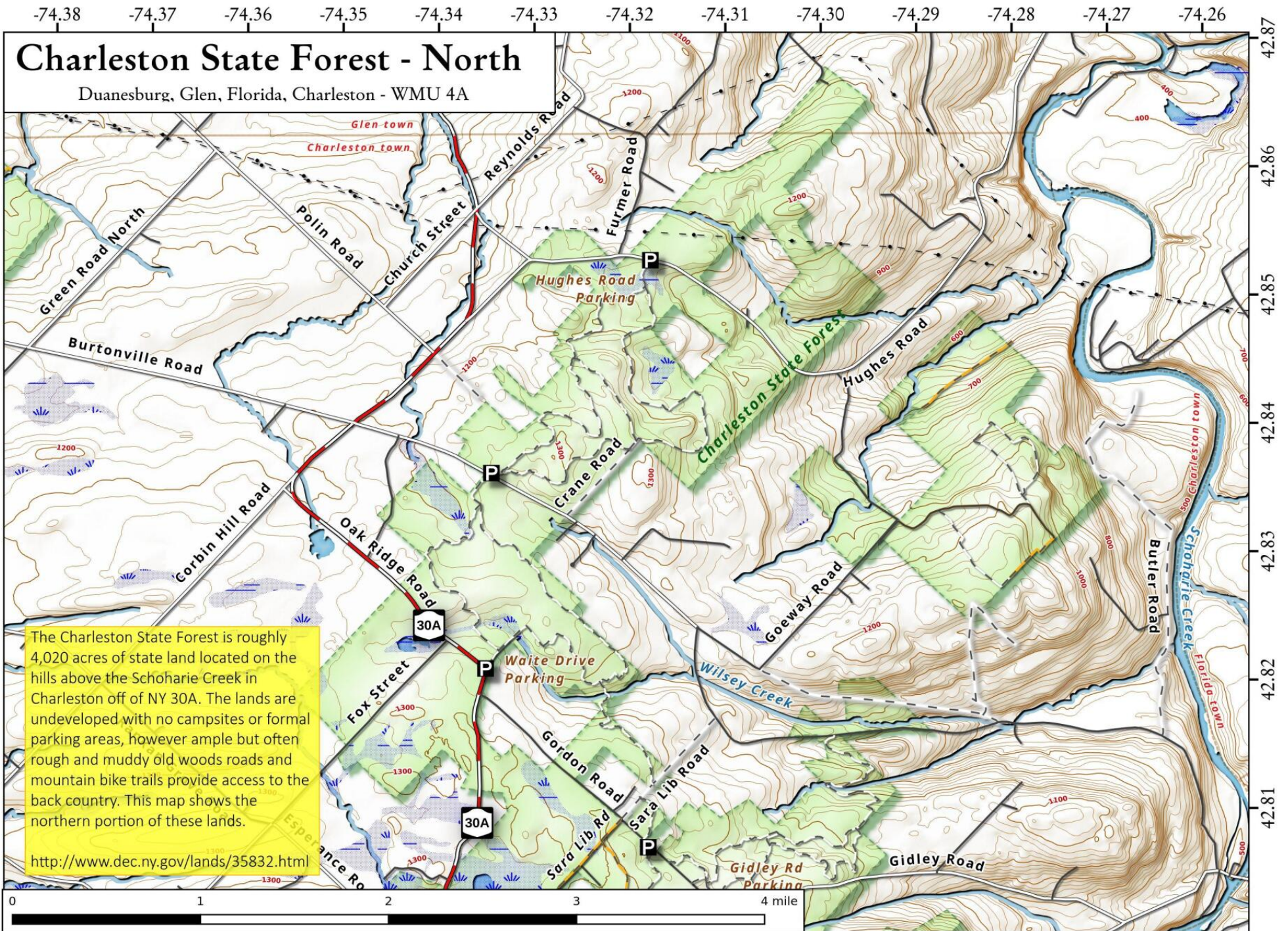


-74.35 -74.34 -74.33 -74.32 -74.31 -74.30 -74.29 -74.28 -74.27 -74.26



42.86
42.85
42.84
42.83
42.82
42.81
42.80
42.79





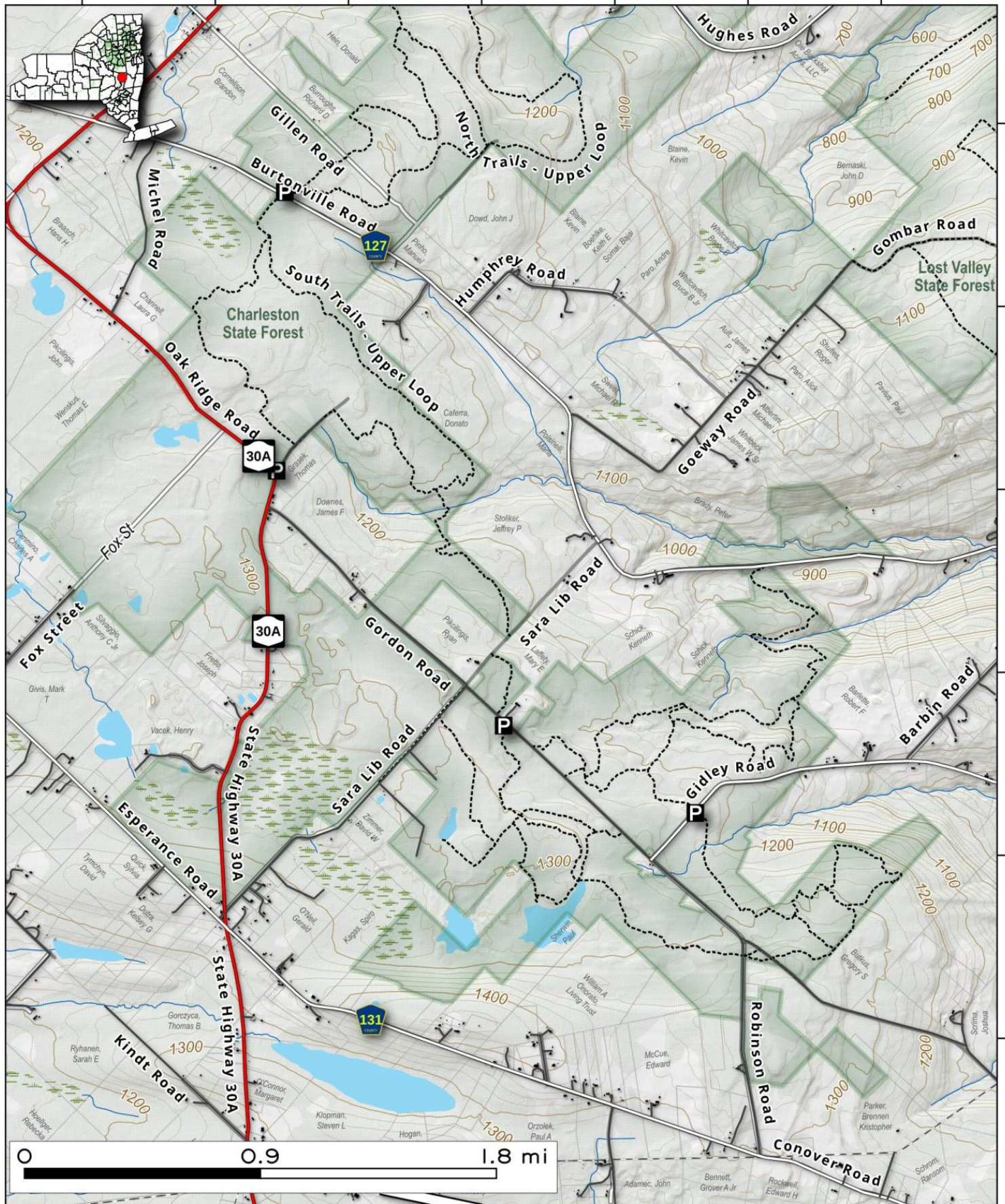
Charleston State Forest- North Map, September 9, 2017 by AndyArthur.org in QGIS 2.18.11 and Python. Street Map is Copyright © OpenStreetMap contributors, CC BY-SA. NYSDEC Data: DEM, Borders, ADK Wetlands, Trails, Assets. True North. 1 inch = 0.6 miles. Projection: NAD83 / UTM zone 18N. Coordinates: 0.01° latitude-longitude (WGS84). Contours are 20 feet.

Charleston State Forest (Southern Portion). 4,000 acre state forest along NY 30A between Sloansville and Glen. There are several abandoned and proposed trails shown on this map.



Map created by Andy Arthur on 7/1/2025 in QGIS 3.34.15-Prizren. Contains US Forest Service Base Map, NYS DEC data with additional campsites added by Andy. More maps at andyarthur.org.

-74.35 -74.34 -74.33 -74.32 -74.31 -74.30 -74.29



42.84
42.83
42.82
42.81
42.80
42.79