

Cascade Pond and Stephens Pond. 2 1/2 miles from Durant Road near Lake Durant, crosses a bridge and the red-blazed trail goes to Cascade pond. From there it is 1 1/2 miles to Stephens Pond which has a lean-to on it.

Map created by Andy Arthur on 12/18/2025 in QGIS 3.44.5-Solothurn. Contains NYS GIS and DEC data with additional campsites added by Andy. More maps at andyarthur.org.



-74.460 -74.450 -74.440 -74.430 -74.420 -74.410 -74.400 -74.390 -74.380



43.850

43.840

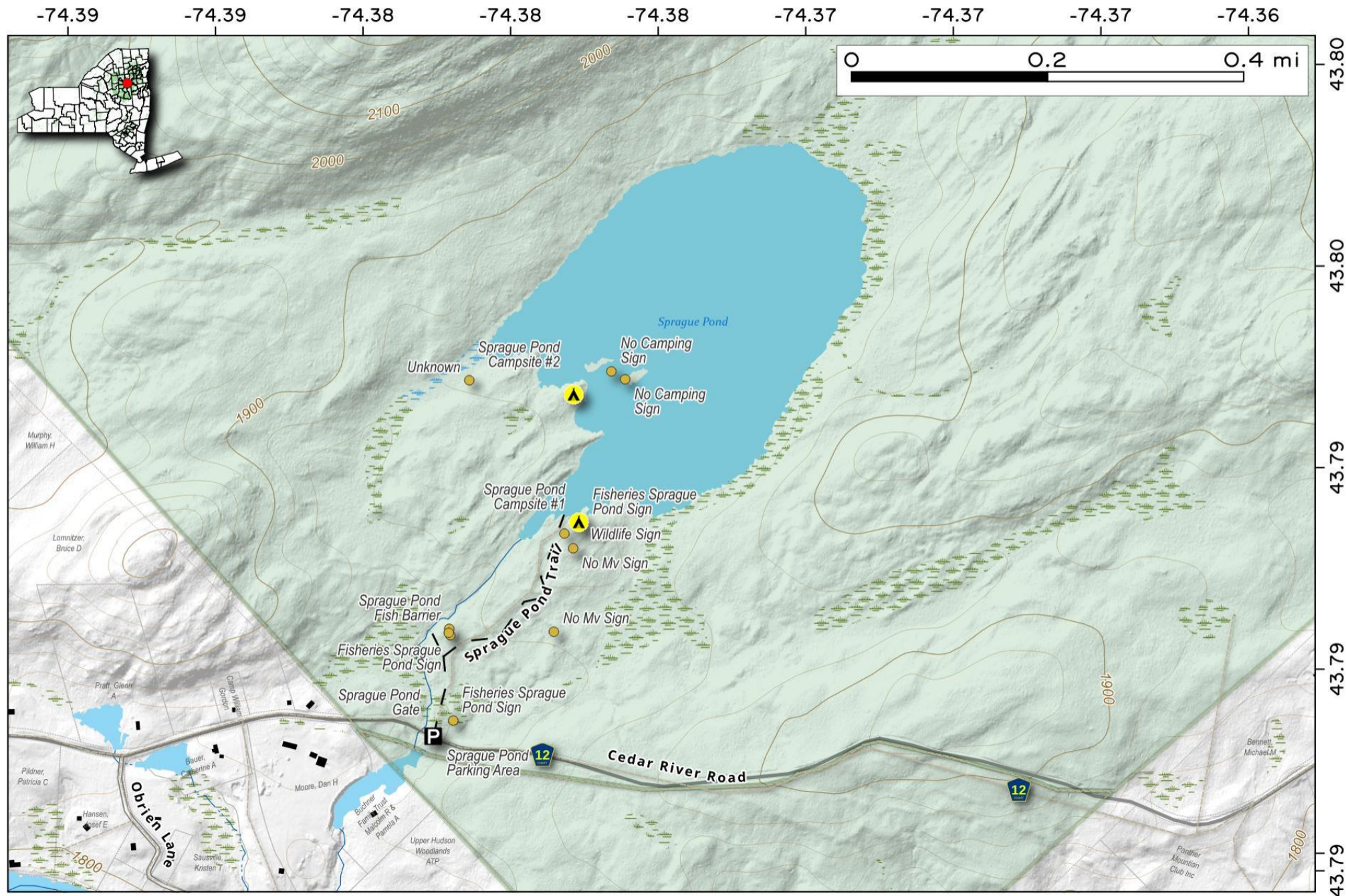
43.830

43.820

Sprague Pond. Located a quarter mile north of Cedar River Road, about half way to Cedar River Flow at Moose River Plains, is the trail head for Sprague Pond. It's a short hike a quarter mile north of the road, along it's outlet creek to a modestly sized, swampy pond. Campsites along the pond are very informal, and lightly used.



Map created by Andy Arthur on 4/4/2025 in QGIS 3.34.15-Prizren. Contains US Forest Service Base Map, NYS DEC data with additional campsites added by Andy. More maps at andyarthur.org.

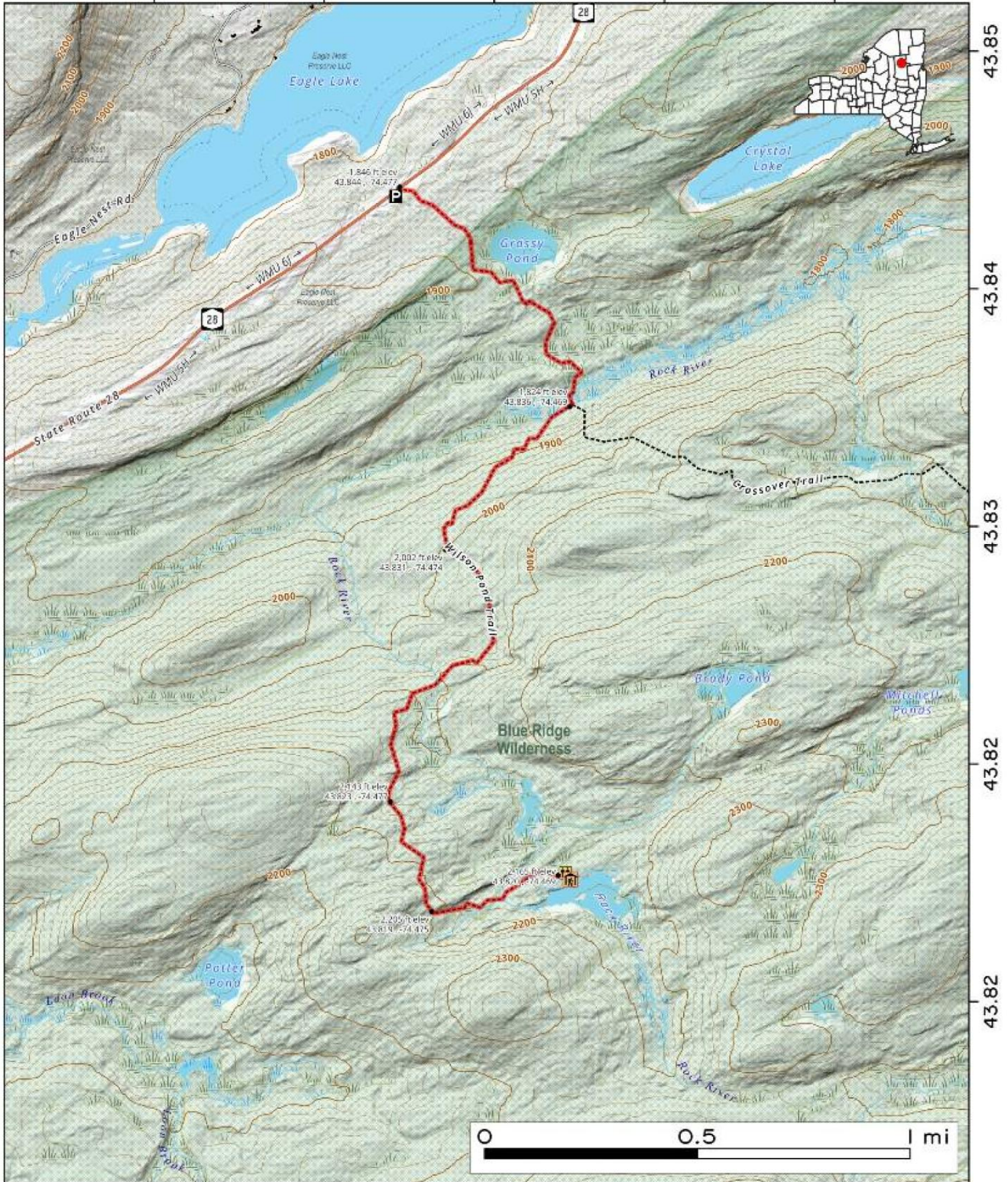


The **Wilson Pond Trail** is a 5.6-mile out-and-back trail near Blue Mountain Lake. It leads hikers past Grassy Pond before climbing toward Wilson Pond, a scenic pond with a lean-to. The route is considered moderately and takes an average of 2 to 2.5 hours to complete.

Map created by Andy Arthur on 10/24/2025 in QGIS 3.44.3-Solothurn. Contains NYS GIS and DEC data with additional campsites added by Andy. More maps at andyarthur.org.



-74.49 -74.48 -74.47 -74.46 -74.46



43.85

43.84

43.83

43.82

43.82

0 0.5 1 mi