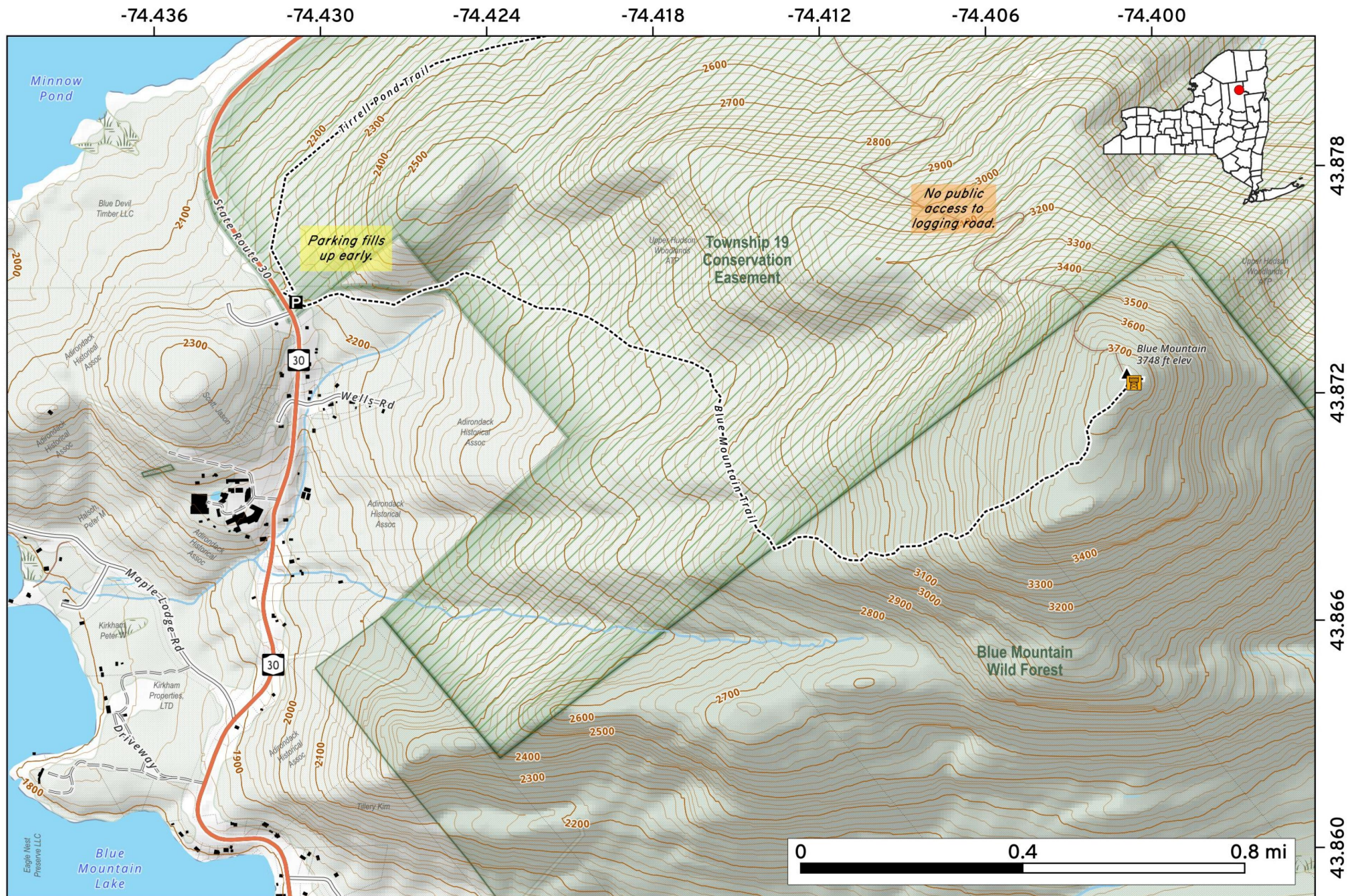


The **Blue Mountain Firetower** trail is 3 miles with a 1,450 ascent along a heavily worn trail with views of Blue Mountain Lake, Lake Durant, and the High Peaks on a clear day. The parking area is about a 1/2 mile north of the Adirondack Museum.



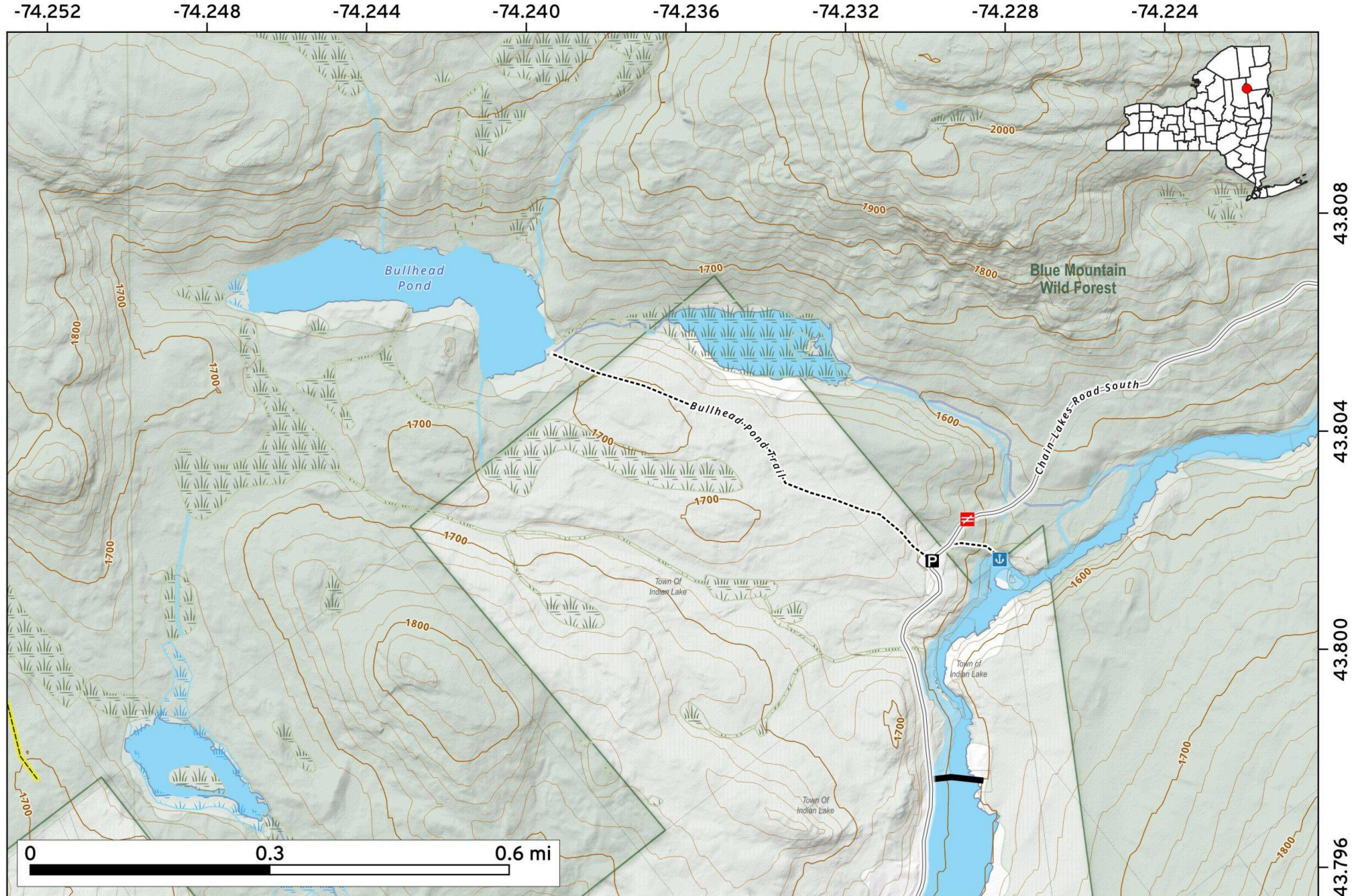
Map created by Andy Arthur on 6/5/2026 in QGIS 3.44.10-Solothurn. Data: NYS GIS and NYS DEC. More at [andyarthur.org](http://andyarthur.org)



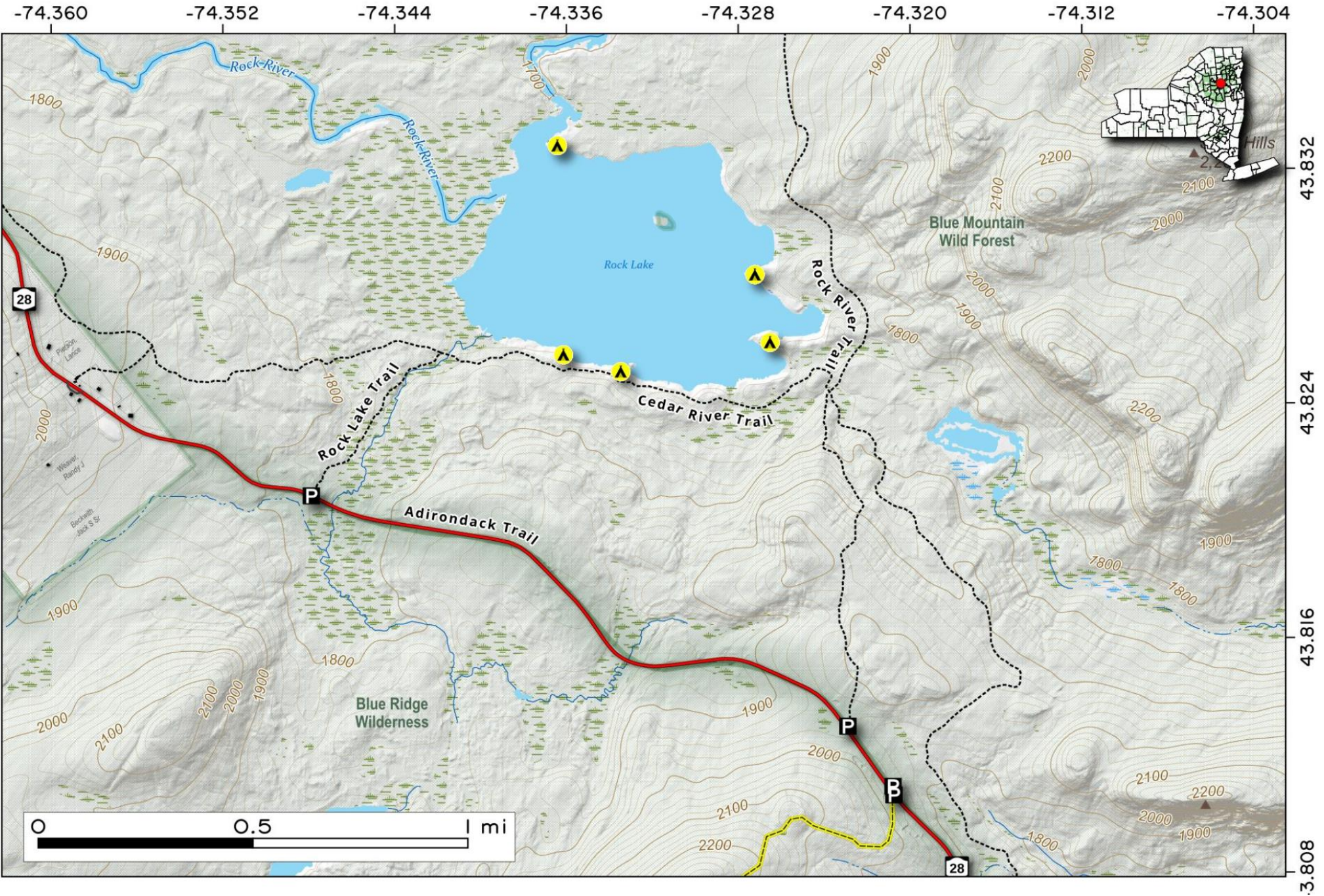
**Bullhead Pond** is off Chain Lake Road before the gate and dam on Adirondack Lake. It is an easy, short 1.2-mile round-trip hike. The path follows an old wood road that is mostly wide, flat, and well-maintained. The final 100 feet features a steep descent straight down to the shoreline, which can be slick during wet weather or winter conditions. The pond is surrounded by a dense forest of tamaracks, which turn a vibrant, spectacular gold late every autumn.



Map created by Andy Arthur on 6/5/2026 in QGIS 3.44.10-Solothurn. Data: NYS GIS and NYS DEC. More at [andyarthur.org](http://andyarthur.org)



**Rock Lake**. A large 3,000 acre lake located about 3/4 mile north of NY 28 between Indian Lake and Blue Mountain Lake.  
Map created by Andy Arthur on 7/1/2025 in QGIS 3.34.15-Prizren. Contains US Forest Service Base Map, NYS DEC data with additional campsites added by Andy. More maps at [andyarthur.org](http://andyarthur.org).



The **Tirrell Pond Trail** starts at the Blue Mountain parking lot on Route 28N/30. It follows an old logging road, contours smoothly around the base of the mountain, and then drops down to the water. This is a 6.4-mile round-trip hike with roughly 700 feet of elevation gain.

Map created by Andy Arthur on 6/5/2026 in QGIS 3.44.10-Solothurn. Data: NYS GIS and NYS DEC. More at [andyarthur.org](http://andyarthur.org)

