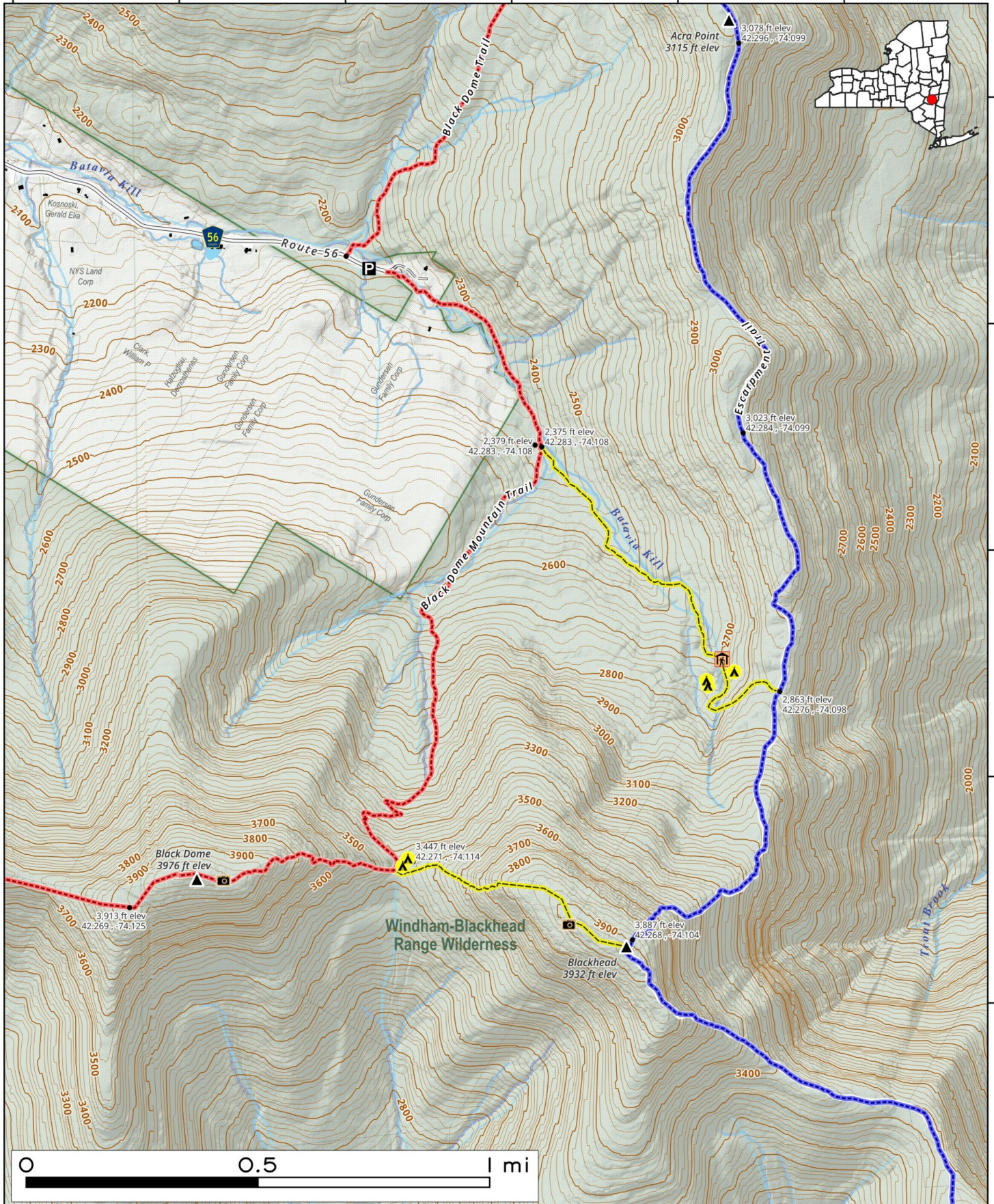


The **Blackhead Loop Trail** is a rigorous 5-mile trek from the Big Hollow Road trailhead. This challenging circuit features steep rock scrambles and a 1,700-foot elevation gain. While the 3,940-foot summit is wooded, multiple overlooks provide sweeping views of Black Dome and the surrounding Catskill High Peaks.



Map created by Andy Arthur on 2/12/2026 in QGIS 3.44.7-Solothurn. Data: NYS GIS and NYS DEC. More at [andyarthur.org](http://andyarthur.org).

-74.13      -74.12      -74.12      -74.11      -74.10      -74.09



42.29

42.29

42.28

42.27

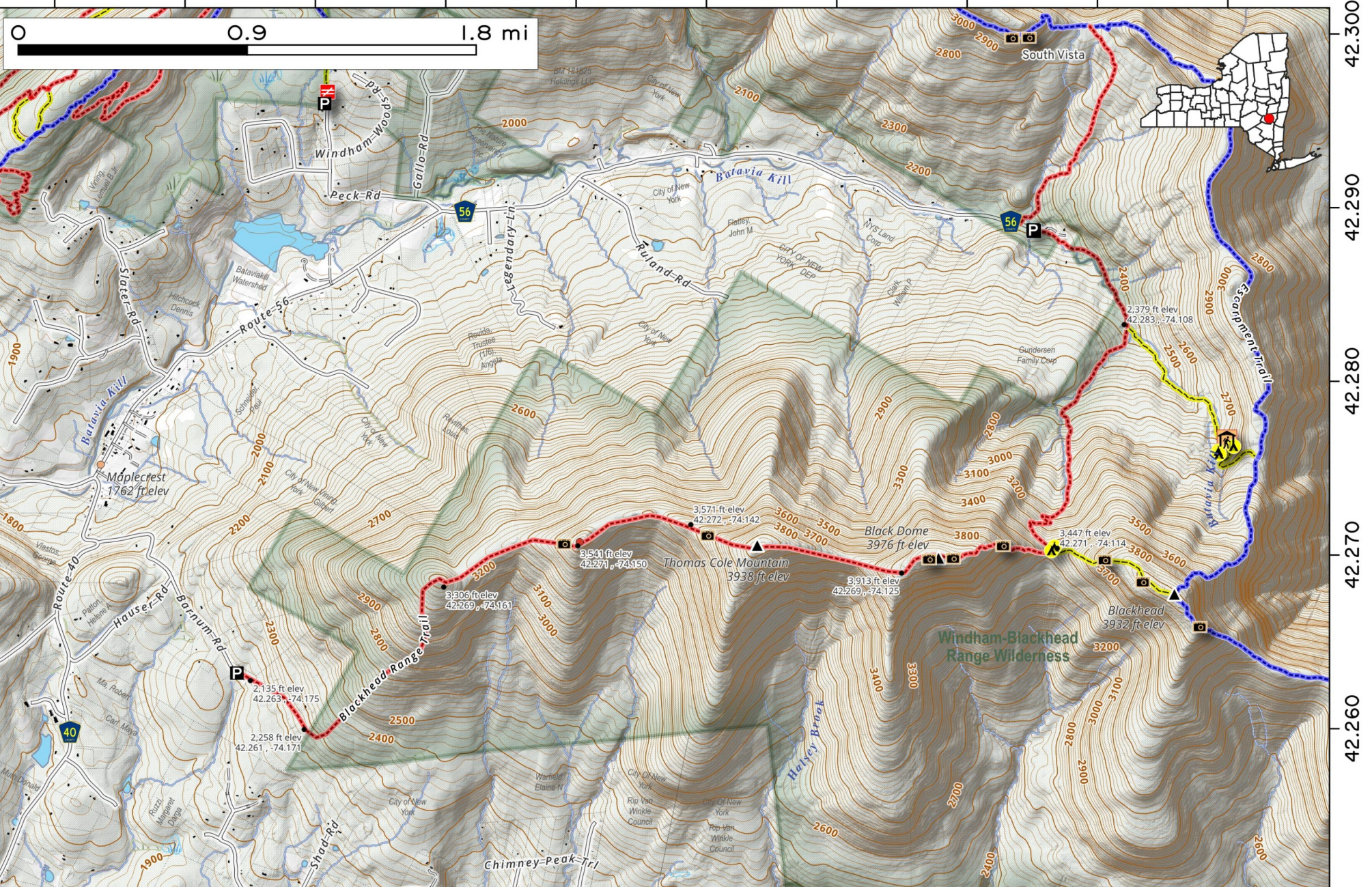
42.27

**Blackhead Mountain Trail.** The full Black Dome Trail from Barnum Road to the Escarpment Trail junction is 7.5 miles one way. A typical loop involving Blackhead, Black Dome, and Thomas Cole mountains can be over 12 miles. The trail is considered hard, involving steep sections and rock scrambles that can be challenging, especially in wet or icy conditions. While some sections are viewless, the far end of the hike, around Blackhead and Black Dome, offers stunning panoramic vistas.

Map created by Andy Arthur on 1/4/2026 in QGIS 3.44.6-Solothurn. Contains NYS GIS and DEC data with additional campsites added by Andy. More maps at [andyarthur.org](http://andyarthur.org).



-74.190    -74.180    -74.170    -74.160    -74.150    -74.140    -74.130    -74.120    -74.110    -74.100



42.300  
42.290  
42.280  
42.270  
42.260