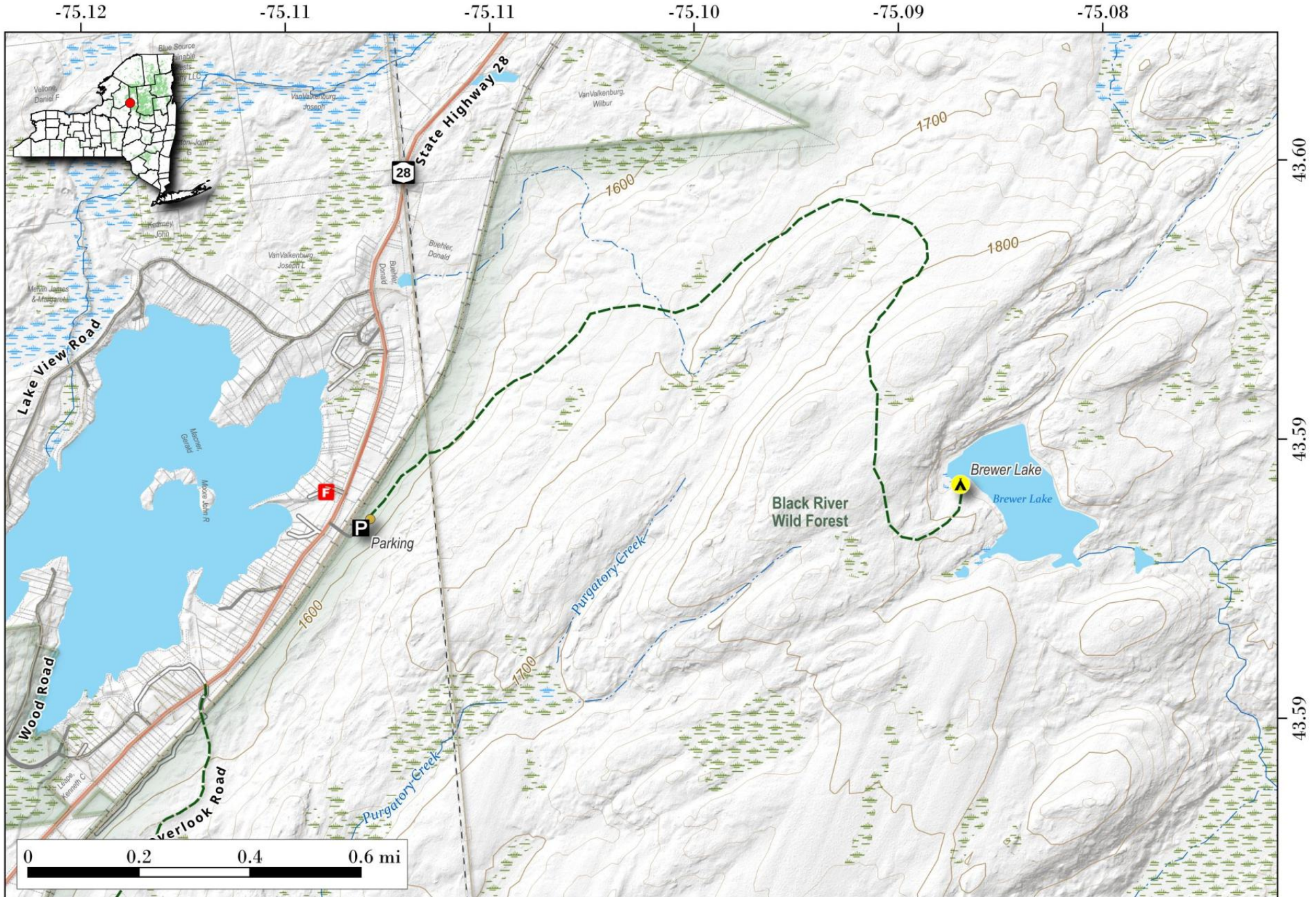


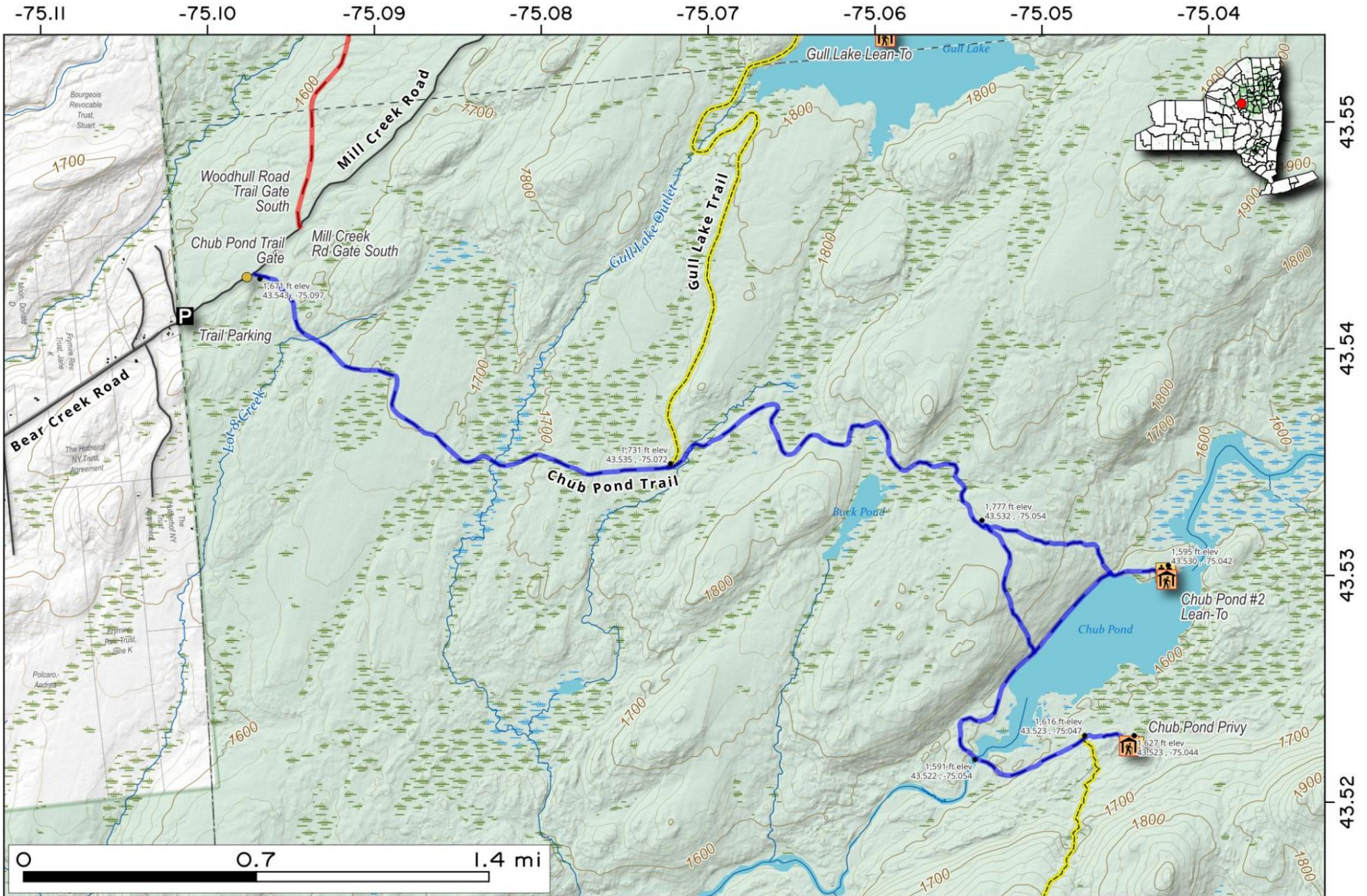
Brewer Lake Trail.

Along NY 28N north of White Lake is the Brewer Lake Trail, 2.0 mile trail that gently climbs a hill back to the pond of that name. Map created by Andy Arthur on 1/6/2025 in QGIS 3.34.14-Prizren. Contains US Forest Service Base Map, NYS DEC Ddata with additional campsites added by Andy. More maps at andyarthur.org.



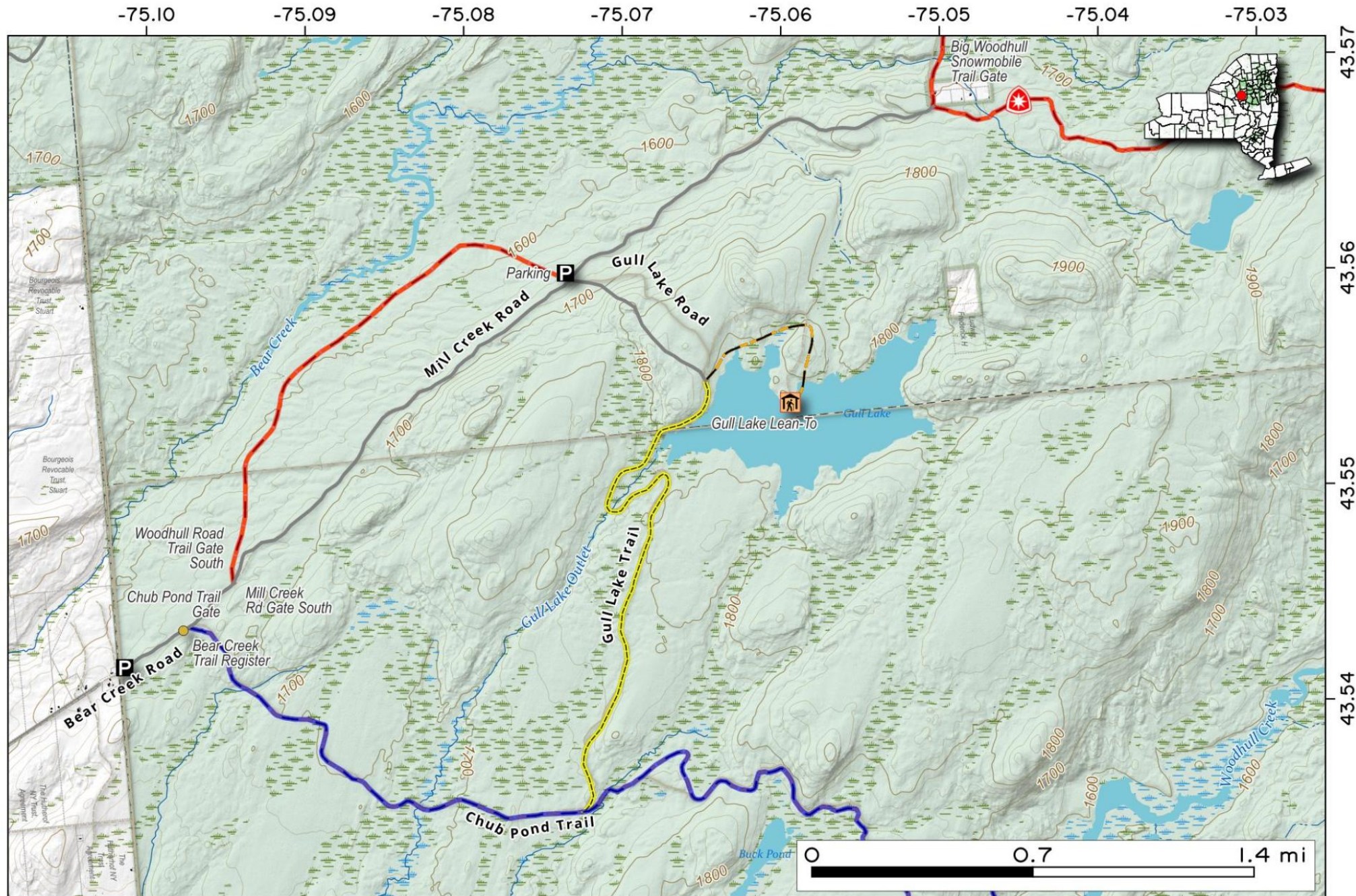
Chub Pond Trail. 5.3 miles back from Bear Creek Road along a sometimes rutted old ATV trail to a pond with two lean-tos, one maintained by a local family as a seasonal hunting camp but open for public use. Trail has blue blazes.

Map created by Andy Arthur on 5/14/2025 in QGIS 3.34.15-Prizren. Contains US Forest Service Base Map, NYS DEC data with additional campsites added by Andy. More maps at andyarthur.org.

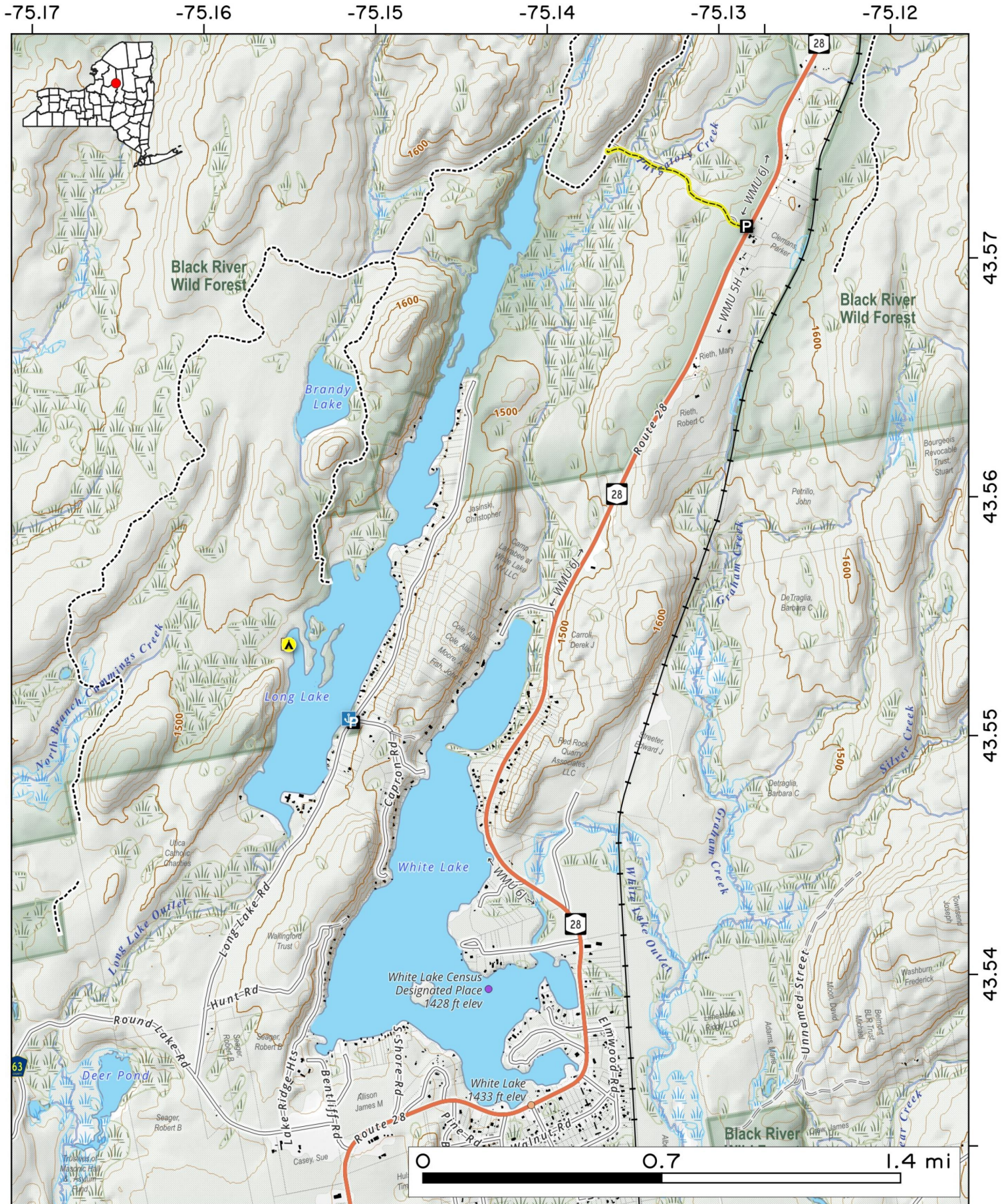


Gulf Lake. Parking at the wild forest boundary, you can hike back 3.5 miles along a rough truck trail to this remote lake. It also can be driven back to in a 4x4 during the summer/fall season.

Map created by Andy Arthur on 3/25/2025 in QGIS 3.34.15-Prizren. Contains US Forest Service Base Map, NYS DEC data with additional campsites added by Andy. More maps at andyarthur.org.



Long Lake in Woodgate. Behind White Lake is Long Lake, a partially developed and wilderness lake in the north-west. There is a designated campsite and several quite coves n the west-side of the lake. Map created by Andy Arthur on 1/9/2026 in QGIS 3.44.6-Solothurn. Contains NYS GIS and DEC data with additional campsites added by Andy. More maps at andyarthur.org.

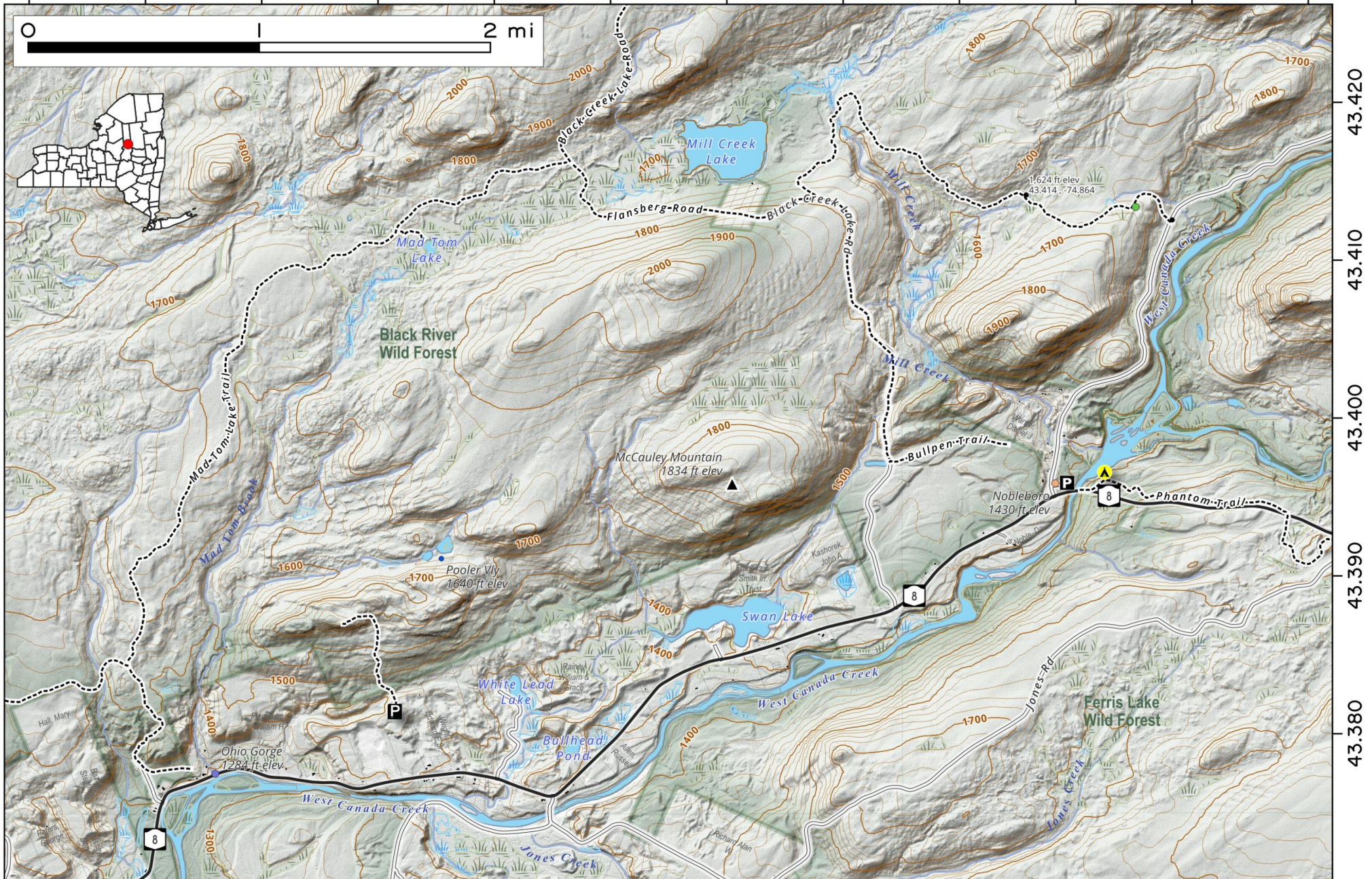


Mad Tom Brook Snowmobile Trail. Runs in the hills above the Mad Tom Brook from NY 8 back to Flansburg Road and past Mill Creek Pond.



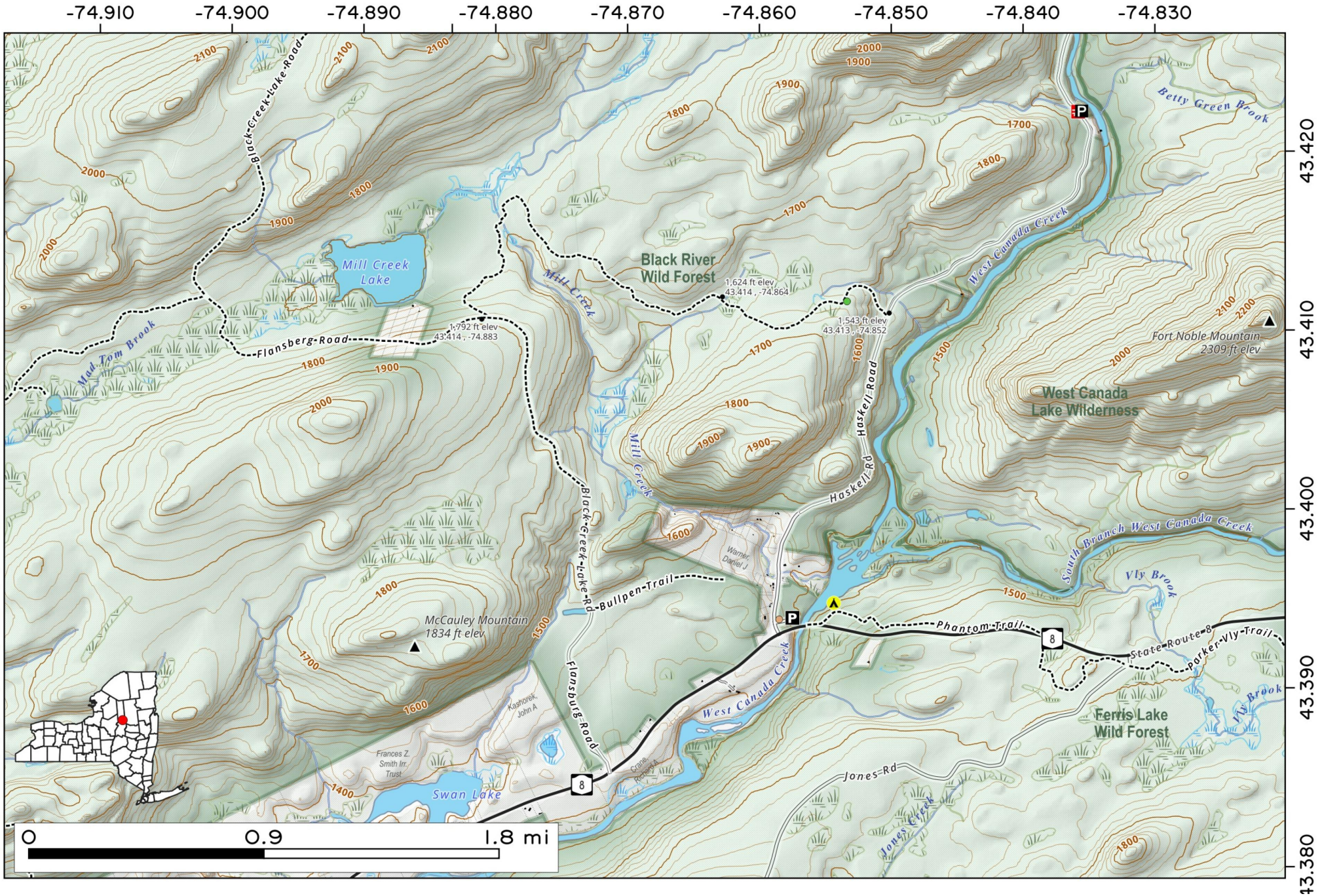
Map created by Andy Arthur on 1/7/2026 in QGIS 3.44.6-Solothurn. Contains NYS GIS and DEC data with additional campsites added by Andy. More maps at andyarthur.org.

-74.950 -74.940 -74.930 -74.920 -74.910 -74.900 -74.890 -74.880 -74.870 -74.860 -74.850 -74.840



The Mill Creek - West Canada Creek Trail runs from Haskell outside of Nobleboro, heading west for 2.5 miles to Flansberg Road. The trail climbs approximately 150 feet, with modest ascents and descents.

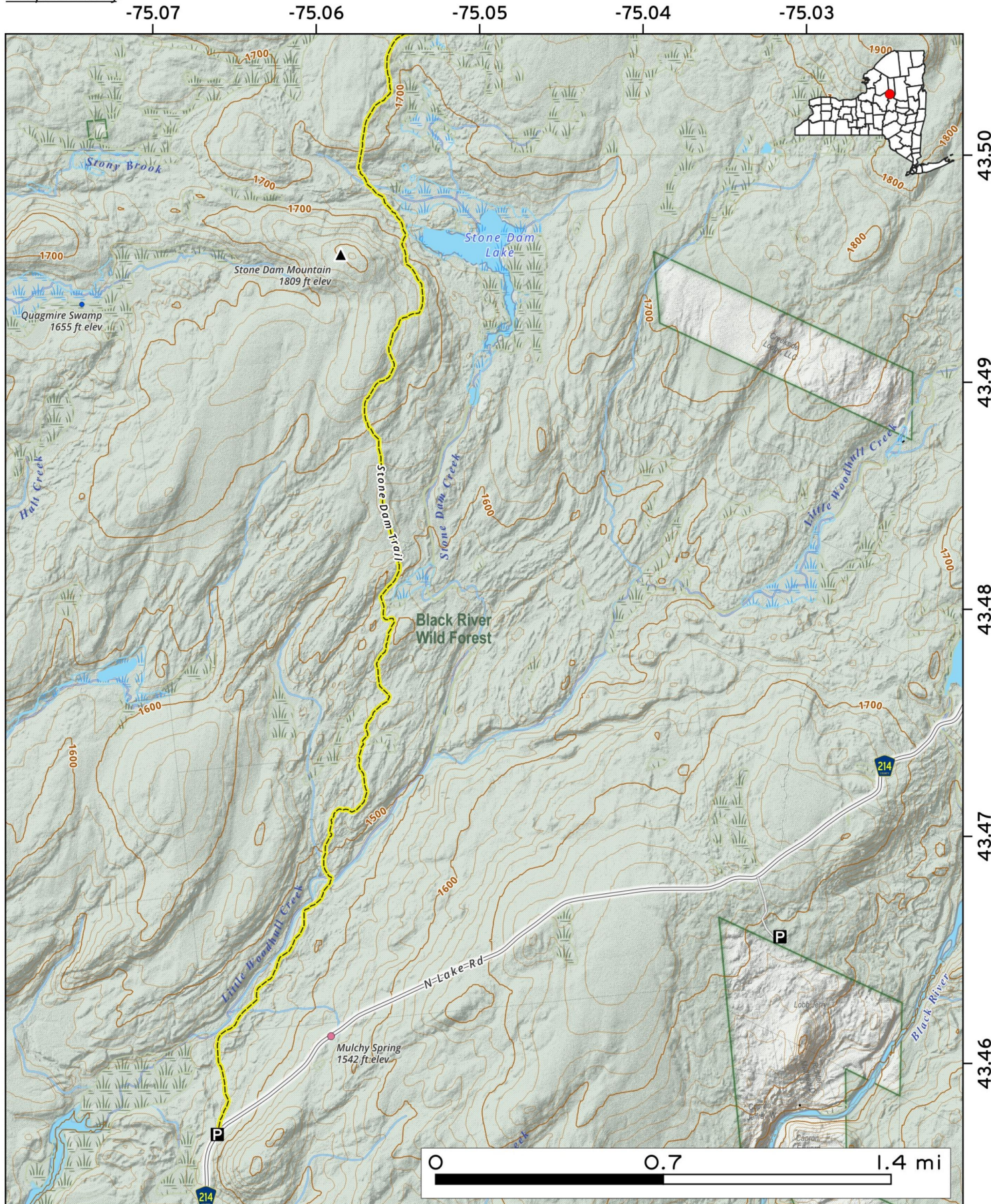
Map created by Andy Arthur on 11/25/2025 in QGIS 3.44.4-Solothurn. Contains NYS GIS and DEC data with additional campsites added by Andy. More maps at andyarthur.org.



Stone Dam Lake is a small lake within the Black River Wild Forest of the Adirondacks. Accessible via a trailhead on North Lake Road, the 3 mile one-way hike features a scenic bridge over Little Woodhull Creek and large glacial boulders.



Map created by Andy Arthur on 2/23/2026 in QGIS 3.44.7-Solothurn. Data: NYS GIS and NYS DEC. More at andyarthur.org.



Stone Dam Trail. You can access the Stone Dam Trailhead via North Lake Road/Route 214. The trail takes you through the forest, crossing several small streams and passing by Stone Dam Lake as you make your way towards Chub Pond. Eventually, the Stone Dam Trail connects with the Chub Pond Trail. This junction marks the path to a lean-to near the pond, providing backpackers with a place to rest.



Map created by Andy Arthur on 3/2/2026 in QGIS 3.44.7-Solothurn. Data: NYS GIS and NYS DEC. More at andyarthur.org.

