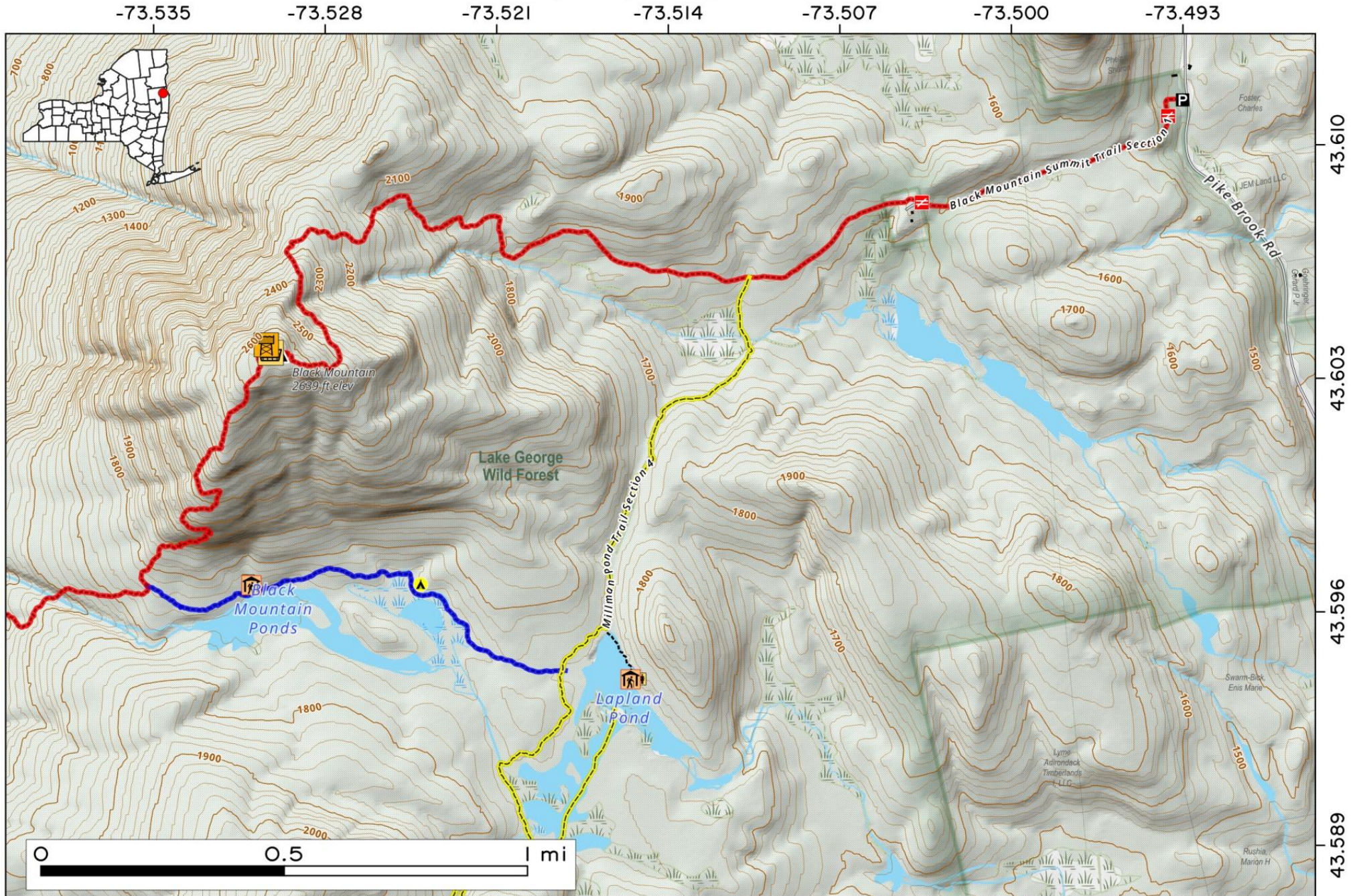


**Black Mountain** is a three mile hike from Pike Brook Road via a snowmobile trail. The snowmobile trail is a nice hike or ski and follows an old woods road to the summit. The summit contains an old firetower that is fenced off for DEC radio equipment, along with a picnic table, outhouse and old ranger's cabin. Views are available near the tower. If you take the steeper trail down the mountain you loop around to Lapland Pond, with a lean-to and outhouse on the shore of that lake. Trail will arrive at Black Mountain Pond with another Lean-To. Blaze color underlays the trail routes on map.

Map created by Andy Arthur on 10/9/2025 in QGIS 3.44.3-Solothurn. Contains NYS GIS and DEC data with additional campsites added by Andy. More maps at [andyarthur.org](http://andyarthur.org).



**Black Mountain** is a three mile hike from Pike Brook Road via a snowmobile trail. The snowmobile trail is a nice hike or 'ski and follows an old woods road'to the summit. The summit contains an old firetower this is fenced off for DEC radio equipment, along with a picnic table, outhouse, and old ranger's cabin. If you take the steeper trail down the mountain you will arrive at Black Mountain Pond with a Lean-To and Outhouse, and loop around to Lapland Pond, an older lean-to. and A outhouse on the shore of the lake. Trail blaze color underlays VNU the trail routes on the map.



Map created by Andy Arthur on 1/15/2026 in QGIS 3.44.6-Solothurn. Contains NYS GIS and DEC data with additional campsites added by Andy. More maps at [andyarthur.org](http://andyarthur.org).

-73.535      -73.528      -73.521      -73.514      -73.507      -73.500      -73.493

