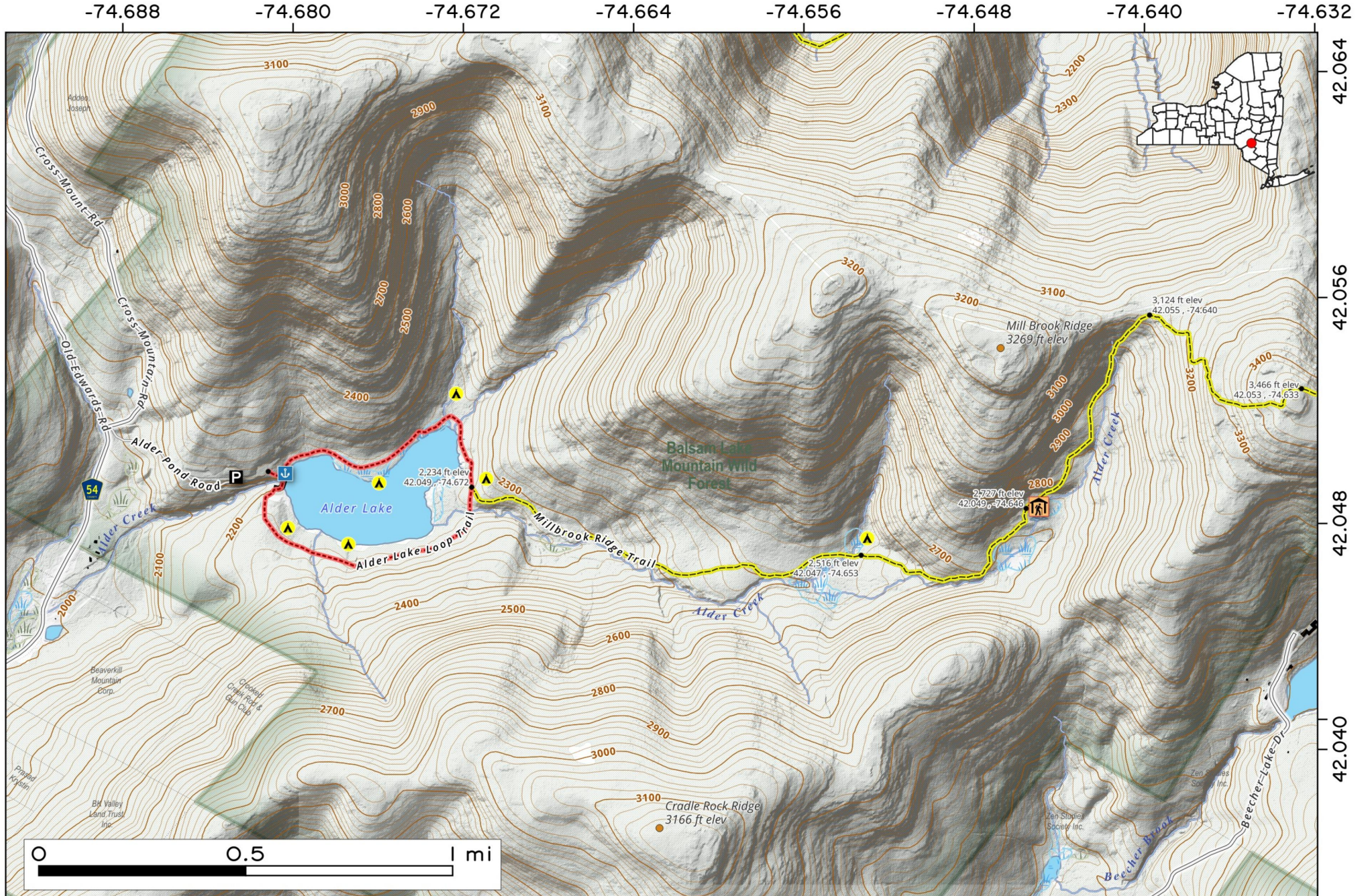


Millbrook Trail *from* Adler Lake to Mill Brook Range. Parking can be found off Cross Mountain Road at Alder Lake Parking Area. There is a grassy hill overlooking Alder Lake, with campsites along the shoreline. From there, the trail follows Alder Creek, then follows a hollow up to Mill Brook Range.



Map created by Andy Arthur on 1/20/2026 in QGIS 3.44.6-Solothurn. Contains NYS GIS and DEC data with additional campsites added by Andy. More maps at andyarthur.org.

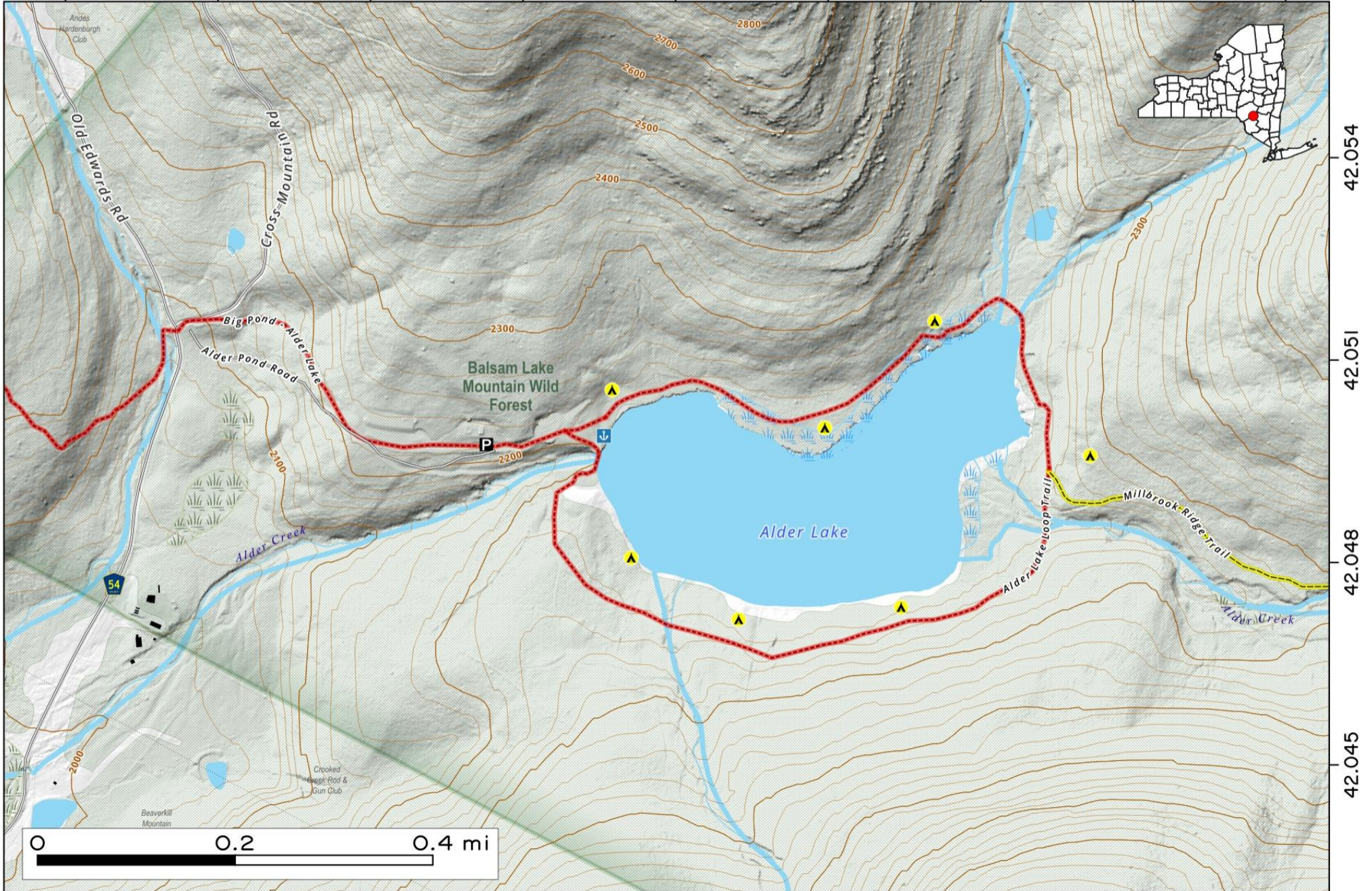


Alder Pond. Scenic pond off Cross Mountain Road north of Turnwood in the Western Catskills. Grassy hillside overlooking the lake and informal beach with several designated campsites along the shoreline.

Map created by Andy Arthur on 10/9/2025 in QGIS 3.44.3-Solothurn. Contains NYS GIS and DEC data with additional campsites added by Andy. More maps at andyarthur.org.



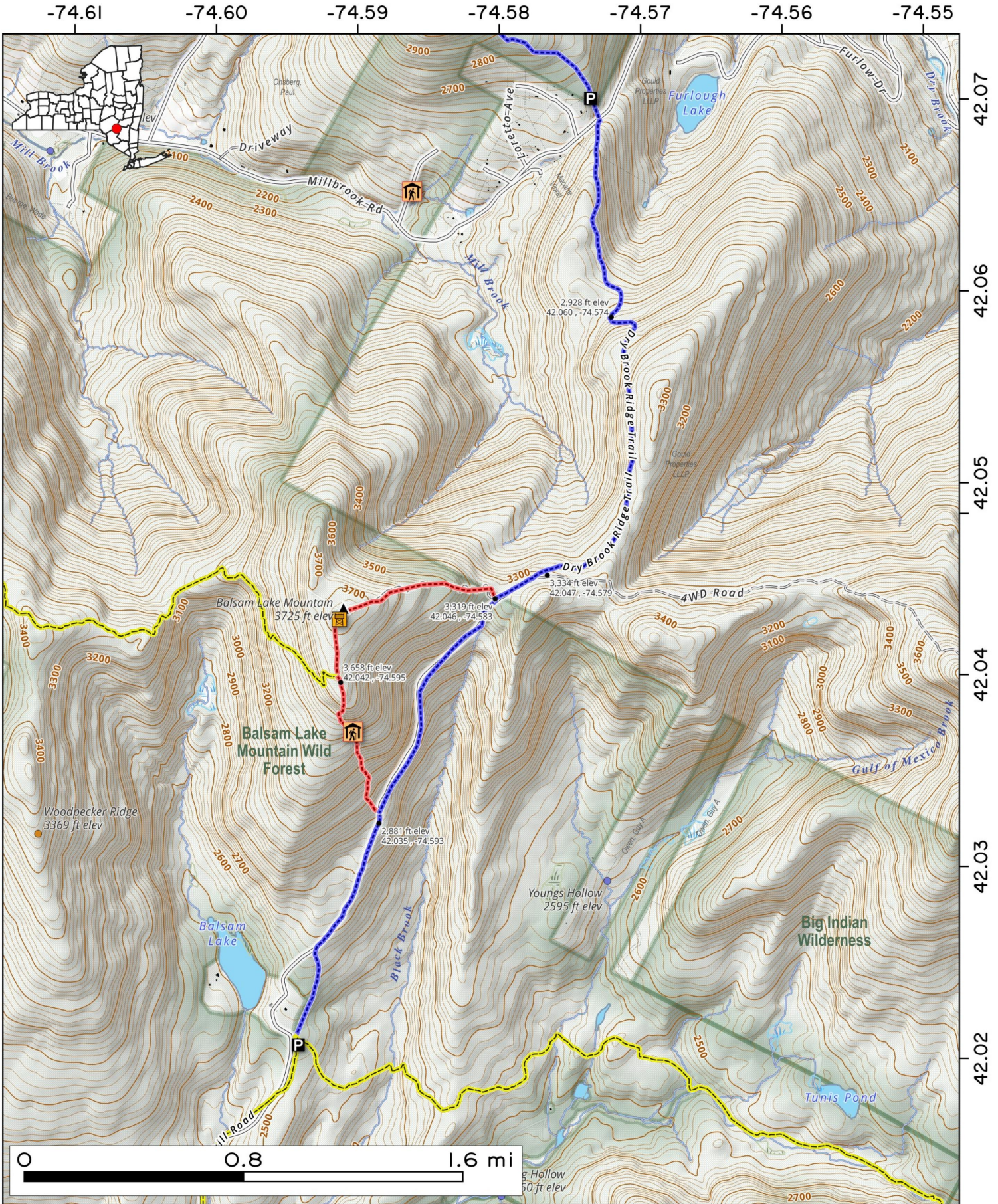
-74.691 -74.688 -74.685 -74.682 -74.679 -74.676 -74.673 -74.670 -74.667



Balsam Lake Mountain Trail (Firetower). Balsam Lake Mountain Firetower and lean-to can be accessed via three ways: Alder Pond via Millbrook Ridge Trail, Dry Brook Ridge Trail via Beaverkill Road and Mill Brook Road following the Dry Brook Ridge Trail via an old woods road. A

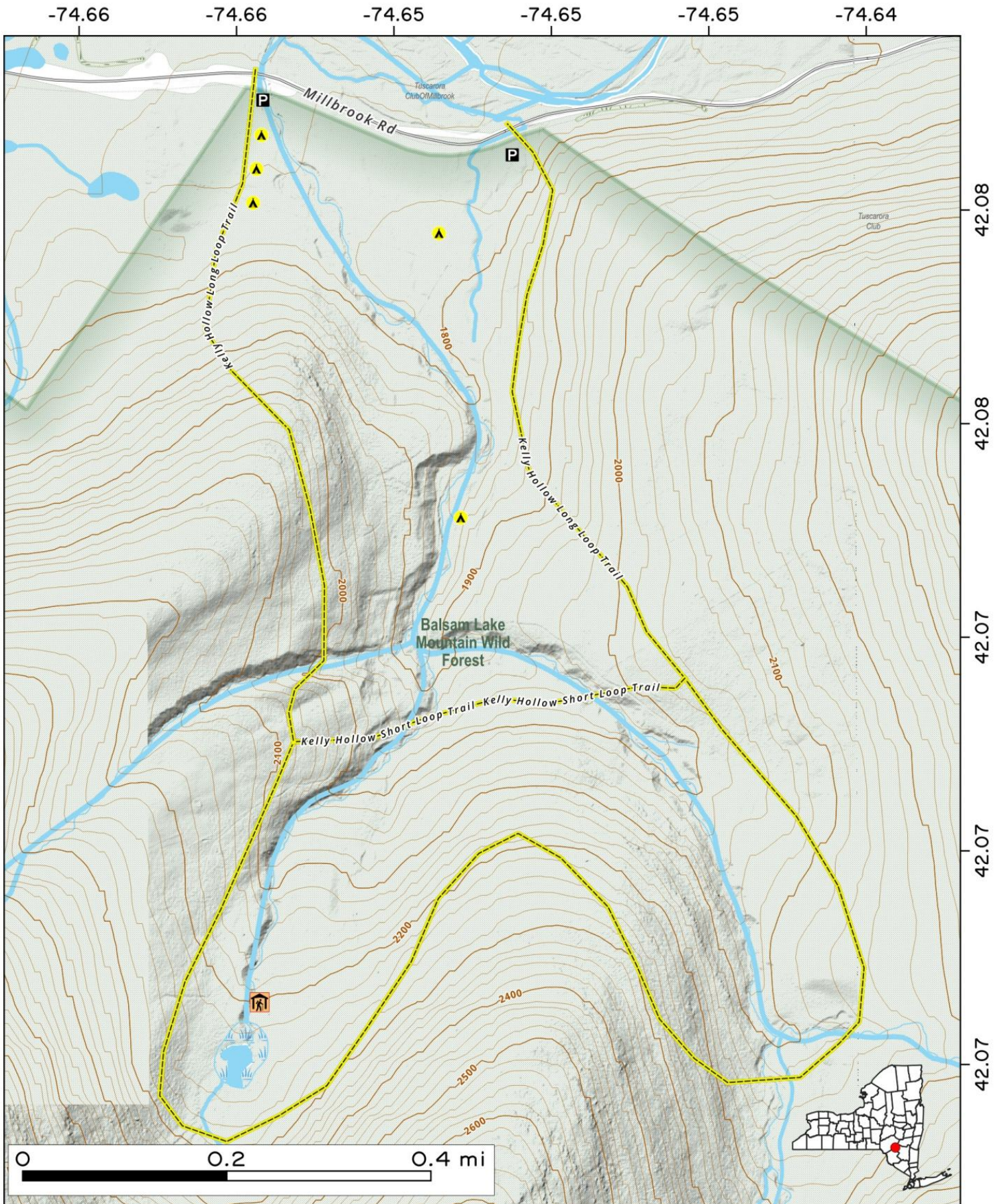


Map created by Andy Arthur on 1/13/2026 in QGIS 3.44.6-Solothurn. Contains NYS GIS and DEC data with additional campsites added by Andy. More maps at andyarthur.org.



Kelly Hollow Loop. Four mile loop around Kelly Hollow with a lean-to a handful of designated campsites and a lean-to on a small pond. Located off Mill Brook Road in the Balsam Lake Mountain Wild Forest.

Map created by Andy Arthur on 10/8/2025 in QGIS 3.44.3-Solothurn. Contains NYS GIS and DEC data with additional campsites added by Andy. More maps at andyarthur.org.

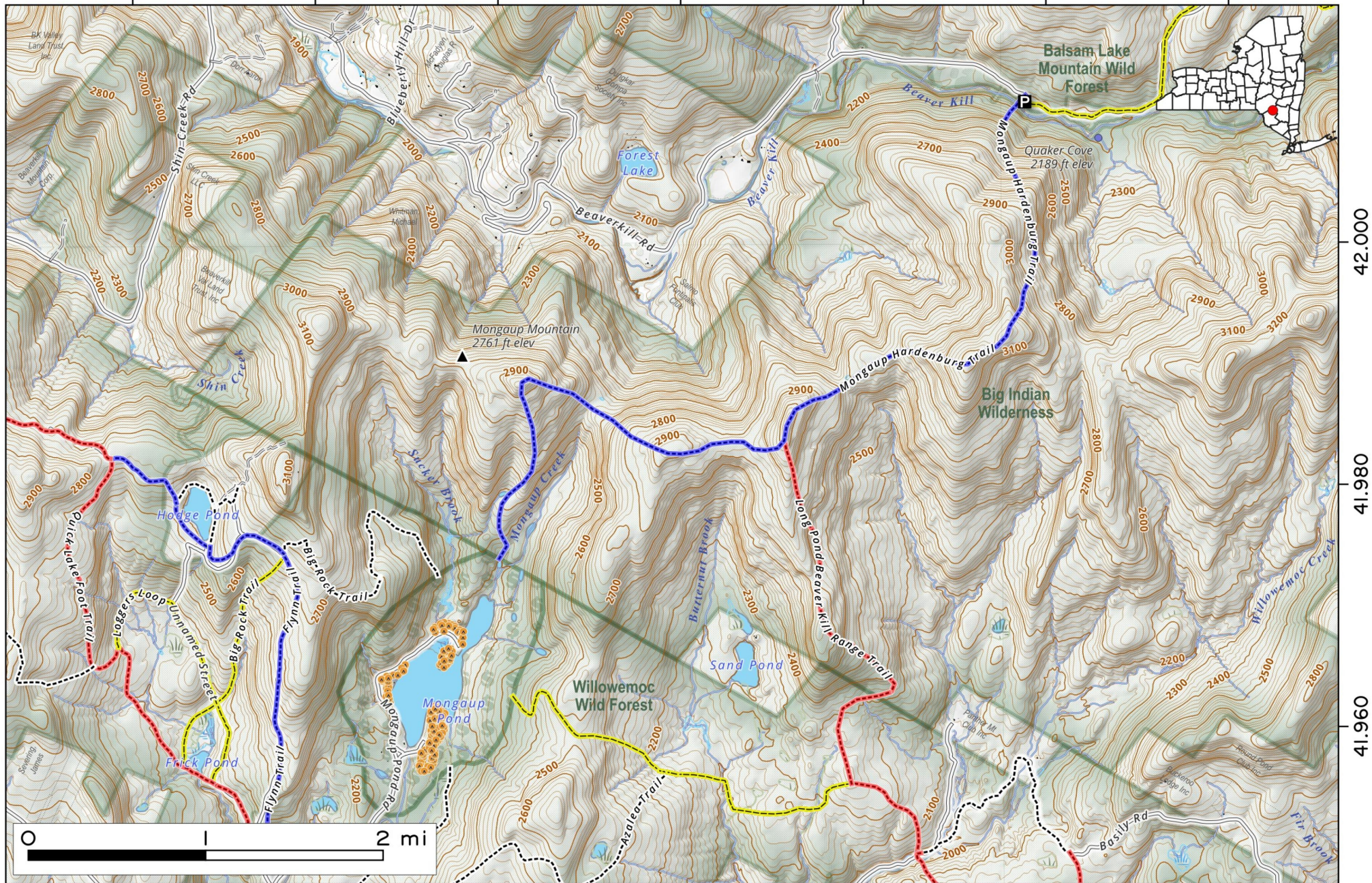


Monagup-Hardenburg Trail. This trail crosses Wilowemoc Mountain and Sand Pond Mountain and connects Beaverkill Road to the the Mongaup Pond State Campground.

Map created by Andy Arthur on 1/13/2026 in QGIS 3.44.6-Solothurn. Contains NYS GIS and DEC data with additional campsites added by Andy. More maps at andyarthur.org.



-74.720 -74.700 -74.680 -74.660 -74.640 -74.620 -74.600



42.000

41.980

41.960