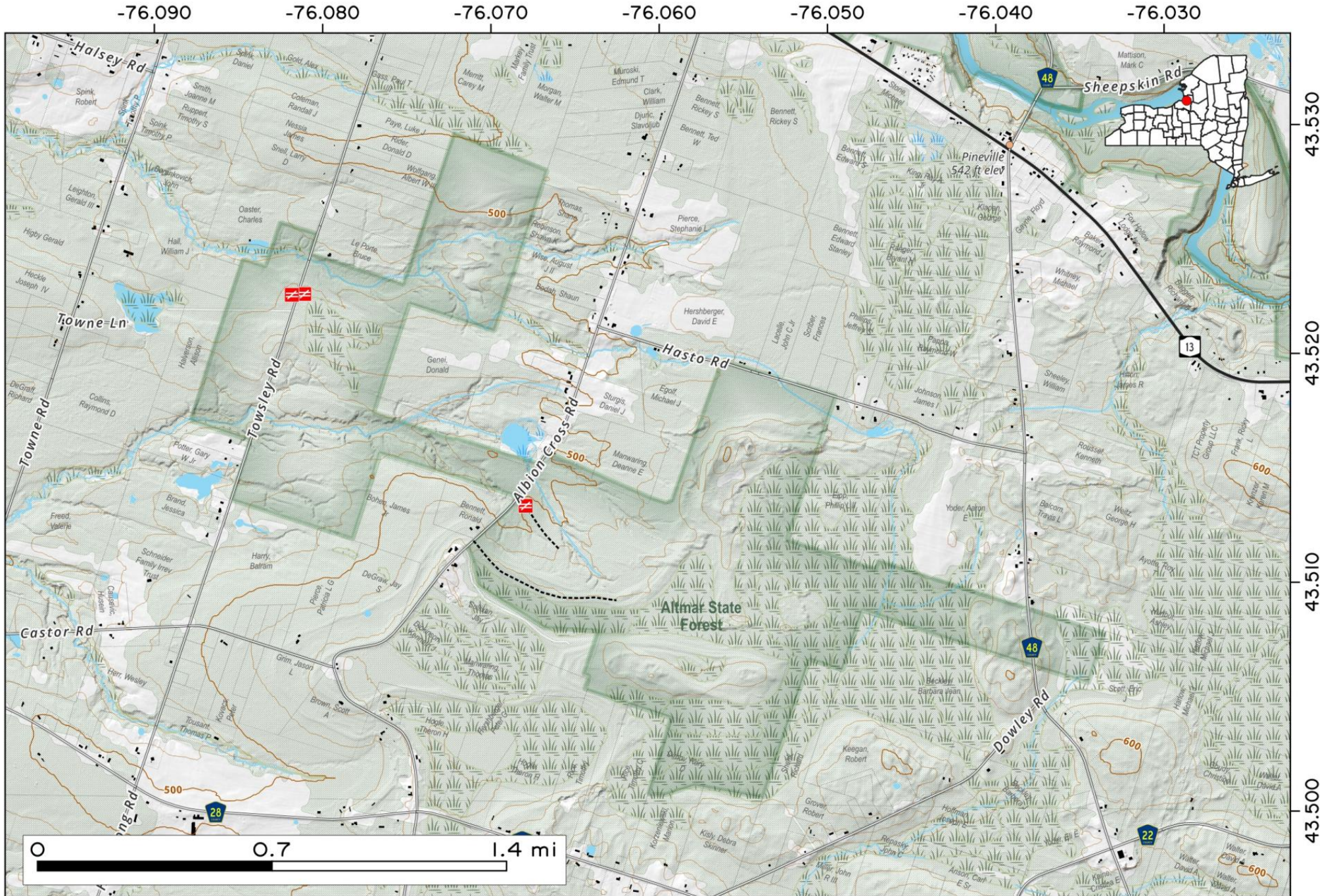


Altmar State Forest: A multi-use forest in Oswego County, NY. Offers primitive camping, hunting, fishing, and trapping. Its 1,100 acres include wetlands, wooded hills, and several small brooks for nature observation and recreation

Map created by Andy Arthur on 10/9/2025 in QGIS 3.44.3-Solothurn. Contains NYS GIS and DEC data with additional campsites added by Andy. More maps at andyarthur.org.

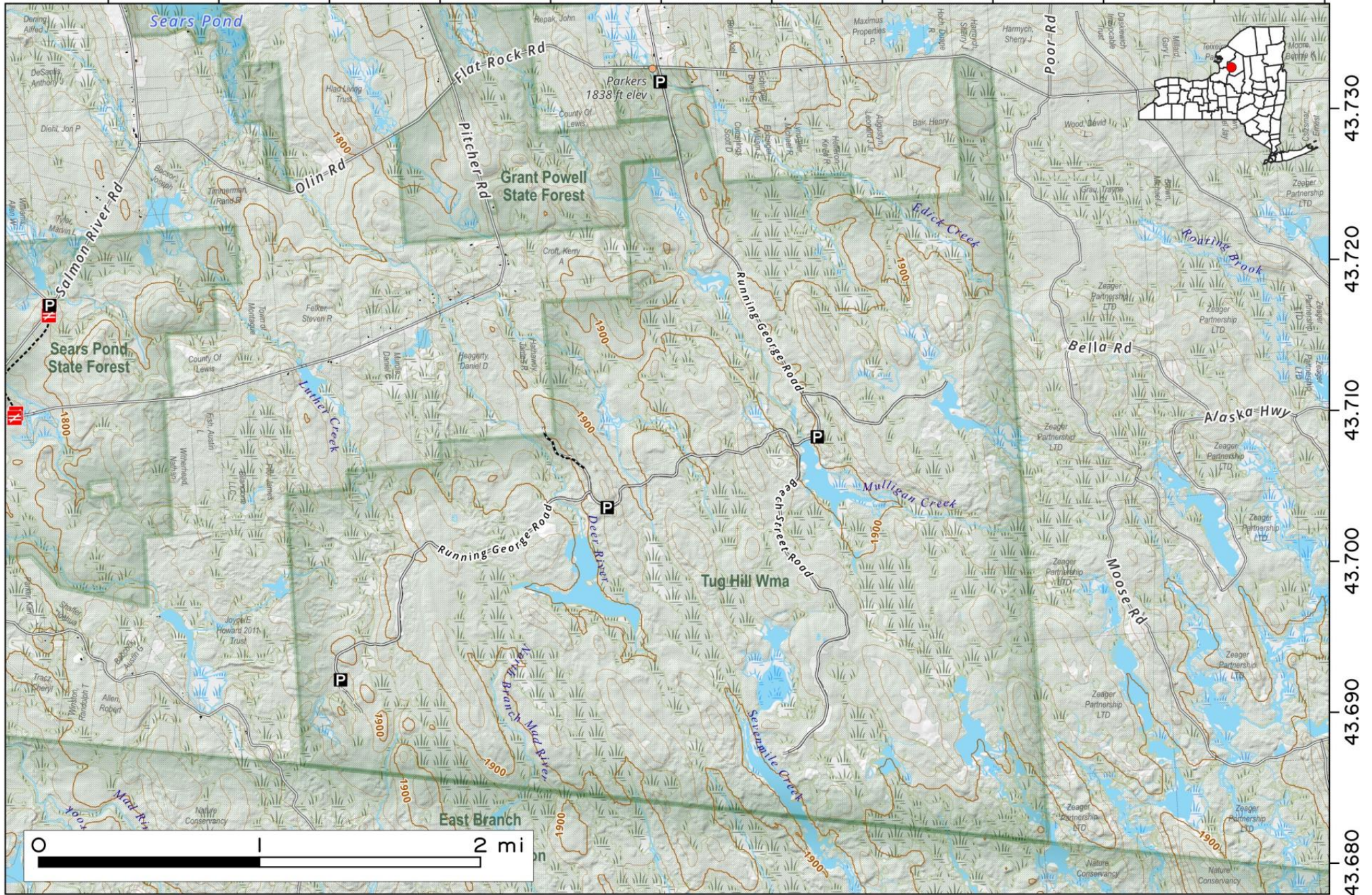


Tug Hill State WMA. A 5,100-acre forested tract on the Tug Hill Plateau in Montague, NY. It features a mix of wetlands and uplands, providing habitat for deer, bear, and other wildlife. Used for hunting, trapping, and fishing, with a series of seasonal-use dirt roads providing access to the interior.



Map created by Andy Arthur on 10/9/2025 in QGIS 3.44.3-Solothurn. Contains NYS GIS and DEC data with additional campsites added by Andy. More maps at andyarthur.org.

-75.720 -75.710 -75.700 -75.690 -75.680 -75.670 -75.660 -75.650 -75.640 -75.630 -75.620 -75.610



43.730
43.720
43.710
43.700
43.690
43.680