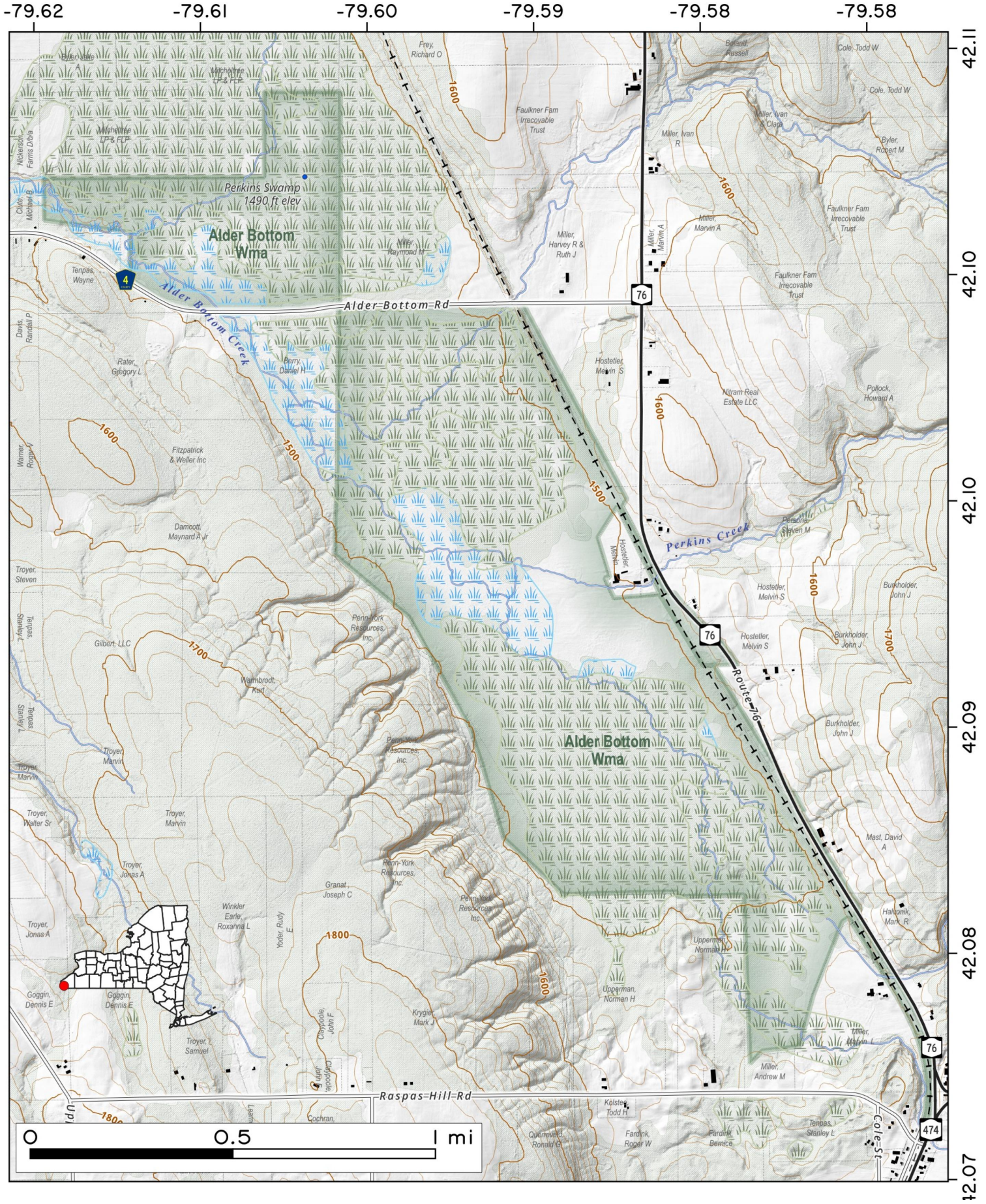


Alder Brook Wildlife Management Area. Located 15 miles west of Jamestown, this area consists of nearly 700 acres of shrub, swamp, emergent marsh, wetlands, open water, as well as approximately 100 acres of brush and grassland.



Map created by Andy Arthur on 1/13/2026 in QGIS 3.44.6-Solothurn. Contains NYS GIS and DEC data with additional campsites added by Andy. More maps at andyarthur.org.



Alder Bottom WMA. Located 15 miles west of Jamestown, this area consists of nearly 700 acres of shrub swamp, wetland, open water, as well as 100 acres of brush and grassland.

Map created by Andy Arthur on 1/21/2026 in QGIS 3.44.6-Solothurn. Contains NYS GIS and DEC data with additional campsites added by Andy. More maps at andyarthur.org.

