

- Adirondack Rail Trail
- P** Parking (Free)
- A** Primitive Campsite (Free)
- A** Developed Campground Site (Paid)

Adirondack Rail Trail

Map by Andy Arthur

October 7, 2025
Free for any use.

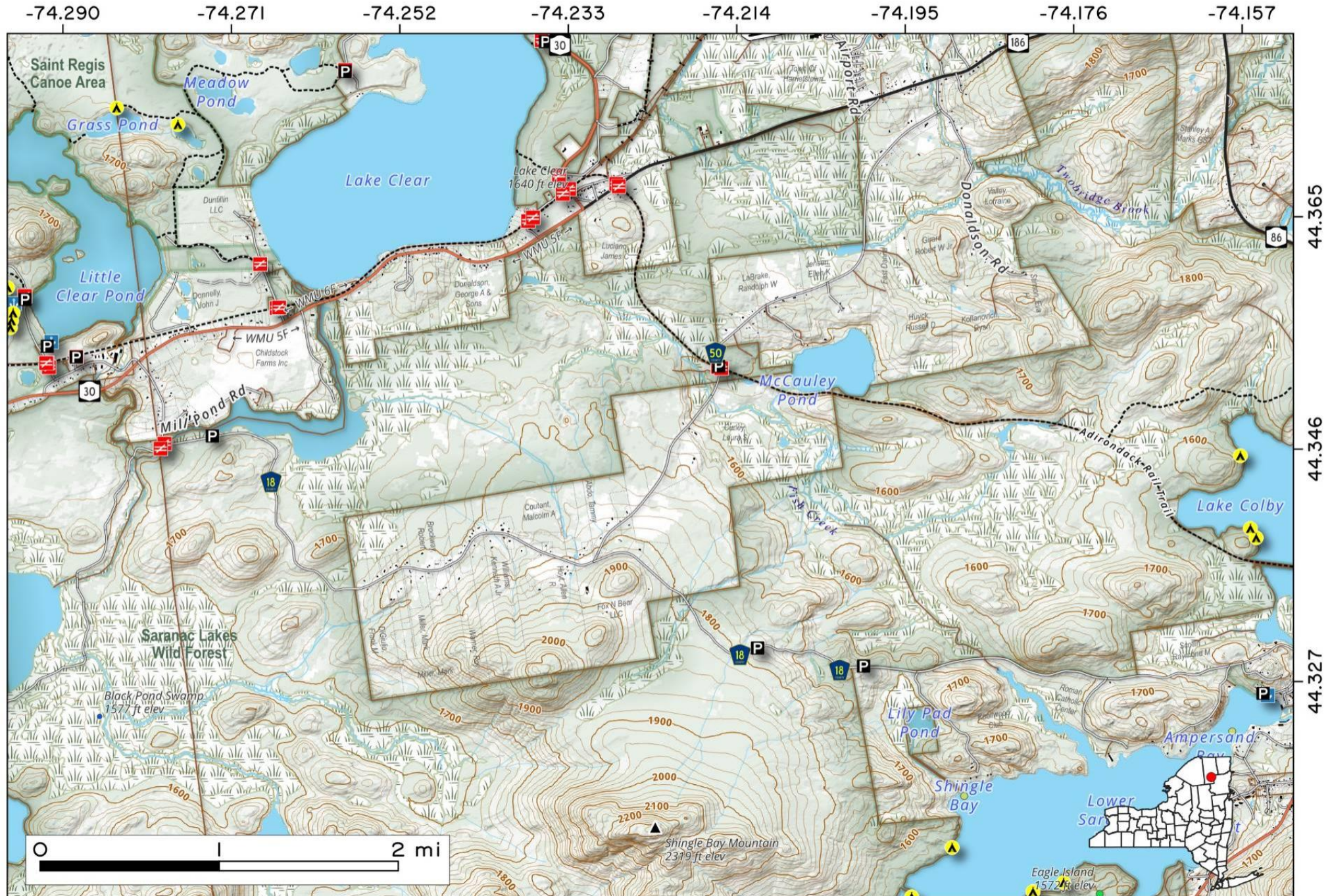
Adirondack Rail Trail. The Adirondack Rail Trail from Lake Colby to Ray Brook is part of a 34-mile multi-use trail that connects Lake Placid, Saranac Lake, and Tupper Lake. This map shows the section where it passes through Saranac Lake and runs south of NY 86 through Ray Brook.

Map created by Andy Arthur on 10/6/2025 in QGIS 3.44.3-Solothurn. Contains NYS GIS and DEC data with additional campsites added by Andy. More maps at andyarthur.org.



Adirondack Rail Trail. The Adirondack Rail Trail from NY 30 to Lake Colby is part of a 34-mile multi-use trail that connects Lake Placid, Saranac Lake, and Tupper Lake. This map shows the section where it passes by Lake Clear, McCauley Pond and Lake Colby.

Map created by Andy Arthur on 10/6/2025 in QGIS 3.44.3-Solothurn. Contains NYS GIS and DEC data with additional campsites added by Andy. More maps at andyarthur.org.

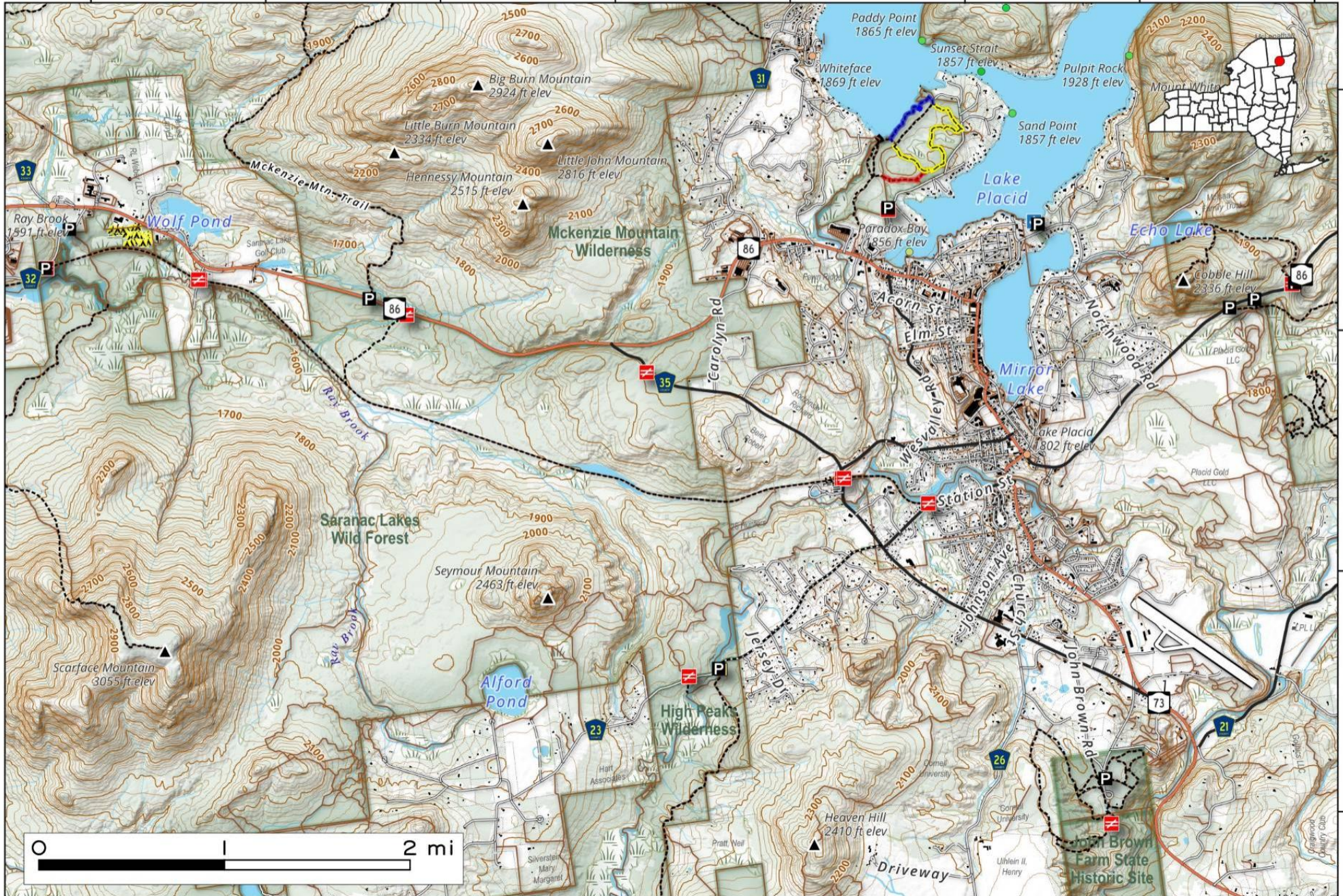


Adirondack Rail Trail. The Adirondack Rail Trail from Ray Brook to Lake Placid is part of a 34-mile multi-use trail that connects Lake Placid, Saranac Lake, and Tupper Lake. This map shows the section where it runs south of NY 86 from Ray Brook, following the waterway of the same name to Lake Placid.



Map created by Andy Arthur on 10/6/2025 in QGIS 3.44.3-Solothurn. Contains NYS GIS and DEC data with additional campsites added by Andy. More maps at andyarthur.org.

-74.081 -74.062 -74.043 -74.024 -74.005 -73.986 -73.967 -73.948



44.308

44.289

44.270

44.251

Adirondack Rail Trail. The Adirondack Rail Trail from Rollins Pond to NY 30 is part of a 34-mile multi-use trail that connects Lake Placid, Saranac Lake, and Tupper Lake. This map shows the section between Rollins Pond and NY 30 where it runs through the St. Regis Canoe Area and Floodwood Road.

Map created by Andy Arthur on 10/6/2025 in QGIS 3.44.3-Solothurn. Contains NYS GIS and DEC data with additional campsites added by Andy. More maps at andyarthur.org.



-74.423 -74.404 -74.385 -74.366 -74.347 -74.328 -74.309 -74.290



44.365
44.346
44.327
44.308

Adirondack Rail Trail. The Adirondack Rail Trail from Tupper Lake to Rollins Pond is part of a 34-mile multi-use trail that connects Lake Placid, Saranac Lake, and Tupper Lake. The section from Floodwood Road to Rollins Pond recently opened, completing the rail trail.



Map created by Andy Arthur on 10/6/2025 in QGIS 3.44.3-Solothurn. Contains NYS GIS and DEC data with additional campsites added by Andy. More maps at andyarthur.org.

