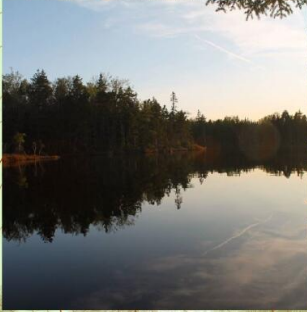
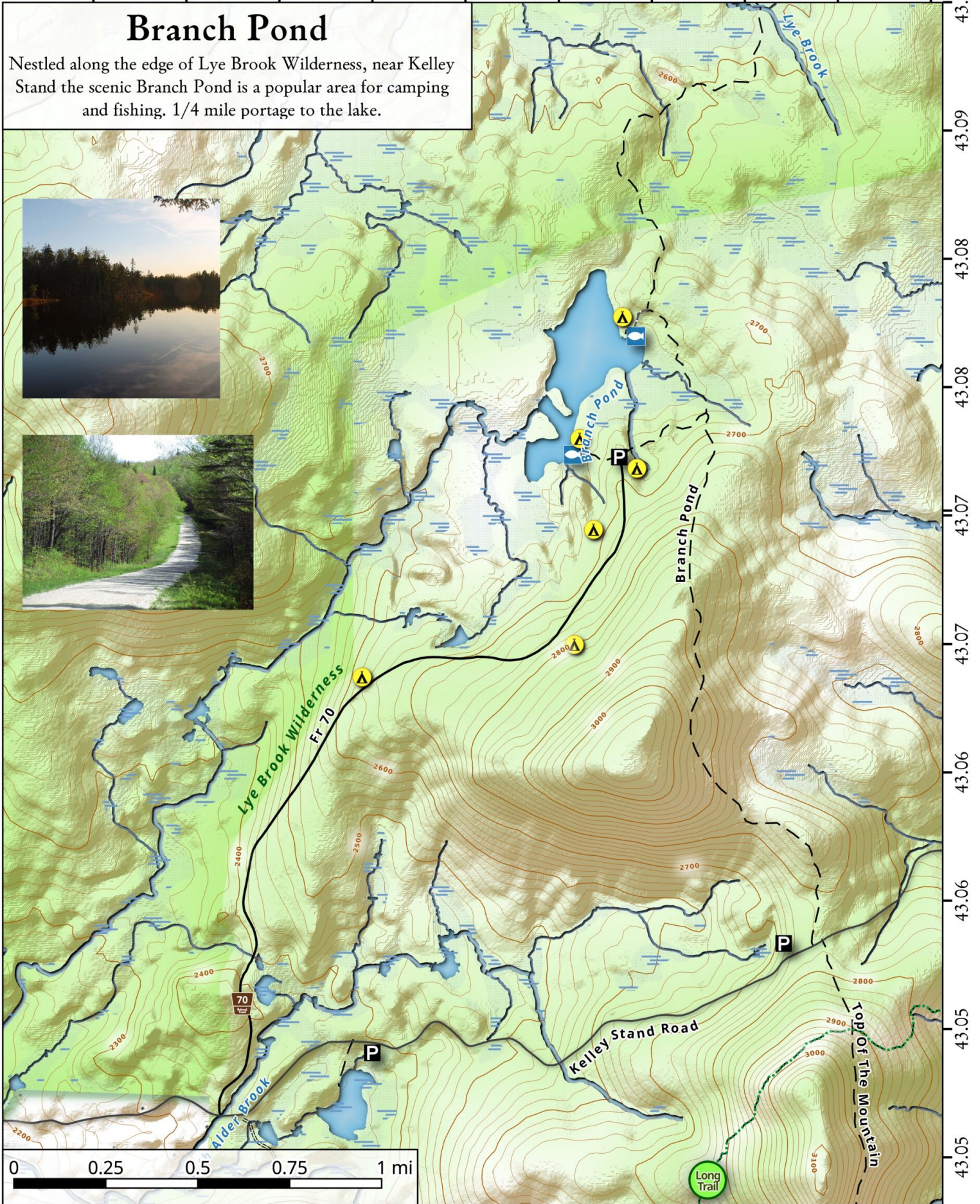


-73.05 -73.04 -73.04 -73.03 -73.03 -73.02 -73.02 -73.01 -73.01 -73.00

# Branch Pond

Nestled along the edge of Lye Brook Wilderness, near Kelley Stand the scenic Branch Pond is a popular area for camping and fishing. 1/4 mile portage to the lake.



43.09  
43.09  
43.08  
43.08  
43.07  
43.07  
43.07  
43.06  
43.06  
43.06  
43.05  
43.05  
43.05