

-74.55

-74.54

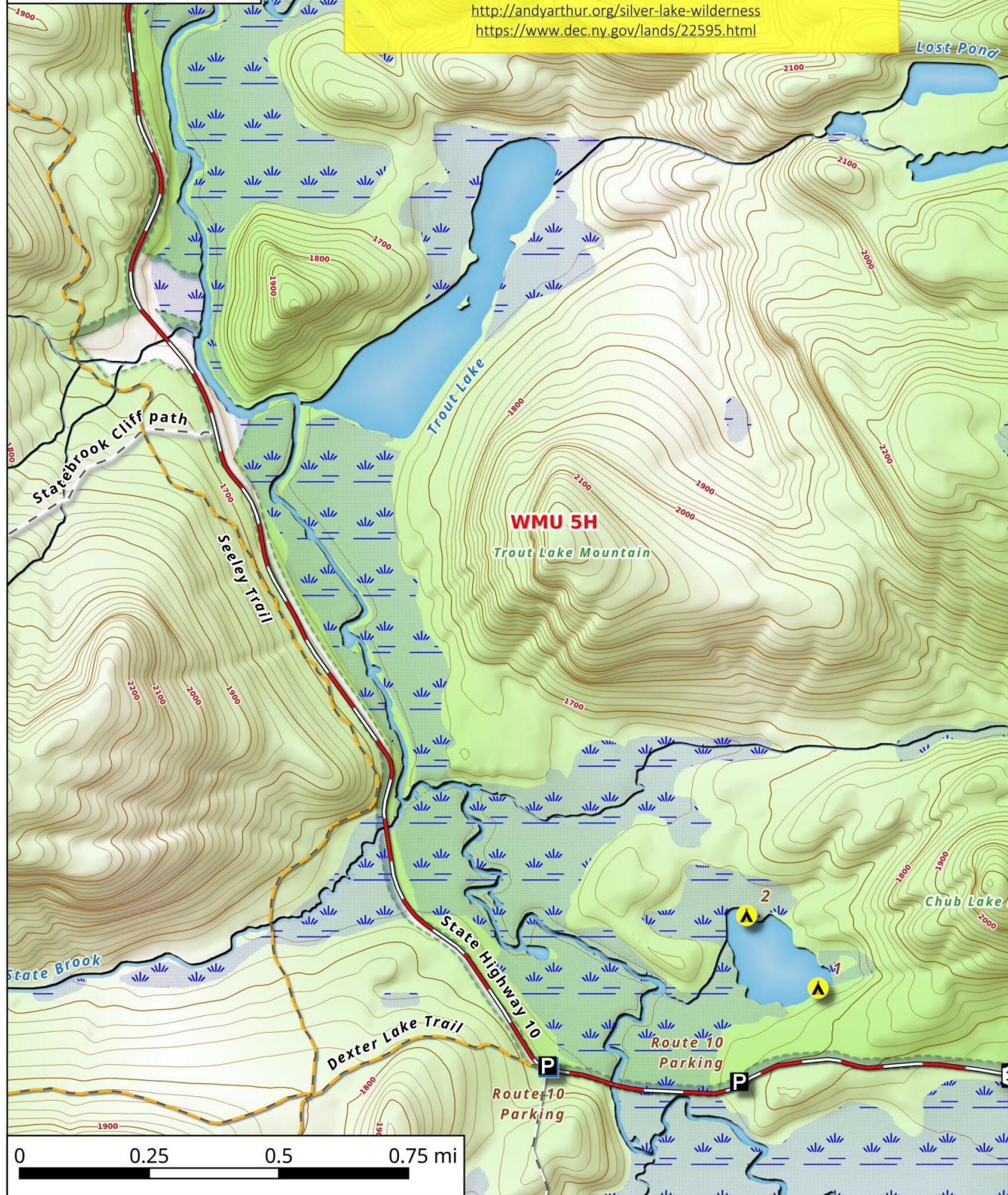
-74.53

Chub and Trout Lake

Arietta - WMU 5H

Accessing Chub and Trout Lake off of the West Branch of the Sacanadaga River should be quite easy on paper, but isn't in practice due to the shallow swampy, over beaver dammed entrance to Chub Lake and the many beaver dams and downed trees along the West Branch. While paddlable, wear a bathing suit and plan to hop out of your kayak or canoe and plan multiple portages.

<http://andyarthur.org/silver-lake-wilderness>
<https://www.dec.ny.gov/lands/22595.html>



Chub and Trout Lake Map, February 24, 2019 by AndyArthur.org in QGIS 3.4.4-Madeira and Python. Street Map is Copyright © OpenStreetMap contributors, CC BY-SA. NYSDEC Data: LiDAR/DEM, Borders, ADK Wetlands, Trails, Assets. True North. 1 inch = 0.3 miles. Projection: NAD83 / UTM zone 18N. Coordinates: 0.01° latitude-longitude (WGS84). Contours are 20 feet.