

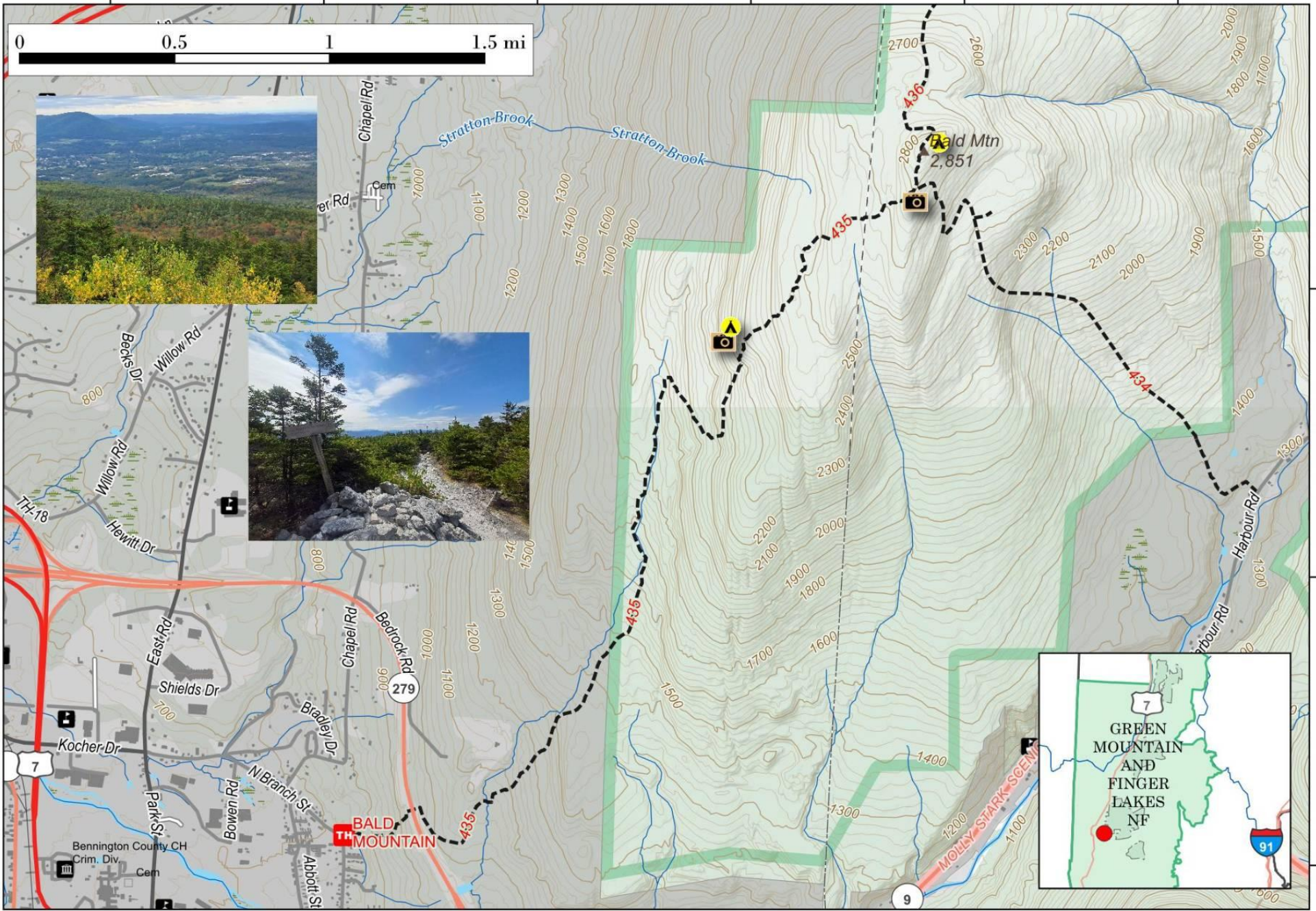
Bald Mountain.

2 1/2 mile hike to first summit overlooking Bennington, and a 4 mile hike to the Bald Mountain summit with views looking south towards Massachusetts. Despite the name, the summit is not fully bald, most views are to the east and south from the top.



Map created by Andy Arthur on 10/23/2024 in QGIS 3.34.11-Prizren. Contains US Forest Service Base Map and DEC data. More maps at andyarthur.org.

-73.20 -73.18 -73.17 -73.15 -73.14 -73.13



42.92
42.90
42.89