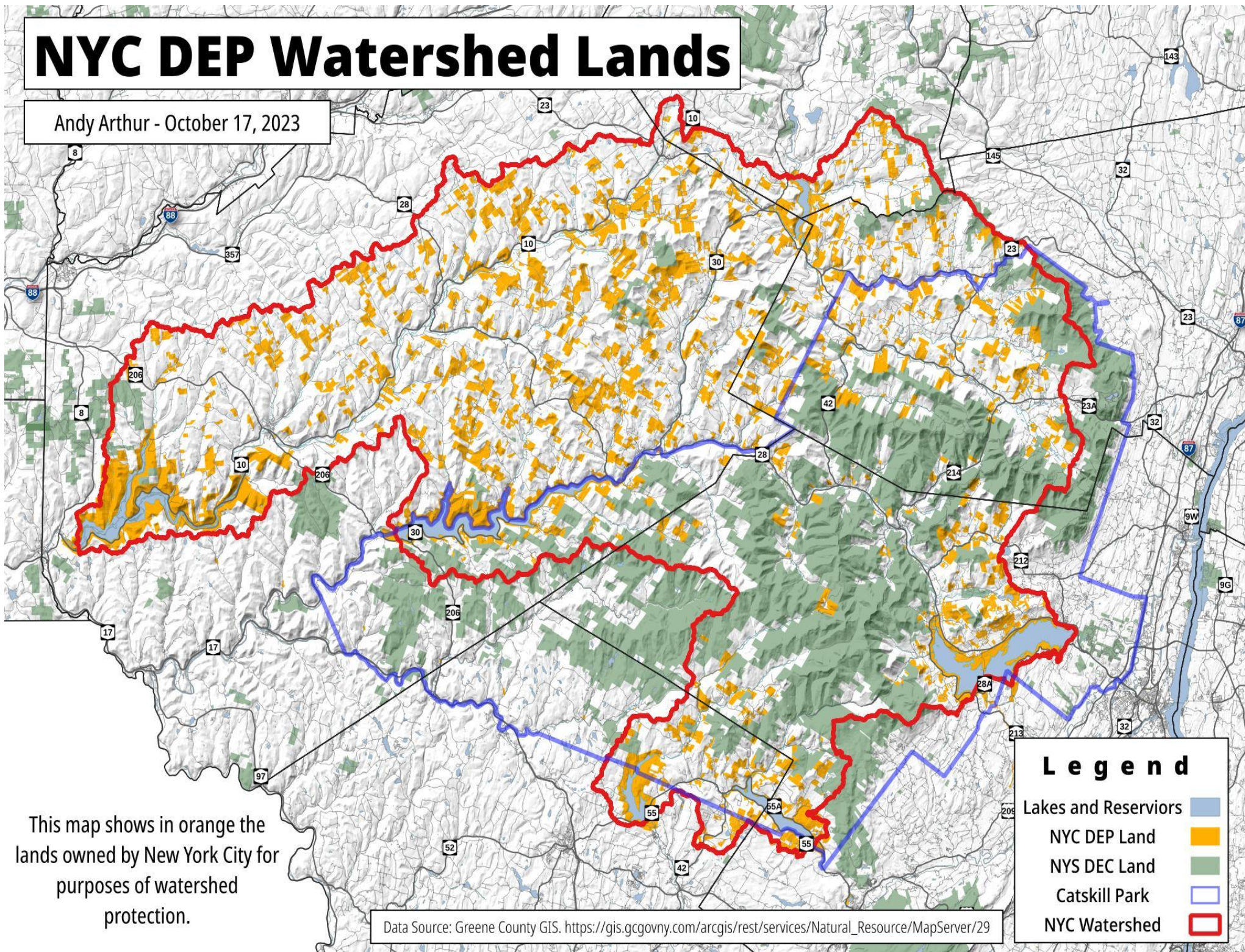


# NYC DEP Watershed Lands

Andy Arthur - October 17, 2023



This map shows in orange the lands owned by New York City for purposes of watershed protection.

Data Source: Greene County GIS. [https://gis.gcgovny.com/arcgis/rest/services/Natural\\_Resource/MapServer/29](https://gis.gcgovny.com/arcgis/rest/services/Natural_Resource/MapServer/29)