

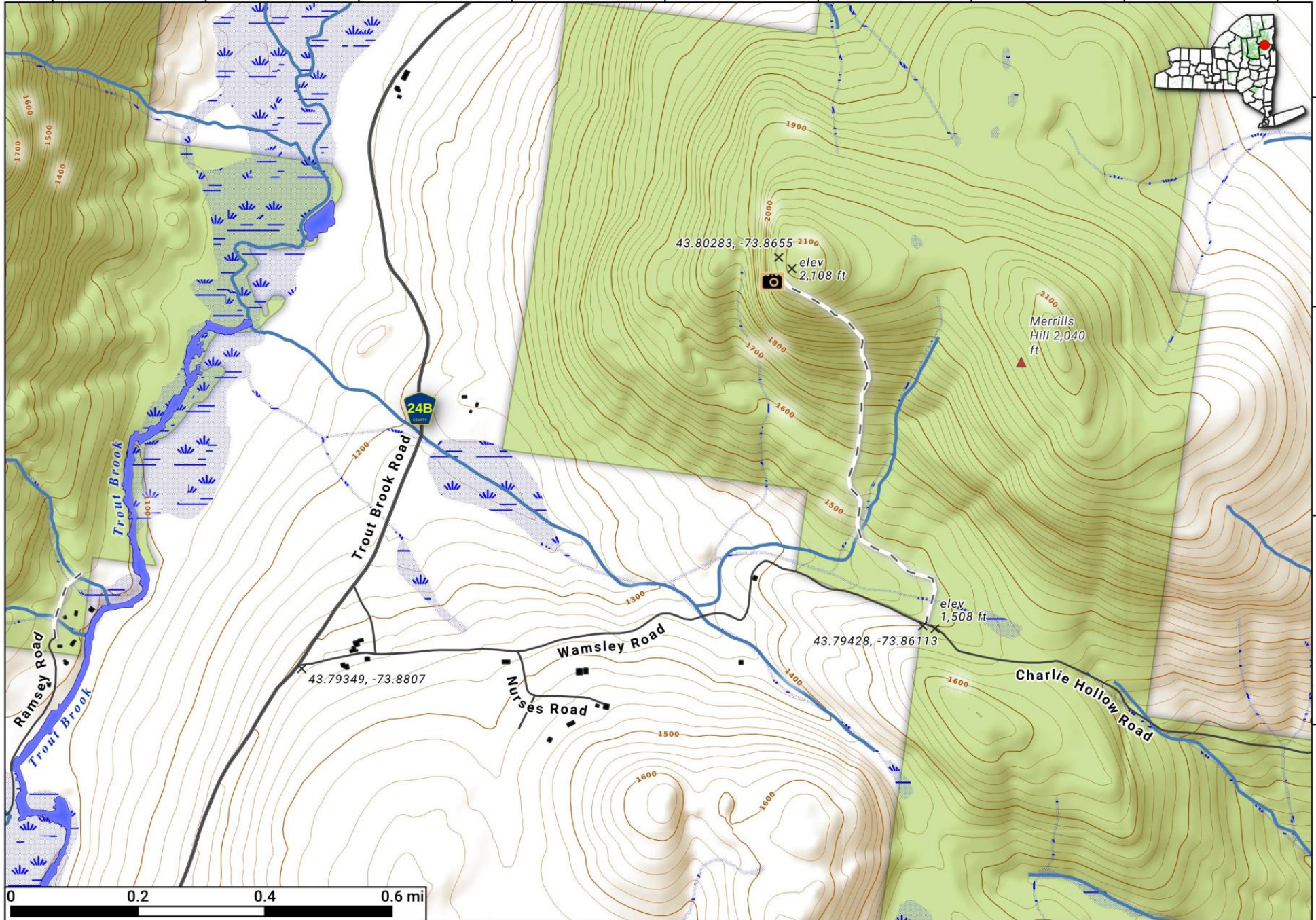
Merill's Hill Trail. 8/10th of a mile trail to a ledge looking west off of Trout Brook and Charlie Hollow Road outside of Scroon Lake.

Photos and more info here: <http://tinyurl.com/merrills-hill>

Map created by Andy Arthur on 12/28/2023 in QGIS 3.34.1-Prizren. Contains DEC Trails/Assets, Additional Campsites/Trails by Andy other data ©OpenStreetMap Data, OSM Maintainers. More maps at andyarthur.org.



-73.89 -73.88 -73.88 -73.87 -73.87 -73.86 -73.86 -73.85 -73.85



43.81
43.80
43.80
43.79

0 0.2 0.4 0.6 mi