

# Clapper Hollow State Forest.

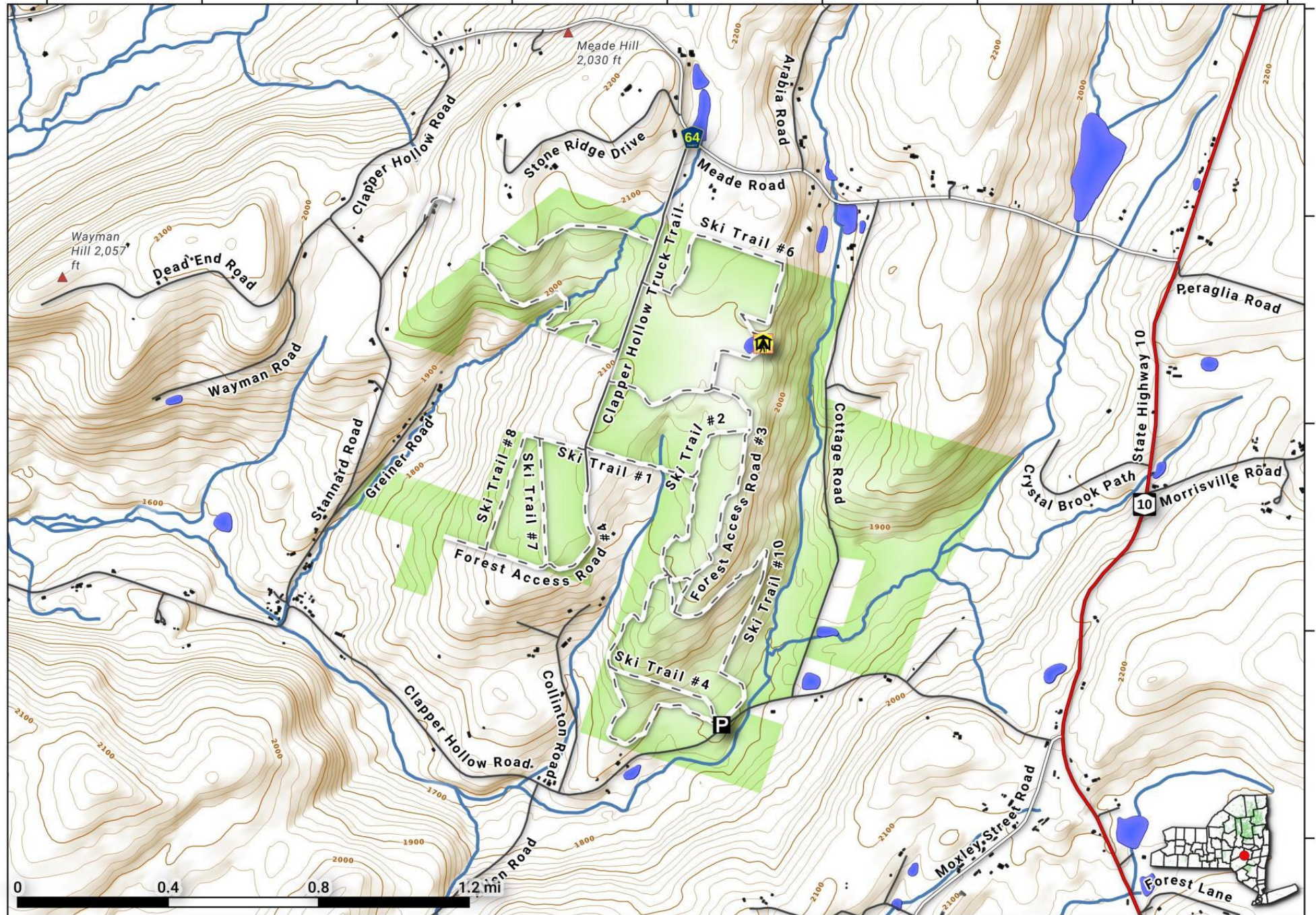
State Forest located in south-western Schoharie County outside of Summit with a lean-to/campsite on a small pond.

Map is projected in Web Mercator 3857 and is 1:21,000 scale, True North. 20 foot contours. Yellow areas are non-state owned park/preserve, special rules may apply.

Created by Andy Arthur on 10/2/2022 in QGIS 3.26. Contains DEC Trails/Assets, Additional Campsites/Trails by Andy other data ©OpenStreetMap Data, OSM Maintainers. More maps at [andyarthur.org](http://andyarthur.org).



-74.68      -74.67      -74.66      -74.66      -74.65      -74.64      -74.63      -74.62      -74.61



0      0.4      0.8      1.2 mi

42.54  
42.53  
42.52  
42.51