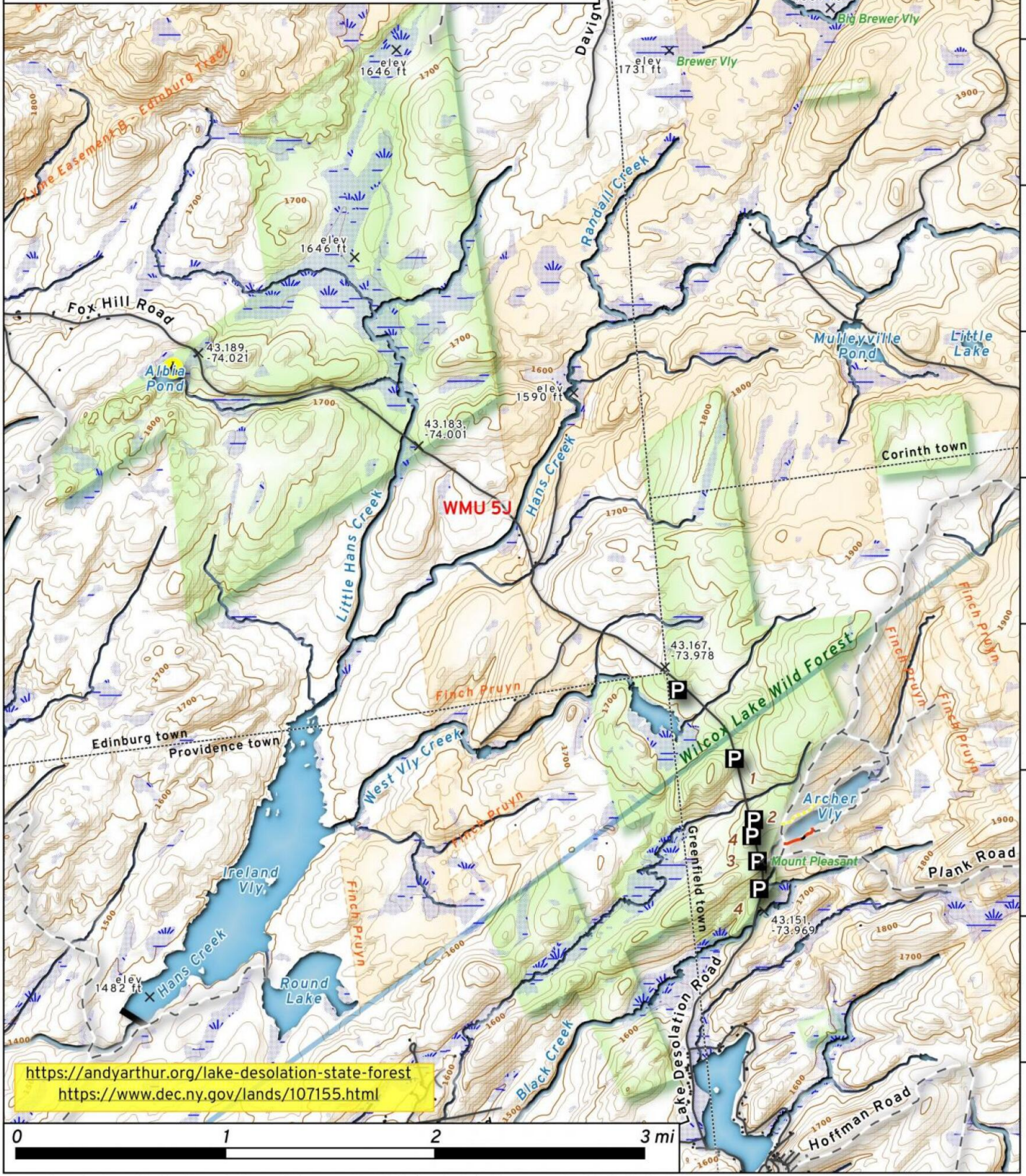


-74.03 -74.02 -74.01 -74.00 -73.99 -73.98 -73.97 -73.96 -73.95

Lake Desolation State Forest

Several parcels located between Lake Desolation and Bachelorsville Bridge on Lake Desolation & Fox Hill Road, which is also followed by the Long Path. Notable is Albia Pond and Acher Vly. (WMU 5J)

Wild Forest
Orange lands are various easements which have special use/access restrictions.



<https://andyarthur.org/lake-desolation-state-forest>
<https://www.dec.ny.gov/lands/107155.html>

Lake Desolation State Forest Map, February 7, 2021 by AndyArthur.org in QGIS 3.16.3-Hannover and Python. Street Map is Copyright © OpenStreetMap contributors, CC BY-SA. NYSDEC Data: LiDAR/DEM, Borders, ADK Wetlands, Trails, Assets. True North. 1 inch = 0.6 miles. Projection: NAD83 / UTM zone 18N. Coordinates: 0.01° latitude-longitude (WGS84). Contours are 20 feet. Map is centered on 43.1749,-74.004.