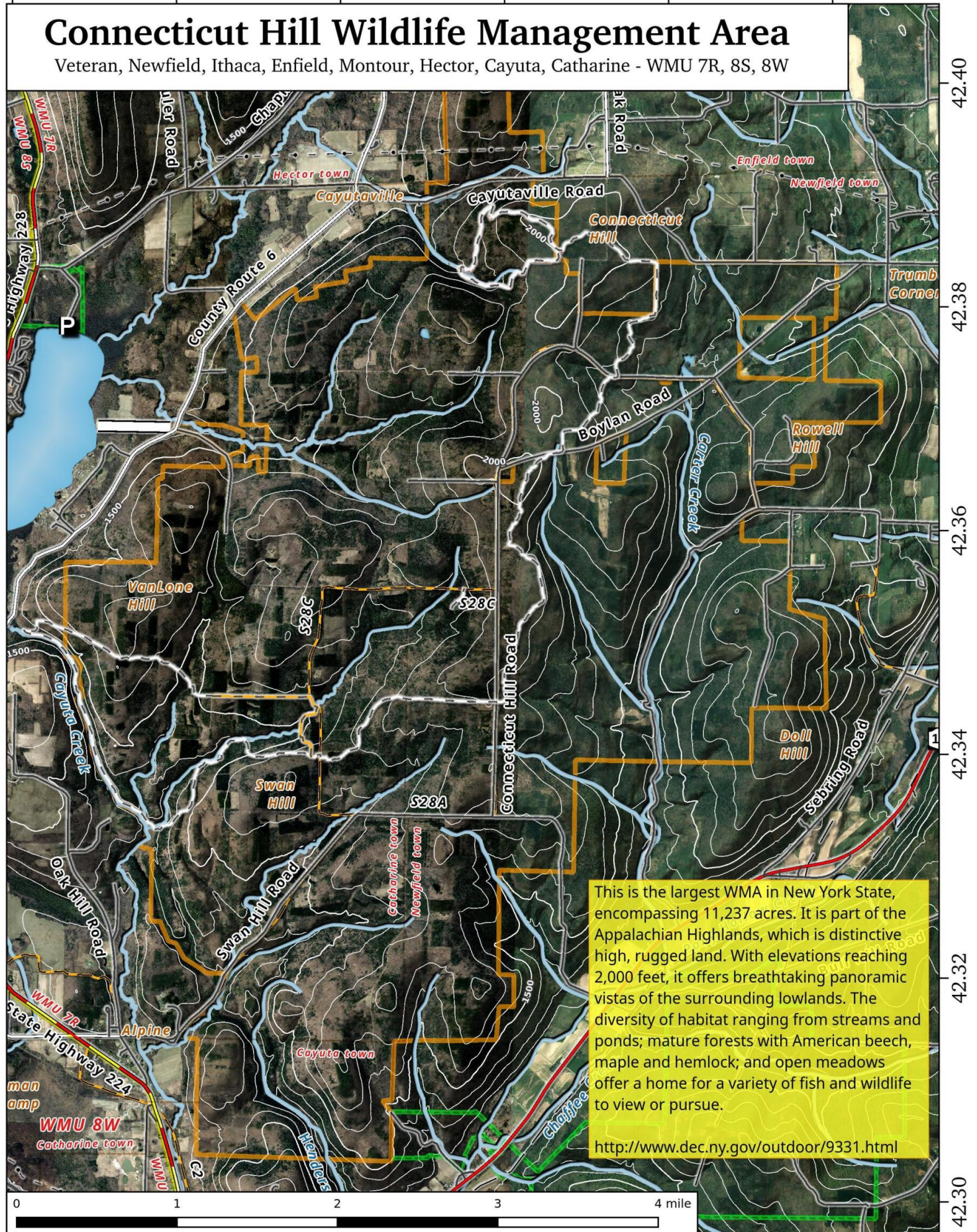


-76.74 -76.72 -76.70 -76.68 -76.66 -76.64

Connecticut Hill Wildlife Management Area

Veteran, Newfield, Ithaca, Enfield, Montour, Hector, Cayuta, Catharine - WMU 7R, 8S, 8W



This is the largest WMA in New York State, encompassing 11,237 acres. It is part of the Appalachian Highlands, which is distinctive high, rugged land. With elevations reaching 2,000 feet, it offers breathtaking panoramic vistas of the surrounding lowlands. The diversity of habitat ranging from streams and ponds; mature forests with American beech, maple and hemlock; and open meadows offer a home for a variety of fish and wildlife to view or pursue.

<http://www.dec.ny.gov/outdoor/9331.html>

Connecticut Hill Wildlife Management Area Map, April 4, 2018 by AndyArthur.org in QGIS 2.18.11 and Python. Street Map is Copyright © OpenStreetMap contributors, CC BY-SA. NYSDEC Data: LiDAR/DEM, Borders, ADK Wetlands, Trails, Assets. True North. 1 inch = 0.8 miles. Projection: NAD83 / UTM zone 18N. Coordinates: 0.02° latitude-longitude (WGS84). Contours are 0 feet.