

# Tracy Creek State Forest (Stueben 16)

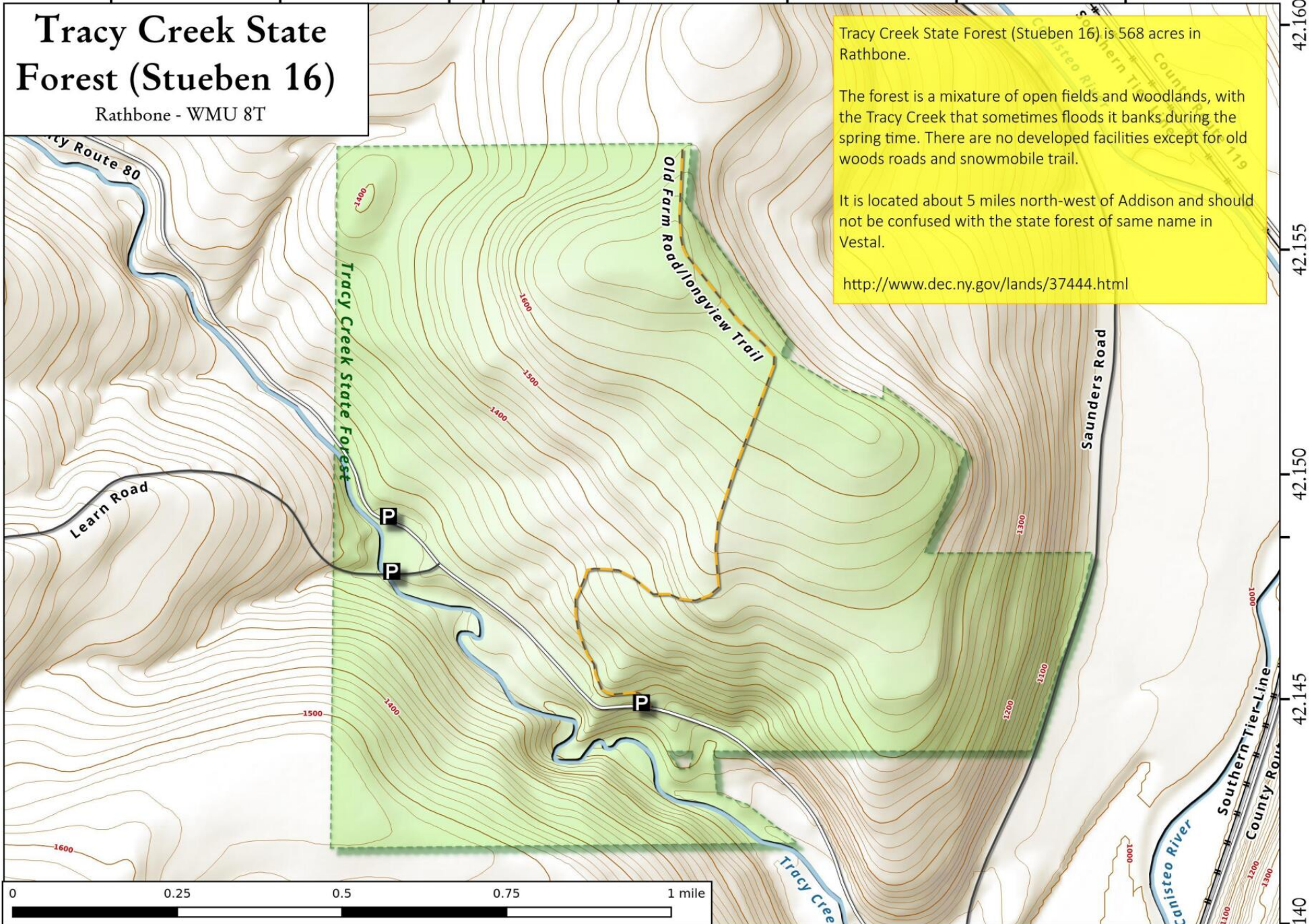
Rathbone - WMU 8T

Tracy Creek State Forest (Stueben 16) is 568 acres in Rathbone.

The forest is a mixture of open fields and woodlands, with the Tracy Creek that sometimes floods it banks during the spring time. There are no developed facilities except for old woods roads and snowmobile trail.

It is located about 5 miles north-west of Addison and should not be confused with the state forest of same name in Vestal.

<http://www.dec.ny.gov/lands/37444.html>



Tracy Creek State Forest (Stueben 16) Map, December 8, 2017 by AndyArthur.org in QGIS 2.18.11 and Python. Street Map is Copyright © OpenStreetMap contributors, CC BY-SA. NYSDEC Data: DEM, Borders, ADK Wetlands, Trails, Assets. True North. 1 inch = 0.2 miles. Projection: NAD83 / UTM zone 18N. Coordinates: 0.005° latitude-longitude (WGS84). Contours are 20 feet.