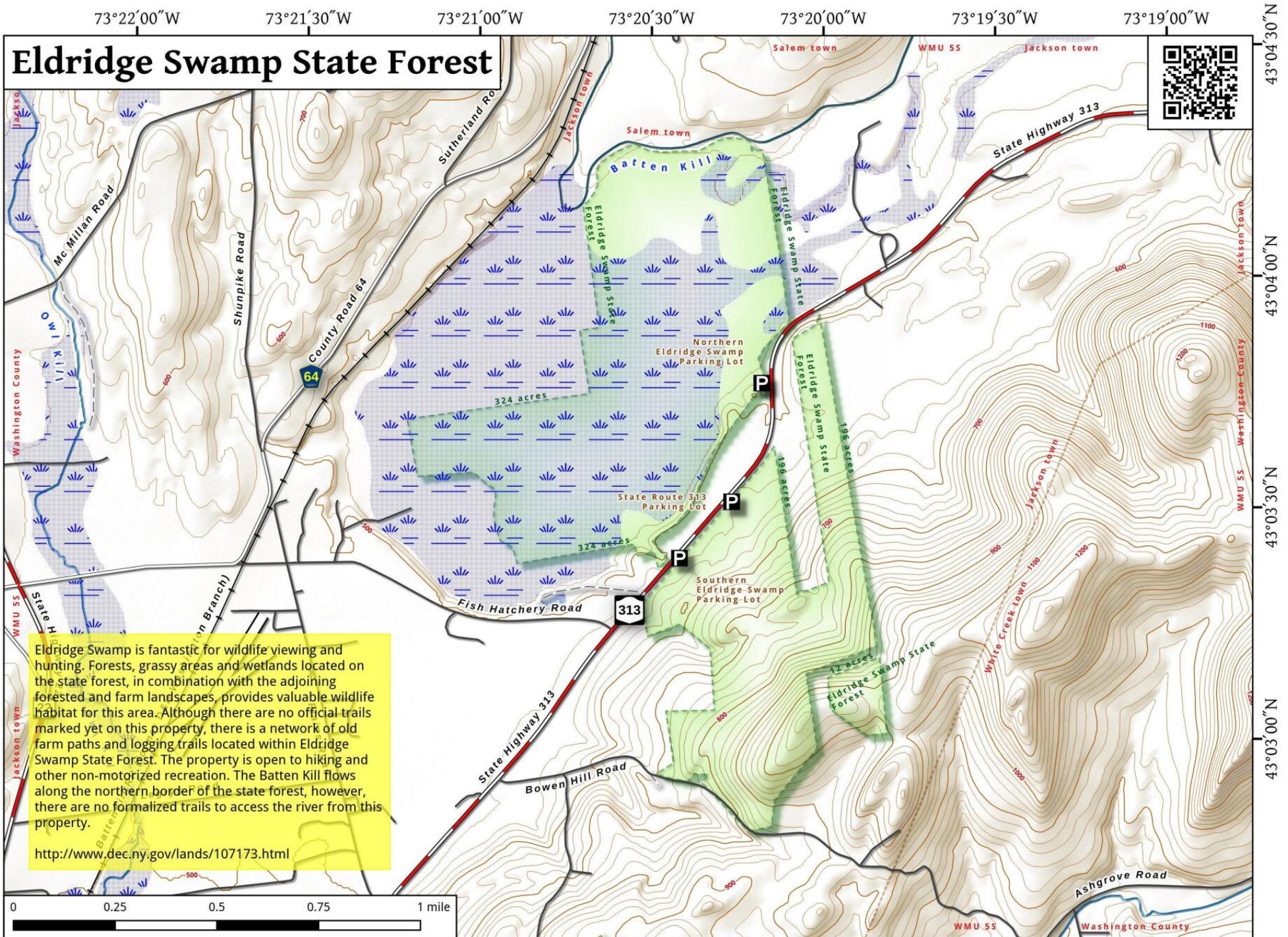
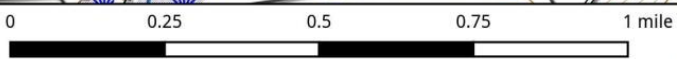


Eldridge Swamp State Forest



Eldridge Swamp is fantastic for wildlife viewing and hunting. Forests, grassy areas and wetlands located on the state forest, in combination with the adjoining forested and farm landscapes, provides valuable wildlife habitat for this area. Although there are no official trails marked yet on this property, there is a network of old farm paths and logging trails located within Eldridge Swamp State Forest. The property is open to hiking and other non-motorized recreation. The Batten Kill flows along the northern border of the state forest, however, there are no formalized trails to access the river from this property.

<http://www.dec.ny.gov/lands/107173.html>



Eldridge Swamp State Forest Map, September 28, 2016 by AndyArthur.org in QGIS 2.16.1-Nødebo and Python. Street Map is Copyright © OpenStreetMap contributors, CC BY-SA. NYSDEC Data: DEM, Borders, ADK Wetlands, Trails, Assets. True North. 1 inch = 0.3 miles. Projection: NAD83 / UTM zone 18N. Coordinates: 30" WGS 84. Contours are 20 feet.