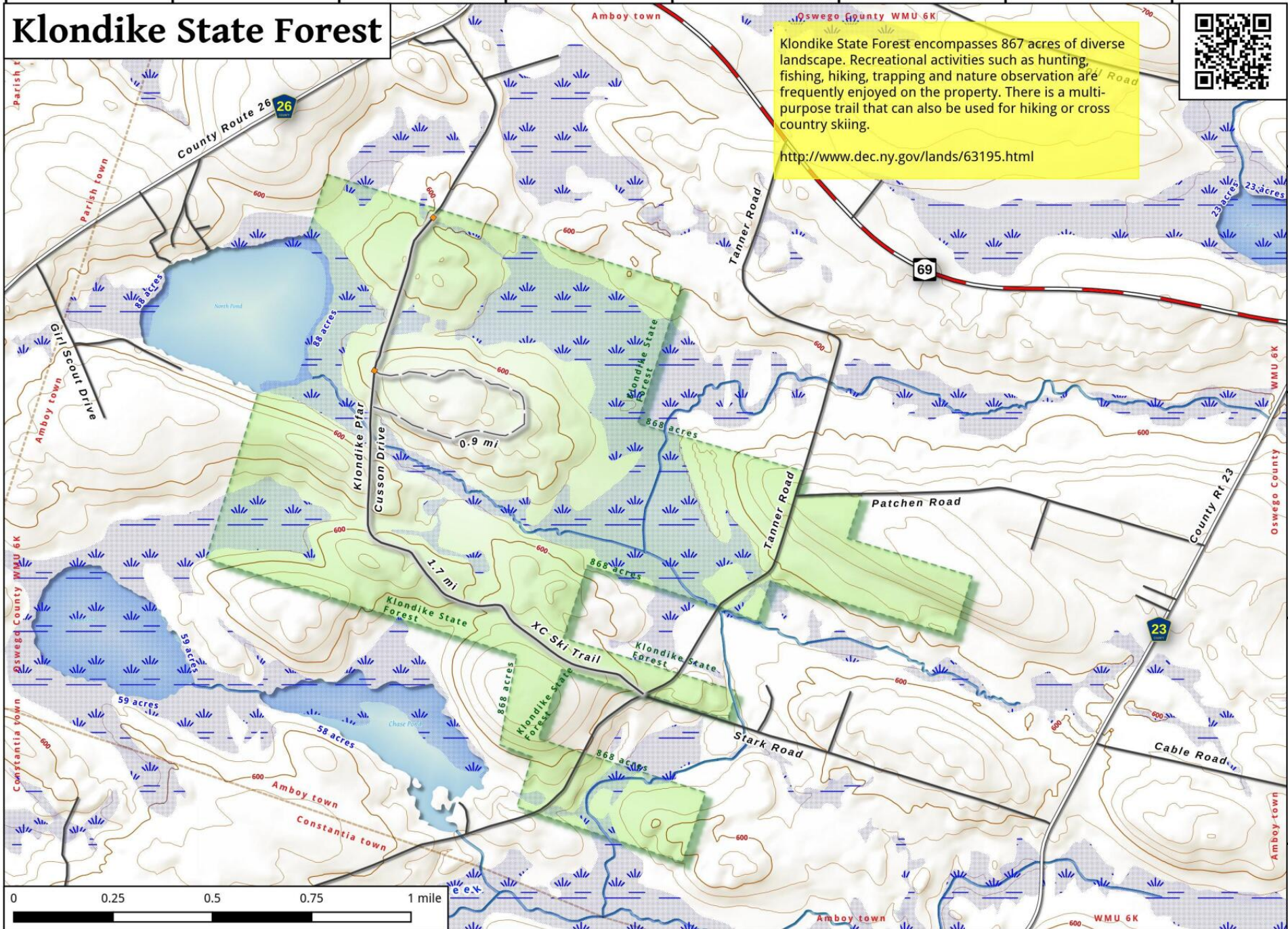


76°00'30"W 76°00'00"W 75°59'30"W 75°59'00"W 75°58'30"W 75°58'00"W 75°57'30"W 75°57'00"W

Klondike State Forest



Klondike State Forest encompasses 867 acres of diverse landscape. Recreational activities such as hunting, fishing, hiking, trapping and nature observation are frequently enjoyed on the property. There is a multi-purpose trail that can also be used for hiking or cross country skiing.
<http://www.dec.ny.gov/lands/63195.html>



43°22'30"N
43°22'00"N
43°21'30"N
43°21'00"N

Klondike State Forest Map, September 15, 2016 by AndyArthur.org in QGIS 2.16.1-Nødebo and Python. Street Map is Copyright © OpenStreetMap contributors, CC BY-SA. NYSDEC Data: DEM, Borders, ADK Wetlands, Trails, Assets. True North. 1 inch = 0.3 miles. Projection: NAD83 / UTM zone 18N. Coordinates: 30" WGS 84. Contours are 20 feet.