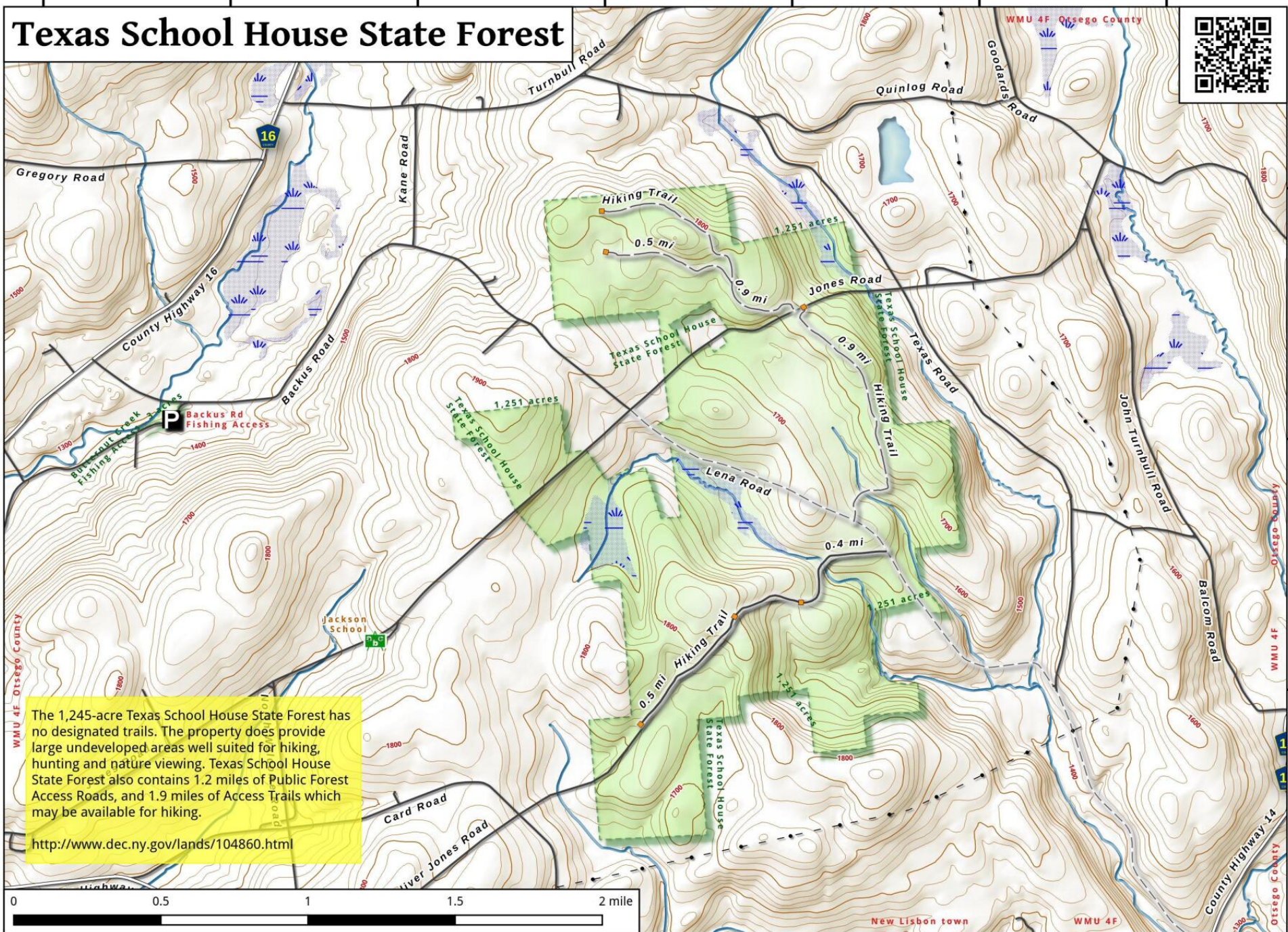


75°09'45"W 75°09'00"W 75°08'15"W 75°07'30"W 75°06'45"W 75°06'00"W 75°05'15"W

Texas School House State Forest



42°39'45"N
42°39'00"N
42°38'15"N

The 1,245-acre Texas School House State Forest has no designated trails. The property does provide large undeveloped areas well suited for hiking, hunting and nature viewing. Texas School House State Forest also contains 1.2 miles of Public Forest Access Roads, and 1.9 miles of Access Trails which may be available for hiking.

<http://www.dec.ny.gov/lands/104860.html>

Texas School House State Forest Map, September 8, 2016 by AndyArthur.org in QGIS 2.16.1-Nødebo and Python. Street Map is Copyright © OpenStreetMap contributors, CC BY-SA. NYSDEC Data: DEM, Borders, ADK Wetlands, Trails, Assets. True North. 1 inch = 0.4 miles. Projection: NAD83 / UTM zone 18N. Coordinates: 45" WGS 84. Contours are 20 feet.