

74°45'00"W

74°44'30"W

74°44'00"W

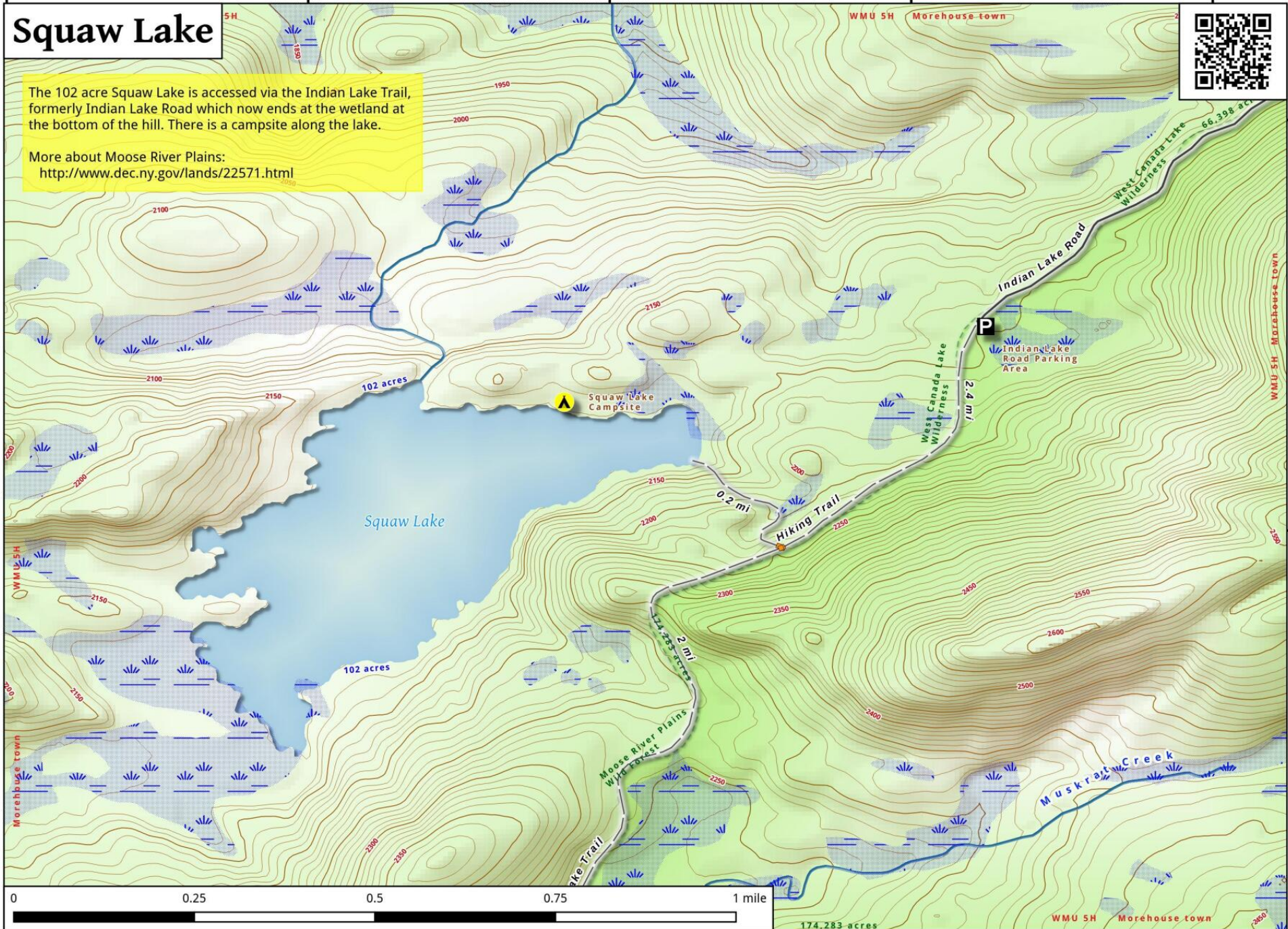
74°43'30"W

74°43'00"W

Squaw Lake

The 102 acre Squaw Lake is accessed via the Indian Lake Trail, formerly Indian Lake Road which now ends at the wetland at the bottom of the hill. There is a campsite along the lake.

More about Moose River Plains:
<http://www.dec.ny.gov/lands/22571.html>



43°38'30"N

43°38'00"N

Squaw Lake Map, May 25, 2016 by AndyArthur.org in QGIS 2.14.2-Essen and Python. Street Map is Copyright © OpenStreetMap contributors, CC BY-SA. NYSDEC Data: DEM, Borders, ADK Wetlands, Trails, Assets. True North. 1 inch = 0.2 miles. Projection: NAD83 / UTM zone 18N. Coordinates: 30" WGS 84. Contours are 10 feet.