

76°23'00"W

76°22'00"W

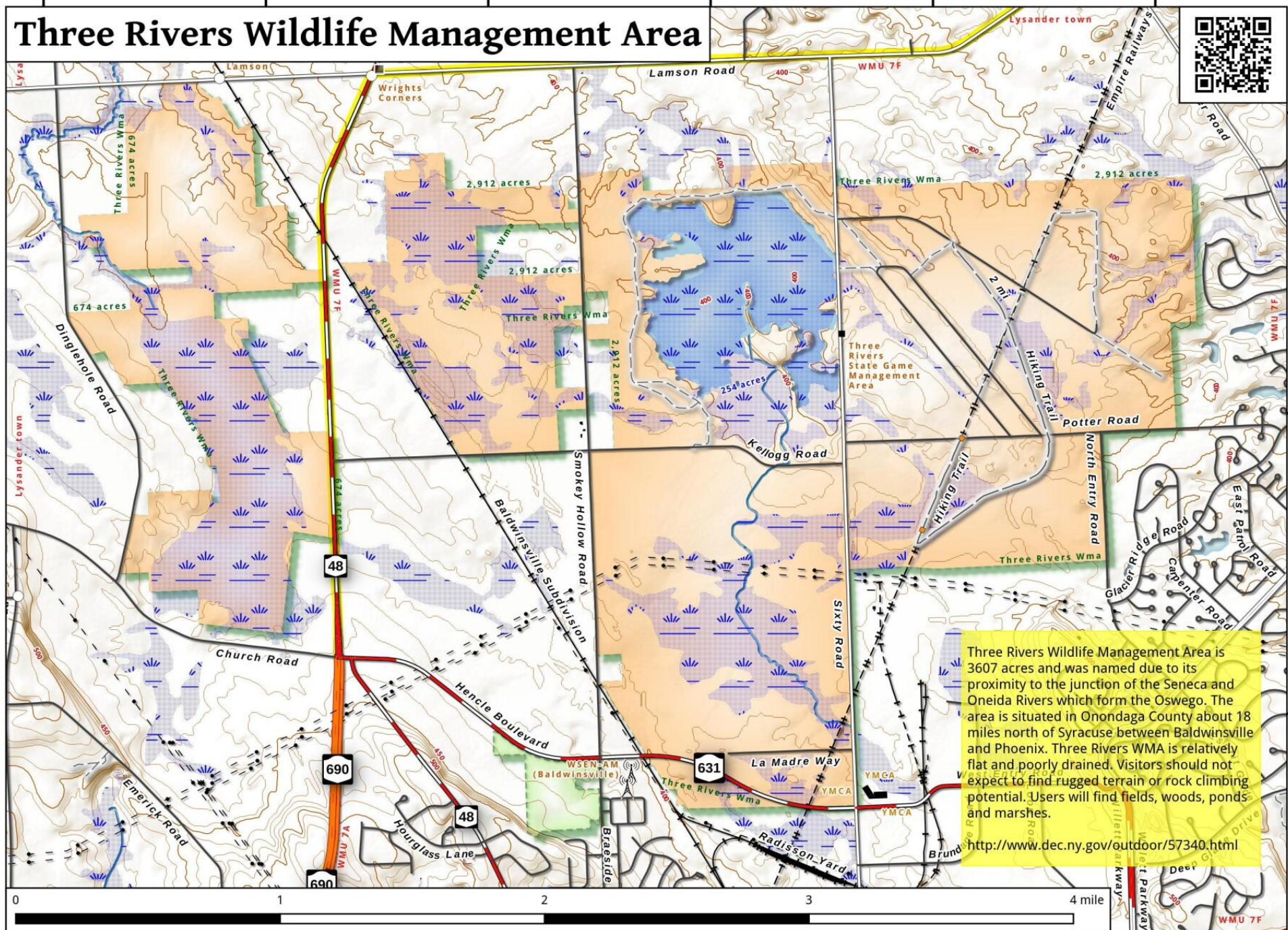
76°21'00"W

76°20'00"W

76°19'00"W

76°18'00"W

Three Rivers Wildlife Management Area



Three Rivers Wildlife Management Area is 3607 acres and was named due to its proximity to the junction of the Seneca and Oneida Rivers which form the Oswego. The area is situated in Onondaga County about 18 miles north of Syracuse between Baldwinsville and Phoenix. Three Rivers WMA is relatively flat and poorly drained. Visitors should not expect to find rugged terrain or rock climbing potential. Users will find fields, woods, ponds and marshes.

<http://www.dec.ny.gov/outdoor/57340.html>

Three Rivers Wildlife Management Area Map, May 25, 2016 by AndyArthur.org in QGIS 2.14.2-Essen and Python. Street Map is Copyright © OpenStreetMap contributors, CC BY-SA. NYSDEC Data: DEM, Borders, ADK Wetlands, Trails, Assets. True North. 1 inch = 0.6 miles. Projection: NAD83 / UTM zone 18N. Coordinates: 60" WGS 84. Contours are 10 feet.